

NEW MEXICO OIL CONSERVATION DIVISION  
SOUTHEAST NEW MEXICO PACKER LEAKAGE TEST

Operator ARMSTRONG ENERGY Well API # 30-005-60925  
Location Of Well: Unit M Section 34 Township 8S Range 37E County CHAVES  
Well Name & No. CAMPBELL STA. UNIT 1

	Name of Reservoir or Pool	Type of Prod. (Oil or Gas)	Method of Prod. (Flow Art. Lift)	Prod. Medium (Tbg. Or Cag.)	Choke Size
Upper Completion	<u>ABO</u>	<u>GAS</u>	<u>Flow</u>	<u>CSG.</u>	<u>OPEN</u>
Lower Completion	<u>PENN.</u>	<u>GAS</u>	<u>Flow</u>	<u>TBG.</u>	<u>OPEN</u>

**FLOW TEST NO. 1**

Both zones shut-in at (hour, date): 7:30 12-5-11

Well opened at (hour, date): 11:15 12-5-11

	Upper Completion	Lower Completion
Indicate by (X) the zone producing.....		<u>X</u>
Pressure at beginning of test.....	<u>100</u>	<u>200</u>
Stabilized? (Yes or No).....	<u>YES</u>	<u>YES</u>
Maximum pressure during test.....	<u>165</u>	<u>300</u>
Minimum pressure during test.....	<u>100</u>	<u>200</u>
Pressure at conclusion of test.....	<u>165</u>	<u>250</u>
Pressure change during test (Maximum minus Minimum).....	<u>65</u>	<u>100</u>
Was pressure change an increase or a decrease?.....	<u>INCREASE</u>	<u>INCREASE</u>

Well closed at (hour, date): 10:15 12-6-11 Total Time On Production 23 HRS.

Oil Production During Test: 0 bbls; Grav. \_\_\_\_\_; Gas Production During Test: 22 MCF; GOR N/A

Remarks: TBG. VALVE FREEZING OFF, ICE IN VALVE

**FLOW TEST NO. 2**

Both zones shut-in at (hour, date): 10:15 12-6-11

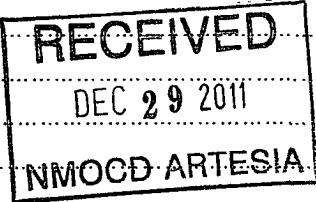
Well opened at (hour, date): 10:30 12-6-11

	Upper Completion	Lower Completion
Indicate by (X) the zone producing.....	<u>X</u>	
Pressure at beginning of test.....	<u>165</u>	<u>255</u>
Stabilized? (Yes or No).....	<u>YES</u>	<u>YES</u>
Maximum pressure during test.....	<u>165</u>	<u>360</u>
Minimum pressure during test.....	<u>105</u>	<u>255</u>
Pressure at conclusion of test.....	<u>105</u>	<u>275</u>
Pressure change during test (Maximum minus Minimum).....	<u>60</u>	<u>105</u>
Was pressure change an increase or a decrease?.....	<u>DECREASE</u>	<u>INCREASE</u>

Well closed at (hour, date): 10:15 12-7-11 Total Time On Production 23 HRS 45 MIN.

Oil Production During Test: 0 bbls; Grav. \_\_\_\_\_; Gas Production During Test: 28 MCF; GOR N/A

Remarks: \_\_\_\_\_



I hereby certify that the information herein contained is true and complete to the best of my knowledge.

Approved \_\_\_\_\_ 20\_\_\_\_\_  
New Mexico Oil Conservation Division

Operator ARMSTRONG ENERGY

By JEFF DECK

By RICHARD INNES

Title MEASUREMENT TECH. II

Title COMPLIANCE OFFICER

E-mail Address jdeck@gwestoffice.NET

1/9/12

Date 12-7-11



# API Well Number Banner

## Report Description

This report shows a Well's API Number in Barcode format for purposes of scanning. The Barcode format is Code 39.



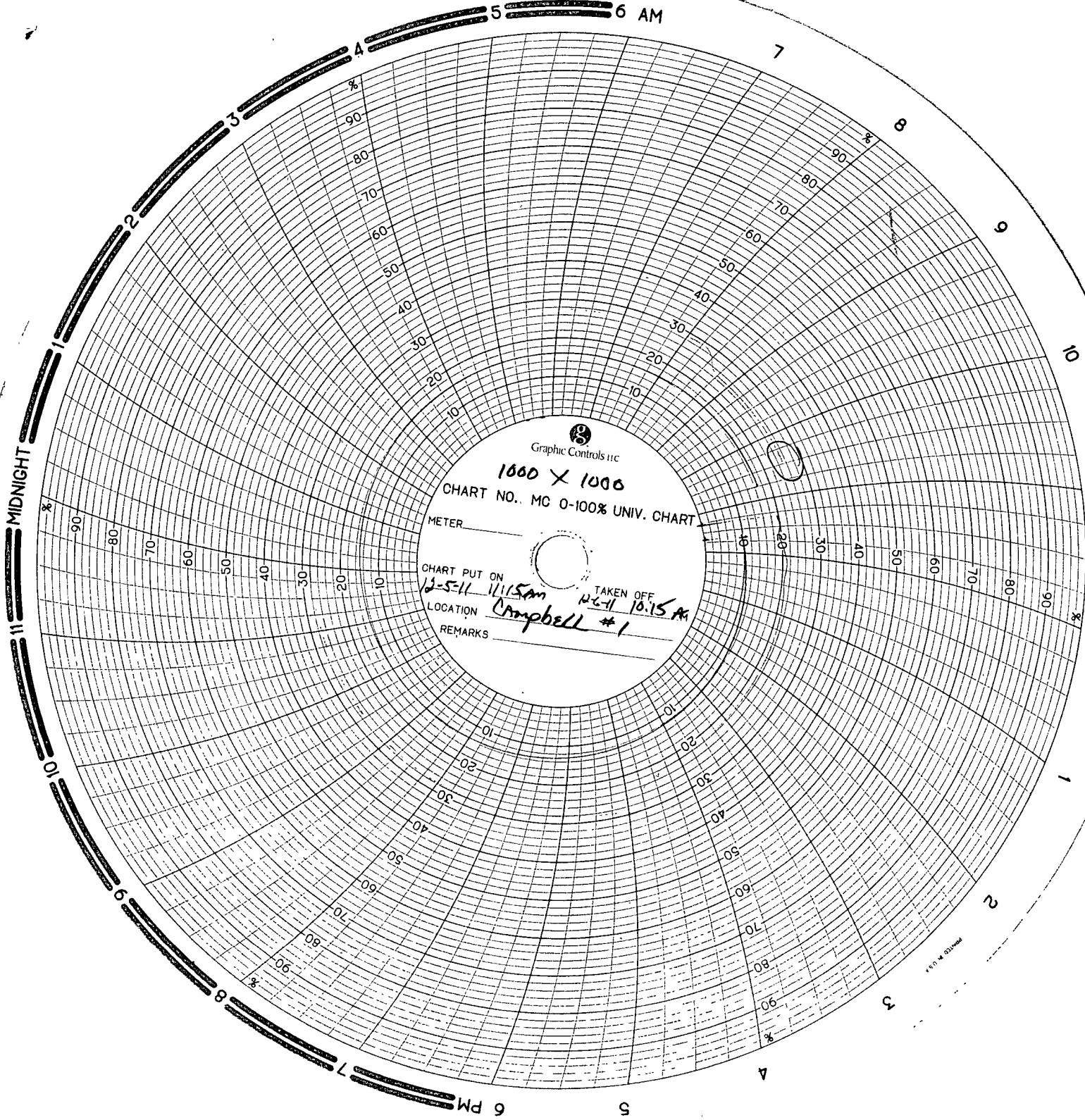
**30005609250000**

30 5 60925

CAMPBELL STATION UNIT No.001

ARMSTRONG ENERGY CORP

1/18/2012



Graphic Controls Inc

1000 X 1000

CHART NO. MC 0-100% UNIV. CHART

METER \_\_\_\_\_

CHART PUT ON

12-5-11 11:15 AM

TAKEN OFF

12-11 10:15 AM

LOCATION

Campbell #1

REMARKS \_\_\_\_\_

MADE IN U.S.A.