

20-015-33873

Yates Energy Corporation
Lonesome Dove No, 2

Log Tops

Capitan (lime)	928
Brushy Canyon	1140
Bone Spring lime	1667
Bone Spring sand/shal	2332
Wolfcamp	7200
Cisco Canyon	8324
Strawn	8888
Atoka	9127
Morrow	9636
Mississippian	10269

8431' - 8436' (Cisco Canyon)

8910' - 8944' (Strawn Sand)

CIBP set at 9900', 35' cement on top 9865'.
9950' - 9982; (Morrow Sand) (8/17/2011)

10,020' K.B. CIBP set at 10,030' with 10' cement on top.
10,048' - 10,084' (Morrow) (8/5/2011)

Procedure to plug and abandon

Casing

13.375", 48#/ft., H-40, set at 340.00' KB, cement circulated.

8.625", 32#/ft., J-55 casing set at 2638" KB., cement circulated.

4.50", 11.60#/FT, N-80, LT&C casing set at 10,391' KB
Cemented with total of 1770 sacks cement. DV tool at 6900' K.B.
Cement did not circulate. Top of cement @ 850' by CBL log.

Plugs that need to be set

Perforate and squeeze	60' - surface	66 sacks
13-3/4" casing set at 340'	290' - 390'	45 sacks
Bonesprings at 2332'	2232' - 2332'	30 sacks
8-5/8" casing set at 2638'	2688' - 2588'	30 sacks
DV tool at 6900' plug 50' above and 50' below)	7200' - 6850'	95 sacks
Wolfcamp formation at 7200'		
Perforations 8431' - 8944'		CIBP at 8425' 35' cement on top

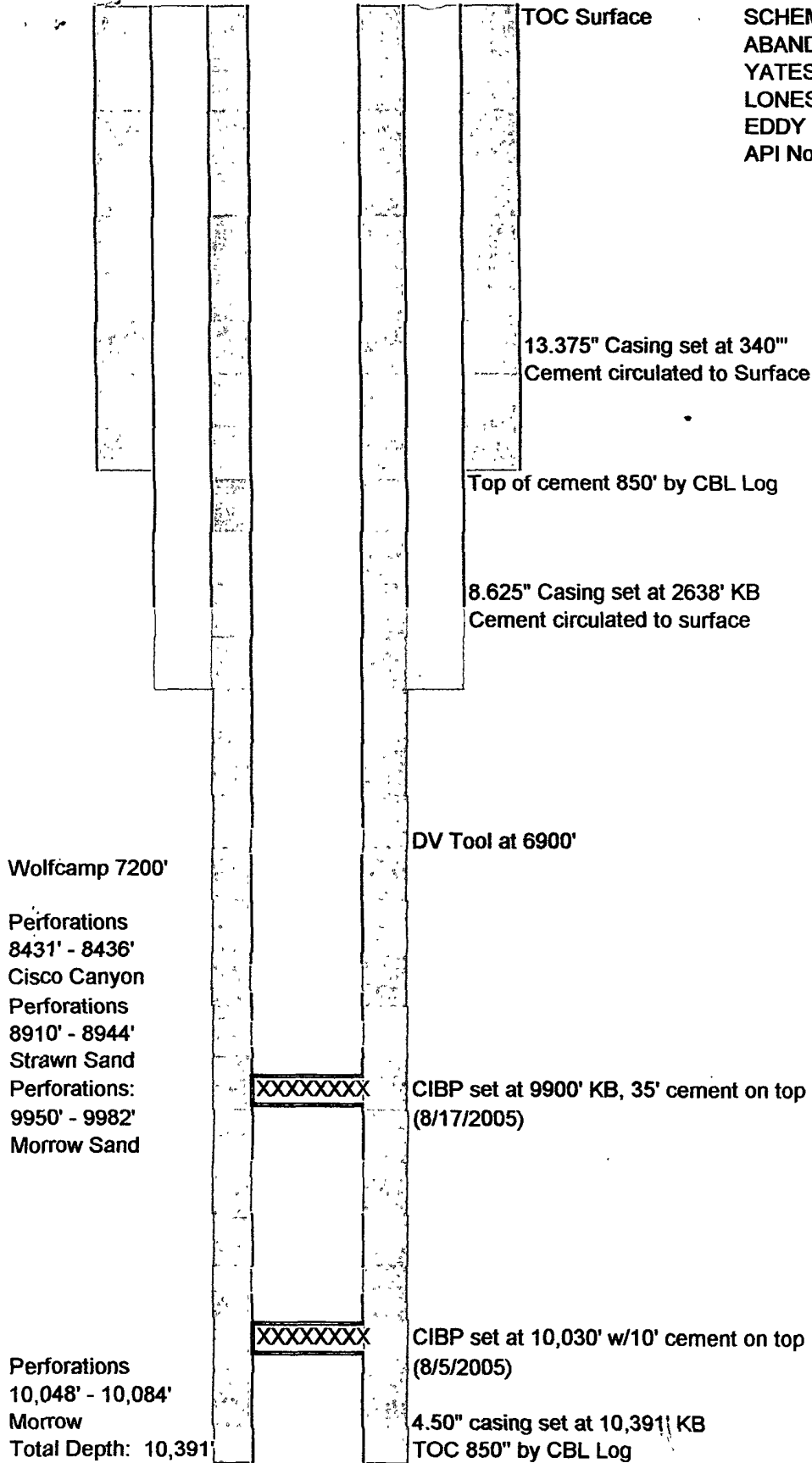
***** Well was drilled in the Anhydrite formation from 86' to 2638' as per daily drilling report

SEE ATTACHED FOR
CONDITIONS OF APPROVAL

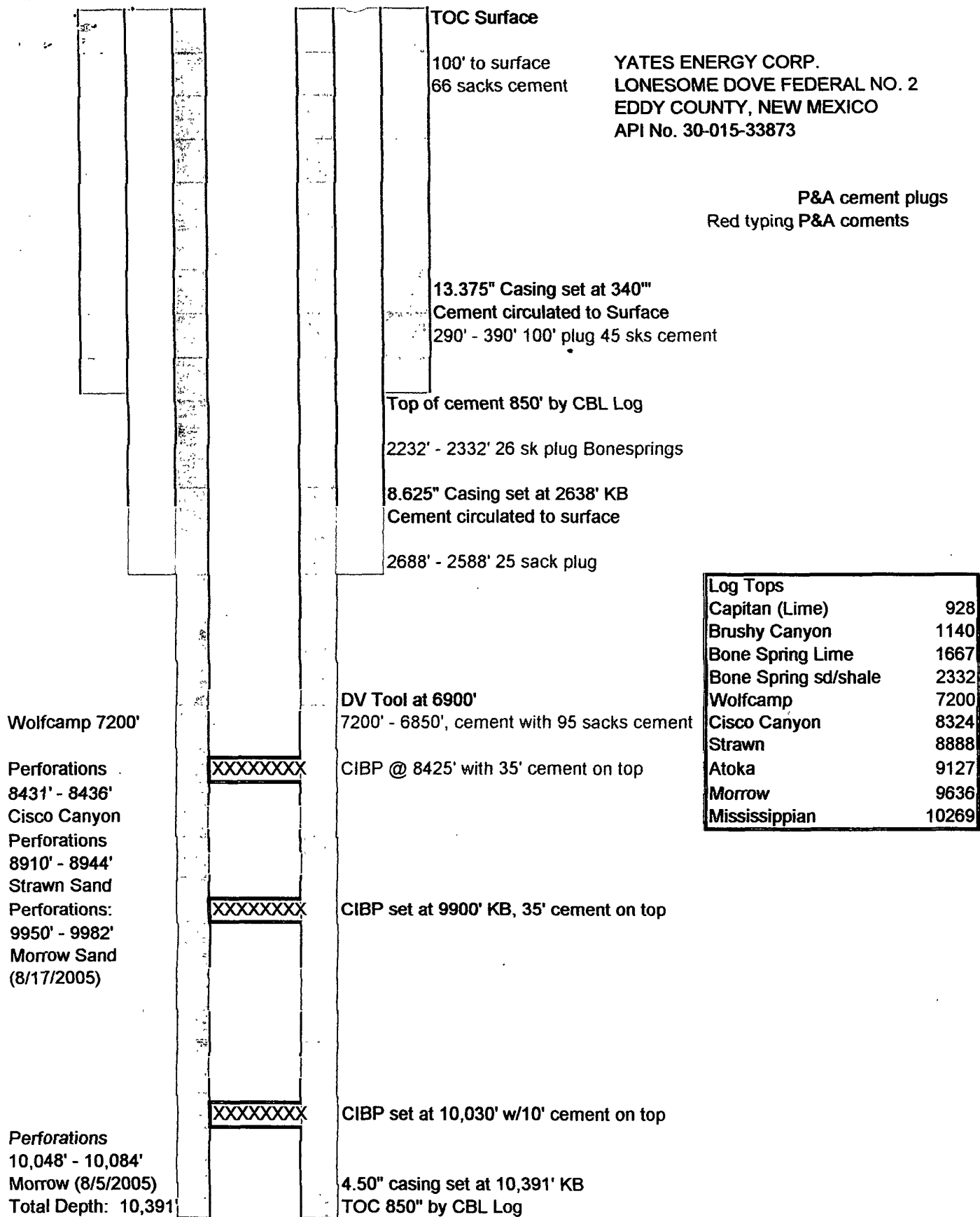
SEE ATTACHED FOR
CONDITIONS OF APPROVAL

SEE ATTACHED FOR
CONDITIONS OF APPROVAL

SCHEMATIC PRIOR TO PLUG AND
ABANDON
YATES ENERGY CORP.
LONESOME DOVE FEDERAL NO. 2
EDDY COUNTY, NEW MEXICO
API No. 30-015-33873



Log Tops	
Capitan (Lime)	928
Brushy Canyon	1140
Bone Spring Lime	1667
Bone Spring sd/shale	2332
Wolfcamp	7200
Cisco Canyon	8324
Strawn	8888
Atoka	9127
Morrow	9636
Mississippian	10269



Log Tops	
Capitan (Lime)	928
Brushy Canyon	1140
Bone Spring Lime	1667
Bone Spring sd/shale	2332
Wolfcamp	7200
Cisco Canyon	8324
Strawn	8888
Atoka	9127
Morrow	9636
Mississippian	10269