

Notes Regarding Blowout Preventer

Mewbourne Oil Company

Aries "20" Federal Com #3H

1770' FSL & 220' FWL (SHL)

Sec 20-T18S-R30E

Eddy County, New Mexico

- I. Drilling nipple (bell nipple) to be constructed so that it can be removed without the use of a welder through the opening of the rotary table, with minimum internal diameter equal to blowout preventer bore.
- II. Blowout preventer and all fittings must be in good condition with a minimum 2000 psi working pressure on 13 $\frac{3}{8}$ " casing and 3000 psi working pressure on 9 $\frac{5}{8}$ " & 7" casing strings.
- III. Safety valve must be available on the rig floor at all times with proper connections to install in the drill string. Valve must be full bore with minimum 3000 psi working pressure.
- IV. Equipment through which bit must pass shall be at least as large as internal diameter of the casing.
- V. A kelly cock shall be installed on the kelly at all times.

Blowout preventer closing equipment to include and accumulator of at least 40 gallon capacity, two independent sources of pressure on closing unit, and meet all other API specifications

Mewbourne Oil Company
 BOP Schematic for
 12 1/4" Hole

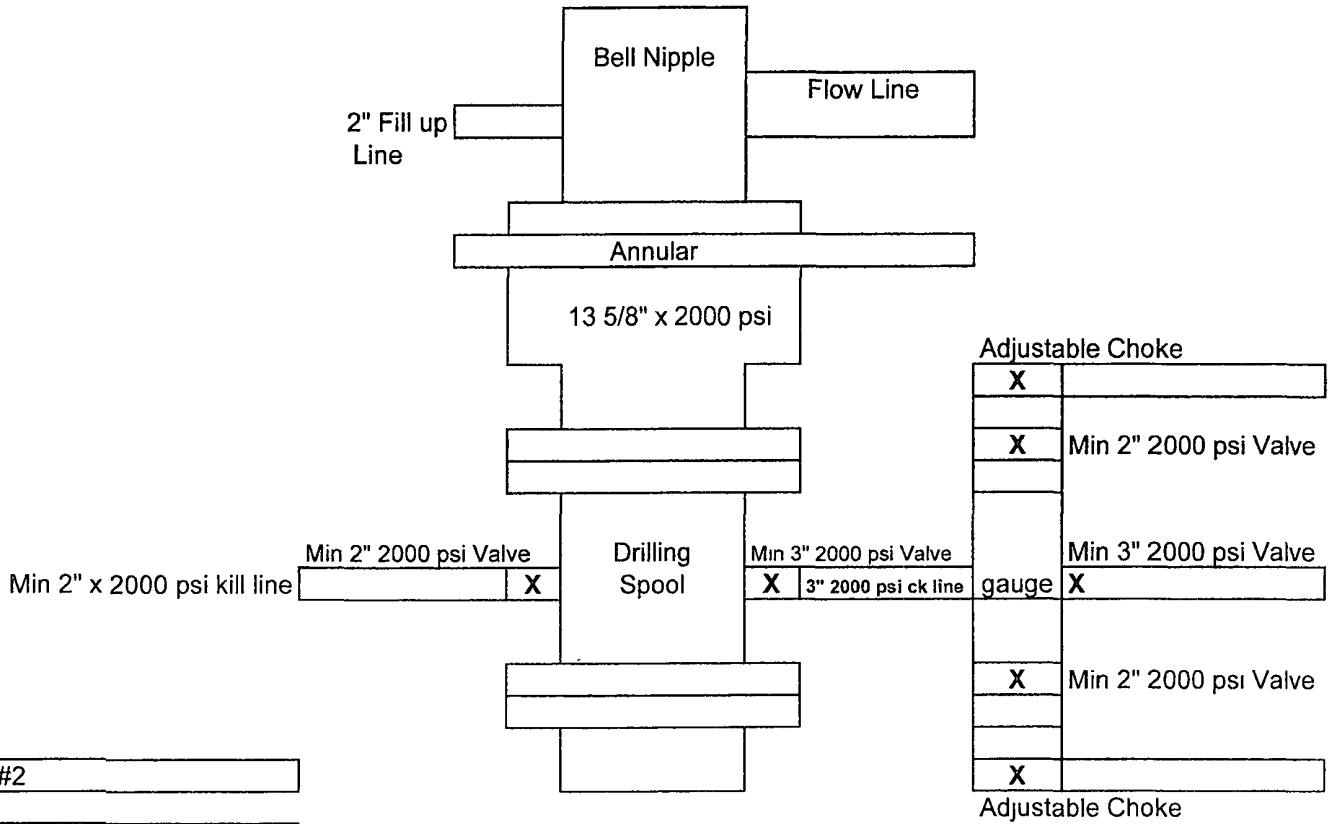


Exhibit #2

Aries "20" Fed Com #3H
 1770' FSL & 220' FWL
 Sec 20-T18S-R30E
 Eddy, County
 New Mexico

Mewbourne Oil Company
 BOP Schematic for
 6 1/8" & 8 3/4" Holes

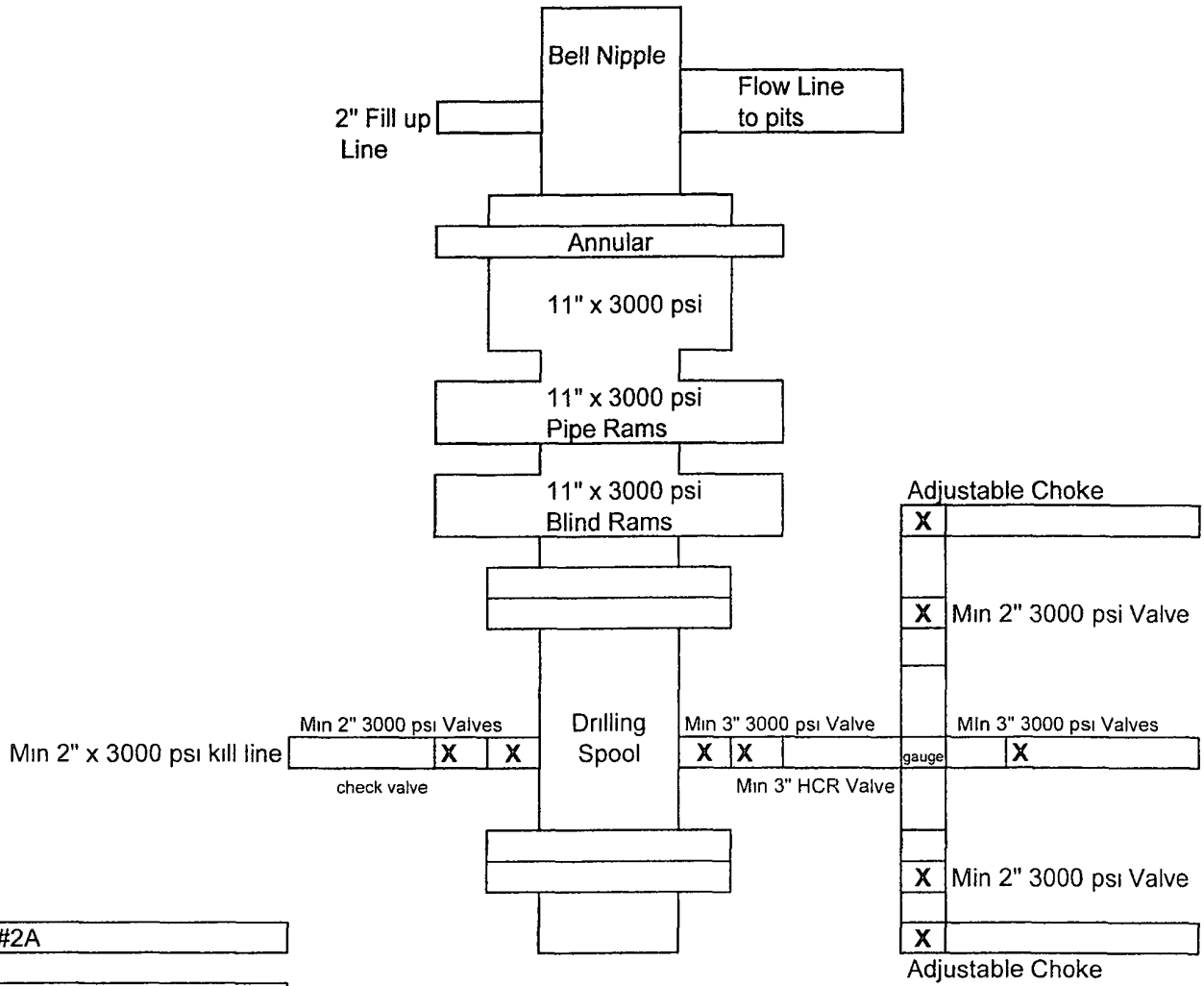
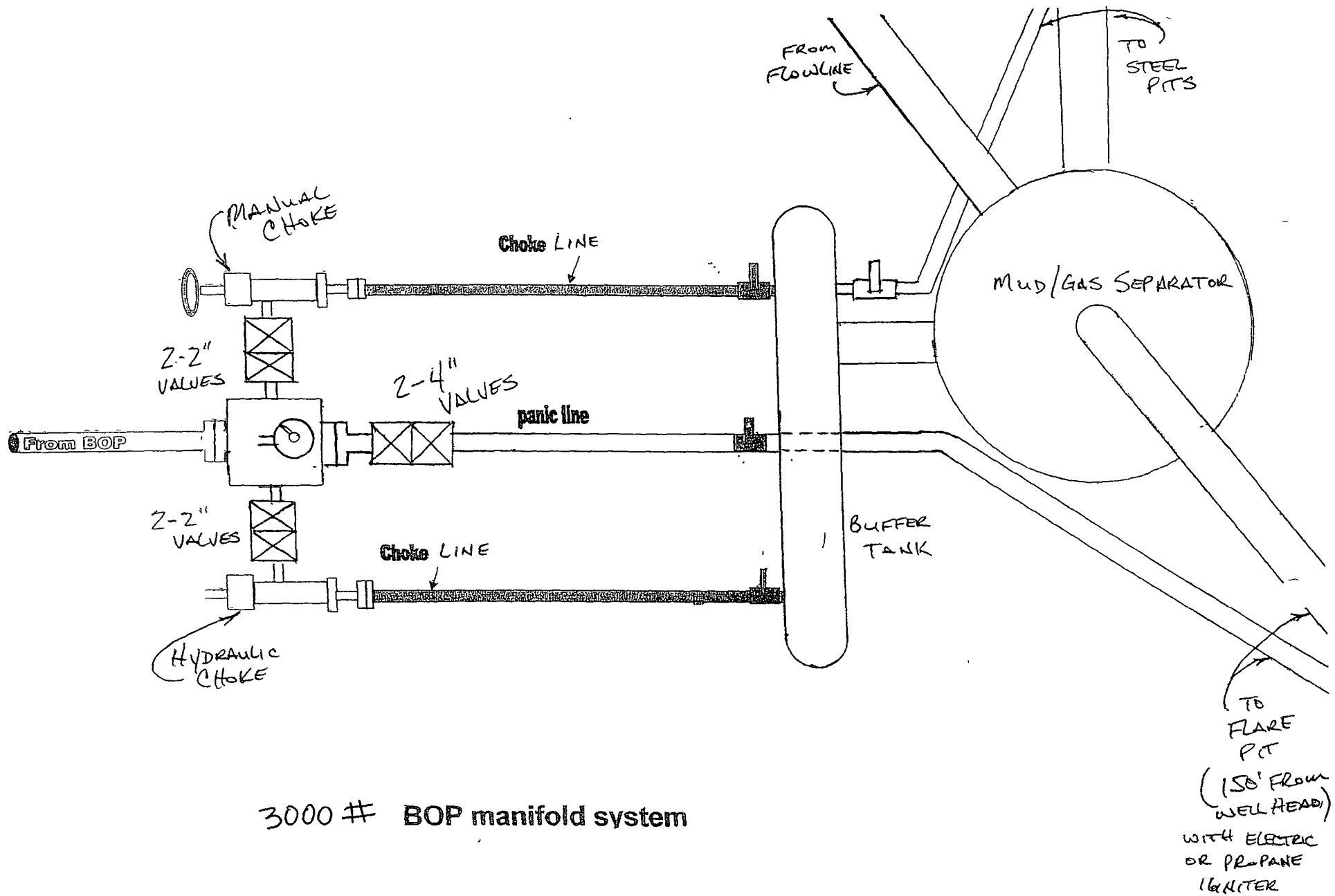
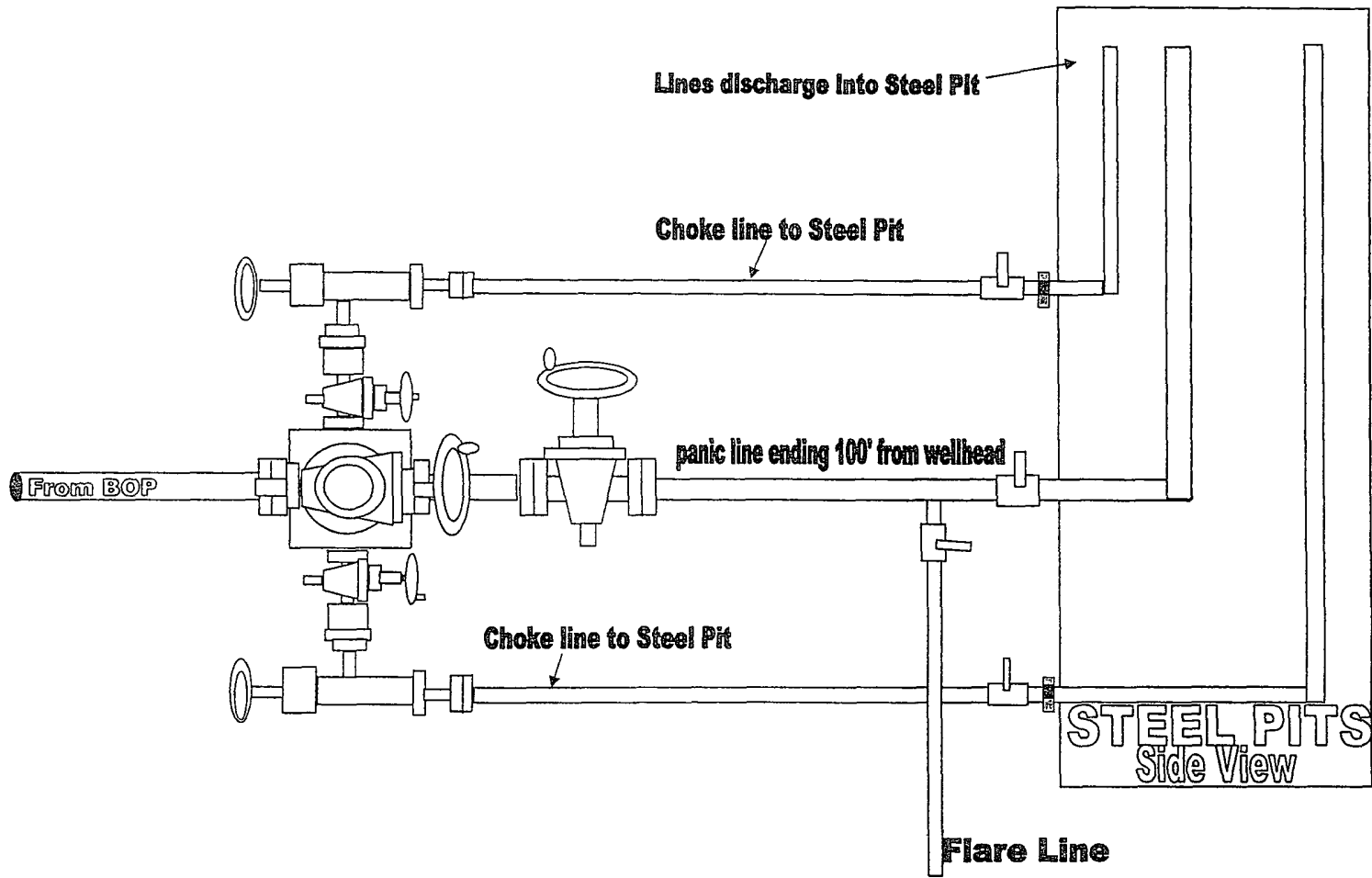


Exhibit #2A

Aries 20 Federal Com #3H
 1770' FSL & 220' FWL
 Sec 20-T18S-R30E
 Eddy, County
 New Mexico





3000# BOP manifold system for Exhibit 2 & 2A

Closed Loop Pad Dimensions 280' x 320'

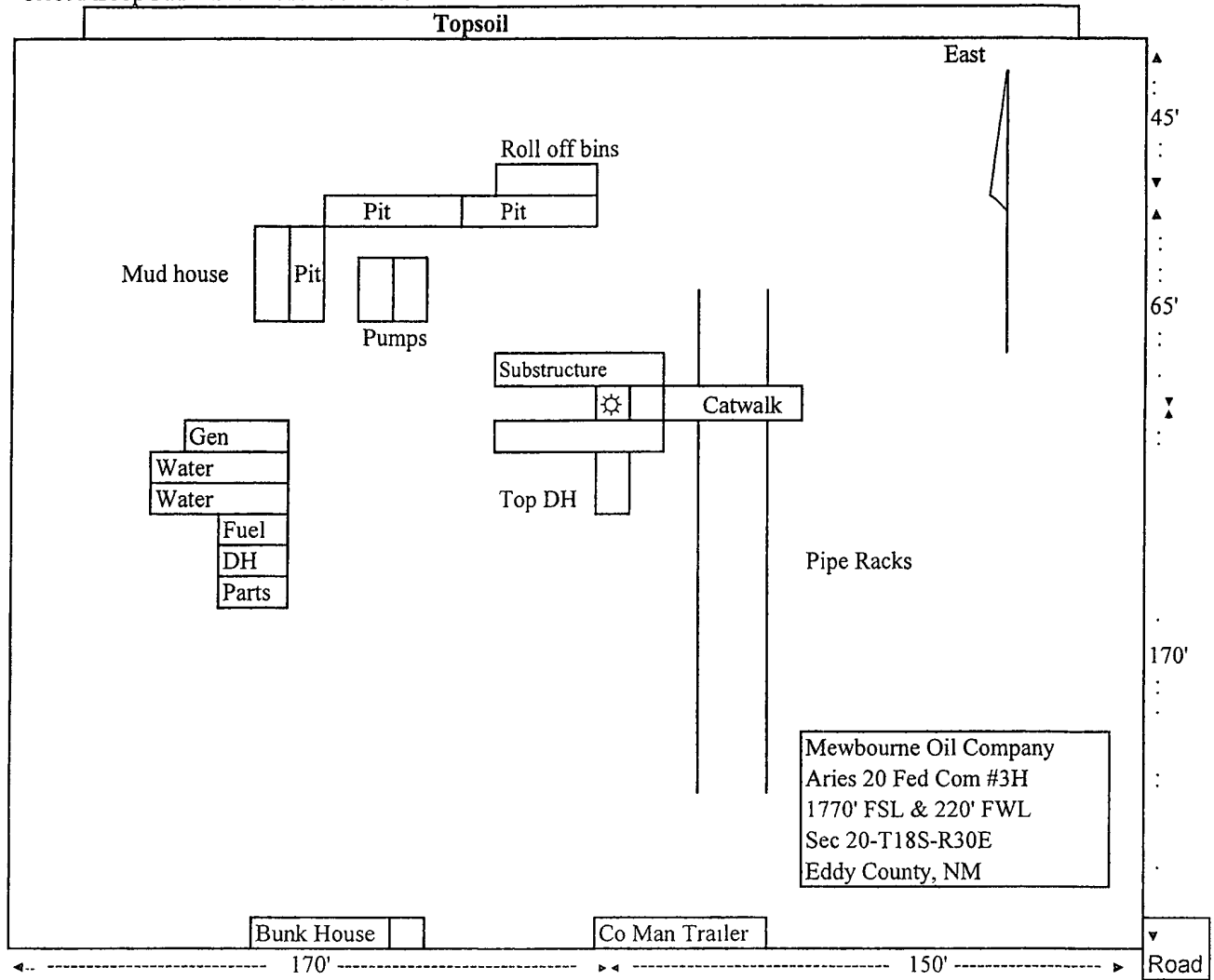


Exhibit 5