

DISTRICT I  
1625 N. FRENCH DR., HOBBS, NM 88240

State of New Mexico  
Energy, Minerals and Natural Resources Department

Form C-102

DISTRICT II  
1301 W. GRAND AVENUE, ARTESIA, NM 88210

OIL CONSERVATION DIVISION

Revised October 12, 2005  
Submit to Appropriate District Office  
State Lease - 4 Copies  
Fee Lease - 3 Copies

DISTRICT III  
1000 RIO BRAZOS RD., AZTEC, NM 87410

12310 SOUTH ST. FRANCIS DR.  
Santa Fe, New Mexico 87505

DISTRICT IV  
12310 S. ST. FRANCIS DR., SANTA FE, NM 87505

WELL LOCATION AND ACREAGE DEDICATION PLAT

AMENDED REPORT

API Number 30-015-39213	Pool Code 97866	Pool Name Mar Loco; Glorieta-Yeso
Property Code 308142	Property Name FOSTER EDDY	Well Number 29
OCRID No. 229137	Operator Name COG OPERATING, LLC	Elevation 3730'

Surface Location

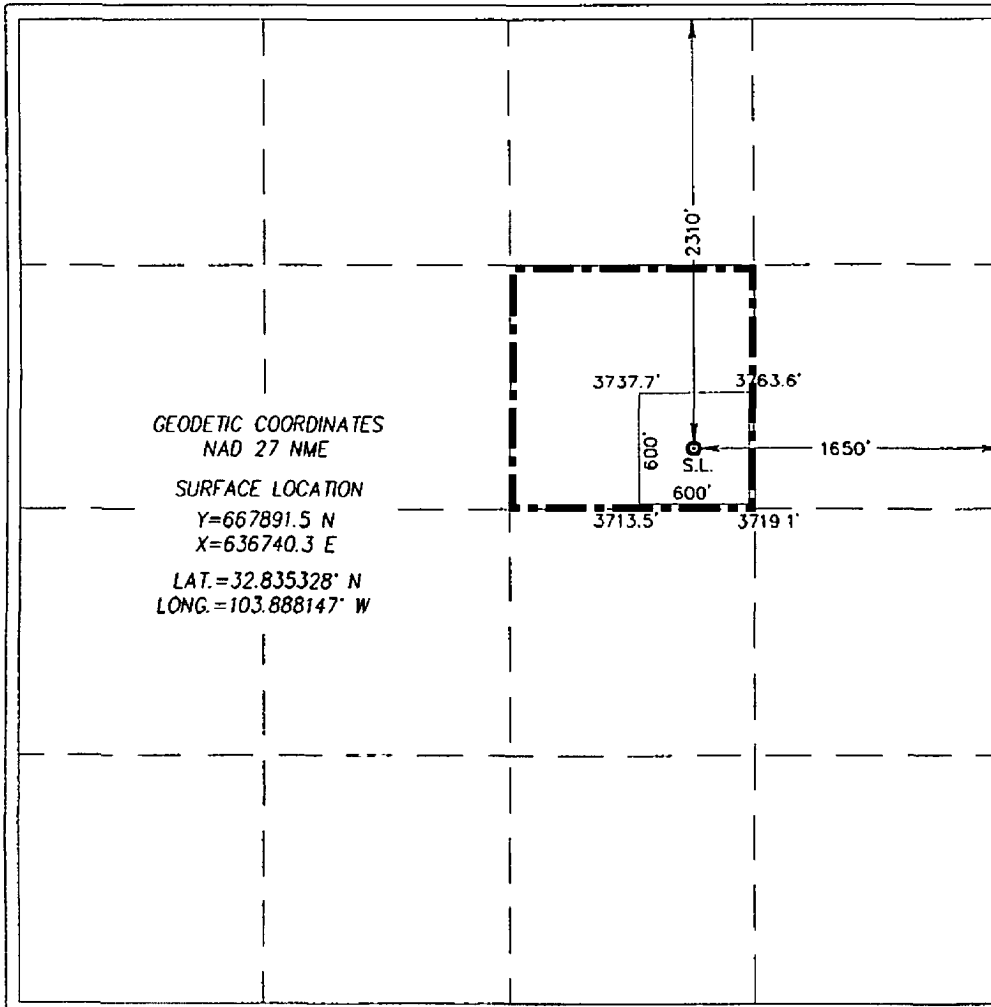
UL or lot No.	Section	Township	Range	Lot Idn	Feet from the	North/South line	Feet from the	East/West line	County
G	17	17-S	31-E		2310	NORTH	1650	EAST	EDDY

Bottom Hole Location If Different From Surface

UL or lot No.	Section	Township	Range	Lot Idn	Feet from the	North/South line	Feet from the	East/West line	County

Dedicated Acres 40	Joint or Infill	Consolidation Code	Order No.
-----------------------	-----------------	--------------------	-----------

NO ALLOWABLE WILL BE ASSIGNED TO THIS COMPLETION UNTIL ALL INTERESTS HAVE BEEN CONSOLIDATED  
OR A NON-STANDARD UNIT HAS BEEN APPROVED BY THE DIVISION



**OPERATOR CERTIFICATION**

I hereby certify that the information herein is true and complete to the best of my knowledge and belief, and that this organization either owns a working interest or unleased mineral interest in the land including the proposed bottom hole location or has a right to drill this well at this location pursuant to a contract with an owner of such mineral or working interest, or to a voluntary pooling agreement or a compulsory pooling order heretofore entered by the division.

Netha Aaron 12/1/11  
Signature Date  
Netha Aaron  
Printed Name  
oaron@concho.com

**SURVEYOR CERTIFICATION**

I hereby certify that the well location shown on this plat was plotted from field notes of actual surveys made by me or under my supervision, and that the same is true and correct to the best of my belief.

NOVEMBER 23, 2010  
Date Surveyed  
Signature & Seal of Professional Surveyor  
Ronald J. Eidson 12/14/2010  
10.11.1662  
Certificate No. GARY G. EIDSON 12641  
RONALD J. EIDSON 3239