

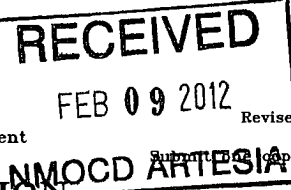
DISTRICT I
1625 N. French Dr., Hobbs, NM 88240
DISTRICT II
1301 W. Grand Avenue, Artesia, NM 88210
DISTRICT III
1000 Rio Brazos Rd., Aztec, NM 87410
DISTRICT IV
1220 S. St. Francis Dr., Santa Fe, NM 87505

State of New Mexico
Energy, Minerals and Natural Resources Department

OIL CONSERVATION DIVISION

1220 South St. Francis Dr.
Santa Fe, New Mexico 87505

"As Drilled"



Form C-102
Revised July 16, 2010
Submit to appropriate
District Office

WELL LOCATION AND ACREAGE DEDICATION PLAT

☒ AMENDED REPORT

API Number 30-015-38668	Pool Code 96209	Pool Name Cornal Canyon, NE (Delaware)
Property Code 306402	Property Name POKER LAKE UNIT	Well Number 347H
OGRID No. 260737	Operator Name BOPCO, L.P.	Elevation 3339'

Surface Location

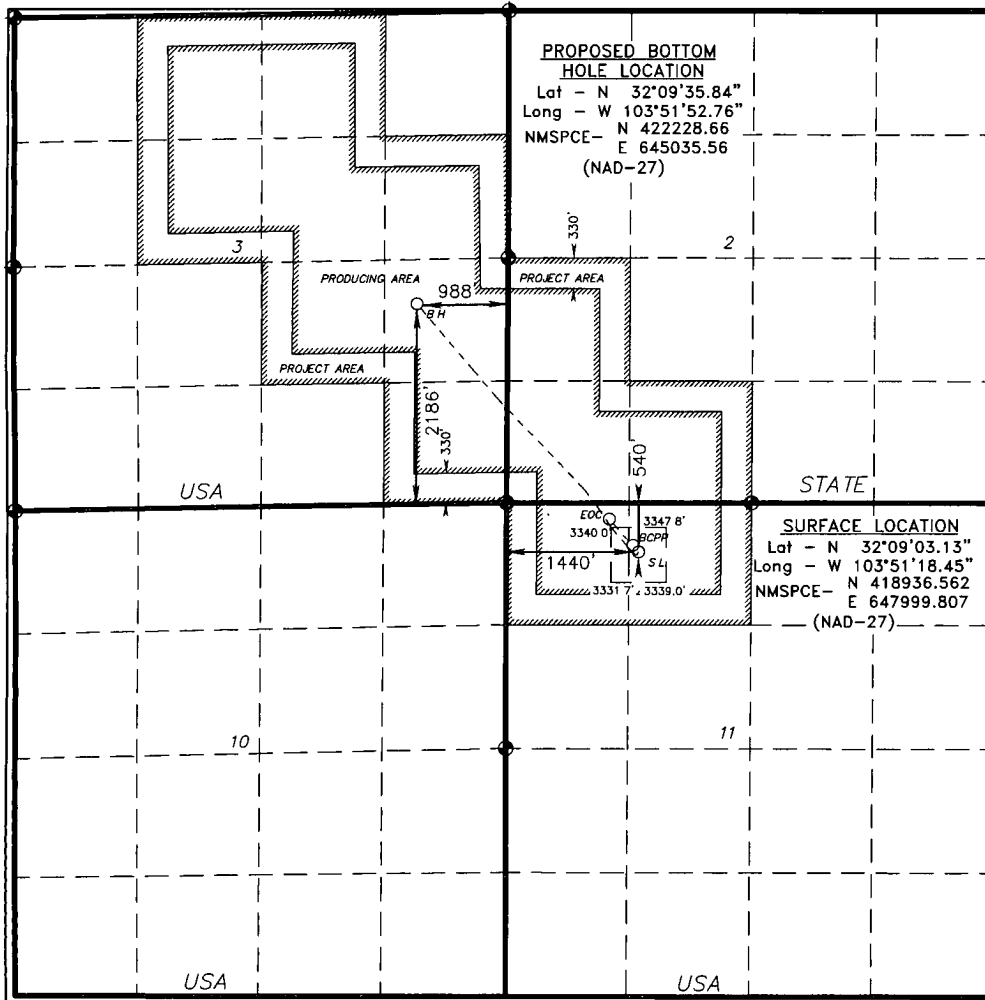
UL or lot No.	Section	Township	Range	Lot Idn	Feet from the	North/South line	Feet from the	East/West line	County
C	11	25 S	30 E		540	NORTH	1440	WEST	EDDY

Bottom Hole Location If Different From Surface

UL or lot No.	Section	Township	Range	Lot Idn	Feet from the	North/South line	Feet from the	East/West line	County
I	3	25 S	30 E		2186	SOUTH	988	EAST	EDDY

Dedicated Acres 520	Joint or Infill	Consolidation Code	Order No.
-------------------------------	-----------------	--------------------	-----------

NO ALLOWABLE WILL BE ASSIGNED TO THIS COMPLETION UNTIL ALL INTERESTS HAVE BEEN CONSOLIDATED
OR A NON-STANDARD UNIT HAS BEEN APPROVED BY THE DIVISION



OPERATOR CERTIFICATION I hereby certify that the information contained herein is true and complete to the best of my knowledge and belief, and that this organization either owns a working interest or unleased mineral interest in the land including the proposed bottom hole location or has a right to drill this well at this location pursuant to a contract with an owner of such a mineral or working interest, or to a voluntary pooling agreement or a compulsory pooling order heretofore entered by the division. Sandro J. Belt 2-7-12 Signature Date Sandro J. Belt Printed Name sjbelt@basspet.com Email Address	
SURVEYOR CERTIFICATION I hereby certify that the well location shown on this plat was plotted from field notes of actual surveys made by me or under my supervision, and that the same is true and correct to the best of my belief. GARY L. JONES DECEMBER 15, 2010 Date Surveyed Signature & Seal of 7977 Professional Surveyor W.O. No. 23827 Certificate No. Gary L. Jones 7977 BASIN SURVEYS 23827	