

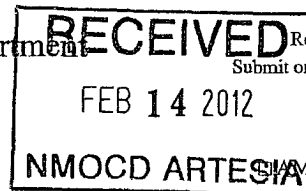
DISTRICT I  
1625 N. French Dr., Hobbs, NM 88240  
Phone: (575) 393-6161 Fax: (575) 393-0720

DISTRICT II  
811 S. First St., Artesia, NM 88210  
Phone: (575) 748-1283 Fax: (575) 748-9720

DISTRICT III  
1000 Rio Brazos Road, Aztec, NM 87410  
Phone: (505) 334-6178 Fax: (505) 334-6170

DISTRICT IV  
1220 S. St. Francis Dr., Santa Fe, NM 87505  
Phone: (505) 476-3460 Fax: (505) 476-3462

State of New Mexico  
Energy, Minerals & Natural Resources Department  
OIL CONSERVATION DIVISION  
1220 South St. Francis Dr.  
Santa Fe, New Mexico 87505



Form C-102

Revised August 1, 2011

Submit one copy to appropriate  
District Office

RECOMMENDED REPORT

WELL LOCATION AND ACREAGE DEDICATION PLAT

API Number <b>30-015- 39926</b>	Pool Code <b>96830</b>	Pool Name <b>Artesia; Glorieta - Yeso</b>
Property Code <b>308723</b>	Property Name <b>NB TWEEN STATE</b>	Well Number <b>31</b>
OGRID No.	Operator Name <b>APACHE CORPORATION</b>	Elevation <b>3687'</b>

Surface Location

UL or lot No. <b>B</b>	Section <b>25</b>	Township <b>17-S</b>	Range <b>28-E</b>	Lot Idn	Feet from the <b>860</b>	North/South line <b>NORTH</b>	Feet from the <b>1790</b>	East/West line <b>EAST</b>	County <b>EDDY</b>
---------------------------	----------------------	-------------------------	----------------------	---------	-----------------------------	----------------------------------	------------------------------	-------------------------------	-----------------------

Bottom Hole Location If Different From Surface

UL or lot No.	Section	Township	Range	Lot Idn	Feet from the	North/South line	Feet from the	East/West line	County
Dedicated Acres <b>40</b>	Joint or Infill	Consolidation Code	Order No.						

NO ALLOWABLE WILL BE ASSIGNED TO THIS COMPLETION UNTIL ALL INTERESTS HAVE BEEN CONSOLIDATED OR A NON-STANDARD UNIT HAS BEEN APPROVED BY THE DIVISION

	<p>OPERATOR CERTIFICATION</p> <p>I hereby certify that the information herein is true and complete to the best of my knowledge and belief, and that this organization either owns a working interest or unleased mineral interest in the land including the proposed bottom hole location or has a right to drill this well at this location pursuant to a contract with an owner of such mineral or working interest, or to a voluntary pooling agreement or a compulsory pooling order heretofore entered by the division</p> <p><i>Sorina L. Flores</i> 2/9/12 Signature Date</p> <p>Sorina L. Flores Printed Name</p> <p>Sorina.flores@apachecorp.com E-mail Address</p>
	<p>SURVEYOR CERTIFICATION</p> <p>I hereby certify that the well location shown on this plat was plotted from field notes of actual surveys made by me or under my supervision, and that the same is true and correct to the best of my belief.</p> <p>JANUARY 18, 2012</p> <p>Date of Survey</p> <p>Signature &amp; Seal of Professional Surveyor:  </p> <p>Certified Number... Gary C. Eidson 12641 Ronald J. Eidson 3239</p> <p>AF JWSC W.O. 12.11.0006</p>

GEODETIC COORDINATES  
NAD 27 NME

SURFACE LOCATION

Y=658990.4 N

X=563460.3 E

LAT = 32.811483° N

LONG = 104.126780° W

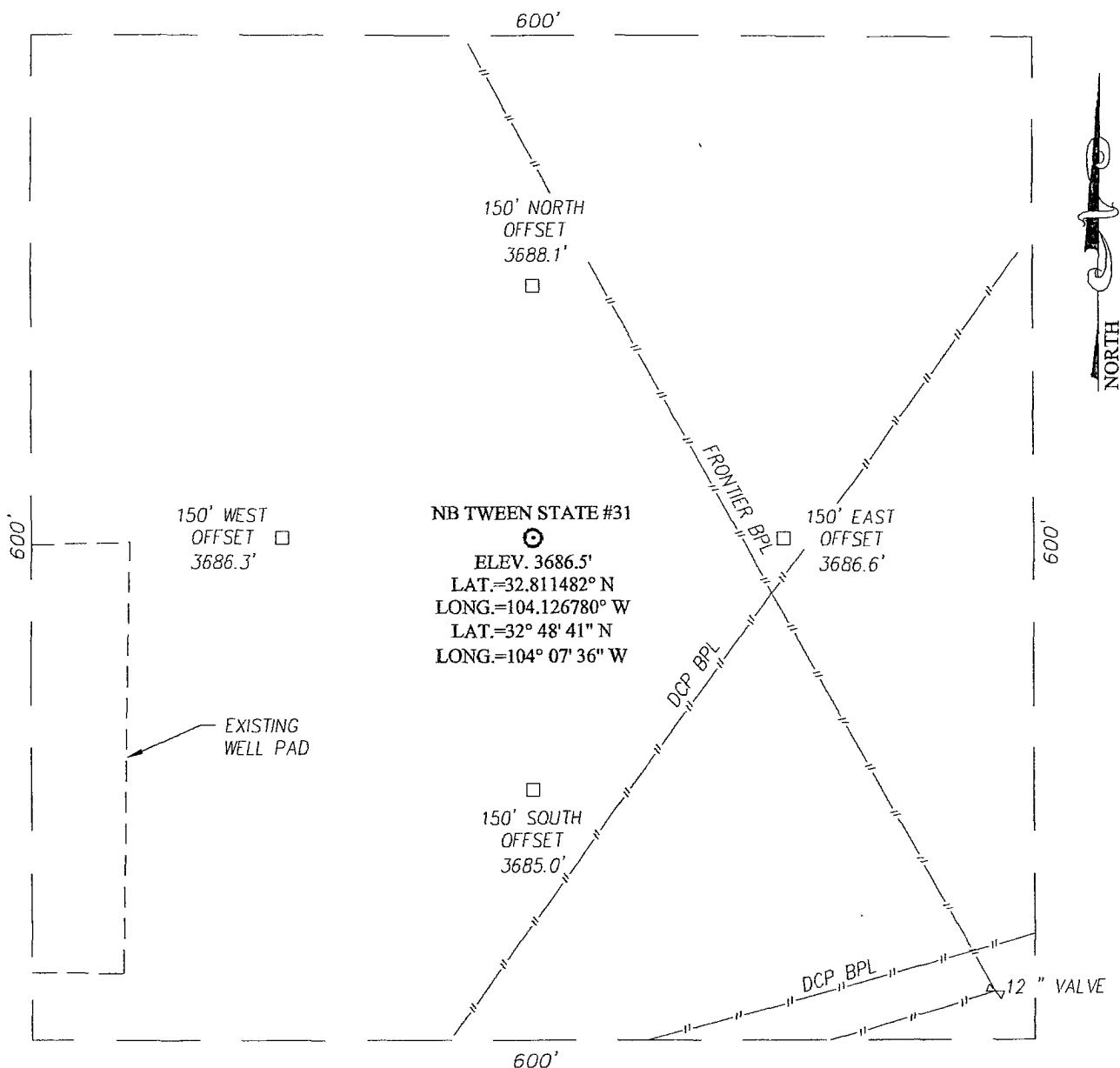
LAT = 32° 48' 41" N

LONG = 104° 07' 36" W

# SECTION 25, TOWNSHIP 17 SOUTH, RANGE 28 EAST, N.M.P.M.

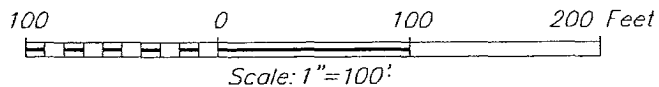
EDDY COUNTY

NEW MEXICO



## DIRECTIONS TO LOCATION


FROM THE INTERSECTION OF U.S. HWY #82 AND CO RD #209 GO EAST ON HWY. #82 APPROX 1.0 MILE. TURN LEFT AND GO NORTHEAST APPROX. 0.4 MILES TURN RIGHT AND GO EAST APPROX 0.2 MILES TO EXISTING NB TWEEN ST. #14. THE LOCATION STAKE IS 240 FEET EAST OF THIS PAD.



## APACHE CORPORATION

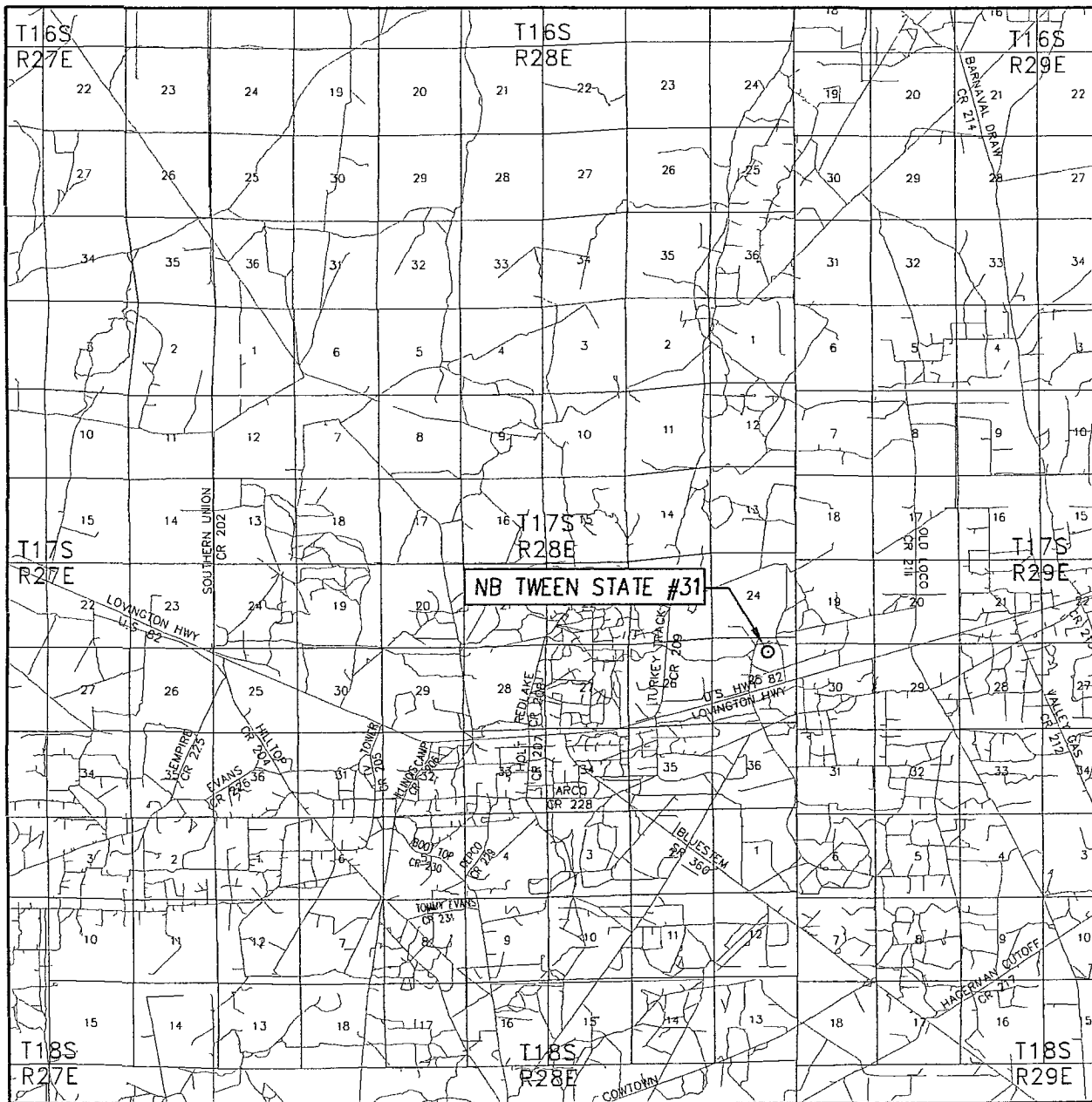
NB TWEEN STATE #31 WELL  
LOCATED 860 FEET FROM THE NORTH LINE  
AND 1790 FEET FROM THE EAST LINE OF SECTION 25,  
TOWNSHIP 17 SOUTH, RANGE 28 EAST, N.M.P.M.,  
EDDY COUNTY, NEW MEXICO

Survey Date. 1/18/12	Sheet 1 of 1 Sheets
W.O. Number: 12 11 0006	Dr. By AF Rev 1
Date: 1/31/12	Rel W.O.: 12110006 Scale: 1"=100'



PROVIDING SURVEYING SERVICES  
SINCE 1946  
**JOHN WEST SURVEYING COMPANY**  
412 N DAL PASO  
HOBBS, N.M. 88240  
(575) 393-3117

# VICINITY MAP



SCALE: 1" = 2 MILES

SEC. 25 TWP. 17-S RGE. 28-E

SURVEY N.M.P.M.


COUNTY EDDY STATE NEW MEXICO

DESCRIPTION 860' FNL & 1790' FEL

ELEVATION 3687'

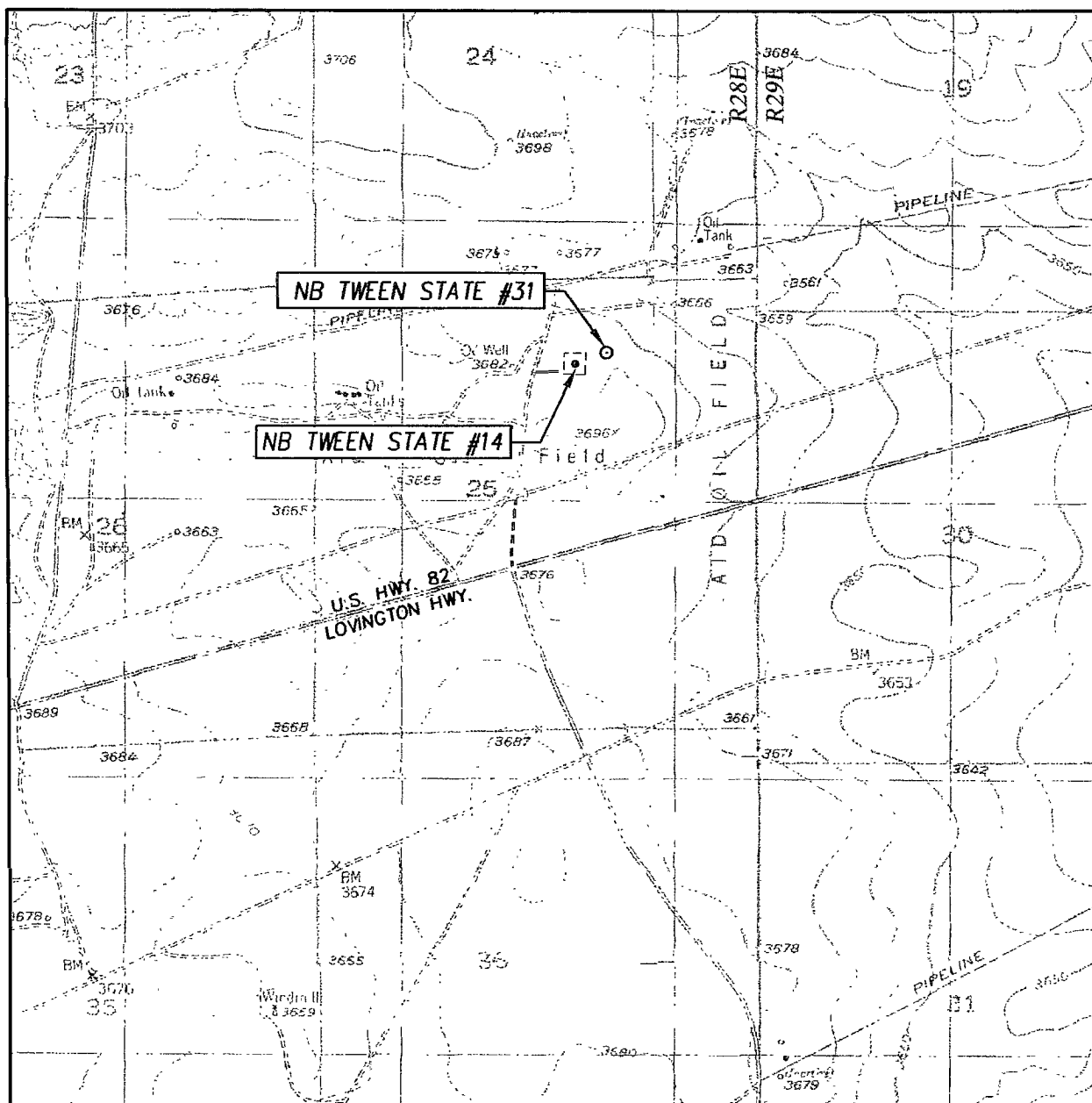
OPERATOR APACHE CORPORATION

LEASE NB TWEEN STATE



PROVIDING SURVEYING SERVICES  
SINCE 1946  
**JOHN WEST SURVEYING COMPANY**  
412 N DAL PASO  
HOBBS, N.M. 88240  
(575) 393-3117

# LOCATION VERIFICATION MAP



SCALE: 1" = 2000'

CONTOUR INTERVAL:  
RED LAKE, N.M. - 10'  
RED LAKE SE, N.M. - 10'

SEC. 25 TWP. 17-S RGE. 28-E

SURVEY \_\_\_\_\_ N.M.P.M.

COUNTY EDDY STATE NEW MEXICO


DESCRIPTION 860' FNL & 1790' FEL

ELEVATION 3687'

OPERATOR APACHE CORPORATION

LEASE NB TWEEN STATE

U.S.G.S. TOPOGRAPHIC MAP  
RED LAKE, N.M.



PROVIDING SURVEYING SERVICES  
SINCE 1946  
**JOHN WEST SURVEYING COMPANY**  
412 N. DAL PASO  
HOBBS, N.M. 88240  
(575) 393-3117