

UNITED STATES
DEPARTMENT OF THE INTERIOR
BUREAU OF LAND MANAGEMENT

OCD Artesia

FORM APPROVED
OMB NO. 1004-0135
Expires: July 31, 2010**SUNDRY NOTICES AND REPORTS ON WELLS**
*Do not use this form for proposals to drill or to re-enter an abandoned well. Use form 3160-3 (APD) for such proposals.*5. Lease Serial No
NMNM22080 ✓

6. If Indian, Allottee or Tribe Name

7. If Unit or CA/Agreement, Name and/or No.

SUBMIT IN TRIPLICATE - Other instructions on reverse side.

1. Type of Well

☒ Oil Well ☐ Gas Well ☐ Other

8. Well Name and No

BARCLAY FEDERAL 011 ✓

2. Name of Operator

✓ LINN OPERATING, INC.

Contact: TERRY B CALLAHAN

E-Mail: tcallahan@linnenergy.com

9. API Well No.

30-015-30063 ✓

3a. Address

600 TRAVIS STREET SUITE 5100
HOUSTON, TX 77002

3b. Phone No. (include area code)

Ph: 281-840-4272

10. Field and Pool, or Exploratory

LIVINGSTON RIDGE; DELAWARE ✓

4. Location of Well (Footage, Sec., T., R., M., or Survey Description)

Sec 12 T23S R31E Mer NMP NENE 760FNL 660FEL
32.323999 N Lat, 103.725137 W Lon

11. County or Parish, and State

EDDY COUNTY, NM

12. CHECK APPROPRIATE BOX(ES) TO INDICATE NATURE OF NOTICE, REPORT, OR OTHER DATA

TYPE OF SUBMISSION

TYPE OF ACTION

☒ Notice of Intent☐ Subsequent Report☐ Final Abandonment Notice☐ Acidize☐ Alter Casing☐ Casing Repair☐ Change Plans☐ Convert to Injection☐ Deepen☐ Fracture Treat☐ New Construction☒ Plug and Abandon☐ Plug Back☐ Production (Start/Resume)☐ Reclamation☐ Recomplete☐ Temporarily Abandon☐ Water Disposal☐ Water Shut-Off☐ Well Integrity☐ Other

13 Describe Proposed or Completed Operation (clearly state all pertinent details, including estimated starting date of any proposed work and approximate duration thereof. If the proposal is to deepen directionally or recompleat horizontally, give subsurface locations and measured and true vertical depths of all pertinent markers and zones. Attach the Bond under which the work will be performed or provide the Bond No. on file with BLM/BIA. Required subsequent reports shall be filed within 30 days following completion of the involved operations. If the operation results in a multiple completion or recompleat in a new interval, a Form 3160-4 shall be filed once testing has been completed. Final Abandonment Notices shall be filed only after all requirements, including reclamation, have been completed, and the operator has determined that the site is ready for final inspection.)

LINN moved a workover rig on location to attempt to fish out tubing and rods that were left in hole 4/24/2008 from the previous operator. LINN attempted to recover the fish on 2/8/2011 without success. LINN moved back on the well on 2/23/12-3/14/2012 and attempted to jar the fish and washover the fish without any success. After several fishing and washover attempts, LINN contacted the BLM Carlsbad office to get verbal approval to P&A the wellbore. Attached is the workover report, a current/proposed wellbore schematic, and proposed P&A procedure. LINN politely requests a quick turnaround on the P&A approval so that we can schedule this project behind our P&A rig that is soon to run out of projects.

RECEIVED

MAR 28 2012

NMOCD ARTESIARECLAMATION PROCEDURE
ATTACHEDSEE ATTACHED FOR
CONDITIONS OF APPROVAL*Ground Level Dry Hole Marker*

14 I hereby certify that the foregoing is true and correct.

Electronic Submission #133146 verified by the BLM Well Information System
For LINN OPERATING, INC., sent to the Carlsbad

Name (Printed/Typed) TERRY B CALLAHAN

Title REGULATORY SPECIALIST III

Signature (Electronic Submission)

Date 03/15/2012

THIS SPACE FOR FEDERAL OR STATE OFFICE USE

Approved By

James G. Jones

Title

SEPS

Date

3-24-12

Conditions of approval, if any, are attached. Approval of this notice does not warrant or certify that the applicant holds legal or equitable title to those rights in the subject lease which would entitle the applicant to conduct operations thereon.

Office

CFO

Title 18 U.S.C. Section 1001 and Title 43 U.S.C. Section 1212, make it a crime for any person knowingly and willfully to make to any department or agency of the United States any false, fictitious or fraudulent statements or representations as to any matter within its jurisdiction.

** OPERATOR-SUBMITTED ** OPERATOR-SUBMITTED ** OPERATOR-SUBMITTED **

*A 4/4/2012*Accepted for record
NMOCD

Wellbore Schematic

Well Name: Barclay Federal 11
 Location: A-12-23S-31E 760 FNL 660 FEL
 EDDY COUNTY, NM
 API #: 30-015-30063

Date Prepared: K. MURPHY

Last Updated: 14-Mar-12 D. Gonzales

Spud Date: 13-Oct-99

RR Date:

Spud Date to RR Date:

Completion Start Date:

Completion End Date:

Completion Total Days:

Co-ordinates:

Elevations.

GROUND:

KB:

Depths (KB):

PBTD:

TD:

8403'

8450'

All depths KB

Surf Csg
 13-3/8"
 Set @ 858'
 TOC @ Surf

Hole Size

17-1/2"

Surface Casing (10/13/99).

13-3/8" 48# set @ 858'

Cmt w/ Lead: 500 sxs 35/65 w/ 6% gel 2% Calcium Chloride 1/4#/sk CelloFlake

Tail: 200 sxs C I C 2% Calcium Chloride 1/4#/sk Cello Flake .005#/sk static free

TOC @ Surf

Hole Size

11"

Intermediate Casing (10/21/1999):

8-5/8" 32 #, J-55, set at 4440'

Cmt w/ Lead: 1200sx 3% Salt 1/4#/sk Cello Flake .005#/sk static free .005 GPS FP-13L

Tail: 200 sxs "C" 2% Calcium Chloride 1/4#/sk Cello Flake .005#/sk static free

Hole Size

7-7/8"

Production Casing (10/29/1999):

5-1/2" 57 jts 17# J-55 & 141 jts 15.5#, J-55, set @ 8450'

Cmt w/ Lead: 500 sx 35/65 1/4#/sk Cello Flake .005#/sk static free .005 GPS FP

Tail: 400 sxs C I H

TOC @ 4475'

Tubing Record (2/8/11 and 4/24/08):

Length (ft)

*FISH IN HOLE Lack of data on tubing.

TOF @ ~5282'

(49) Jts of 2-7/8" Tubing (Pump Barrel Stuck in tubing @ ~5500')

(1) SN

(1) TAC

(1) 4" Perf Sub

(3) Jts of 2-7/8" Mud Anchor/Tail Pipe

*Estimated remaining fish based on workover from 4/24/08

Intermediate Csg
 8-5/8"
 Set @ 4440'
 TOC @ Surf

Fish @ ~5282'

Notes:

1/18/11-2/8/11- Could not release TAC. Pump stuck inside tbg at 5500' TOF @ ~5382'.

3-14-12 - Tagged TOF @ 5282' and washed down to 5297', but could not get Fish out of hole.

Perforations:

11/3/1999

Bushy Canyon: 7335-7352' 2 SPF, 35 holes total

Cherry Canyon: 6872, 76, 78, 80, 82, 7000, 02, 04, 09, 10, 12, 32, 36, 39, 41, 44 (16 - 6" OD holes)

Cherry Canyon: 5112-6118 w/ 1 SPF 7 holes, 6660-6670 w/ 1 SPF 6 holes

TD @ 8450'

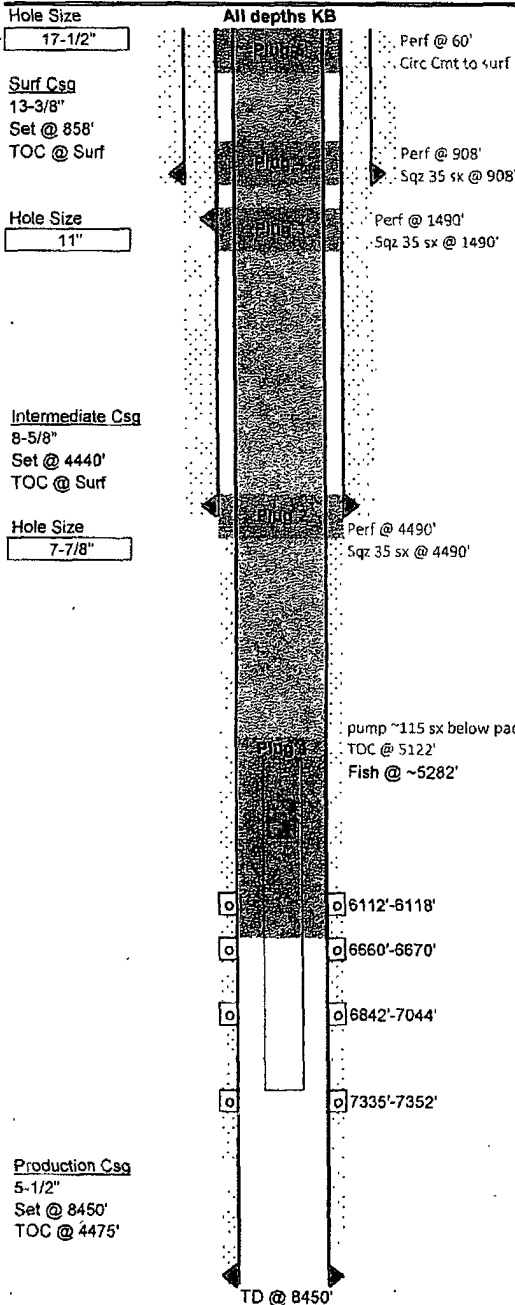
Production Csg
 5-1/2"
 Set @ 8450'
 TOC @ 4475'

Proposed Wellbore Schematic

Well Name: Barday Federal 11
 Location: A-12-23S-31E 760 FNL 660 FEL
 EDDY COUNTY, NM
 API #: 30-015-30063

Date Prepared: K MURPHY
 Last Updated: 14-Mar-12 D. Gonzales
 Spud Date: 13-Oct-99
 RR Date:
 Spud Date to RR Date:
 Completion Start Date:
 Completion End Date:
 Completion Total Days:
 Co-ordinates:

Elevations GROUND:
 KB:
 Depths (KB): PBTD: 8403'
 TD: 8450'



Surface Casing (10/13/99):
 13-3/8" 48# set @ 858'
 Cmt w/ Lead: 500 sxs 35/65 w/ 6% gel 2% Calcium Chloride 1/4#/sk CelloFlake
 Tail: 200 sxs Cl C 2% Calcium Chloride 1/4#/sk Cello Flake .005#/sk static free
 TOC @ Surf
Intermediate Casing (10/21/1999):
 8-5/8" 32 #, J-55, set at 4440'
 Cmt w/ Lead: 1200sx 3% Salt 1/4#/sk Cello Flake .005#/sk static free .005 GPS FP-13L
 Tail: 200 sxs "C" 2% Calcium Chloride 1/4#/sk Cello Flake .005#/sk static free

Production Casing (10/29/1999):
 5-1/2" 57 jts 17# J-55 & 141 jts 15.5#, J-55, set @ 8450'
 Cmt w/ Lead: 500 sx 35/65 1/4#/sk Cello Flake .005#/sk static free .005 GPS FP
 Tail: 400 sxs Cl H
 TOC @ 4475'

Tubing Record (2/8/11 and 4/24/08)

	Length (ft)
*FISH IN HOLE Lack of data on tubing.	
TOF @ ~5282'	
(49) Jts of 2-7/8" Tubing (Pump Barrel Stuck in tubing @ ~5500')	
(1) SN	
(1) TAC	
(1) 4' Perf Sub	
(3) Jts of 2-7/8" Mud Anchor/Tail Pipe	

*Estimated remaining fish based on workover from 4/24/08

Notes:
 1/18/11-2/8/11- Could not release TAC. Pump stuck inside tbg at 5500'. TOF @ ~5382'.
 3-14-12 - Tagged TOF @ 5282' and washed down to 5297', but could not get Fish out of hole.

Perforations:
 11/3/1999
 Bushy Canyon: 7335'-7352' 2 SPF, 35 holes total
 Cherry Canyon: 6872,76,78,80,82,7000 02,04,06,10,12,32,36,39,41,44 (16 - 67" OD holes)
 Cherry Canyon: 6112-6118 w/ 1 SPF 7 holes, 6660-6670 w/ 1 SPF 8 holes

Barclay Federal 11

Eddy County, NM

A-12-23S-31E 760 FNL 660 FEL

30-015-30063

3/15/12

Project Scope: Plug and Abandon the wellbore

Non Routine Equipment Needs:

Class "C" Cement

Packer for 5-1/2", 17# Casing

Mud Laden fluid – Minimum of 9 ppg (mixed at 25 sx per 100 barrels of water)

Procedure:

1. Test anchors prior to rigging up
2. MIRU plugging rig
3. Check casing and tubing pressures
4. Bleed off pressure and kill well as necessary.
5. NUBOP
6. TOOH with kill sub.
7. PU bit and scraper and TIH 5240', no need to go lower than 5240'.
8. TOOH and LD bit/scraper.
9. PU packer and TIH to ^{5200 +/-} 5100' and set. Establish injection rate to ensure that cement can be pumped below packer and through the fish. Prepare to pump cement through packer.
10. **(PLUG 1)** Pump ~115 sx of Class "C" through the packer or until the job starts to catch pressure. Release the packer and TOOH to LD packer. WOC over night.
11. TIH and tag TOC. If TOC is below ^{5150 +/-} 5122', then contact project engineer and pump (Plug 1B). If TOC is at or above 5122' then skip (Plug 1B).
 - **(PLUG 1B)** – TIH and spot plug from TOC to ^{5150 +/-} 5100'. WOC 4 hrs and tag.
12. PU packer and TIH to pressure test the plug to 500 PSI. If test fails, contact project engineer.
13. Circulate the hole with mud laden fluid.
14. **(PLUG 2)** Perforate @ ⁴⁵⁸⁵ 4490' and squeeze 35 sx of Class "C" cement at ⁴⁵⁸⁵ 4490' (estimated TOC will be ⁴²⁴⁵ 4136'), displace with 3.9 BBLs. WOC 4 hours and tag no lower than 4345'. This plug is to cover the base of the intermediate casing shoe. *Top Delaware & B/salt*

Contact Information:

David Gonzales – Asset Engineer
Cell – 832-350-6334
Office – 281-840-4055

Ron Ragland – Foreman
Cell – 575-942-8675

- 116/ 116/
15. **(Plug 3)** Perforate @ ~~1490'~~ Spot and sqz 35 sx of Class "C" cement at ~~1490'~~ (estimated TOC will be @ ~~1136'~~), displace with 4.4 BBLS. WOC and tag no lower than ~~1375'~~. This plug is to ensure that no more than 3000' exists between plugs. 106/
16. **(Plug 4)** Perforate @ 908'. Spot and sqz 35 sx of Class "C" (estimated TOC will be @ 554'), displace with 4.6 BBLS. WOC and tag no lower than ~~799'~~ This plug is to cover the base of the surface casing shoe. 808
17. **(Plug 5)** Perforate @ 60'. Establish circulation. Pump Class "C" cmt (estimated 20 sx to get circulation) down the 5-1/2" casing and circulate up the annulus between the 5-1/2" casing and 8-5/8" casing. Ensure that cement is adequately displaced behind pipe and inside of the 5-1/2" casing.
18. Cut off the wellhead, cap the well, and install a dry hole marker.
19. RD P&A rig.
20. Clean location and schedule the inspection of the location.

Contact Information:

David Gonzales – Asset Engineer
Cell – 832-350-6334
Office – 281-840-4055

Ron Ragland - Foreman
Cell – 575-942-8675

BARCLAY FEDERAL 11
API #30-015-30063
WORKOVER REPORT

OBJECTIVE: RETRIEVE FISH LEFT IN HOLE

Daily Operations			
Rpt #	Start Date	End Date	Summary
1	2/23/2012	2/23/2012	MI PU Shut down due to wind.
2	2/24/2012	2/24/2012	MI RUPU, POH w/tbg. Run impression block. SDFD
3	2/27/2012	2/27/2012	Caught fish and jarred for 4 hrs. with no movement. Released overshot, SION
4	2/28/2012	2/28/2012	POH w/overshot. SION due to high winds.
5	2/29/2012	2/29/2012	Attempted outside backoff, couldn't get 18' below TOF. POH, had piece of tbg. in overshot. PU and RIH w/washpipe. SION
6	3/1/2012	3/1/2012	Found tbg. plugged, tried pumping and swabbing. POH w/tbg. and tools. found tools and 1st DC full of iron sulfide. Cleaned out tools. SION
7	3/2/2012	3/2/2012	Washed over 18' of fish. Shoe started acting up. Pulled up hole and SION.
8	3/5/2012	3/5/2012	POH to check shoe. RBIH, tagged 5' higher. PU and SION.
9	3/6/2012	3/6/2012	RU Foam air unit, cut 13'. Shoe quit cutting, started POH. SION
10	3/7/2012	3/7/2012	POH w/shoe, recovered 19 1/2' of tbg. in shoe. RBIH w/WP. Cut 4' and quit. PU & SION
11	3/8/2012	3/8/2012	Started POH w/tbg. SD due to high wind.
12	3/9/2012	3/9/2012	Finished POH w/shoe. Didn't find anything. RIH w/overshot, tagged fish and POH. Didn't have anything in overshot. SION
13	3/12/2012	3/12/2012	Drove to location. 0 PSI. RIH w/ shoe and 6 washpipe, 6 drill collars and 152 JTS. RU power swivel and stripper head. Tag up @ 5282', washed down to 5292'. SION. Drove crew to yard.
14	3/13/2012	3/13/2012	Circulate well, start drilling from 5292' - washed down to 5297'. Lay down power swivel & 2 JTS. POH w/ tubing, drill collars, washpipe and lay down shoe. SION
15	3/14/2012	3/14/2012	Drove crew to location. SIP 80 PSI. Bleed well down. RD power swivel to trailer. RIH w/ 6 - washpipe and 6 drill collars. POH w/ 6 drill collars and 6 washpipe, laying them down. Standby for orders. Shut well in.

Sec. 12 23 S - 31 E
760 N 460 E (NENE)

SALT SECTIONS TOP 1111

BASE 4315

RIMP NA
Sect. Aot

CAVE / KARST

SPEC. WATER

TOC SURF

Act F @ 908 SQZ TO 808 PROD
woc Tag

Act F @ 1161 SQZ TO 1061
woc Tag

FORMATIONS Rustbr 873

Salado 1111

A/Salt 4315

4245 WOC Tag
(Del, shre. B/salt)

4585

Run CBL Find } Delaware 451
TOC: (Act / spot?) } Bone Spring 8411

5200 PK. PK. Attempt to est. ing rate

Fish @ 5282 SQZ adequate
to fill wellbore
woc Tag No lower
than 5232.

DVT

PERFORATIONS 6112-6118

6660-6670

6842-7044

7335-7352

HOLE SIZE 17 1/2"

700 SX CMT
Circ.

11-40
CASING SIZE 13 3/8 48#
TD 858

HOLE SIZE 11"

1400 SX CMT.
Circ.

J-55
CASING SIZE 8 5/8 32#
TD 4440

HOLE SIZE 7 7/8

900 SX
TOC 4475 (?)

CASING SIZE 5 1/2 17#
TD 8450