

District I  
1625 N French Dr., Hobbs, NM 88240  
Phone (575) 393-6161 Fax (575) 393-0720  
District II  
811 S First St., Artesia, NM 88210  
Phone (575) 748-1283 Fax (575) 748-9720  
District III  
1000 Rio Brazos Road, Aztec, NM 87410  
Phone (505) 334-6178 Fax (505) 334-6170  
District IV  
1220 S St Francis Dr., Santa Fe, NM 87505  
Phone (505) 476-3460 Fax (505) 476-3462

State of New Mexico

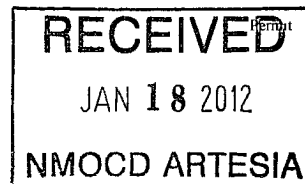
Form C-101  
Revised December 16, 2011

Energy Minerals and Natural Resources

Oil Conservation Division

1220 South St. Francis Dr.

Santa Fe, NM 87505



APPLICATION FOR PERMIT TO DRILL, RE-ENTER, DEEPEN, PLUGBACK, OR ADD A ZONE

<sup>1</sup> Operator Name and Address <b>Three Rivers Operating Company, L.L.C.</b> <b>1122 S. Capital of Texas Hwy Suite 325</b> <b>Austin, TX 78746</b>		<sup>2</sup> OGRID Number <b>272295</b>
		<sup>3</sup> API Number <b>30-015-21081</b>
<sup>4</sup> Property Code <b>39156</b>	<sup>5</sup> Property Name <b>Chelsi</b>	<sup>6</sup> Well No <b>001</b>

<sup>7</sup> Surface Location

UL - Lot	Section	Township	Range	Lot Idn	Feet from	N/S Line	Feet From	E/W Line	County
<b>J</b>	<b>2</b>	<b>26S</b>	<b>25E</b>		<b>1980</b>	<b>South</b>	<b>1980</b>	<b>East</b>	<b>Eddy</b>

<sup>8</sup> Pool Information

<b>SWD: Penn</b>	<b>96113</b>
------------------	--------------

Additional Well Information

<sup>9</sup> Work Type <b>E</b>	<sup>10</sup> Well Type <b>S</b>	<sup>11</sup> Cable/Rotary <b>R</b>	<sup>12</sup> Lease Type <b>S</b>	<sup>13</sup> Ground Level Elevation <b>3687</b>
<sup>14</sup> Multiple <b>N</b>	<sup>15</sup> Proposed Depth <b>10100</b>	<sup>16</sup> Formation <b>Penn</b>	<sup>17</sup> Contractor <b>Unknown</b>	<sup>18</sup> Spud Date <b>As soon as approved</b>
Depth to Ground water <b>25'</b>	Distance from nearest fresh water well <b>&lt; 1 mile</b>			Distance to nearest surface water <b>&lt; 1 mile</b>

<sup>19</sup> Proposed Casing and Cement Program

Type	Hole Size	Casing Size	Casing Weight/ft	Setting Depth	Sacks of Cement	Estimated TOC
<b>Surface</b>	<b>17 1/2"</b>	<b>13 3/8"</b>	<b>61#</b>	<b>199</b>	<b>200</b>	<b>In Place-Surface</b>
<b>Inter.</b>	<b>12 1/2"</b>	<b>9 5/8"</b>	<b>36#</b>	<b>2655</b>	<b>900</b>	<b>In Place-Surface</b>
<b>Prod</b>	<b>8 3/4"</b>	<b>5 1/2"</b>	<b>17#</b>	<b>6205</b>	<b>850</b>	<b>2500</b>

Casing/Cement Program: Additional Comments

<b>5 1/2" casing left in well 11875-6205 when PA. Work pending approval of C108 which is currently in preparation. Enclosure; before and after well diagrams</b>
--

Proposed Blowout Prevention Program

Type	Working Pressure	Test Pressure	Manufacturer
<b>Hydril</b>	<b>5000</b>	<b>5000</b>	<b>NA</b>

I hereby certify that the information given above is true and complete to the best of my knowledge and belief.

I further certify that the drilling pit will be constructed according to NMOC D guidelines ☐, a general permit ☒, or an (attached) alternative OCD-approved plan ☐.

Signature: *Billy E. Prichard*

Printed name: **Billy E. Prichard**

Title: **agent for 3 Rivers Operating Company, LLC**

E-mail Address: **billy@pwllc.net**

Date: **1/6/2012** Phone **432-934-7680**

OIL CONSERVATION DIVISION

Approved By.

Title:

Approved Date:

Expiration Date: **4/9/2014**

Conditions of Approval Attached

DISTRICT I  
1625 N. French Dr., Hobbs, NM 88240  
Phone (575) 393-8181 Fax: (575) 393-0720

DISTRICT II  
811 S. First St., Artesia, NM 88210  
Phone (575) 748-1283 Fax: (575) 748-0720

DISTRICT III  
1000 Rio Brazos Rd., Aztec, NM 87410  
Phone (505) 334-6178 Fax: (505) 334-6170

DISTRICT IV  
1220 S. St. Francis Dr., Santa Fe, NM 87505  
Phone (505) 476-3480 Fax: (505) 476-3482

State of New Mexico  
Energy, Minerals and Natural Resources Department

OIL CONSERVATION DIVISION  
1220 South St. Francis Dr.  
Santa Fe, New Mexico 87505

RECEIVED

APR 09 2012

NMOC D ARTESIA

Form C-102

Revised August 1, 2011

Submit one copy to appropriate  
District Office

WELL LOCATION AND ACREAGE DEDICATION PLAT

☐ AMENDED REPORT

API Number <b>30-015-21081</b>	Pool Code <b>96113</b>	Pool Name <b>SWD; Penn</b>
Property Code <b>39156</b>	Property Name <b>CHELSI</b>	Well Number <b>1</b>
OGRID No. <b>272295</b>	Operator Name <b>THREE RIVERS OPERATING CO. LLC.</b>	Elevation <b>3587'</b>

Surface Location

UL or lot No. <b>J</b>	Section <b>2</b>	Township <b>26 S</b>	Range <b>25 E</b>	Lot Idn	Feet from the <b>1980</b>	North/South line <b>SOUTH</b>	Feet from the <b>1980</b>	East/West line <b>EAST</b>	County <b>EDDY</b>
---------------------------	---------------------	-------------------------	----------------------	---------	------------------------------	----------------------------------	------------------------------	-------------------------------	-----------------------

Bottom Hole Location If Different From Surface

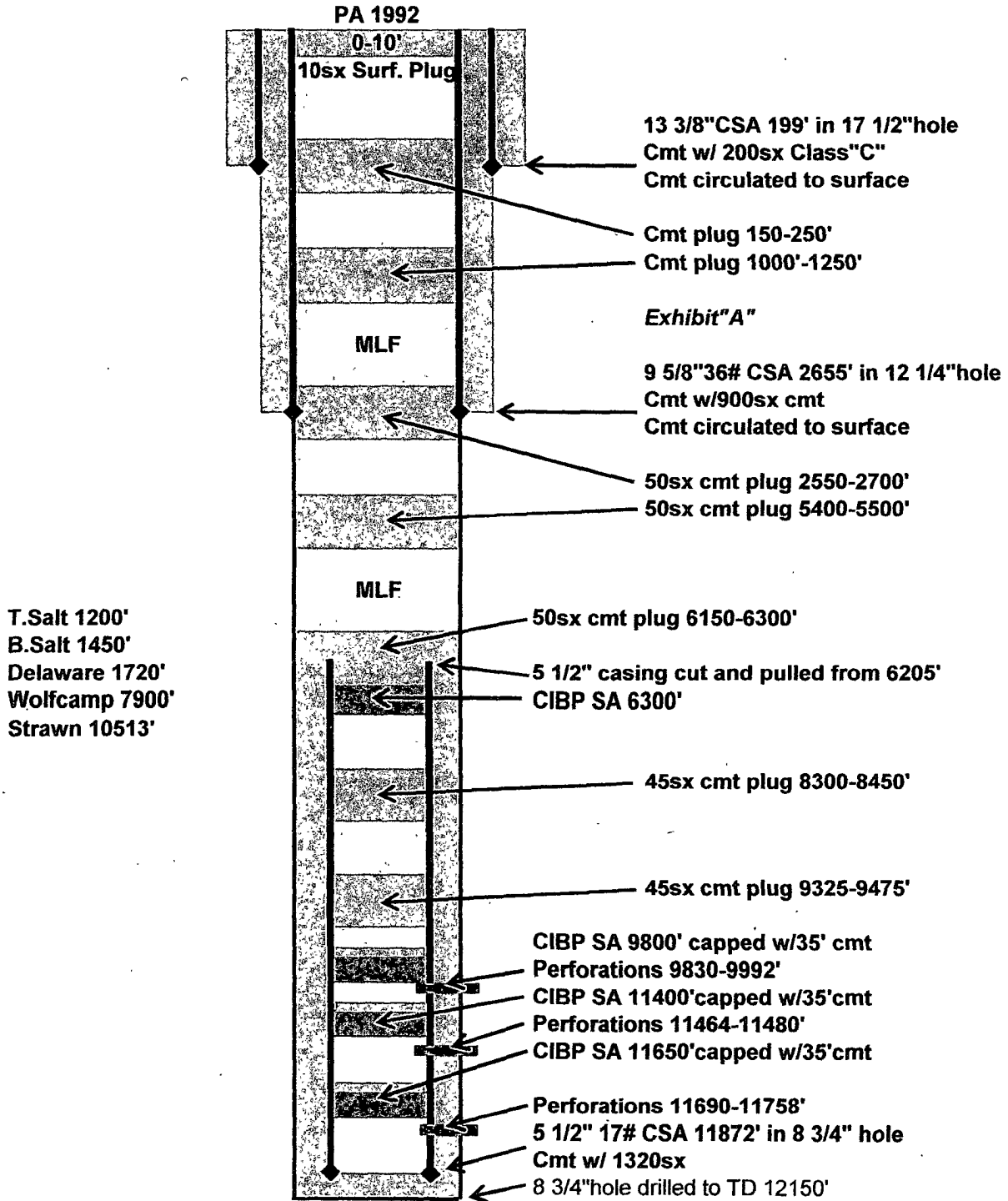
UL or lot No.	Section	Township	Range	Lot Idn	Feet from the	North/South line	Feet from the	East/West line	County
---------------	---------	----------	-------	---------	---------------	------------------	---------------	----------------	--------

Dedicated Acres <b>40</b>	Joint or Infill	Consolidation Code	Order No.
------------------------------	-----------------	--------------------	-----------

NO ALLOWABLE WILL BE ASSIGNED TO THIS COMPLETION UNTIL ALL INTERESTS HAVE BEEN CONSOLIDATED  
OR A NON-STANDARD UNIT HAS BEEN APPROVED BY THE DIVISION

<div><p><b>RECEIVED</b> APR 09 2012 NMOC D ARTESIA</p></div> <div><p><u>SURFACE LOCATION</u> Lat - N 32°04'11.69" Long - W 104°21'57.21" NMSPCE- N 389173.373 E 531768.797 (NAD-83)</p><p>S.L.</p><p>1980'</p><p>1980'</p></div>	<p><b>OPERATOR CERTIFICATION</b></p> <p>I hereby certify that the information contained herein is true and complete to the best of my knowledge and belief, and that this organization either owns a working interest or unleased mineral interest in the land including the proposed bottom hole location or has a right to drill this well at this location pursuant to a contract with an owner of such a mineral or working interest, or to a voluntary pooling agreement or a compulsory pooling order heretofore entered by the division.</p> <p><u>Billy E. Prichard</u> 4/2/12 Signature Date</p> <p><u>Billy E. Prichard</u> Printed Name</p> <p><u>billy@pwellc.net</u> Email Address</p> <p><b>SURVEYOR CERTIFICATION</b></p> <p>I hereby certify that the well location shown on this plat was plotted from field notes of actual surveys made by me or under my supervision, and that the same is true and correct to the best of my belief.</p> <p>MARCH 15 2012 Date Surveyed</p> <p><u>[Signature]</u> Signature &amp; Seal of Professional Surveyor</p> <p>7977</p> <p>Certificate No. Gary L. Jones 7977</p> <p>BASIN SURVEYS</p>
--	---

H.E. Lee  
 Chelsi # 1  
 API # 30-015-21081  
 UL"J", Section 2, T26S, R25  
 Eddy County, NM  
 Prior to Drill out and conversion to SWD



BEP

Drawing not to Scale

[www.pwllc.net](http://www.pwllc.net)

Three Rivers Operating Company, LLC

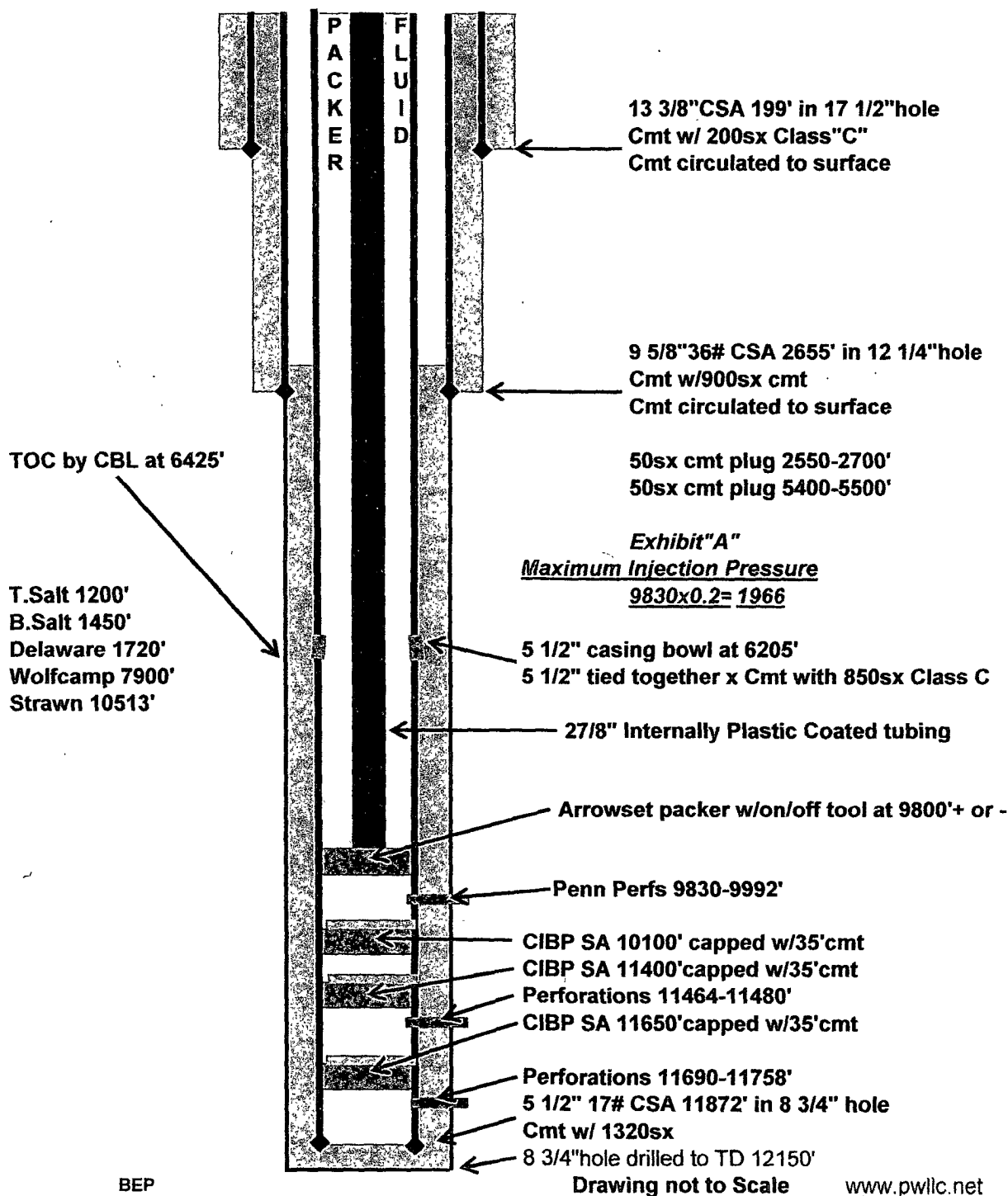
Chelsi # 1

API # 30-015-21081

UL"J", Section 2, T26S, R25

Eddy County, NM

After conversion to SWD



Drawing not to Scale

[www.pwllc.net](http://www.pwllc.net)

SECTION 2, TOWNSHIP 26 SOUTH, RANGE 25 EAST, N.M.P.M.,  
EDDY COUNTY, NEW MEXICO.

THREE RIVERS OPERATING CO. LLC

CHELSEI #1

ELEV. - 3587'

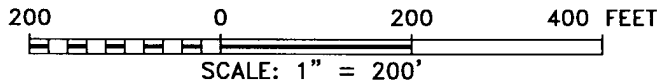
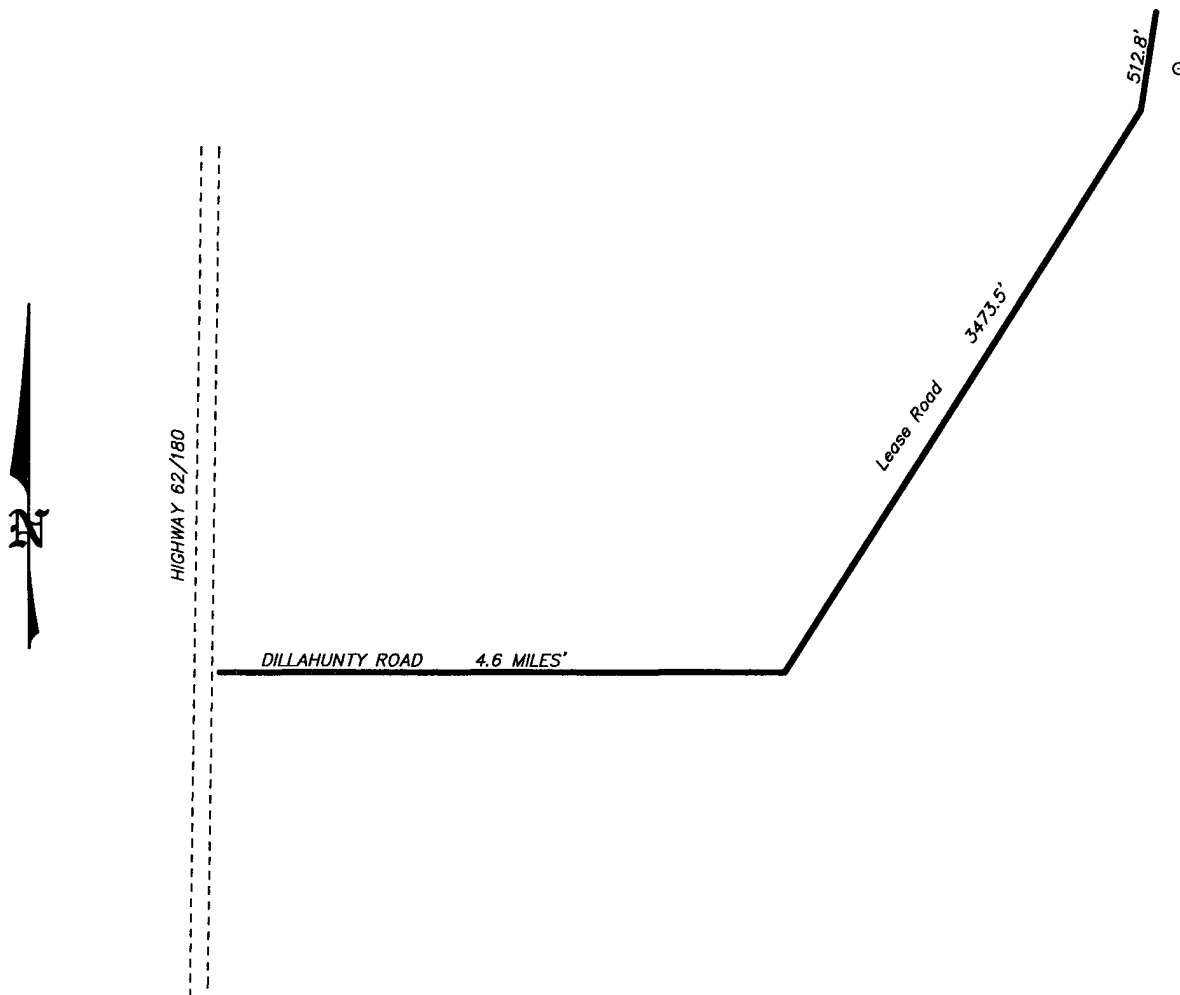
Lat - N 32°04'11.69"

Long - W 104°21'57.21"

NMSPCE- N 389173.373

E 531768.797

(NAD-83)



Directions to Location:

FROM DRY HOLE CHELSI #1 GO SOUTH WEST ON  
LEASE ROAD 3985 FEET TO INTERSECTION OF LEASE  
ROAD AND DILLAHUNTY ROAD FROM INTERSECTION  
GO WEST 4.6 MILES TO HIGHWAY 62/180

**BASIN SURVEYS** P.O. BOX 1786-HOBBS, NEW MEXICO

W.O. Number: 26369 Drawn By: J. GOAD

Date: 3-15-2012 Disk: JG - 26369WELL

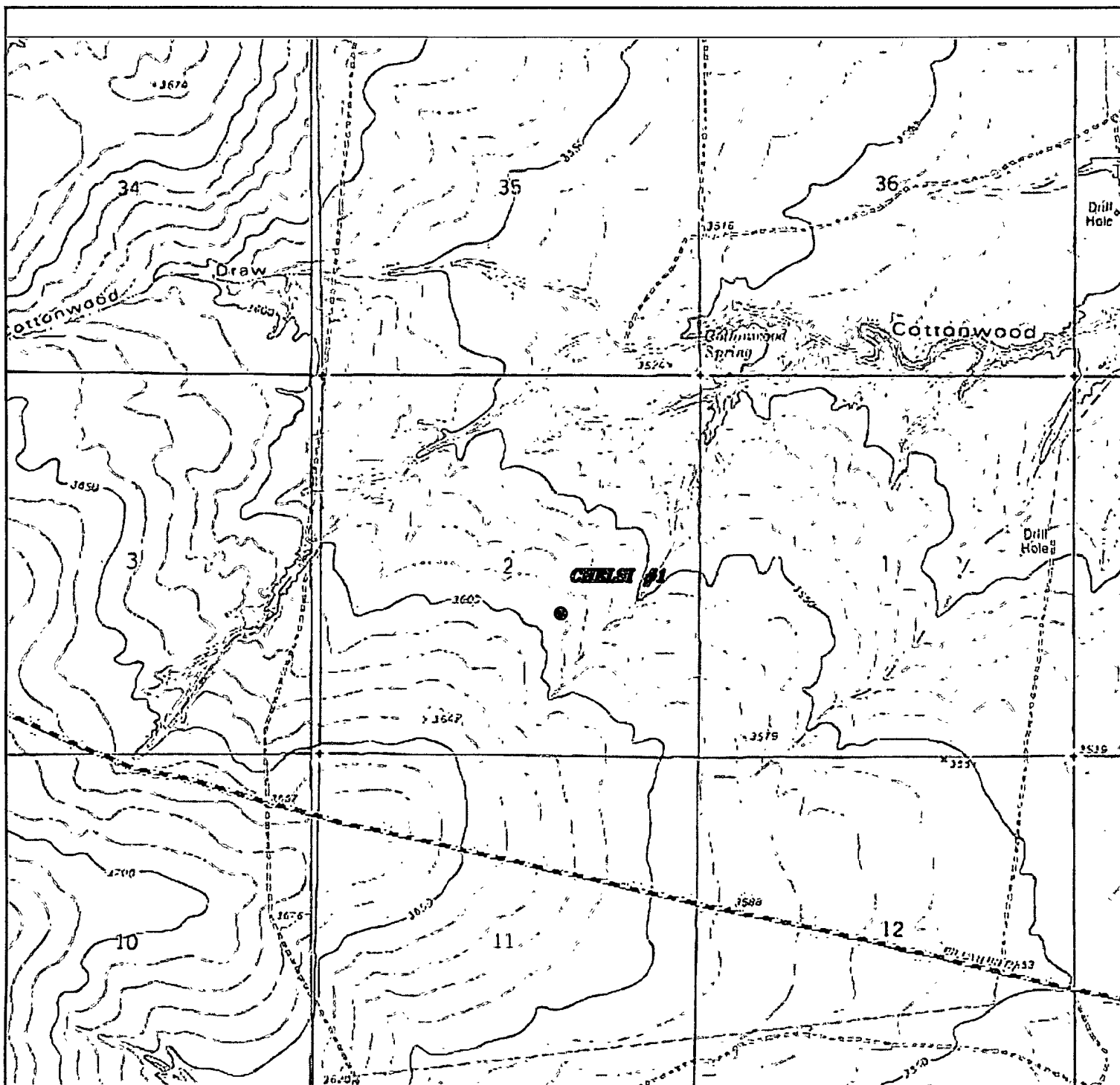
THREE RIVERS OPERATING CO. LLC.

REF: CHELSI #1 / WELL PAD TOPO

THE CHELSIE #1 LOCATED 1980'

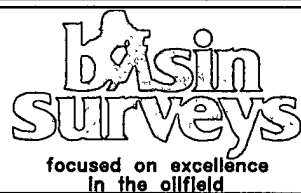
FROM THE SOUTH LINE AND 1980' FROM THE EAST LINE OF  
SECTION 2, TOWNSHIP 26 SOUTH, RANGE 25 EAST,  
N.M.P.M., EDDY COUNTY, NEW MEXICO.

Survey Date: 3-14-2012 Sheet 1 of 1 Sheets



# **CHELSI #1**

Located 1980' FSL and 1980' FEL  
 Section 2, Township 26 South, Range 25 East,  
 N.M.P.M., Eddy County, New Mexico.



P.O. Box 1786  
 1120 N. West County Rd.  
 Hobbs, New Mexico 88241  
 (575) 393-7316 - Office  
 (575) 392-2206 - Fax  
 basinsurveys.com

W.O. Number: JG - 26369

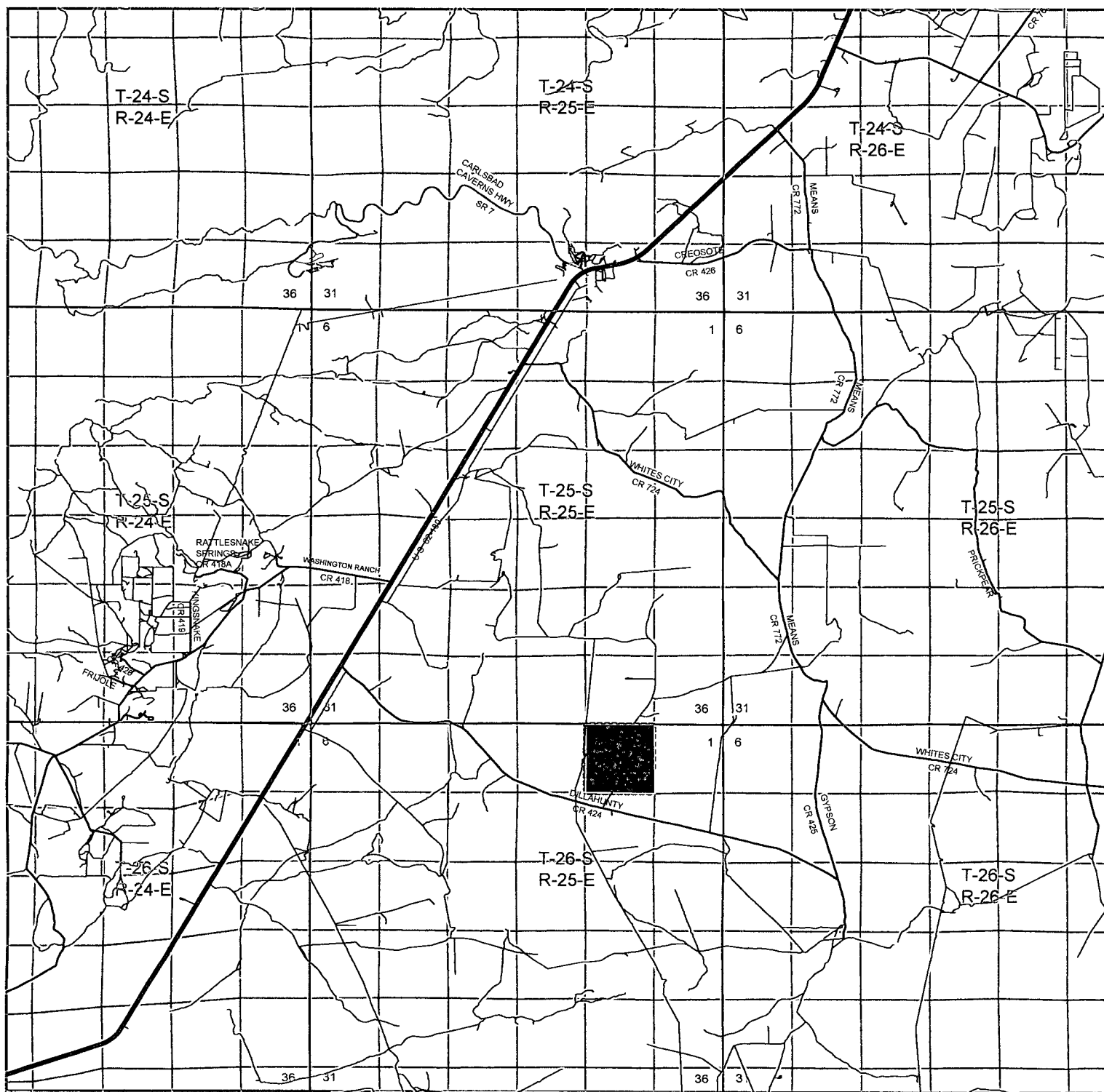
Survey Date: 3-14-2012

Scale: 1" = 2000'

Date: 3-15-2012



**THREE RIVERS  
 OPERATING CO.  
 LLC.**



## CHELSI #1

Located 1980' FSL and 1980' FEL  
Section 2, Township 26 South, Range 25 East,  
N.M.P.M., Eddy County, New Mexico.

**basin**  
**surveys**  
focused on excellence  
in the oilfield

P.O. Box 1786  
1120 N. West County Rd.  
Hobbs, New Mexico 88241  
(575) 393-7316 - Office  
(575) 392-2206 - Fax  
basinsurveys.com

W.O. Number: JG - 26369

Survey Date: 3-14-2012

Scale: 1" = 2 Miles

Date: 3-15-2012



THREE RIVERS  
OPERATING CO.  
LLC.