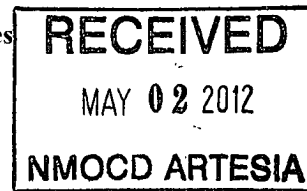


District I
1625 N French Dr, Hobbs, NM 88240
Phone (575) 393-6161 Fax (575) 393-0720
District II
811 S First St., Artesia, NM 88210
Phone (575) 748-1283 Fax (575) 748-9720
District III
1000 Rio Brazos Road, Aztec, NM 87410
Phone (505) 334-6178 Fax (505) 334-6170
District IV
1220 S St Francis Dr., Santa Fe, NM 87505
Phone (505) 476-3460 Fax (505) 476-3462

State of New Mexico
Energy Minerals and Natural Resources
Oil Conservation Division
1220 South St. Francis Dr.
Santa Fe, NM 87505



Form C-101
Revised August 1, 2011
Permit

APPLICATION FOR PERMIT TO DRILL, RE-ENTER, DEEPEN, PLUGBACK, OR ADD A ZONE

¹ Operator Name and Address COG Operating, LLC 550 W. Texas Suite 100 Midland, Texas 79701		² OGRID Number 229137
		³ API Number 30-015-35726
⁴ Property Code 36623	⁵ Property Name Dasher 16 State	⁶ Well No. 1

⁷ Surface Location

UL - Lot P	Section 16	Township 16S	Range 30E	Lot Idn	Feet from 330	N/S Line South	Feet From 330	E/W Line East	County Eddy
----------------------	----------------------	------------------------	---------------------	---------	-------------------------	--------------------------	-------------------------	-------------------------	-----------------------

⁸ Pool Information

HENSHAW; QU-GB-SA	36620
--------------------------	--------------

Additional Well Information

⁹ Work Type RC	¹⁰ Well Type O	¹¹ Cable/Rotary R	¹² Lease Type State	¹³ Ground Level Elevation 3793
¹⁴ Multiple N	¹⁵ Proposed Depth 5,000	¹⁶ Formation Paddock	¹⁷ Contractor	¹⁸ Spud Date ASAP
Depth to Ground water		Distance from nearest fresh water well		Distance to nearest surface water

¹⁹ Proposed Casing and Cement Program

Type	Hole Size	Casing Size	Casing Weight/ft	Setting Depth	Sacks of Cement	Estimated TOC

Casing/Cement Program: Additional Comments

COG Operating LLC respectfully requests to recomplete to the Yeso to test the Paddock. See Attachments.
--

Proposed Blowout Prevention Program

Type	Working Pressure	Test Pressure	Manufacturer

I hereby certify that the information given above is true and complete to the best of my knowledge and belief.
I further certify that the drilling pit will be constructed according to NMOCD guidelines ☒, a general permit ☐, or an (attached) alternative OCD-approved plan ☐.

K-C

Printed name. Kanicia Castillo

Title: Lead Regulatory Analyst

E-mail Address. kcastillo@concho.com

Date: 05/01/2012

Phone: 432-685-4332

OIL CONSERVATION DIVISION

Approved By.

T. C. Shepard
Geologist

Title

Approved Date.

5/2/2012

Expiration Date.

5/2/2014

Conditions of Approval Attached

Proving Subsequent Well Bore Schematic.

DISTRICT I
1625 N. French Dr., Hobbs, NM 88240

DISTRICT II
1301 W. Grand Avenue, Artesia, NM 88210

DISTRICT III
1000 Rio Brazos Rd., Aztec, NM 87410

DISTRICT IV
1220 S. St. Francis Dr., Santa Fe, NM 87505

State of New Mexico
Energy, Minerals and Natural Resources Department

Form C-102
Revised October 12, 2005

Submit to Appropriate District Office
State Lease - 4 Copies
Fee Lease - 3 Copies

OIL CONSERVATION DIVISION
1220 South St. Francis Dr.
Santa Fe, New Mexico 87505

☐ AMENDED REPORT

WELL LOCATION AND ACREAGE DEDICATION PLAT

API Number 30-015-35726	Pool Code 30620	Pool Name HENSHAW; QU-GB-SA
Property Code 36623	Property Name DASHER "16" STATE	Well Number 1
OGRID No. 229137	Operator Name C.O.G. OPERATING L.L.C.	Elevation 3793'

Surface Location

UL or lot No.	Section	Township	Range	Lot Idn	Feet from the	North/South line	Feet from the	East/West line	County
P	16	16 S	30 E		330	SOUTH	330	EAST	EDDY

Bottom Hole Location If Different From Surface

UL or lot No.	Section	Township	Range	Lot Idn	Feet from the	North/South line	Feet from the	East/West line	County
Dedicated Acres 40	Joint or Infill	Consolidation Code	Order No.						

NO ALLOWABLE WILL BE ASSIGNED TO THIS COMPLETION UNTIL ALL INTERESTS HAVE BEEN CONSOLIDATED
OR A NON-STANDARD UNIT HAS BEEN APPROVED BY THE DIVISION

	<p>OPERATOR CERTIFICATION</p> <p>I hereby certify that the information contained herein is true and complete to the best of my knowledge and belief, and that this organization either owns a working interest or unleased mineral interest in the land including the proposed bottom hole location pursuant to a contract with an owner of such a mineral or working interest, or to a voluntary pooling agreement or a compulsory pooling order heretofore entered by the division.</p> <p><i>K C</i> 5/1/12 Signature Date Kania Castillo Printed Name</p>
	<p>SURVEYOR CERTIFICATION</p> <p>I hereby certify that the well location shown on this plat was plotted from field notes of actual surveys made by me or under my supervision and that the same is true and correct to the best of my belief.</p> <p>JUNE 05 2007 Date Surveyed Signature of Gary L. Jones Professional Surveyor Certificate No. Gary L. Jones 7977</p>
	<p>BASIN SURVEYS</p>
	<p>W. Jones 2024</p>

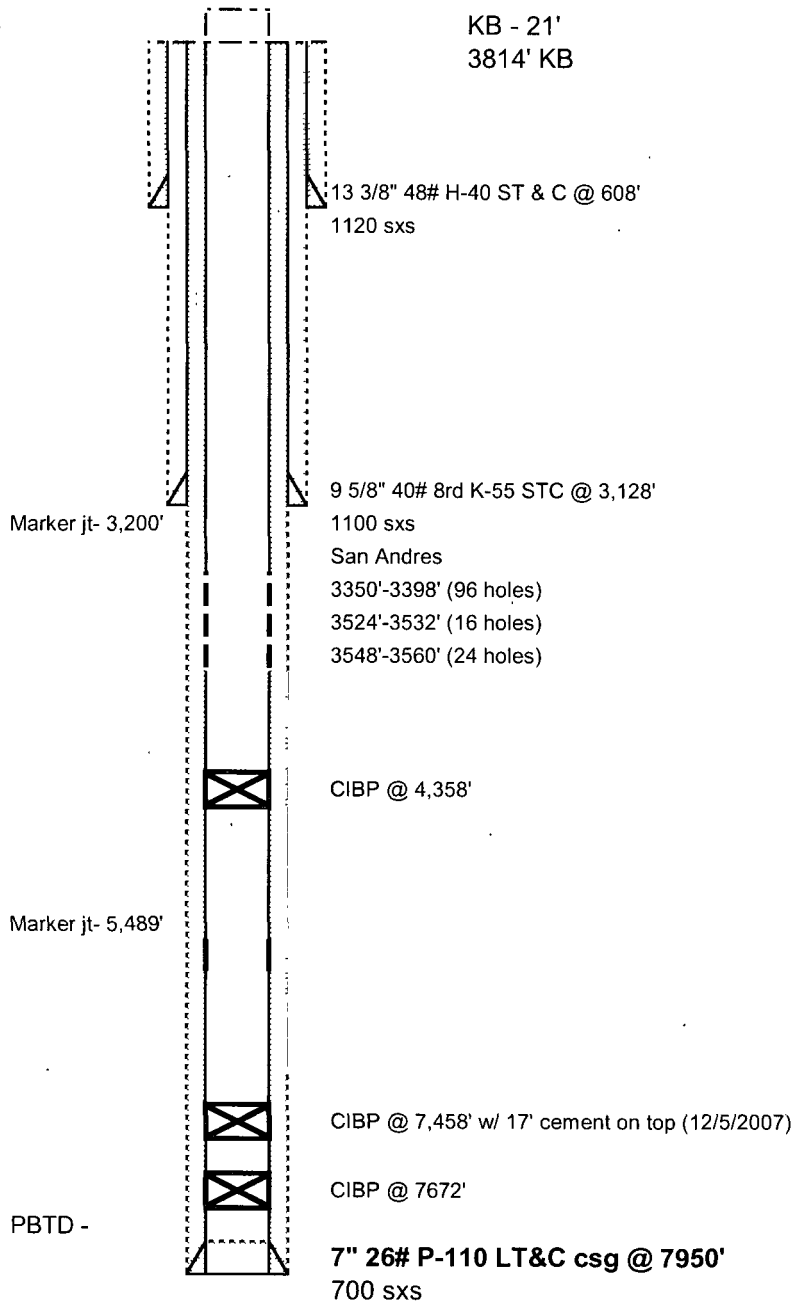
COG OPERATING, LLC

Lease & Well # Dasher 16 State #1

SPUD - 9/14/2007

Elevation -
3793' GL

KB - 21'
3814' KB



COG Operating LLC

**Dasher 16 State #1
API# 30-015-35726
Unit P, Sec 16, 16S, 30E
330 FSL & 330 FEL
Eddy County, New Mexico**

Procedure:

- 1) MIRU
- 2) POOH w/ production equipment. LD
- 3) TIH w/ bit, (6) DC, 2 7/8" L80 WS
- 4) Break circulation, tag CIBP @ 4,358'
- 5) DO CIBP
- 6) Continue to RIH to at least 5000'
- 7) TOO H w/ bit, DC and tubing. LD bit & DC
- 8) MIRU wireline
- 9) Set CIBP @ 5000'
- 10) Dump 2 sxs cement
- 11) Perforate Paddock interval 4480'-4680'
- 12) RDMO wireline
- 13) RIH w/ arrowset pkr. Set @ 4440'
- 14) Test backside to 500#
- 15) Acidize Paddock interval
- 16) Swab Test Paddock interval
- 17) RDMO. Evaluate results