

DISTRICT I
1625 N. French Dr., Hobbs, NM 88240
DISTRICT II
1301 W. Grand Avenue, Artesia, NM 88210

DISTRICT III
1000 Rio Brazos Rd., Aztec, NM 87410

DISTRICT IV
1220 S. St. Francis Dr., Santa Fe, NM 87505

State of New Mexico
Energy, Minerals and Natural Resources Department

Form C-102
Revised July 16, 2010

OIL CONSERVATION DIVISION
1220 South St. Francis Dr.
Santa Fe, New Mexico 87505

RECEIVED

APR 23 2012

NMOCD ARTESIA

AMENDED REPORT

WELL LOCATION AND ACREAGE DEDICATION PLAT

API Number 30-015-39686	Pool Code 65010	Pool Name Winchester; Bone Spring
Property Code 37768	Property Name RUGER "6" FEDERAL COM	Well Number 4H
OGRID No. 14744	Operator Name MEWBOURNE OIL COMPANY	Elevation 3285'

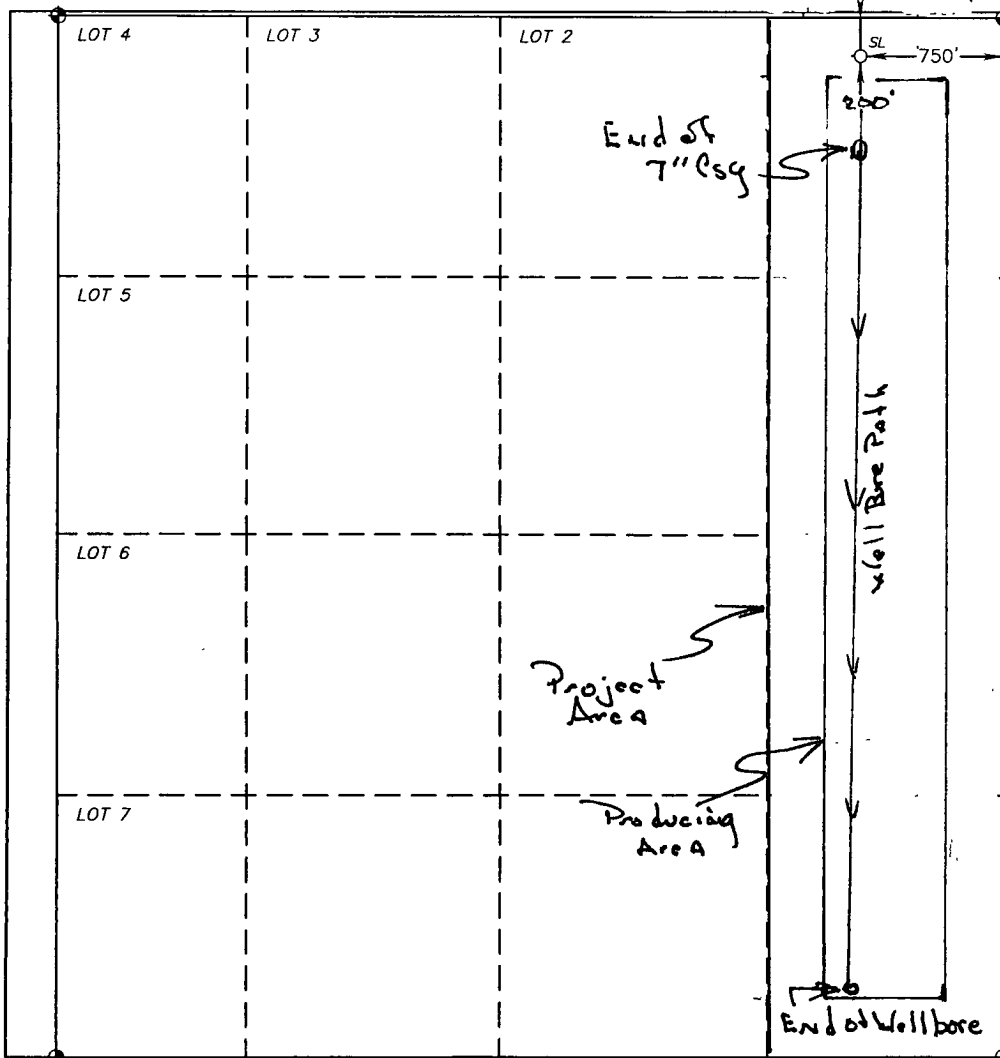
Surface Location

UL or lot No. LOT 1	Section 6	Township 20 S	Range 29 E	Lot Idn	Feet from the 200	North/South line NORTH	Feet from the 750	East/West line EAST	County EDDY
------------------------	--------------	------------------	---------------	---------	----------------------	---------------------------	----------------------	------------------------	----------------

Bottom Hole Location If Different From Surface

UL or lot No. P	Section 6	Township 20S	Range 29E	Lot Idn	Feet from the 363'	North/South line South	Feet from the 772'	East/West line East	County Eddy
Dedicated Acres 160	Joint or Infill	Consolidation Code	Order No.						

NO ALLOWABLE WILL BE ASSIGNED TO THIS COMPLETION UNTIL ALL INTERESTS HAVE BEEN CONSOLIDATED
OR A NON-STANDARD UNIT HAS BEEN APPROVED BY THE DIVISION



OPERATOR CERTIFICATION

I hereby certify that the information contained herein is true and complete to the best of my knowledge and belief, and that this organization either owns a working interest or unleased mineral interest in the land including the proposed bottom hole location or has a right to drill this well at this location pursuant to a contract with an owner of such a mineral or working interest, or to a voluntary pooling agreement or a compulsory pooling order, heretofore entered by the division.

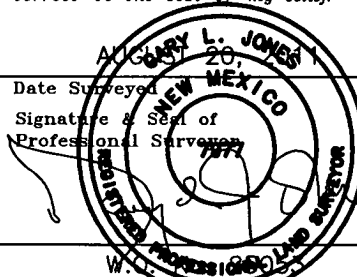
Signature G. M. Young Date 3/27/12

Printed Name N M Young

Email Address

SURVEYOR CERTIFICATION

I hereby certify that the well location shown on this plat was plotted from field notes of actual surveys made by me or under my supervision, and that the same is true and correct to the best of my belief.



Certificate No. Gary L. Jones 7977

BASIN SURVEYS 25053