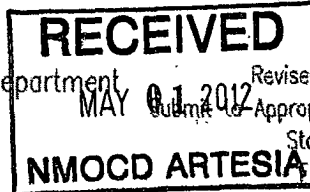


District I
1625 N. French Dr., Hobbs, NM 88240
District II
1301 W. Grand Avenue, Artesia, NM 88210
District III
1000 Rio Brazos Rd., Aztec, NM 87410
District IV
1220 S. St. Francis Dr., Santa Fe, NM 87505

State of New Mexico
Energy, Minerals & Natural Resources Department
OIL CONSERVATION DIVISION
1220 South St. Francis Dr.
Santa Fe, NM 87505



Form C-402
Revised October 12, 2005
Appropriate District Office
State Lease- 4 Copies
Fee Lease- 3 Copies

☒ AMENDED REPORT

WELL LOCATION AND ACREAGE DEDICATION PLAT

API Number 30-015-39219	Pool Code 97148	Pool Name Hood Nash Draw Delaware, SD
Property Code 304798	Property Name CYPRESS 34 FED.	Well Number 7H
OGRID No. 16656	Operator Name OXY USA INC.	Elevation 3038.2'

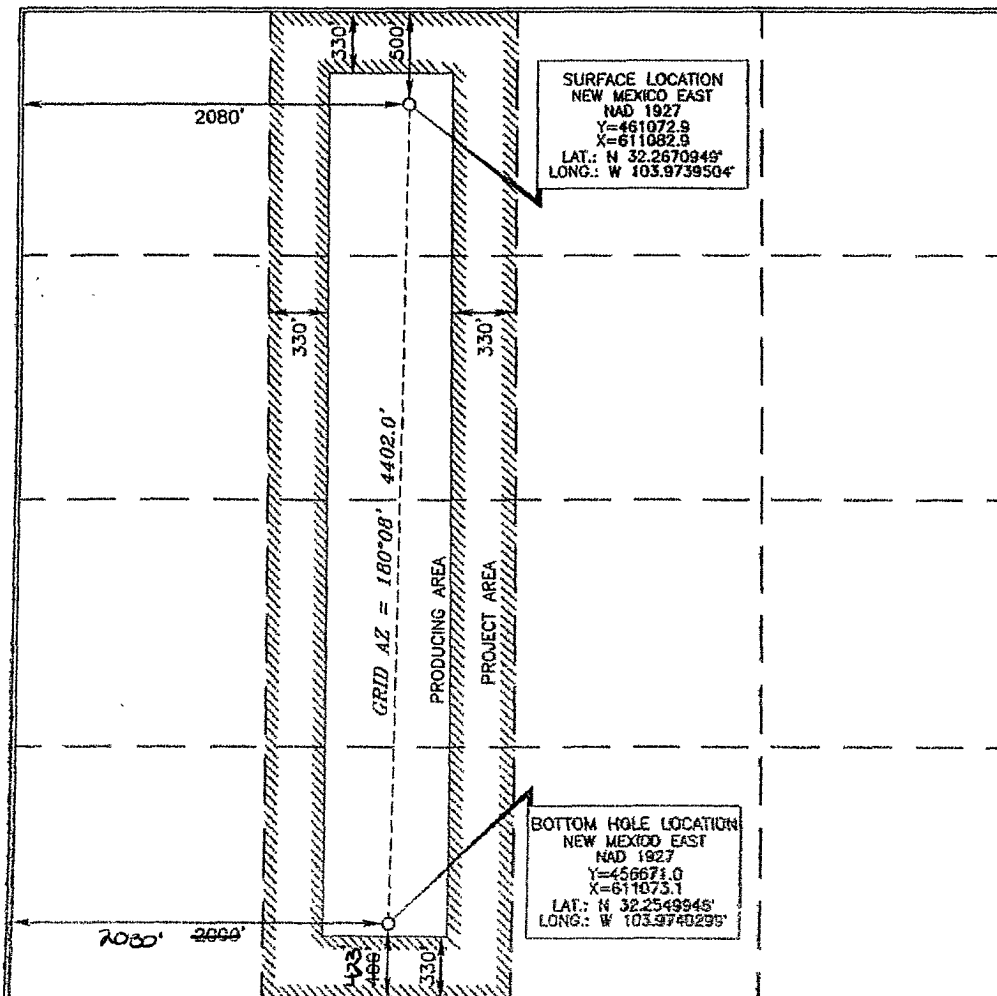
Surface Location

UL or lot no. C	Section 34	Township 23 SOUTH	Range 29 EAST, N.M.P.M.	Lot Idn	Feet from the 500'	North/South line NORTH	Feet from the 2080'	East/West line WEST	County EDDY
---------------------------	----------------------	-----------------------------	-----------------------------------	---------	------------------------------	----------------------------------	-------------------------------	-------------------------------	-----------------------

Bottom Hole Location If Different From Surface

UL or lot no. N	Section 34	Township 23 SOUTH	Range 29 EAST, N.M.P.M.	Lot Idn 423	Feet from the 400'	North/South line SOUTH	Feet from the 2000'	East/West line WEST	County EDDY
Dedicated Acres 160	Joint or Infill N	Consolidation Code	Order No.						

No allowable will be assigned to this completion until all interests have been consolidated or a non-standard unit has been approved by the division.



OPERATOR CERTIFICATION

I hereby certify that the information contained herein is true and complete to the best of my knowledge and belief, and that this organization either owns a working interest or unleased mineral interest in the land including the proposed bottom hole location or has a right to drill this well at this location pursuant to a contract with an owner of such a mineral or working interest, or to a voluntary pooling agreement or a compulsory pooling order heretofore entered by the division.

David Stewart 2/2/10
Signature Date

David Stewart
Printed Name

SURVEYOR CERTIFICATION

I hereby certify that the well location shown on this plat was plotted from field notes or actual survey made by me or under my supervision, and that the same is true and correct to the best of my belief.

SEP 03 2009
Date of Survey

Signature and Seal of Professional Surveyor

Terry J. Abel 1/6/2010
Certificate Number 15079

WO# 090903WZ--d (KX)