

District I
1625 N French Dr., Hobbs, NM 88240
District II
1301 W Grand Avenue, Artesia, NM 88210
District III
1000 Rio Brazos Rd., Aztec, NM 87410
District IV
1220 S St Francis Dr., Santa Fe, NM 87505

State of New Mexico
Energy, Minerals & Natural Resources

Form C-104
Revised October 15, 2009

Oil Conservation Division
1220 South St. Francis Dr.
Santa Fe, NM 87505

Submit one copy to appropriate District Office

☐ AMENDED REPORT

I. REQUEST FOR ALLOWABLE AND AUTHORIZATION TO TRANSPORT

¹ Operator name and Address BOPCO, L.P. P O Box 2760 Midland, Tx 79702		² OGRID Number 260737	³ Reason for Filing Code/ Effective Date NW
⁴ API Number 30 - 015-38112	⁵ Pool Name Nash Draw; Delaware/BS (Avalon Sand)		⁶ Pool Code 47545
⁷ Property Code 306402	⁸ Property Name Poker Lake Unit		⁹ Well Number 293 H

II. ¹⁰ Surface Location

UL or lot no. B	Section 21	Township 24S	Range 30E	Lot Idn	Feet from the 810	North/South North Line	Feet from the 1980	East/West line East	County Eddy
--------------------	---------------	-----------------	--------------	---------	----------------------	---------------------------	-----------------------	------------------------	----------------

¹¹ Bottom Hole Location

UL or lot no. N	Section 22	Township 24S	Range 30E	Lot Idn	Feet from the 65	North/South line South	Feet from the 1946	East/West line West	County Eddy
¹² Lse Code F	¹³ Producing Method Code P	¹⁴ Gas Connection Date 07/01/2011	¹⁵ C-129 Permit Number	¹⁶ C-129 Effective Date	¹⁷ C-129 Expiration Date				

III. Oil and Gas Transporters

¹⁸ Transporter OGRID	¹⁹ Transporter Name and Address	²⁰ O/G/W
35246	Shell Trading US Company P O Box 4604 Houston TX 77210-4604	O
241472	Southern Union Gas Services, LTD 301 Commerce Suite 700 Ft. Worth TX 76105	G

IV. Well Completion Data

Lateral 1

²¹ Spud Date 09/01/2010	²² Ready Date 07/01/2011	²³ TD 13,240 Lat 1	²⁴ PBTD	²⁵ Perforations 8,177 - 13,183	²⁶ DHC, MC
²⁷ Hole Size	²⁸ Casing & Tubing Size	²⁹ Depth Set	³⁰ Sacks Cement		
26	20	1,104	3,500		
17 1/2	9 5/8	3,859	325		
8 3/4	7	8,089	460		
6 1/8	4 1/2	7,914 - 13,190 Lat 1			

V. Well Test Data

³¹ Date New Oil 07/03/2011	³² Gas Delivery Date 07/03/2011	³³ Test Date 07/19/2011	³⁴ Test Length 24	³⁵ Tbg. Pressure 300	³⁶ Csg. Pressure 1,100
³⁷ Choke Size W/O	³⁸ Oil 967	³⁹ Water 2,156	⁴⁰ Gas 798	⁴¹ Test Method Pump	

⁴² I hereby certify that the rules of the Oil Conservation Division have been complied with and that the information given above is true and complete to the best of my knowledge and belief.

Signature:

Sandra J. Belt

Printed name:

Sandra J. Belt ext. 149

Title:

Sr. Regulatory Clerk

E-mail Address:

sjbelt@basspet.com

Date:

09/07/2011

Phone:

(432)683-2277

OIL CONSERVATION DIVISION

T. C. Shepard

Geologist

Date:

5/29/2012

Require NSL Approval

DISTRICT I
1625 N. French Dr., Hobbs, NM 88240

DISTRICT II
1501 W. Grand Avenue, Artesia, NM 88210

DISTRICT III
1000 Rio Brazos Rd., Aztec, NM 87410

DISTRICT IV
1220 St. Francis Dr., Santa Fe, NM 87505

State of New Mexico
Energy, Minerals and Natural Resources Department

Form C-102
Revised October 12, 2005

Submit to Appropriate District Office
State Lease - 4 Copies
Fee Lease - 3 Copies

OIL CONSERVATION DIVISION
1220 South St. Francis Dr.
Santa Fe, New Mexico 87505

X AMENDED REPORT

WELL LOCATION AND ACREAGE DEDICATION PLAT

Lateral #1

API Number 30-015-38112	Pool Code 47545	Pool Name Nash Draw Dela, BS, (Avalon Sd)
Property Code 306402	Property Name POKER LAKE UNIT 293	Well Number 293 1H
OGRID No. 260737	Operator Name BOPCO, L.P.	Elevation 3343'

Surface Location

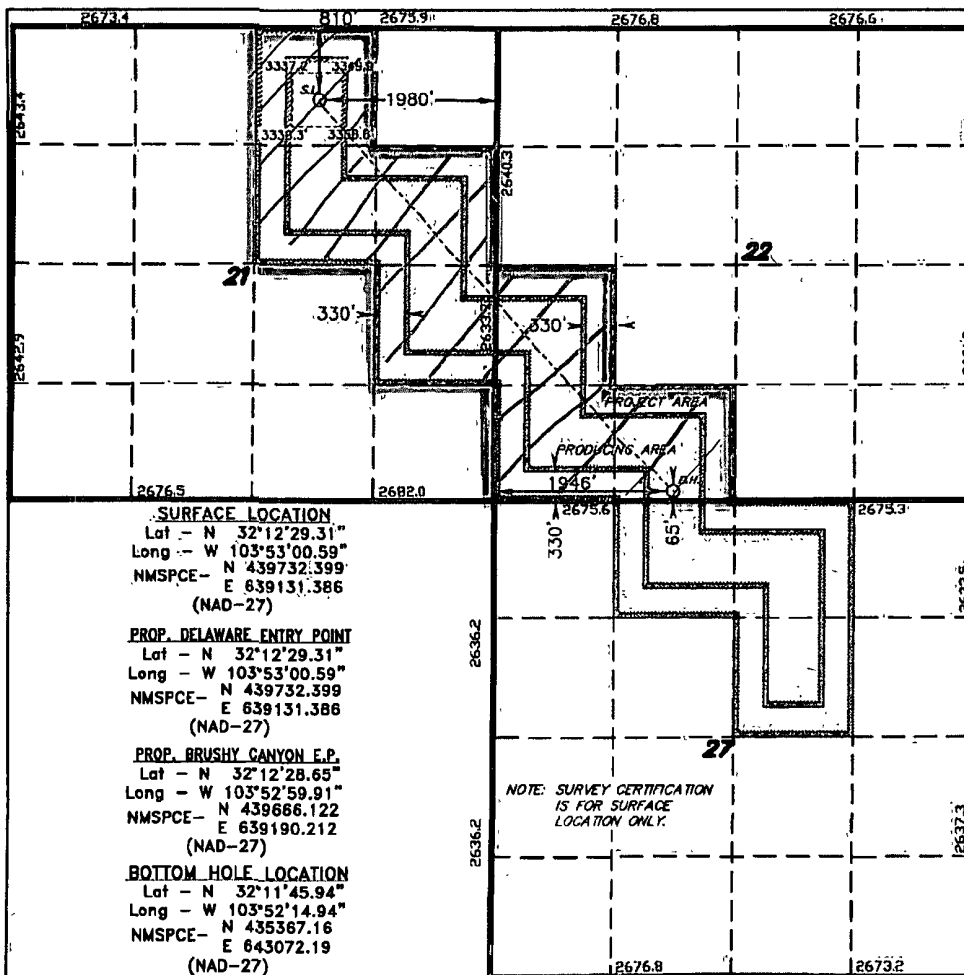
UL or lot No.	Section	Township	Range	Lot Idn	Feet from the	North/South line	Feet from the	East/West line	County
B	21	24 S	30 E		810	NORTH	1980	EAST	EDDY

Bottom Hole Location If Different From Surface

UL or lot No.	Section	Township	Range	Lot Idn	Feet from the	North/South line	Feet from the	East/West line	County
N	22	24 S	30 E		65	SOUTH	1946	WEST	EDDY

Dedicated Acres 280	Joint or Infill	Consolidation Code	Order No.
-------------------------------	-----------------	--------------------	-----------

NO ALLOWABLE WILL BE ASSIGNED TO THIS COMPLETION UNTIL ALL INTERESTS HAVE BEEN CONSOLIDATED
OR A NON-STANDARD UNIT HAS BEEN APPROVED BY THE DIVISION



OPERATOR CERTIFICATION

I hereby certify that the information contained herein is true and complete to the best of my knowledge and belief, and that this organization either owns a working interest or unleased mineral interest in the land including the proposed bottom hole location pursuant to a contract with an owner of such a mineral or working interest, or to a voluntary pooling agreement or a compulsory pooling order heretofore entered by the Division.

Sandra J. Belt 5-30-12
Signature Date

Sandra J. Belt
Printed Name
sjbelt@basspet.com

SURVEYOR CERTIFICATION

I hereby certify that the well location shown on this plat was plotted from field notes of actual surveys made by me or under my supervision, and that the same is true and correct to the best of my belief.

JULY 1 2009
Date Surveyed
GARY L. JONES
Signature
GARY L. JONES
Professional Surveyor
7977

Certificate No. **Gary L. Jones 7977**

BASIN SURVEYS REV 9-2-2010