

ATS-10-337

OCD-ARTESIA

Form 3160-5
(August 2007)

UNITED STATES DEPARTMENT OF
THE INTERIOR BUREAU OF LAND
MANAGEMENT

FORM APPROVED
OMB No 1004-0137
Expires July 31, 2010

SUNDRY NOTICES AND REPORTS ON WELLS
*Do not use this form for proposals to drill or to re-enter an
abandoned well. Use Form 3160-3 (APD) for such proposals.*

5. Lease Serial No
NM-108456
6. If Indian, Allottee or Tribe Name

SUBMIT IN TRIPLICATE - Other instructions on page 2.

1. Type of Well

☒ Oil Well ☐ Gas Well ☐ Other

2. Name of Operator
YATES PETROLEUM CORPORATION

3a. Address
105 South Fourth Street, Artesia, New Mexico 88210

3b. Phone No. (include area code)
(575) 748-1471 ext: 4372

4. Location of Well (Footage, Sec., T., R., M., or Survey Description)
SH. 2310' FSL & 400' FWL, SWNE Lot L, sec 34, T. 20 S., R. 25 E.
BH - 'FNL & 'FEL, NWNE Lot A, sec , T S, R. E.

7. If Unit of CA/Agreement, Name and/or No.

8. Well Name and No.
Kiawah BFQ Federal #1

9. API Well No.
300-30-015-38095

10. Field and Pool or Exploratory Area

Undiscovered oil
North Seven Rivers; Glad-a-Yoso
<97565>

11. Country or Parish, State
Eddy County, New Mexico

12. CHECK THE APPROPRIATE BOX(ES) TO INDICATE NATURE OF NOTICE, REPORT OR OTHER DATA

TYPE OF SUBMISSION	TYPE OF ACTION			
<input checked="" type="checkbox"/> Notice of Intent	<input type="checkbox"/> Acidize	<input type="checkbox"/> Deepen	<input type="checkbox"/> Production (Start/Resume)	<input type="checkbox"/> Water Shut-Off
<input type="checkbox"/> Subsequent Report	<input type="checkbox"/> Alter Casing	<input type="checkbox"/> Fracture Treat	<input type="checkbox"/> Reclamation	<input type="checkbox"/> Well Integrity
<input type="checkbox"/> Final Abandonment Notice	<input type="checkbox"/> Casing Repair	<input type="checkbox"/> New Construction	<input type="checkbox"/> Recomplete	<input checked="" type="checkbox"/> Other Change of Location and drilling plan.
	<input type="checkbox"/> Change Plans	<input type="checkbox"/> Plug and Abandon	<input type="checkbox"/> Temporarily Abandon	
	<input type="checkbox"/> Convert to Injection	<input type="checkbox"/> Plug Back	<input type="checkbox"/> Water Disposal	

13. Describe Proposed or Completed Operation: Clearly state all pertinent details, including estimated starting date of any proposed work and approximate duration thereof. If the proposal is to deepen directionally or recompleat horizontally, give subsurface locations and measured and true vertical depths of all pertinent markers and zones. Attach the Bond under which the work will be performed or provide the Bond No on file with BLM/BIA. Required subsequent reports must be filed within 30 days following completion of the involved operations. If the operation results in a multiple completion or recompleat in a new interval, a Form 3160-4 must be filed once testing has been completed. Final Abandonment Notices must be filed only after all requirements, including reclamation, have been completed and the operator has determined that the site is ready for final inspection.)

Yates Petroleum Corporation has moved the well location for the Kiawah BFQ Federal #1 from 1830' FSL and 660' FWL to 2310' FSL and 400' FWL.

Because of this move it was necessary to change the down hole drilling prognosis also.

Attached please find new surface information along with a new drilling prognosis and revised exhibits.

Please note this APD was originally submitted to and approved by the Carlsbad Field Office on August 19, 2010 for a period of two years. This application is still valid and will expire on August 19, 2012.

We would very much appreciate a prompt concurrence and approval from your office as we have a drilling rig on date of 5/31/12.

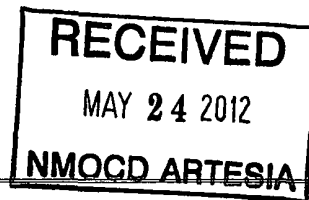
Thank You.

Accepted for record

NMOCD

TES
5/25/2012

**SEE ATTACHED FOR
CONDITIONS OF APPROVAL**



14. I hereby certify that the foregoing is true and correct

Name (Printed/Typed)
Cy Cowan

Title Land Regulatory Agent

Signature:

Date:

5/4/12

THIS SPACE FOR FEDERAL OR STATE OFFICE USE

Approved by:

/s/ Don Peterson

Conditions of approval, if any, are attached. Approval of this notice does not warrant or certify that the applicant holds legal or equitable title to those rights in the subject lease which would entitle the applicant to conduct operations thereon.

Title
Office

Date: MAY 18 2012

CARLSBAD FIELD OFFICE

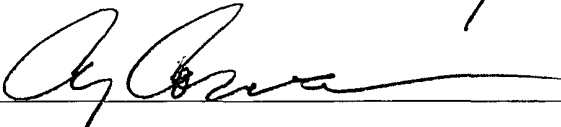
Title 18 U.S.C. Section 1001 and Title 43 U.S.C. Section 1212, make it a crime for any person knowingly and willfully to make to any department or agency of the United States any false, fictitious or fraudulent statements or representations as to any matter within its jurisdiction

(Instructions on page 2)

CERTIFICATION
YATES PETROLEUM CORPORATION
Kiawah BFQ Federal #1

I hereby certify that I, or someone under my direct supervision, have inspected the drill site and access route proposed herein; that I am familiar with the conditions which currently exist; and an someone under employment of Yates Petroleum Corporation has full knowledge of state and federal laws applicable to this operation; that the statements made in this APD package are, to the best of my knowledge, true and correct; and that the work associated with the operations proposed herein will be performed in conformity with this APD package and the terms and conditions under which it is approved. I also certify that I, or the company I represent, am responsible for the operations conducted under this application. These statements are subject to the provisions of 18 U.S.C. 1001 for the filing of false statements.

Executed this 4th day of May 2012

Signature 

Name Cy Cowan

Position Title Land Regulatory Agent

Address 105 South Fourth Street, Artesia, New Mexico 88210

Telephone (505) 748-4372

Field Representative (if not above signatory) Tim Bussell, Drilling Supervisor

Address (if different from above) Same as above.

Telephone (if different from above) (505) 748-4221

E-mail (optional) _____

DISTRICT I

625 N. French Dr., Hobbs, NM 88240
Phone (575) 393-8181 Fax: (575) 393-0720

DISTRICT II

1301 W. Grand Avenue, Artesia, NM 88210
Phone (575) 748-1283 Fax: (575) 748-9720

DISTRICT III

1000 Rio Brazos Rd., Aztec, NM 87410
Phone (505) 334-6178 Fax: (505) 334-0170

DISTRICT IV

1220 S. St. Francis Dr., Santa Fe, NM 87505
Phone (505) 476-3460 Fax: (505) 476-3462

State of New Mexico
Energy, Minerals and Natural Resources Department

OIL CONSERVATION DIVISION

1220 South St. Francis Dr.
Santa Fe, New Mexico 87505

Form C-102

Revised August 1, 2011

Submit one copy to appropriate
District Office

WELL LOCATION AND ACREAGE DEDICATION PLAT

☐ AMENDED REPORT

API Number 30-015-38095	Pool Code 97565	Pool Name Undesignated Vaso
Property Code 34764	Property KIAWAH BFQ FEDERAL	Well Number 1
OGRID No. 025575	Operator Name YATES PETROLEUM CORP.	Elevation 3677'

Surface Location

UL or lot No.	Section	Township	Range	Lot Idn	Feet from the	North/South line	Feet from the	East/West line	County
L	34	20 S	25 E		2310	SOUTH	400	WEST	EDDY

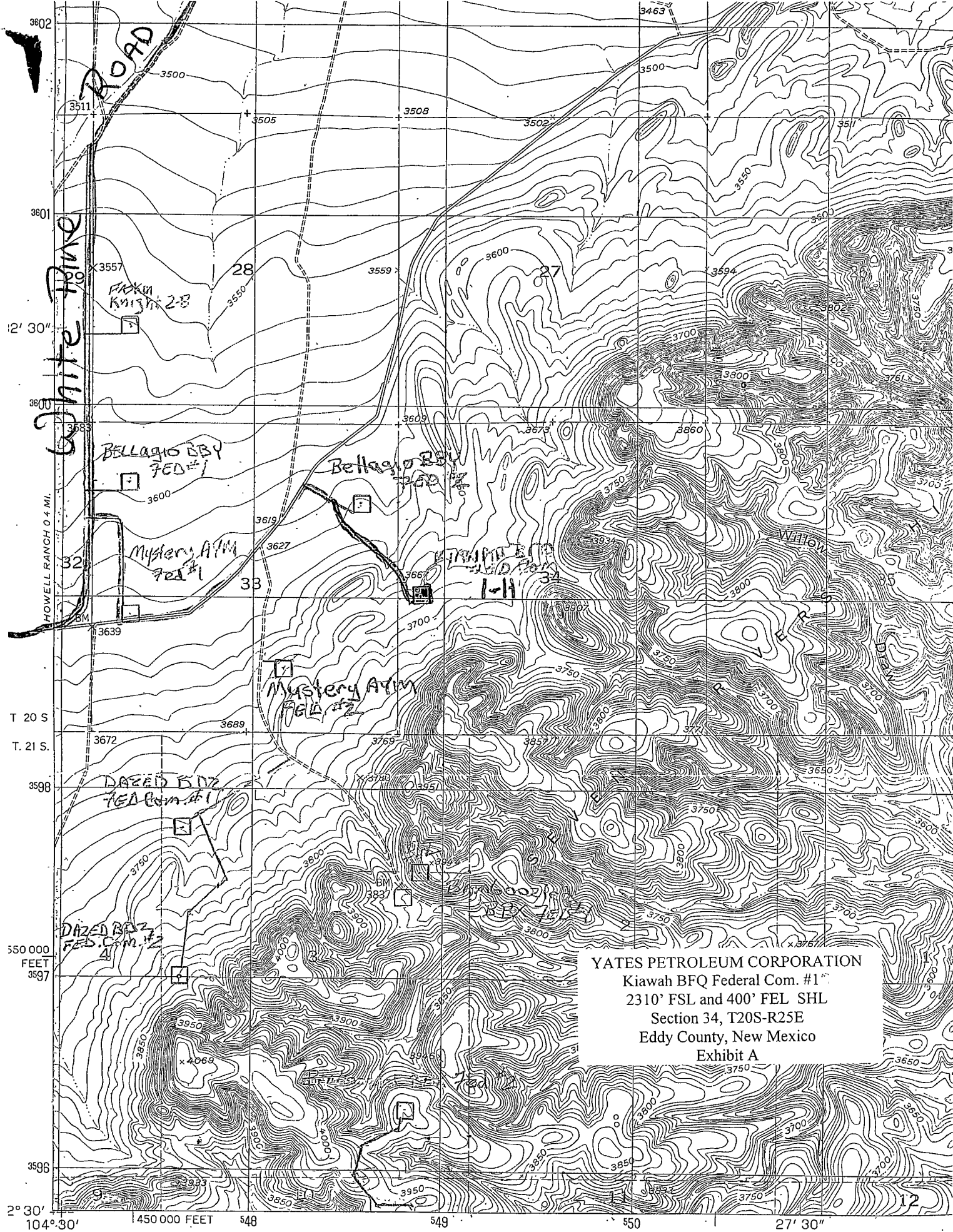
Bottom Hole Location If Different From Surface

UL or lot No.	Section	Township	Range	Lot Idn	Feet from the	North/South line	Feet from the	East/West line	County

Dedicated Acres	Joint or Infill	Consolidation Code	Order No.
40			

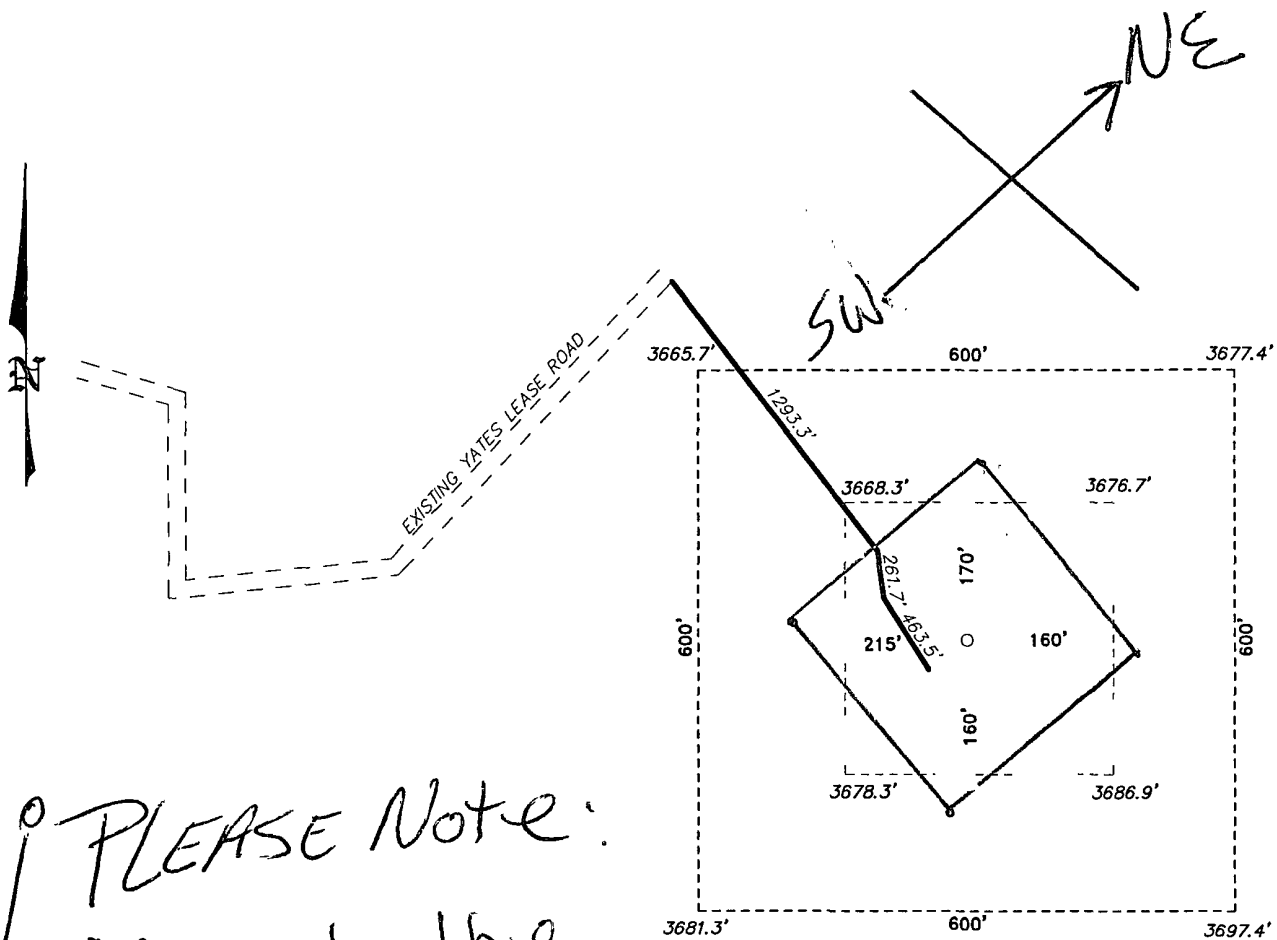
NO ALLOWABLE WILL BE ASSIGNED TO THIS COMPLETION UNTIL ALL INTERESTS HAVE BEEN CONSOLIDATED
OR A NON-STANDARD UNIT HAS BEEN APPROVED BY THE DIVISION

<p>SURFACE LOCATION Lat - N 32°31'44.32" Long - W 104°28'47.41" NMSPCE- N 556203.791 E 496186.325 (NAD-83)</p>	<p>OPERATOR CERTIFICATION</p> <p>I hereby certify that the information contained herein is true and complete to the best of my knowledge and belief, and that this organization either owns a working interest or unleased mineral interest in the land including the proposed bottom hole location or has a right to drill this well at this location pursuant to a contract with an owner of such a mineral or working interest, or to a voluntary pooling agreement or a compulsory pooling order heretofore entered by the division.</p> <p><i>Cy Cowan</i> 5/4/12 Signature Date</p> <p>Cy Cowan Printed Name</p> <p>_____ Email Address</p>
	<p>SURVEYOR CERTIFICATION</p> <p>I hereby certify that the well location shown on this plat was plotted from field notes of actual surveys made by me or under my supervision, and that the same is true and correct to the best of my belief.</p> <p>JANUARY 11, 2012 Date Surveyed</p> <p><i>Gary L. Jones</i> Signature & Seal of Professional Surveyor</p> <p>_____ W.L. Jones 10899</p>
	<p>Certificate No. Gary L. Jones 7977</p>
	<p>BASIN SURVEYS 25987</p>



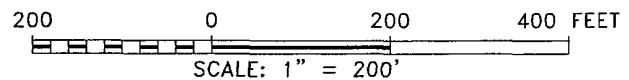
YATES PETROLEUM CORPORATION
Kiawah BFQ Federal Com. #1
2310' FSL and 400' FEL SHL
Section 34, T20S-R25E
Eddy County, New Mexico
Exhibit A

SECTION 34, TOWNSHIP 20 SOUTH, RANGE 25 EAST, N.M.P.M.,
EDDY COUNTY, NEW MEXICO.



YATES PETROLEUM CORP
KIAWAH BFQ FED COM #1-H
ELEV. - 3677'

Lat - N 32°31'44.32"
Long - W 104°28'47.41"
NAD83 - N 556203.791
E 496186.325
(NAD-83)



YATES PETROLEUM CORP.

REF: KIAWAH BFQ FED COM #1-H

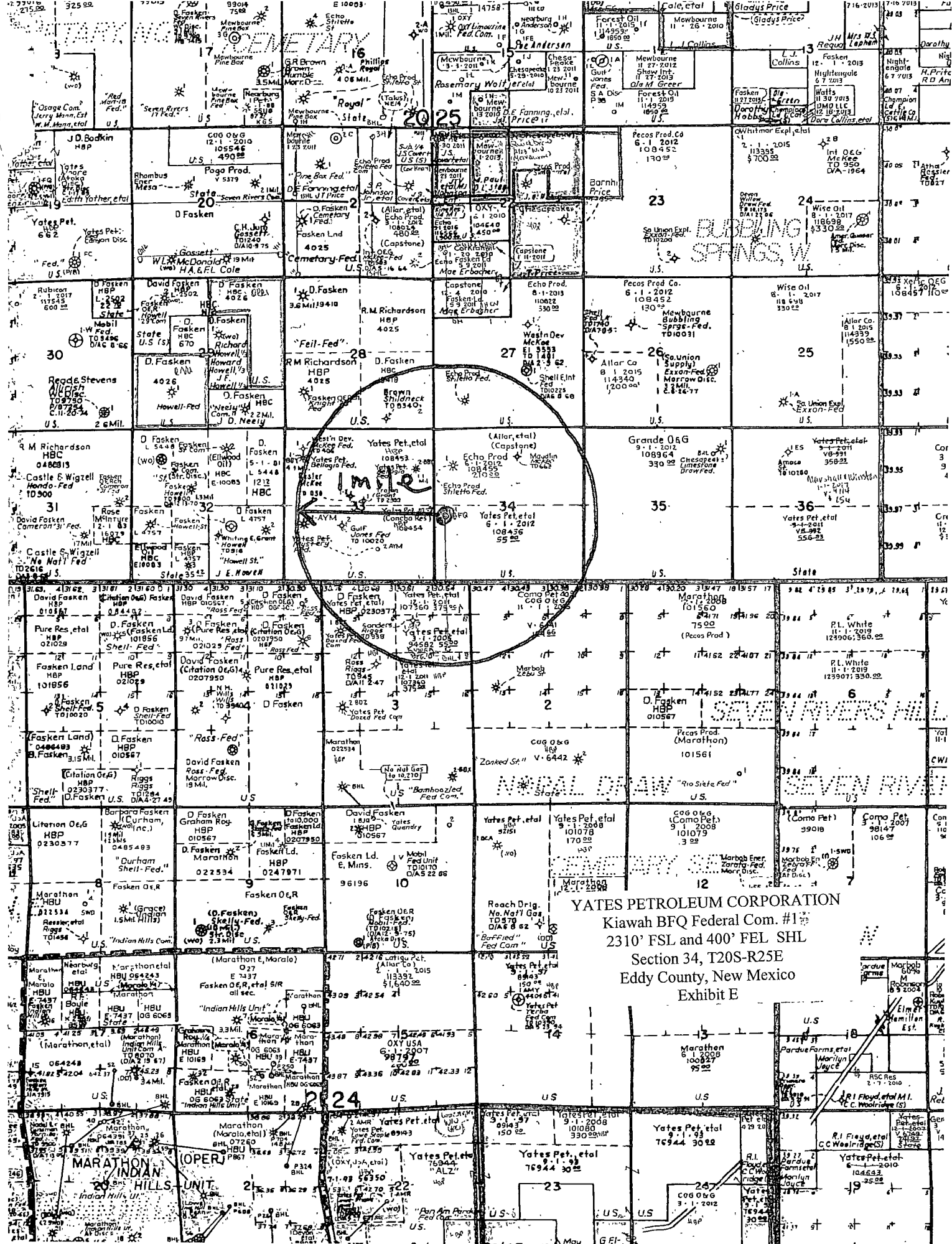
THE KIAWAH BFQ FED COM #1 IS LOCATED 2310'
FROM THE SOUTH LINE AND 400' FROM THE WEST LINE OF
SECTION 34, TOWNSHIP 20 SOUTH, RANGE 25 EAST,
N.M.P.M., EDDY COUNTY, NEW MEXICO.

BASIN SURVEYS P.O. BOX 1786—HOBBS, NEW MEXICO

W.O. Number: 25987

Date: 1-11-2012

Sheet 1 of 1 Sheets



YATES PETROLEUM CORPORATION

Kiawah BFQ Federal #1

2310' FSL and 660' FWL

Section 34, T20S-R25E

Eddy County, New Mexico

1. The estimated tops of geologic markers are as follows:

San Andres	925'
Glorietta	2650'
Yeso	2770'
TD	3600'

2. The estimated depths at which anticipated water, oil or gas formations are expected to be encountered:

Water: 312'

Oil or Gas: San Andres, Glorietta, Yeso.

3. Pressure Control Equipment: 3000 PSI BOPE with a 13.625" opening will be installed on the 13 3/8" casing and the 9 5/8" casing. The BOP and related BOPE shall comply with well control requirements as described in Onshore Oil and Gas Order No. 2 and API RP 53 Sec. 17. Pressure tests to 3000 PSI and held for 30 minutes will be conducted before drilling out from under all casing strings, which are set and cemented in place. Blowout Preventer controls will be installed prior to drilling the surface plug and will remain in use until the well is completed or abandoned. Preventers will be inspected and operated at least daily to ensure good mechanical working order, and this inspection recorded on the daily drilling report. See Exhibit B.

Auxiliary Equipment:

- A. Auxiliary Equipment: Kelly cock, pit level indicators, flow sensor equipment and a sub with full opening valve to fit the drill pipe and collars will be available on the rig floor in the open position at all times for use when kelly is not in use.

4. THE PROPOSED CASING AND CEMENTING PROGRAM:

A. Casing Program: (All New)

<u>Hole Size</u>	<u>Casing Size</u>	<u>Wt./Ft</u>	<u>Grade</u>	<u>Thread</u>	<u>Interval</u>	<u>Length</u>
14 3/4"	9 5/8"	36#	J-55 or K-55	LT+C	0-800'	800'
8 3/4"	7"	26#	J-55 or K-55	LT&C	0-3600'	3600'

B. CEMENTING PROGRAM:

Surface casing: Lead in with 410 sx 35:65:6 PzC (YLD 2.0 WT 12.5). Tail in with 200 sx Class C + 2% CaCl₂ (YLD 1.34 WT 14.8). Excess cement 100%. TOC surface.

Production Casing: Lead in with 150 sx PozC 35:65:6 (YLD 2.0 WT 12.5). Tail in with 300 sx of Pecos ViLt (YLD 1.41 WT 13.0) 30% CaCO₃, 3.2% Expansion Additive, Anti-foam, 0.8% Retarder, 15% Fluid Loss. TOC is surface. Excess cement 30%.

Minimum Casing Design Factors: Collapse 1.125, Burst 1.0, Tensile Strength 1.8%

5. Mud Program and Auxiliary Equipment:

<u>Interval</u>	<u>Type</u>	<u>Weight</u>	<u>Viscosity</u>	<u>Fluid Loss</u>
Spud to 800'	FW/Spud Mud	8.6-92	28-32	N/C
800'-3600'	Fresh Water	8.6-9.2	28-32	N/C

Sufficient mud material(s) to maintain mud properties, control lost circulation and contain a blow out will be available at the well site during drilling operations. Mud will be checked hourly by rig personnel.

6. EVALUATION PROGRAM:

Samples: 10' out from under intermediate casing to TD.
 Logging: Platform Express/CNL/LDT/NGT TD- Surface Casing.
 CNL/GR TD-Surface.
 DLL-MSFL TD-Surface.
 Coring: None anticipated.
 DST's: No anticipated.

**7. Abnormal Conditions, Bottom hole pressure and potential hazards:
 Anticipated BHP:**

From: 0 TO 800'	Anticipated Max. BHP: 383	PSI
From: 800' TO 3600'	Anticipated Max. BHP: 11722	PSI

Abnormal Pressures Anticipated: None

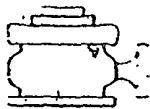
Lost Circulation Zones Anticipated: None

H2S Zones Anticipated: Yes.

Maximum Bottom Hole Temperature: 189° F

8. ANTICIPATED STARTING DATE:

Plans are to drill this well as soon as possible after receiving approval. It should take approximately 30 days to drill the well with completion taking another 15 days.

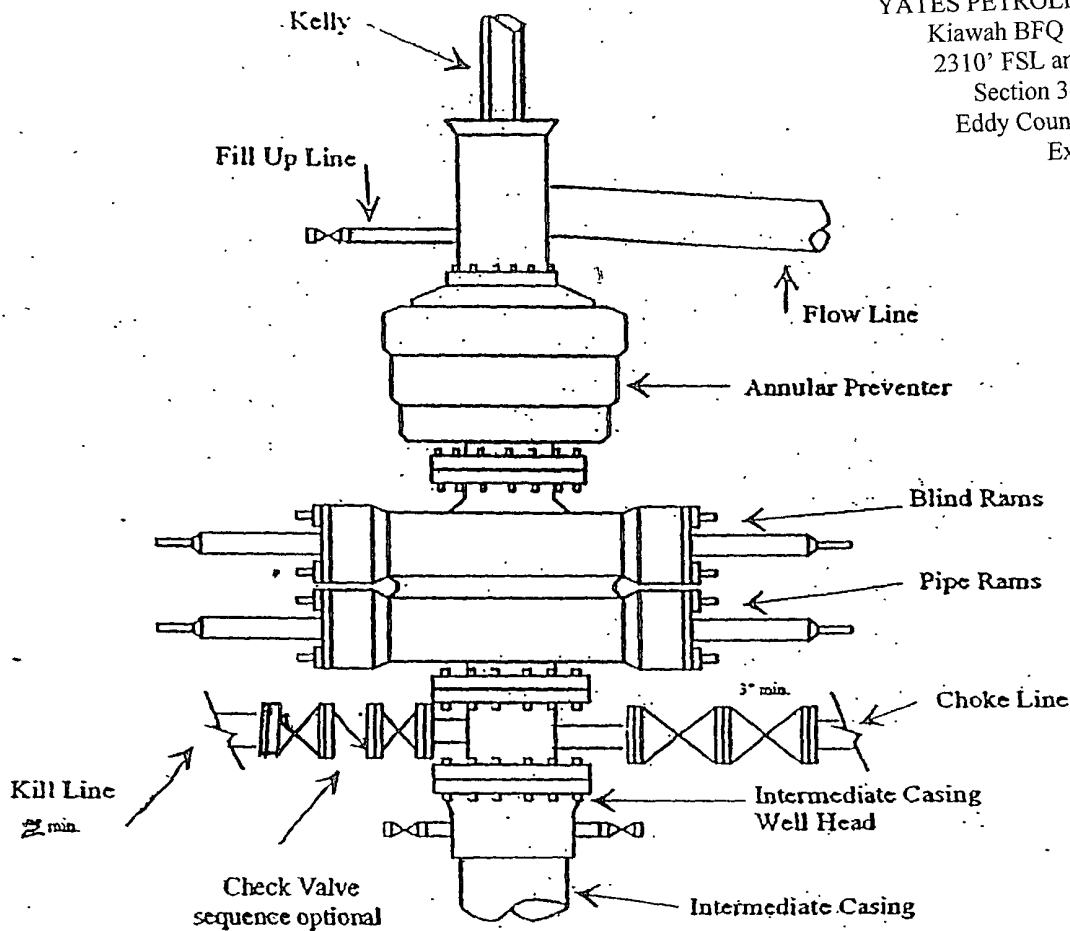


Yates Petroleum Corporation

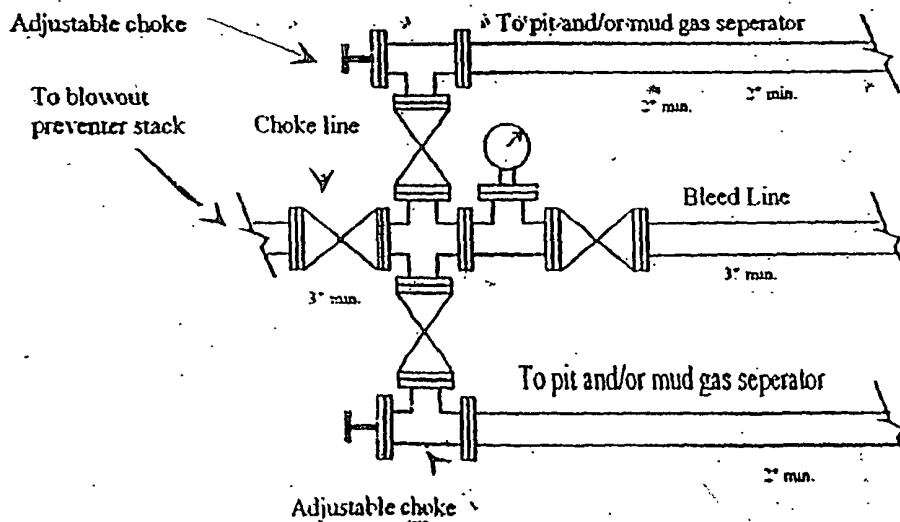
BOP-3

Typical 3,000 psi Pressure System Schematic Annular with Double Ram Preventer Stack

YATES PETROLEUM CORPORATION
Kiawah BFQ Federal Com. #17
2310' FSL and 400' FEL SHL
Section 34, T20S-R25E
Eddy County, New Mexico
Exhibit C



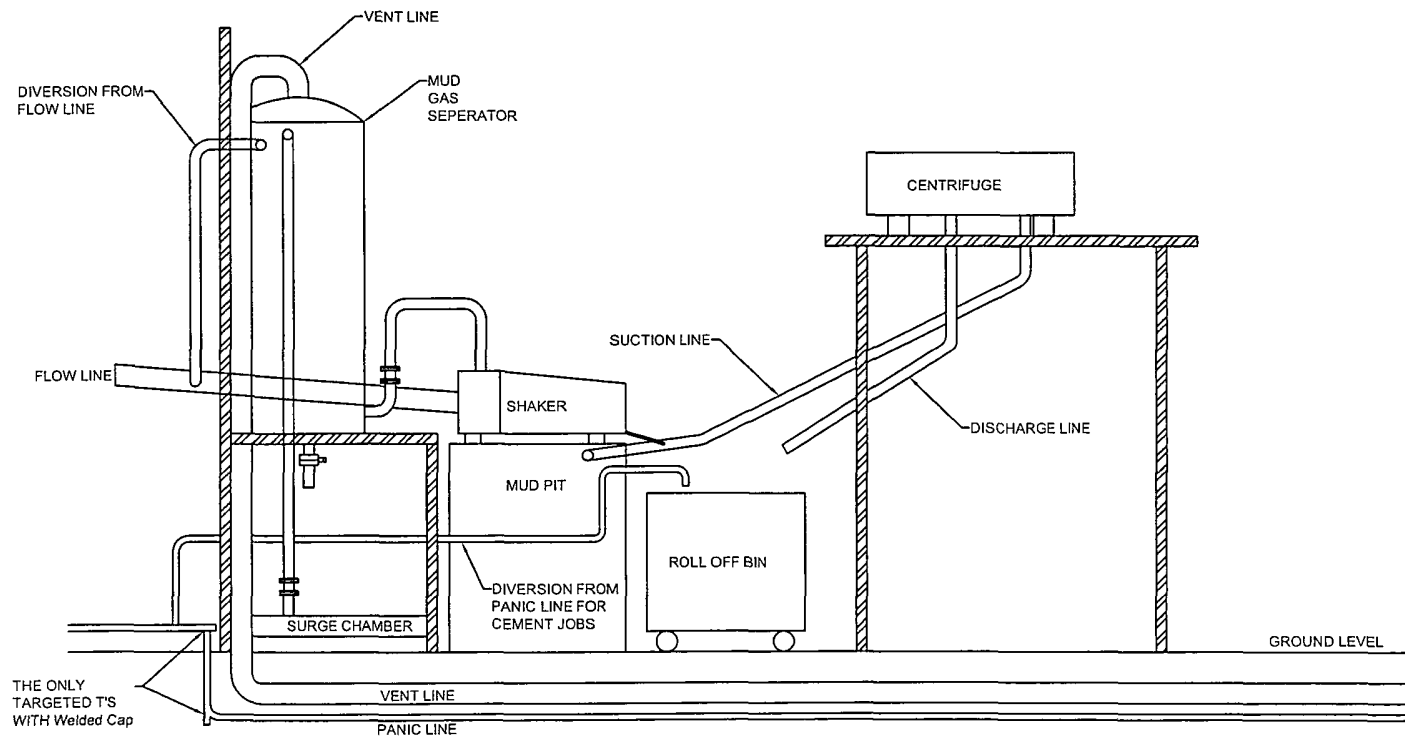
Typical 3,000 psi choke manifold assembly with at least these minimum features



YATES PETROLEUM CORPORATION
Kiawah BFQ Federal Com. #13
2310' FSL and 400' FEL SHL
Section 34, T20S-R25E
Eddy County, New Mexico
Exhibit D

YATES PETROLEUM CORPORATION

Piping from Choke Manifold
to the Closed Loop Drilling Mud System



The flare discharge must be 100' from wellhead for non H2S wells and 150' from wellhead for wells expected to encounter H2S.

**Yates Petroleum Corporation
105 S. Fourth Street
Artesia, NM 88210**

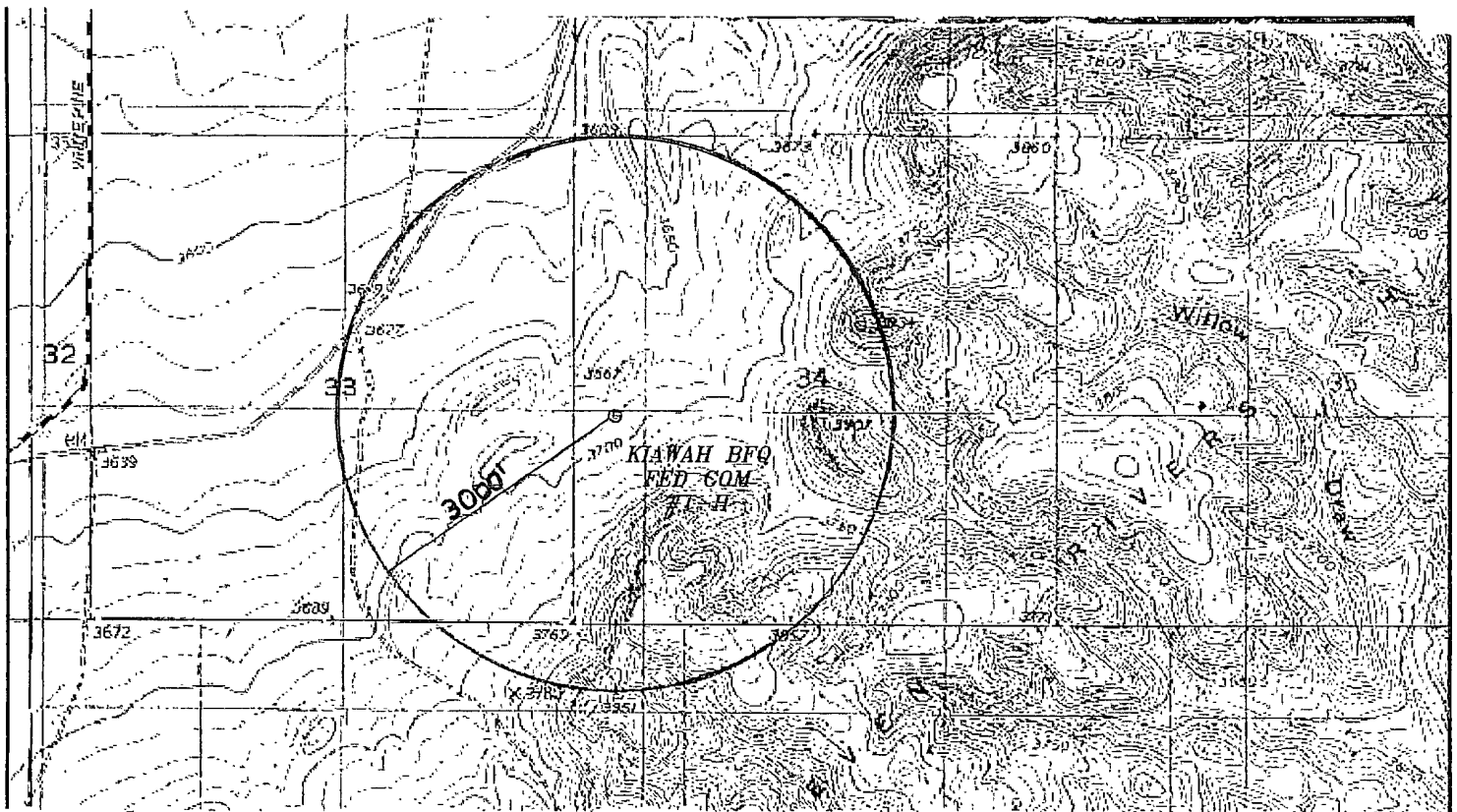
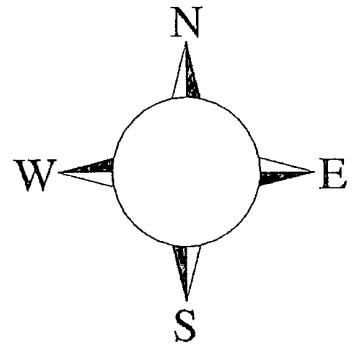
Hydrogen Sulfide (H₂S) Contingency Plan

For

**Kiawah BFQ Federal Com #1
2310' FSL & 400' FWL
Section 34, T20S-R25E
Eddy County NM**

Kiawah BFQ Federal Com. #1

This is an open drilling site. H₂S monitoring equipment and emergency response equipment will be used within 500' of zones known to contain H₂S, including warning signs, wind indicators and H₂S monitor.



Assumed 100 ppm ROE = 3000'

100 ppm H₂S concentration shall trigger activation of this plan.

Emergency Procedures

In the case of a release of gas containing H₂S, the first responder(s) must isolate the area and prevent entry by other persons into the 100 ppm ROE. Additionally the first responder(s) must evacuate any public places encompassed by the 100 ppm ROE. First responder(s) must take care not to injure themselves during this operation. Company and/or local officials must be contacted to aid in this operation. Evacuation of the public should be beyond the 100 ppm ROE.

All responders must have training in the detection of H₂S, measures for protection against the gas, equipment used for protection and emergency response. Additionally, responders must be equipped with H₂S monitors and air packs in order to control the release. Use the “buddy system” to ensure no injuries during the response.

Ignition of Gas Source

Should control of the well be considered lost and ignition considered, take care to protect against exposure to Sulfur Dioxide (SO₂). Intentional ignition must be coordinated with the NMOCD and local officials. Additionally the NM State Police may become involved. NM State Police shall be the Incident Command on scene of any major release. Take care to protect downwind whenever there is an ignition of the gas

Characteristics of H₂S and SO₂

Common Name	Chemical Formula	Specific Gravity	Threshold Limit	Hazardous Limit	Lethal Concentration
Hydrogen Sulfide	H ₂ S	1.189 Air = 1	10 ppm	100 ppm/hr	600 ppm
Sulfur Dioxide	SO ₂	2.21 Air = 1	2 ppm	N/A	1000 ppm

Contacting Authorities

YPC personnel must liaison with local and state agencies to ensure a proper response to a major release. Additionally, the OCD must be notified of the release as soon as possible but no later than 4 hours. Agencies will ask for information such as type and volume of release, wind direction, location of release, etc. Be prepared with all information available. The following call list of essential and potential responders has been prepared for use during a release. YPC Company response must be in coordination with the State of New Mexico’s ‘Hazardous Materials Emergency Response Plan’ (HMER)

Yates Petroleum Corporation Phone Numbers

YPC Office	(575) 748-1471
Wade Bennett/Prod Superintendent	(575) 748-4236
LeeRoy Richards/Assistant Prod Superintendent	(575) 748-4228
Mike Larkin/Drilling	(575) 748-4222
Paul Hanes/Prod. Foreman/Roswell	(575) 624-2805
Tim Bussell/Drilling Superintendent	(575) 748-4221
Artesia Answering Service	(575) 748-4302
(During non-office hours)	

Agency Call List

Eddy County (575)

Artesia

State Police	746-2703
City Police.....	746-2703
Sheriff's Office	746-9888
Ambulance.....	911
Fire Department	746-2701
LEPC (Local Emergency Planning Committee)	746-2122
NMOCD.....	748-1283

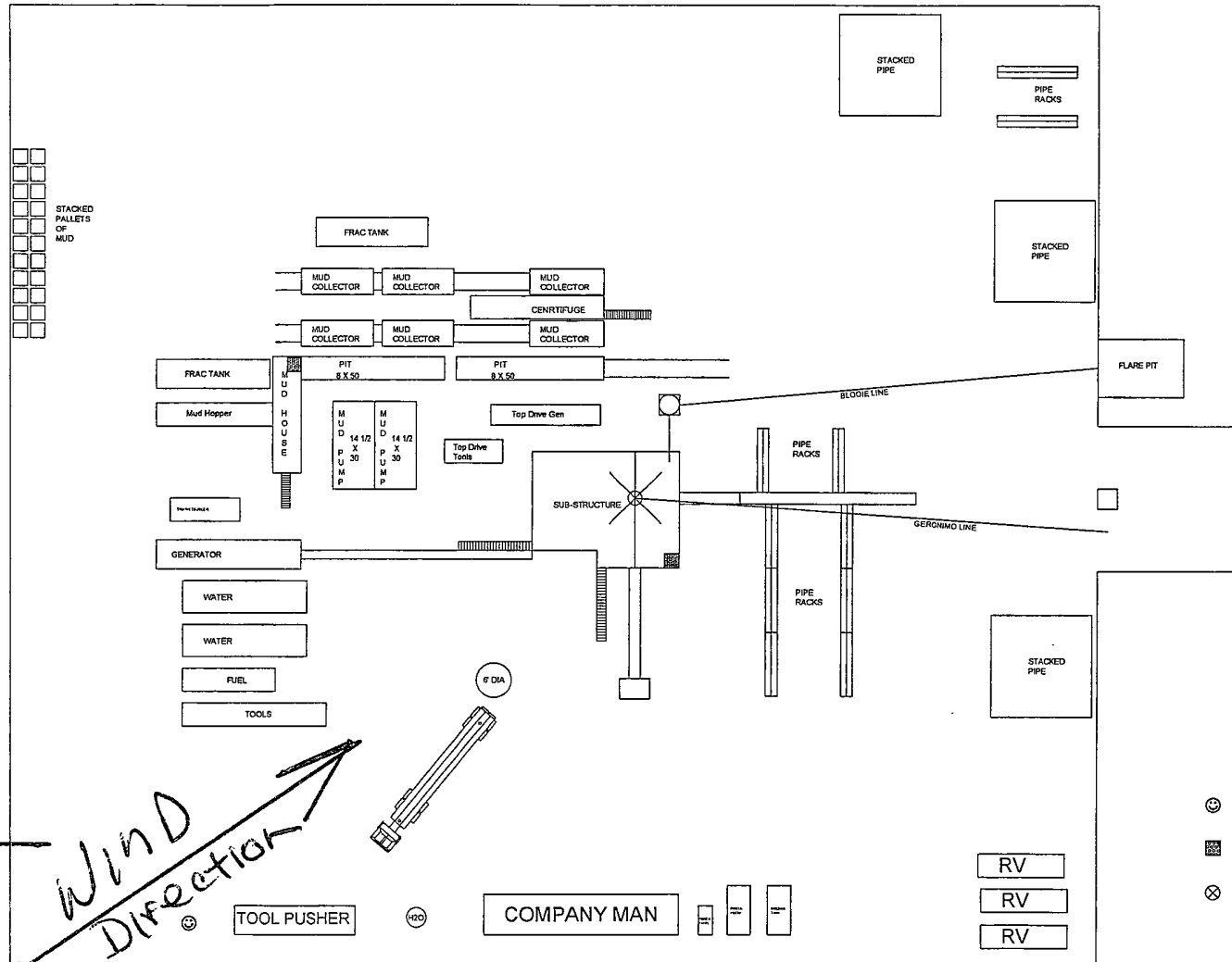
Carlsbad

State Police	885-3137
City Police.....	885-2111
Sheriff's Office.....	887-7551
Ambulance	911
Fire Department	885-2111
LEPC (Local Emergency Planning Committee).....	887-3798
US Bureau of Land Management.....	887-6544
New Mexico Emergency Response Commission (Santa Fe)	(505)476-9600
24 HR	(505) 827-9126
New Mexico State Emergency Operations Center.....	(505) 476-9635
National Emergency Response Center (Washington, DC)(800) 424-8802

Other

Boots & Coots IWC	1-800-256-9688 or (281) 931-8884
Cudd Pressure Control.....	(915) 699-0139 or (915) 563-3356
Halliburton	(575) 746-2757
B. J. Services.....	(575) 746-3569
Flight For Life -4000 24th St, Lubbock, TX	(806) 743-9911
Aerocare -Rr 3 Box 49f, Lubbock, TX	(806) 747-8923
Med Flight Air Amb 2301 Yale Blvd SE #D3, Albuq, NM	(505) 842-4433
S B Air Med Svc 2505 Clark Carr Loop SE, Albuq, NM	(505) 842-4949

YATES PETROLEUM CORPORATION



- ☺ Safe Briefing Area with caution signs and breathing equipment
- ☒ Wind Direction Indicators
- ⊗ H2S Monitor with alarm at the bell nipple

PAD LAYOUT

Scale: 1 inch = 60 feet

Yates Petroleum Corporation

Hydrogen Sulfide Drilling Operation Plan

I. HYDROGEN SULFIDE TRAINING

All personnel, whether regularly assigned, contracted, or employed on an unscheduled basis, will receive training from a qualified instructor in the following areas prior to commencing drilling operations on this well:

1. The hazards and characteristics of hydrogen sulfide (H₂S).
2. The proper use and maintenance of personal protective equipment and life support systems.
3. The proper use of H₂S detectors, alarms, warning systems, briefing areas, evacuation procedures, and prevailing winds.
4. The proper techniques for first aid and rescue procedures.

In addition, supervisory personnel will be trained in the following areas:

1. The effects of H₂S on metal components. If high tensile tubular are to be used, personnel will be trained in their special maintenance requirements.
2. Corrective action and shut-in procedures when drilling or reworking a well and blowout prevention and well control procedures.
3. The contents and requirements of the H₂S Drilling Operations Plan and H₂S Contingency Plan.

There will be an initial training session just prior to encountering a known or probable H₂S zone (within 3 days or 500 feet) and weekly H₂S and well control drills for all personnel in each crew. The initial training session shall include a review of the site specific H₂S Drilling Operation Plan and the H₂S Contingency Plan. **The location of this well does not require a Public Protection Plan.**

II. H2S SAFETY EQUIPMENT AND SYSTEMS

NOTE: All H2S safety equipment and systems will be installed, tested, and operational when drilling reaches a depth of 500 feet above, or three days prior to penetrating the first zone containing or reasonably expected to contain H2S.

1. Well Control Equipment:

- A. Flare line
- B. Choke manifold
- C. Blind rams and pipe rams to accommodate all pipe sizes with properly sized closing unit
- D. Auxiliary equipment may include if applicable: annular preventer & rotating head.

2. Protective equipment for essential personnel:

- A. Mark II Survive Air (or equivalent) 30-minute units located in the doghouse and at briefing areas, as indicated on well site diagram.

3. H2S detection and monitoring equipment:

- A. 3 portable H2S monitors positioned at: Shale Shaker, Bell Nipple, and Rig Floor. These units have warning lights and audible sirens when H2S levels of 10 PPM are reached.

4. Visual warning systems:

- A. Wind direction indicators as shown on well site diagram (attached).
- B. Caution/Danger signs (attached) shall be posted on roads providing direct access to location. Signs will be painted with high visibility yellow with black lettering of a sufficient size to be readable at a reasonable distance from the immediate location. Bilingual signs will be used, when appropriate. See example attached.

5. Mud program:

- A. The mud program has been designed to minimize the volume of H2S circulated to the surface. Proper mud weight, safe drilling practices and the use of H2S scavengers will minimize hazards when penetrating H2S bearing zones.

6. Metallurgy:

- A. All drill strings, casings, tubing, wellhead, blowout preventer, drilling spool, kill lines, choke manifold and lines, and valves shall be suitable for H2S service.
- B. All elastomers used for packing and seals shall be H2S trim.

7. Communication:

- A. Cellular communications in company vehicles.
- B. Land line (telephone) communication at the Office.

8. Well testing:

- A. There will be no drill stem testing.

EXHIBIT

DANGER

POISONS GAS

HYDROGEN SULFIDE

NORMAL OPERATIONS
(GREEN)

CAUTION POTENTIAL DANGER
(YELLOW)

DANGER POISONS GAS ENCOUNTERED
(RED) **AUTHORIZED PERSONAL ONLY.**
LOCATION SECURED.

1-575-746-1096
1-877-879-8899

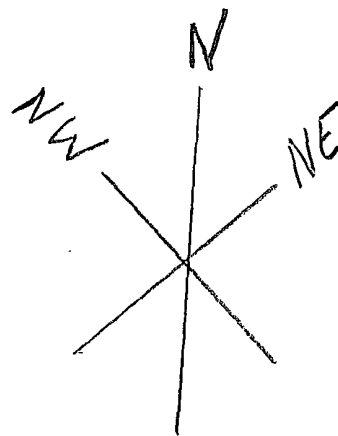
EDDY COUNTY EMERGENCY NUMBERS

ARTESIA FIRE DEPT. 575-746-5050
ARTESIA POLICE DEPT. 575-746-5000
EDDY CO. SHERIFF DEPT. 575-746-9888

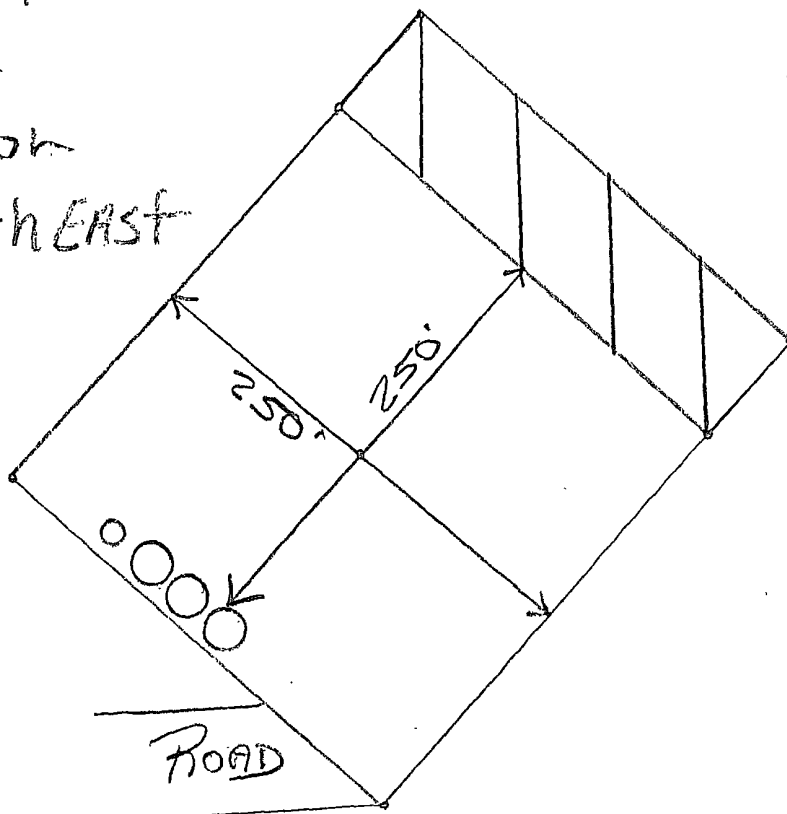
LEA COUNTY EMERGENCY NUMBERS

HOBBS FIRE DEPT. 575-397-9308
HOBBS POLICE DEPT. 575-397-9285
LEA CO. SHERIFF DEPT. 575-396-1196

YATES PETROLEUM CORPORATION
Kiawah BFQ Federal Com. #1P
2310' FSL and 400' FEL SHL
Section 34, T20S-R25E
Eddy County, New Mexico
RECLAMATION PLAT

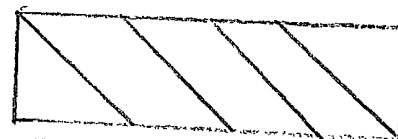


PLEASE Note:
V-Door for
This Location
To The Northeast



Not To SCALE

Final Reclamation
may not look like
this PLAT.



Possible
Reclaimed
AREA.

PECOS DISTRICT CONDITIONS OF APPROVAL

OPERATOR'S NAME:	Yates Petroleum Corporation
LEASE NO.:	NM
WELL NAME & NO.:	Kiawah BFQ Federal # 1
SURFACE HOLE FOOTAGE:	2310' FSL & 400' FWL
BOTTOM HOLE FOOTAGE:	None
LOCATION:	Section 34, T. 20 S., R. 25 E., NMPM
COUNTY:	Eddy County, New Mexico

TABLE OF CONTENTS

Standard Conditions of Approval (COA) apply to this APD. If any deviations to these standards exist or special COAs are required, the section with the deviation or requirement will be checked below.

- ☐ **General Provisions**
- ☐ **Permit Expiration**
- ☐ **Archaeology, Paleontology, and Historical Sites**
- ☐ **Noxious Weeds**
- ☒ **Special Requirements**
 - Cave/Karst
 - VRM
- ☒ **Construction**
 - Notification
 - Topsoil
 - Closed Loop System
 - Federal Mineral Material Pits
 - Well Pads
 - Roads
- ☒ **Road Section Diagram**
- ☒ **Drilling**
 - High Cave/Karst
 - Logging Requirements
 - Waste Material and Fluids
- ☒ **Production (Post Drilling)**
 - Well Structures & Facilities
- ☒ **Interim Reclamation**
- ☒ **Final Abandonment & Reclamation**