

DISTRICT I  
1626 N. French Dr., Hobbs, NM 88240

DISTRICT II  
1301 W. Grand Avenue, Artesia, NM 88210

DISTRICT III  
1000 Rio Brazos Rd., Aztec, NM 87410

DISTRICT IV  
1220 S. St. Francis Dr., Santa Fe, NM 87505

State of New Mexico  
Energy, Minerals and Natural Resources Department

OIL CONSERVATION DIVISION  
1220 South St. Francis Dr.  
Santa Fe, New Mexico 87505

RECEIVED Form C-102  
Revised October 12, 2005  
AUG 28 2012  
Submit to Appropriate District Office  
State Lease - 4 Copies  
Fee Lease - 3 Copies  
NMOCD ARTESIA

WELL LOCATION AND ACREAGE DEDICATION PLAT

☐ AMENDED REPORT

API Number 30-015-37066-37606	Pool Code 76140 81600	Pool Name NASH DRAW Dublin Ranch, Morrow (gas)
Property Code 37878	Property Name LONGVIEW "6"	Well Number 41
UGRID No. 246289	Operator Name RKI EXPLORATION & PRODUCTION LLC	Elevation 3041'

Surface Location

UL or lot No.	Section	Township	Range	Lot Idn	Feet from the	North/South line	Feet from the	East/West line	County
LOT 7	6	23 S	29 E		1140	SOUTH	840	WEST	EDDY

Bottom Hole Location If Different From Surface

UL or lot No.	Section	Township	Range	Lot Idn	Feet from the	North/South line	Feet from the	East/West line	County
Dedicated Acres 320	Joint or Infill	Consolidation Code	Order No.						

NO ALLOWABLE WILL BE ASSIGNED TO THIS COMPLETION UNTIL ALL INTERESTS HAVE BEEN CONSOLIDATED  
OR A NON-STANDARD UNIT HAS BEEN APPROVED BY THE DIVISION

LOT 4	LOT 3	LOT 2	LOT 1
LOT 5	<b>DENIED</b> Refile w/corrections noted. Designate 320 acres to be included in spacing unit.		
LOT 6			
LOT 7	<p>SURFACE LOCATION Lat - N 32°19'49.97" Long - W 104°01'45.38" NMSPCE - N 484118.6 E 635253.2 (NAD-83)</p>		

OPERATOR CERTIFICATION

I hereby certify that the information contained herein is true and complete to the best of my knowledge and belief, and that this organization either owns a working interest or unleased mineral interest in the land including the proposed bottom hole location pursuant to a contract with an owner of such a mineral or working interest, or to a voluntary pooling agreement or a compulsory pooling order heretofore entered by the division.

*Charles K. Ahn* 8/24/2012  
Signature Date

Charles K. Ahn  
Printed Name

SURVEYOR CERTIFICATION

I hereby certify that the well location shown on this plat was plotted from field notes of actual surveys made by me or under my supervision and that the same is true and correct to the best of my belief.

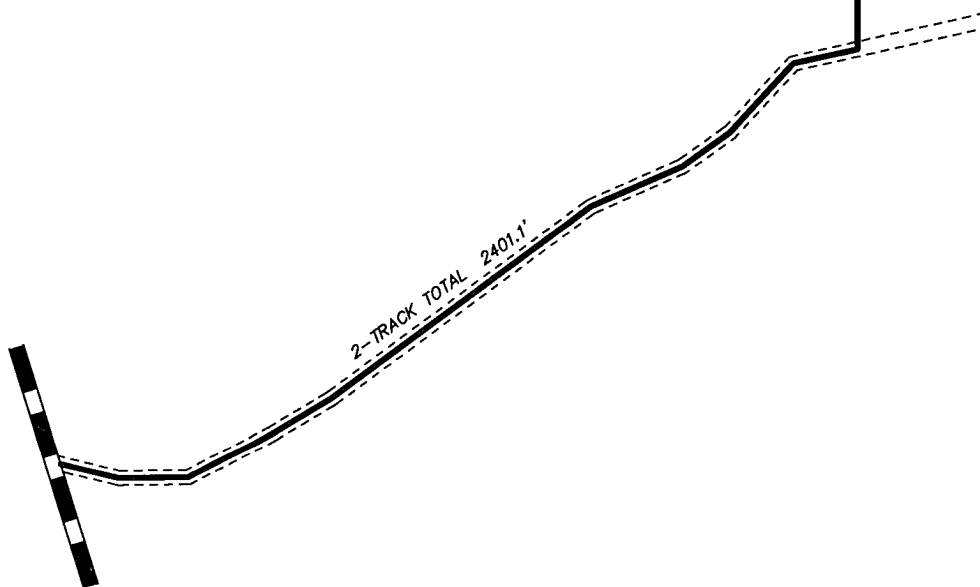
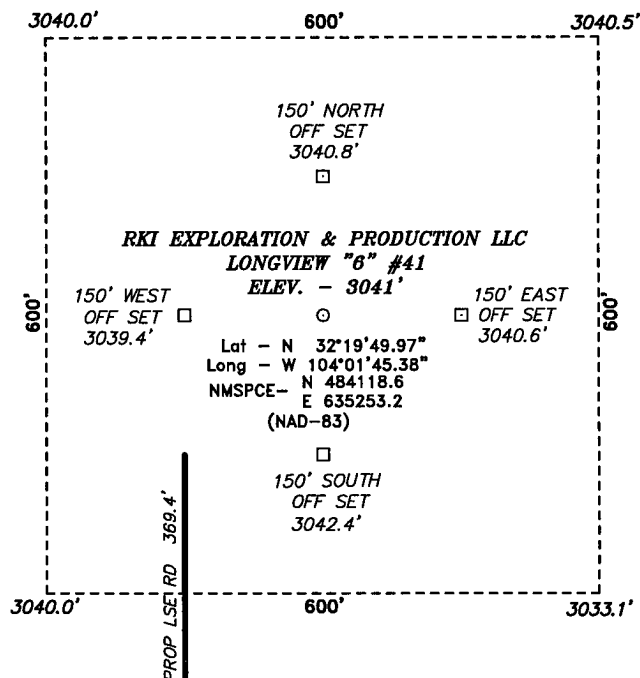
NOVEMBER 12 2012  
Date Surveyed

*Gary L. Jones*  
Signature & Seal  
Professional Surveyor 7977

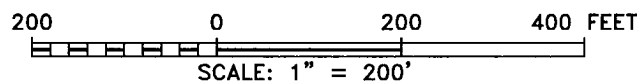
W. B. Jones  
Certificate No. Gary L. Jones 7977

BASIN SURVEYS

SECTION 6, TOWNSHIP 23 SOUTH, RANGE 29 EAST, N.M.P.M.,  
EDDY COUNTY, NEW MEXICO.



2-TRACK TOTAL 2401.1'



Directions to Location:

FROM HWY 31 AND REFINERY ROAD, GO NORTHWEST  
0.4 MILES TO 2-TRACK AND PROPOSED LEASE ROAD.

**BASIN SURVEYS** P.O. BOX 1786—HOBBS, NEW MEXICO

W.O. Number: 21948 Drawn By: J. SMALL

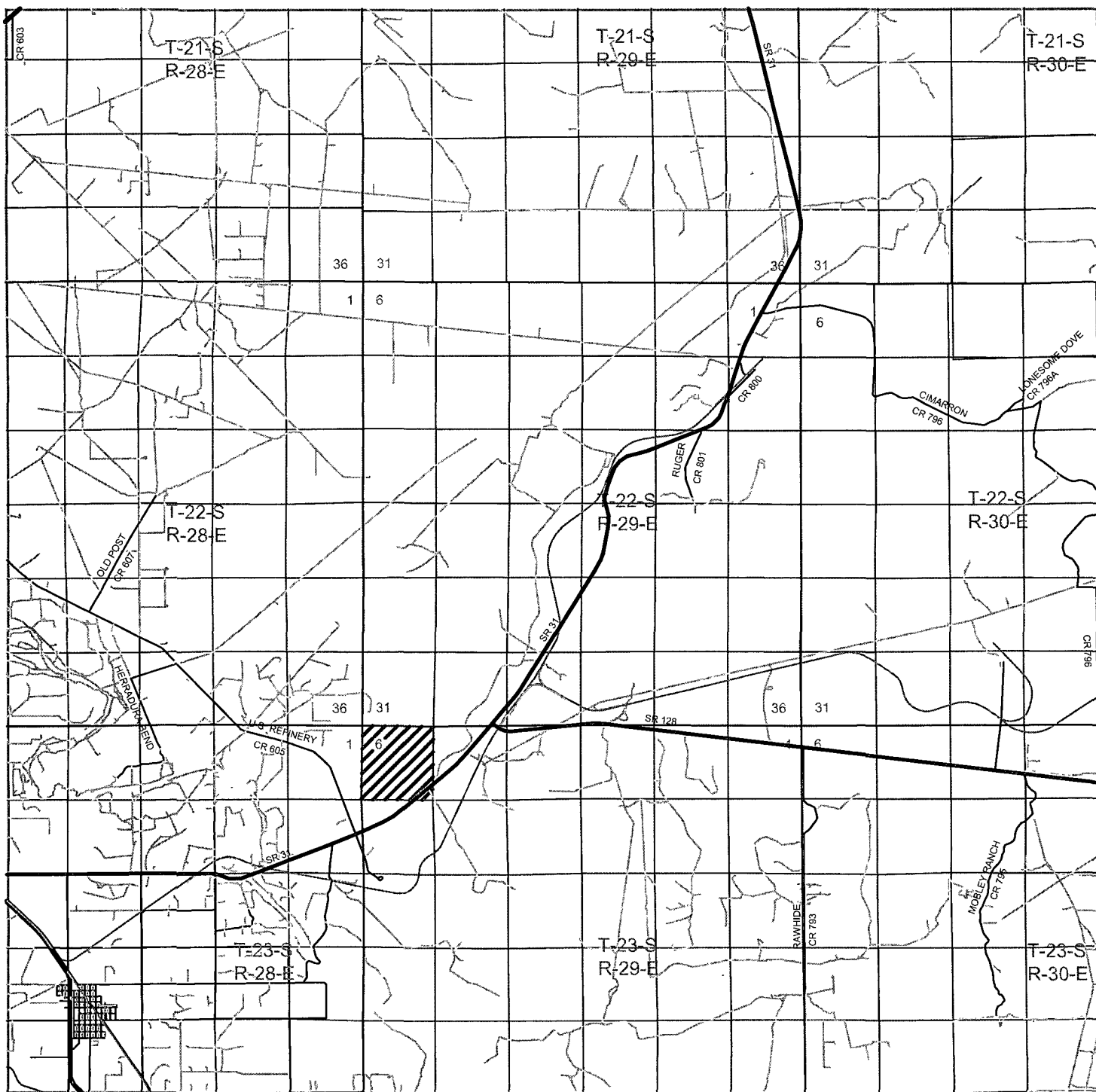
Date: 11-17-2009 Disk: JMS 21948

**RKI EXPLORATION & PRODUCTION LLC**

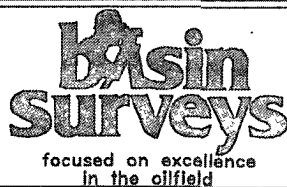
REF: LONGVIEW "6" #41 / WELL PAD TOPO

THE LONGVIEW "6" #41 LOCATED 1140'  
FROM THE SOUTH LINE AND 840' FROM THE WEST LINE OF  
SECTION 6, TOWNSHIP 23 SOUTH, RANGE 29 EAST,  
N.M.P.M., EDDY COUNTY, NEW MEXICO.

Survey Date: 11-12-2009 Sheet 1 of 1 Sheets



**LONGVIEW "6" #41**  
 Located 1140' FSL and 840' FWL  
 Section 6, Township 23 South, Range 29 East,  
 N.M.P.M., Eddy County, New Mexico.



P.O. Box 1786  
 1120 N. West County Rd.  
 Hobbs, New Mexico 88241  
 (575) 393-7316 - Office  
 (575) 392-2206 - Fax  
[basinsurveys.com](http://basinsurveys.com)

W.O. Number: JMS 21948

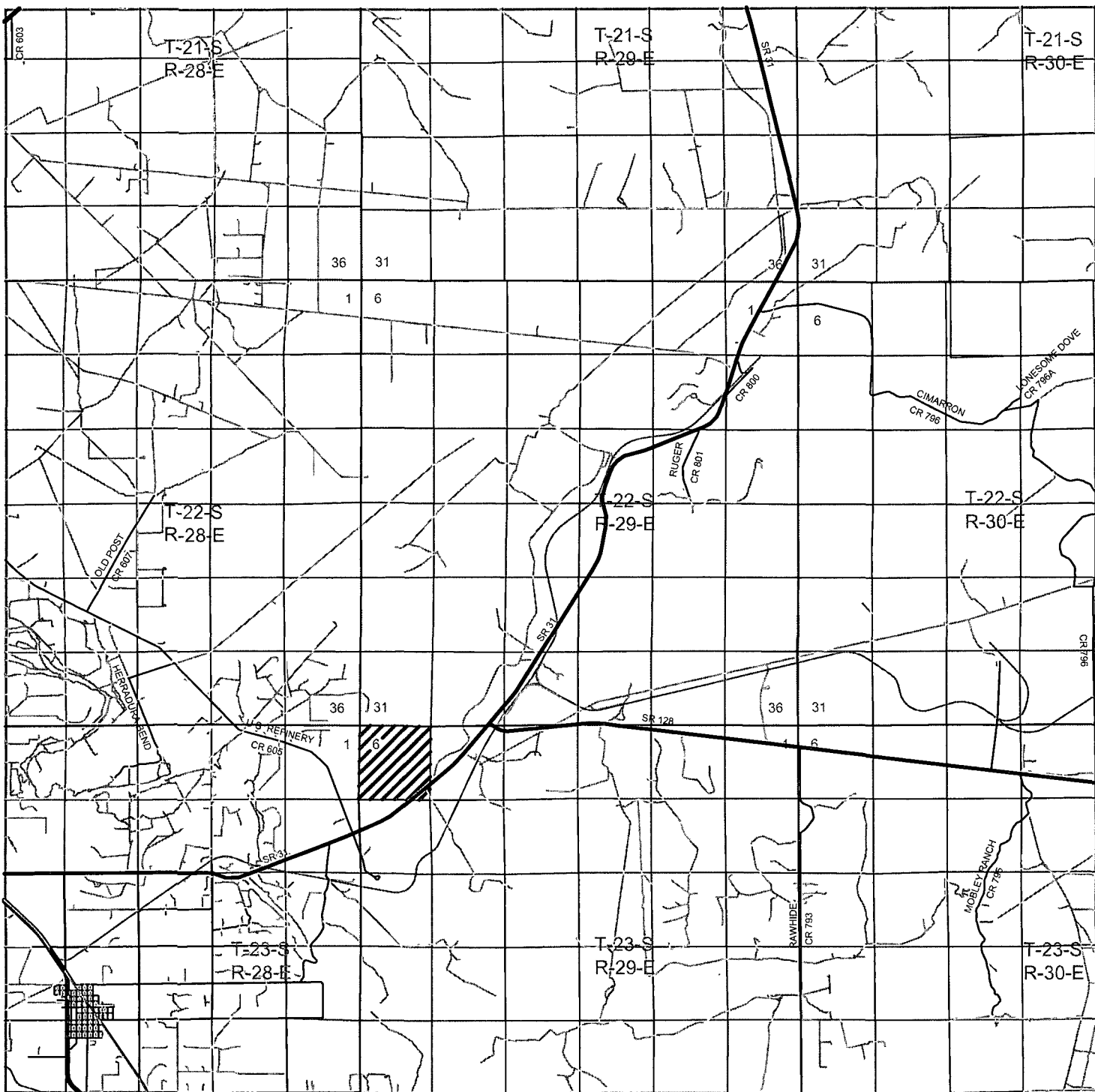
Survey Date: 11-12-2009

Scale: 1" = 2 Miles

Date: 11-17-2009

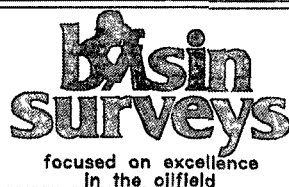


**RKI EXPLORATION  
 & PRODUCTION  
 LLC**



## LONGVIEW "6" #41

Located 1140' FSL and 840' FWL  
Section 6, Township 23 South, Range 29 East,  
N.M.P.M., Eddy County, New Mexico.



P.O. Box 1786  
1120 N. West County Rd.  
Hobbs, New Mexico 88241  
(575) 393-7316 - Office  
(575) 392-2206 - Fax  
basinsurveys.com

W.O. Number: JMS 21948

Survey Date: 11-12-2009

Scale: 1" = 2 Miles

Date: 11-17-2009

RKI EXPLORATION  
& PRODUCTION  
LLC