

DISTRICT I  
1625 N. French Dr., Hobbs, NM 88240  
Phone (575) 393-6161 Fax: (575) 393-0720

DISTRICT II  
811 S. First St., Artesia, NM 88210  
Phone (575) 746-1283 Fax: (575) 746-9720

DISTRICT III  
1000 Rio Brazos Rd., Aztec, NM 87410  
Phone (505) 334-6178 Fax: (505) 334-6170

DISTRICT IV  
1220 S. St. Francis Dr., Santa Fe, NM 87505  
Phone (505) 476-3480 Fax: (505) 476-3482

State of New Mexico  
Energy, Minerals and Natural Resources Department

RECEIVED  
SEP 05 2012

Form C-102  
August 1, 2011

NMOC D ARTES!

Submit one copy to appropriate  
District Office

# OIL CONSERVATION DIVISION

1220 South St. Francis Dr.  
Santa Fe, New Mexico 87505

## WELL LOCATION AND ACREAGE DEDICATION PLAT

☐ AMENDED REPORT

API Number <b>30-015-40398</b>	Pool Code <b>53600</b>	Pool Name <b>San Lorenzo Bone Spring</b>
Property Code <b>39278</b>	Property Name <b>SAN LORENZO 22/27 LE FEE</b>	Well Number <b>1H</b>
OGRID No. <b>14744</b>	Operator Name <b>MEWBOURNE OIL COMPANY</b>	Elevation <b>2977'</b>

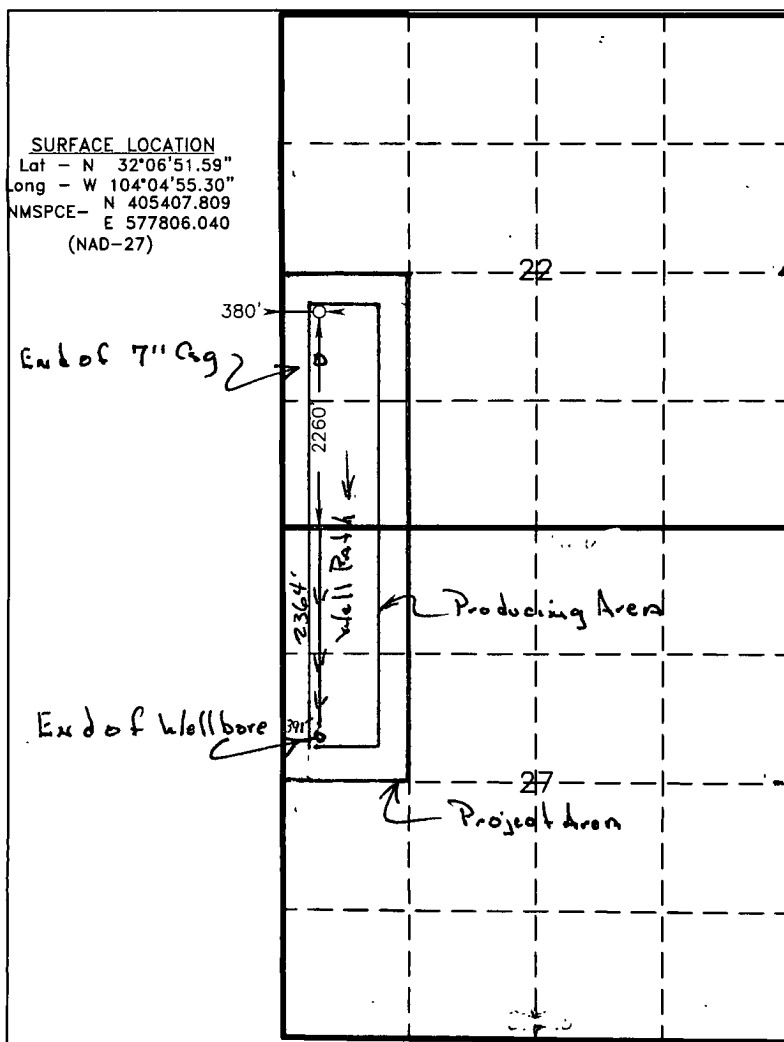
### Surface Location

UL or lot No.	Section	Township	Range	Lot Idn	Feet from the	North/South line	Feet from the	East/West line	County
<b>L</b>	<b>22</b>	<b>25 S</b>	<b>28 E</b>		<b>2260</b>	<b>SOUTH</b>	<b>380</b>	<b>WEST</b>	<b>EDDY</b>

### Bottom Hole Location If Different From Surface

UL or lot No.	Section	Township	Range	Lot Idn	Feet from the	North/South line	Feet from the	East/West line	County
<b>E</b>	<b>27</b>	<b>25 S</b>	<b>28 E</b>		<b>2364</b>	<b>North</b>	<b>391</b>	<b>West</b>	<b>Eddy</b>
Dedicated Acres <b>160</b>	Joint or Infill	Consolidation Code	Order No.						

NO ALLOWABLE WILL BE ASSIGNED TO THIS COMPLETION UNTIL ALL INTERESTS HAVE BEEN CONSOLIDATED  
OR A NON-STANDARD UNIT HAS BEEN APPROVED BY THE DIVISION



### OPERATOR CERTIFICATION

I hereby certify that the information contained herein is true and complete to the best of my knowledge and belief, and that this organization either owns a working interest or unleased mineral interest in the land including the proposed bottom hole location or has a right to drill this well at this location pursuant to a contract with an owner of such a mineral or working interest, or to a voluntary pooling agreement or a compulsory pooling order heretofore entered by the division.

Signature **N.M. Pouncy** Date **8/31/12**

Printed Name **N.M. Pouncy**

Email Address

### SURVEYOR CERTIFICATION

I hereby certify that the well location shown on this plat was plotted from field notes of actual surveys made by me or under my supervision, and that the same is true and correct to the best of my belief.

Date Surveyed **August 6, 2012**  
Signature & Seal of Professional Surveyor **7977**  
Professional Surveyor No. **26893**

Certificate No. **Gary L. Jones 7977**

BASIN SURVEYS 26893