

District I  
1625 N. French Dr., Hobbs, NM 88240  
District II  
1301 W. Grand Avenue, Artesia, NM 88210  
District III  
1000 Rio Brazos Road, Aztec, NM 87410  
District IV  
1220 S. St. Francis Dr., Santa Fe, NM 87505

State of New Mexico  
Energy Minerals and Natural Resources  
Oil Conservation Division  
1220 South St. Francis Dr.  
Santa Fe, NM 87505

Form C-101  
June 16, 2008

Submit to appropriate District Office

☐ AMENDED REPORT

**APPLICATION FOR PERMIT TO DRILL, RE-ENTER, DEEPEN, PLUGBACK, OR ADD A ZONE**

|   |  |  |
|---|--|--|
| <sup>1</sup> Operator Name and Address<br>COG OPERATING LLC, ONE CONCHO CENTER, MIDLAND, TX |  | <sup>2</sup> OGRID Number<br>229137    |
| <sup>3</sup> Property Code<br>39088   | <sup>4</sup> Property Name<br>LAKEWOOD SWD | <sup>5</sup> ABB Number<br>30-15-70717 |
| <sup>6</sup> Proposed Pool 1<br>SWD; CISCO - 96099  |  | <sup>7</sup> Proposed Pool 2<br>#1     |

<sup>7</sup> Surface Location

| UL or lot no | Section | Township | Range | Lot Idn | Feet from the | North/South line | Feet from the | East/West line | County |
|--------------|---------|----------|-------|---------|---------------|------------------|---------------|----------------|--------|
| B            | 8       | 19S      | 26E   | B       | 1220          | N                | 2490          | E              | EDDY   |

<sup>8</sup> Proposed Bottom Hole Location If Different From Surface

| UL or lot no | Section | Township | Range | Lot Idn | Feet from the | North/South line | Feet from the | East/West line | County |
|--------------|---------|----------|-------|---------|---------------|------------------|---------------|----------------|--------|
|              |         |          |       |         |               |                  |               |                |        |

**Additional Well Information**

|  |                                       |                                   |                                      |   |
|--|---------------------------------------|-----------------------------------|--------------------------------------|---|
| <sup>11</sup> Work Type Code<br>NEW WELL | <sup>12</sup> Well Type Code<br>SWD   | <sup>13</sup> Cable/Rotary        | <sup>14</sup> Lease Type Code<br>FEE | <sup>15</sup> Ground Level Elevation<br>3353' |
| <sup>16</sup> Multiple<br>N              | <sup>17</sup> Proposed Depth<br>8400' | <sup>18</sup> Formation<br>CANYON | <sup>19</sup> Contractor             | <sup>20</sup> Spud Date<br>8/31/2012          |

<sup>21</sup> Proposed Casing and Cement Program

| Hole Size | Casing Size | Casing weight/foot | Setting Depth | Sacks of Cement | Estimated TOC |
|-----------|-------------|--------------------|---------------|-----------------|---------------|
| 12.25"    | 9.625"      | 40 ppf             | 1200'         | 400 sxs         | Surface       |
| 8.75"     | 7"          | 26 ppf             | 8400'         | 1075 sxs        | Surface       |
|           |             |                    |               |                 |               |
|           |             |                    |               |                 |               |

<sup>22</sup> Describe the proposed program. If this application is to DEEPEN or PLUG BACK, give the data on the present productive zone and proposed new productive zone. Describe the blowout prevention program, if any. Use additional sheets if necessary.

COG purposes to drill at 24" hole to 40' w/ fresh water mud system and set 20" conductor casing that is cemented to surface. Drill a 12 1/4" hole with cut brine to 1200' and set and cement to surface 9 5/8" casing. Drill out with a 8 3/4" bit to TD at 8,400' with a FW/cut brine system and set 7" casing and cement to surface. A DV tool will be run at approx 7,000'.

SWD-1350

RECEIVED

SEP 19 2012

<sup>23</sup> I hereby certify that the information given above is true and complete to the best of my knowledge and belief

Signature:

Printed name: KELLY J. HOLLY

Title: PERMITTING TECH

E-mail Address: kholly@concho.com

Date: 06/12/2012

Phone: 432-685-4384

INMOCD ARTESIA  
OIL CONSERVATION DIVISION

Approved by:

Title

Approval Date: 9/19/2012

Expiration Date: 9/19/2014

Conditions of Approval Attached ☐

DISTRICT I  
1625 N French Dr., Hobbs, NM 88240  
Phone: (575) 393-6161 Fax: (575) 393-0720  
DISTRICT II  
811 S. First St., Artesia, NM 88210  
Phone: (505) 748-1283 Fax: (505) 748-9720  
DISTRICT III  
1000 Rio Brazos Road, Aztec, NM 87410  
Phone: (505) 334-6178 Fax: (505) 334-6170  
DISTRICT IV  
1220 S. St. Francis Dr., Santa Fe, NM 87505  
Phone: (505) 476-3460 Fax: (505) 476-3462

State of New Mexico  
Energy, Minerals & Natural Resources Department  
OIL CONSERVATION DIVISION  
1220 South St. Francis Dr.  
Santa Fe, New Mexico 87505

Form C-10:  
Revised August 1, 201  
Submit one copy to appropriate  
District Office

AMENDED REPORT

WELL LOCATION AND ACREAGE DEDICATION PLAT

|                        |                                     |                         |
|------------------------|-------------------------------------|-------------------------|
| API Number<br>30-015-  | Pool Code<br>96099                  | Pool Name<br>SWD; Cisco |
| Property Code<br>39088 | Property Name<br>LAKEWOOD SWD       | Well Number<br>1        |
| OGRID No.<br>229137    | Operator Name<br>COG OPERATING, LLC | Elevation<br>3353'      |

| Surface Location |         |          |       |         |               |                  |               |                |        |
|------------------|---------|----------|-------|---------|---------------|------------------|---------------|----------------|--------|
| UL or lot No     | Section | Township | Range | Lot Idn | Feet from the | North/South line | Feet from the | East/West line | County |
| B                | 8       | 19-S     | 26-E  |         | 1220          | NORTH            | 2490          | EAST           | EDDY   |

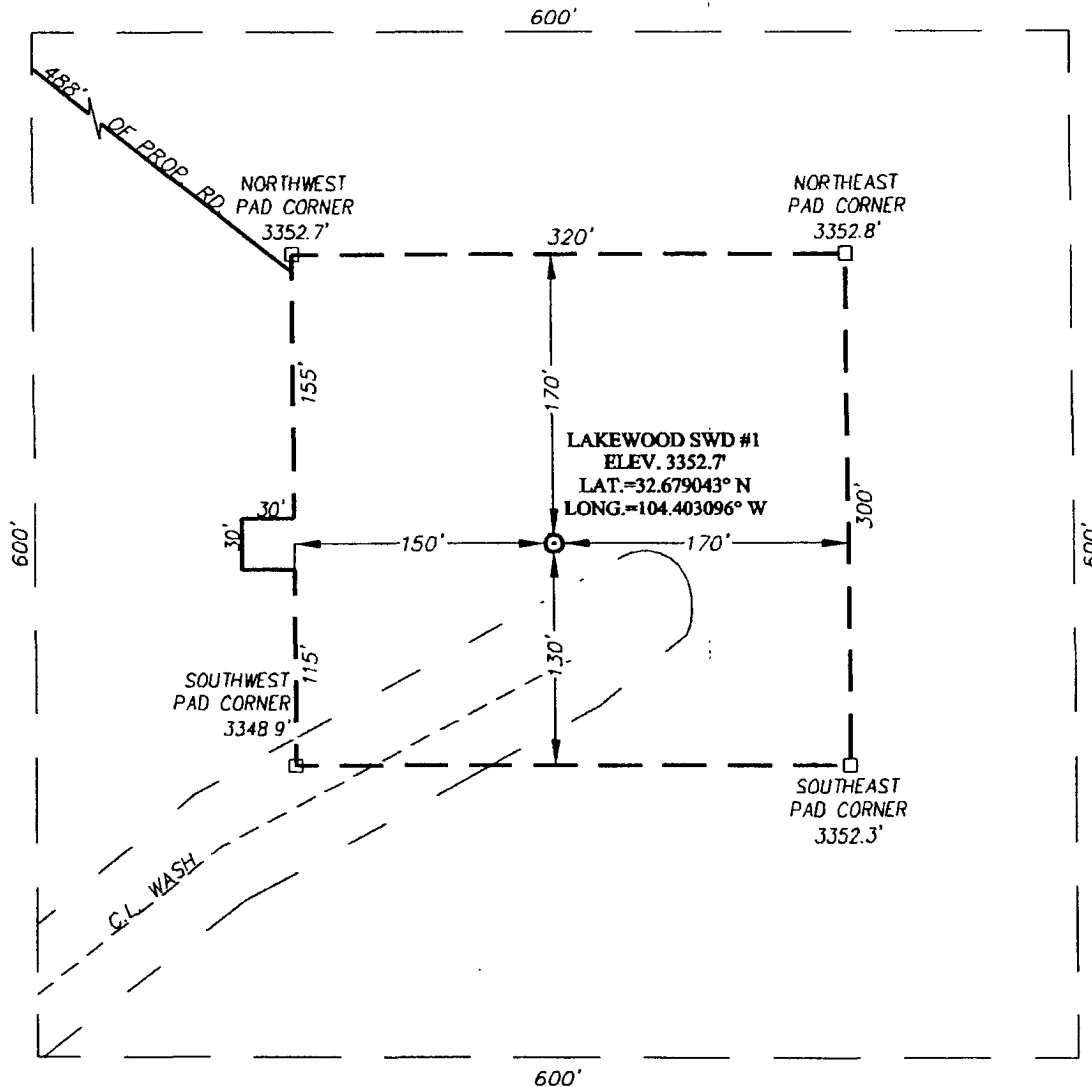
| Bottom Hole Location If Different From Surface |         |          |       |         |               |                  |               |                |        |
|--|---------|----------|-------|---------|---------------|------------------|---------------|----------------|--------|
| UL or lot No                                   | Section | Township | Range | Lot Idn | Feet from the | North/South line | Feet from the | East/West line | County |
|  |         |          |       |         |               |                  |               |                |        |

|                       |                 |                    |                       |
|-----------------------|-----------------|--------------------|-----------------------|
| Dedicated Acres<br>40 | Joint or Infill | Consolidation Code | Order No.<br>SWD-1350 |
|-----------------------|-----------------|--------------------|-----------------------|

NO ALLOWABLE WILL BE ASSIGNED TO THIS COMPLETION UNTIL ALL INTERESTS HAVE BEEN CONSOLIDATED OR A NON-STANDARD UNIT HAS BEEN APPROVED BY THE DIVISION

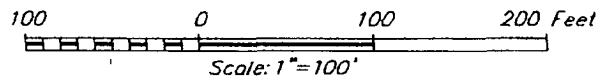
|  |   |   |
|--|---|---|
|  | <p>GEODETIC COORDINATES<br/>NAD 27 NME</p> <p>SURFACE LOCATION<br/>Y=610753.8 N<br/>X=478534.8 E<br/>LAT.=32.679043° N<br/>LONG.=104.403096° W</p>  | <p><b>OPERATOR CERTIFICATION</b></p> <p>I hereby certify that the information herein is true and complete to the best of my knowledge and belief, and that this organization either owns a working interest or unleased mineral interest in the land including the proposed bottom hole location or has a right to drill this well at this location pursuant to a contract with an owner of such mineral or working interest, or to a voluntary pooling agreement or a compulsory pooling order heretofore entered by the division.</p> <p> 6-12-12<br/>Signature Date<br/>Kelly J. Holly<br/>Printed Name<br/>kholly@concho.com<br/>E-mail Address</p> |
|  | <p><b>SURVEYOR CERTIFICATION</b></p> <p>I hereby certify that the well location shown on this plat was plotted from field notes of actual surveys made by me or under my supervision, and that the same is true and correct to the best of my belief.</p> <p>MARCH 02, 2012<br/>Date of Survey</p> <p> Seal of Professional Surveyor:<br/>Signature<br/>3230<br/>Certificate Number<br/>Gary G. Eidson 12641<br/>Ronald J. Eidson 3239<br/>ACR JWSC W.O. 12.11 0268</p> |   |

**SECTION 8, TOWNSHIP 19 SOUTH, RANGE 26 EAST, N.M.P.M.**  
**EDDY COUNTY** **NEW MEXICO**



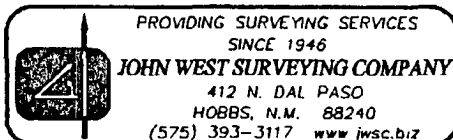
**DIRECTIONS TO LOCATION**

FROM THE INTERSECTION OF U.S. HWY. #285 (SEVEN RIVERS) AND CO. RD. #140 (HAVEN HILL), GO SOUTHWEST ON CO. RD. #140 APPROX. 0.5 MILES TO LEASE ROAD. TURN RIGHT AND GO NORTHWEST APPROX. 809 FEET. TURN LEFT AND GO WEST APPROX. 0.3 MILES. TURN LEFT AND GO SOUTH APPROX. 729 FEET. TURN RIGHT AND GO WEST APPROX. 664 FEET. FOLLOW ROAD LEFT THEN SOUTH APPROX. 0.5 MILES. TURN RIGHT AND GO EAST APPROX. 0.4 MILES TO OLD WELL PAD CORNER. THIS LOCATION IS SOUTHEAST APPROX. 705 FEET.



**COG OPERATING, LLC**

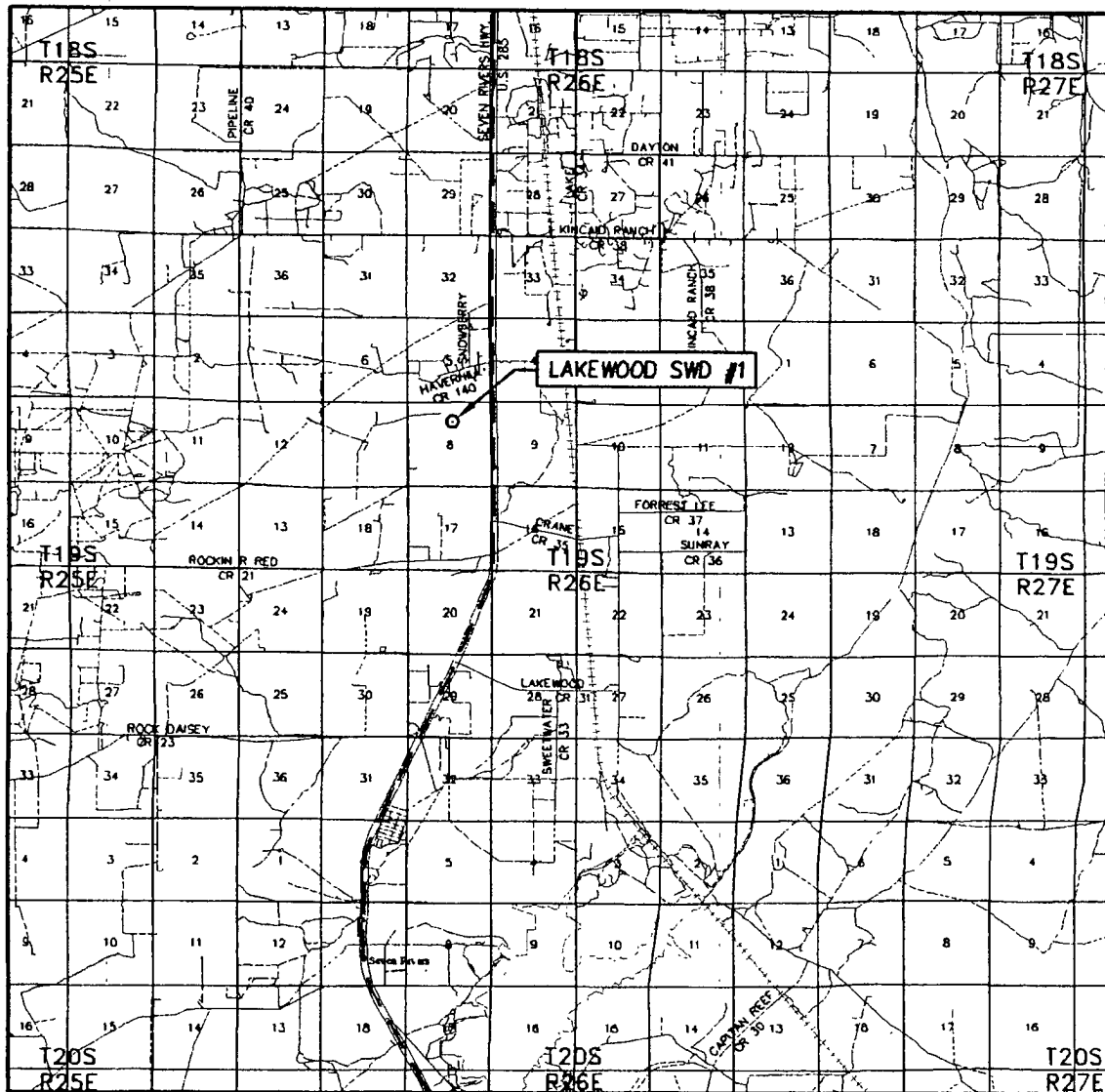
**LAKEWOOD SWD #1 WELL**  
**LOCATED 1220 FEET FROM THE NORTH LINE**  
**AND 2490 FEET FROM THE EAST LINE OF SECTION 8,**  
**TOWNSHIP 19 SOUTH, RANGE 26 EAST, N.M.P.M.,**  
**EDDY COUNTY, NEW MEXICO**



|                      |                   |               |
|----------------------|-------------------|---------------|
| Survey Date: 3/02/12 | CAD Date: 3/13/12 | Drawn By: ACR |
| W.O. No: 12110268    | Rev.              | Rel. W.O.     |

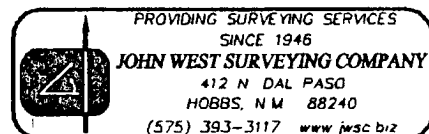
Sheet 1 of 1

# VICINITY MAP

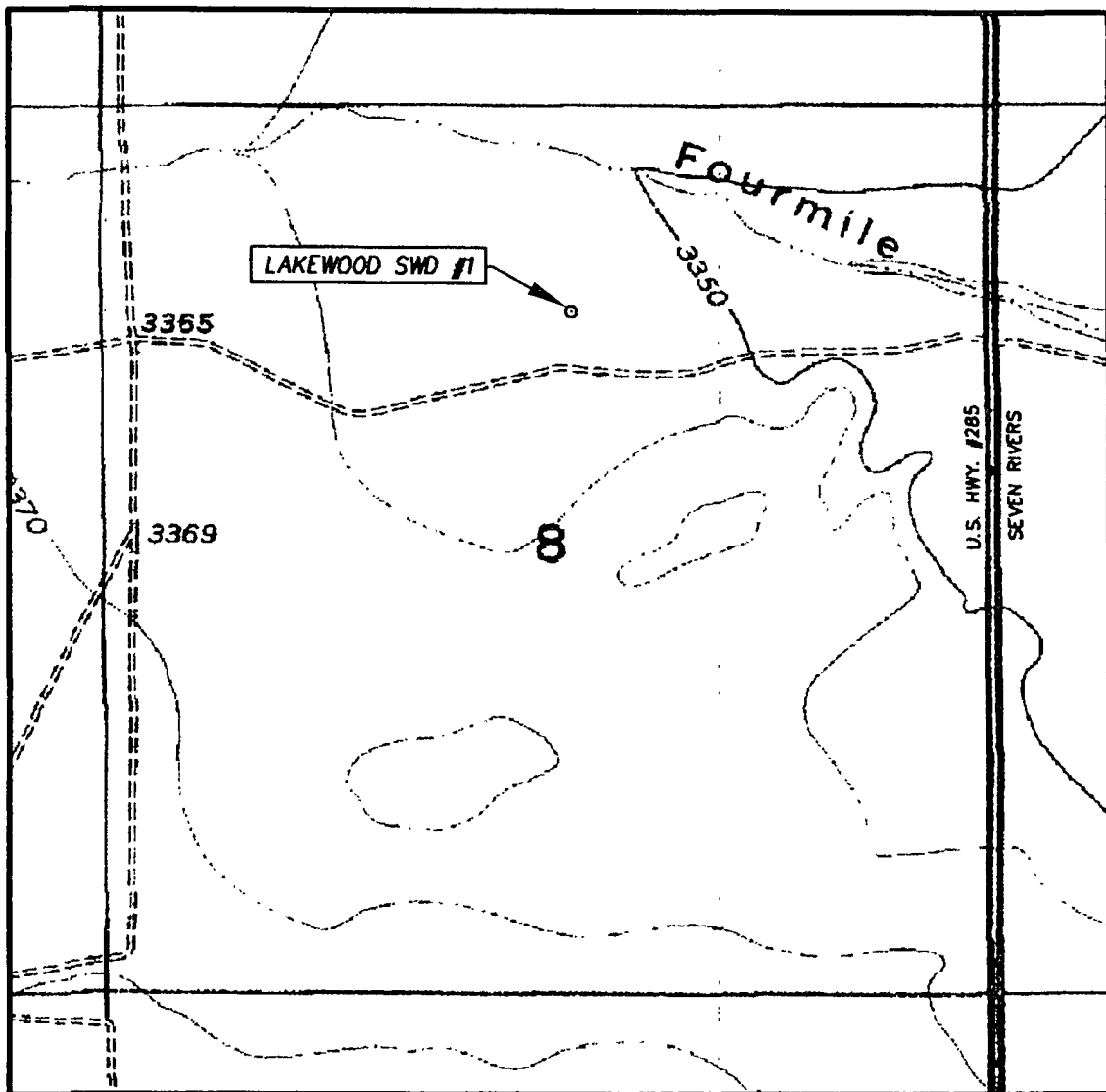


SCALE: 1" = 2 MILES

SEC 8 TWP. 19-S RGE. 26-E  
 SURVEY N.M.P.M.  
 COUNTY EDDY STATE NEW MEXICO  
 DESCRIPTION 1220' FNL & 2490' FEL  
 ELEVATION 3353'  
 OPERATOR COG OPERATING, LLC  
 LEASE LAKEWOOD SWD



# LOCATION VERIFICATION MAP



SCALE: 1" = 1000'

CONTOUR INTERVAL:  
DAYTON, N.M. - 10'

SEC. 8 TWP. 19-S RGE 26-E

SURVEY N.M.P.M

COUNTY EDDY STATE NEW MEXICO

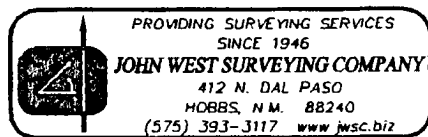
DESCRIPTION 1220' FNL & 2490' FEL

ELEVATION 3353'

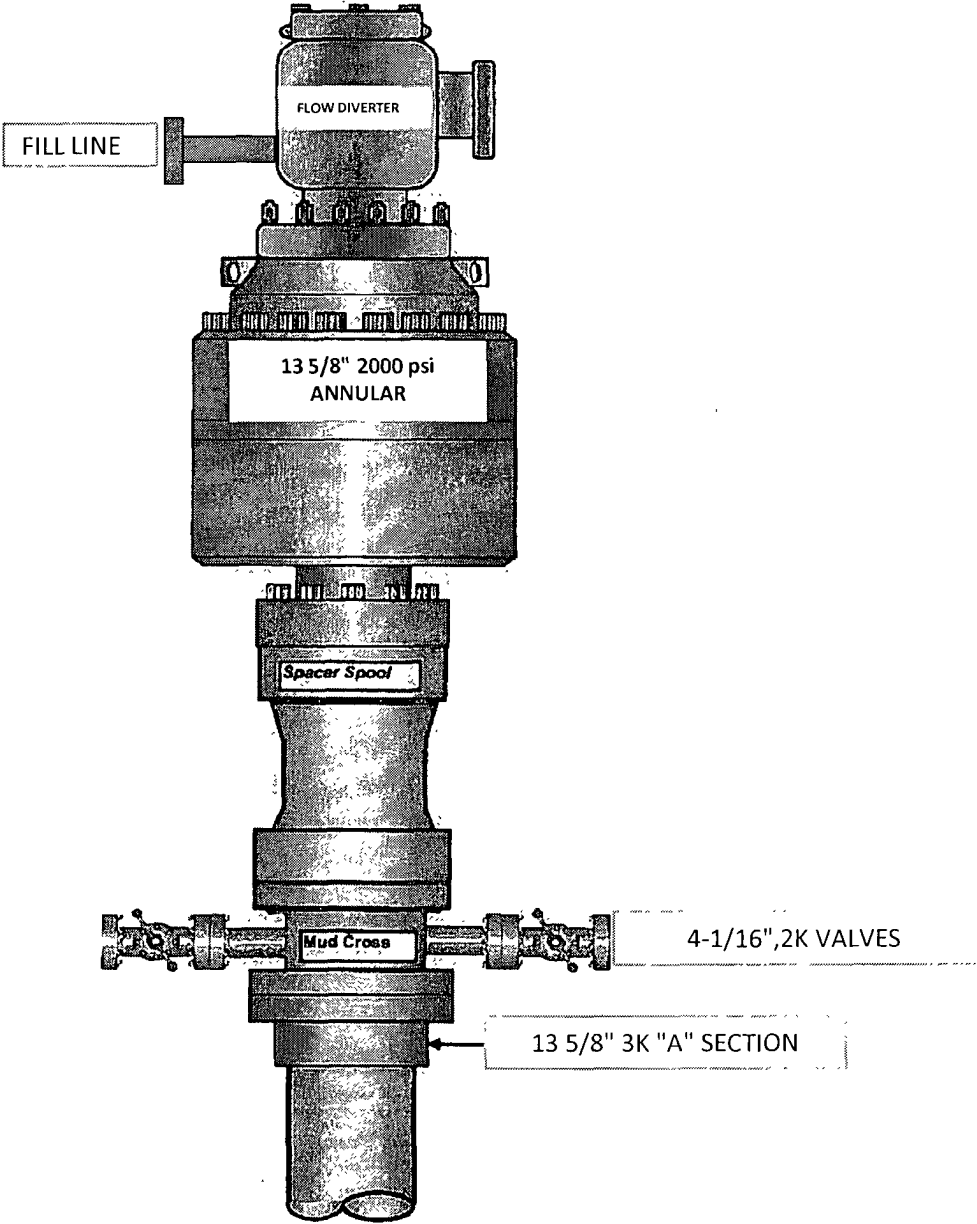
OPERATOR COG OPERATING, LLC

LEASE LAKEWOOD SWD

U.S.G.S. TOPOGRAPHIC MAP  
DAYTON, NM



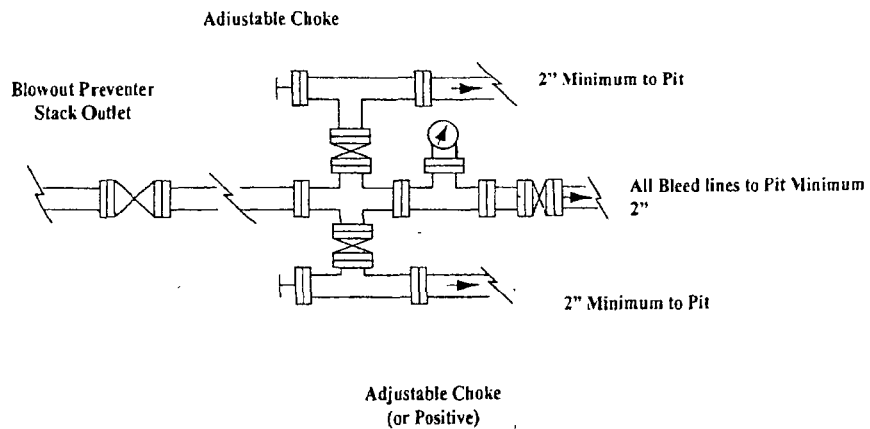
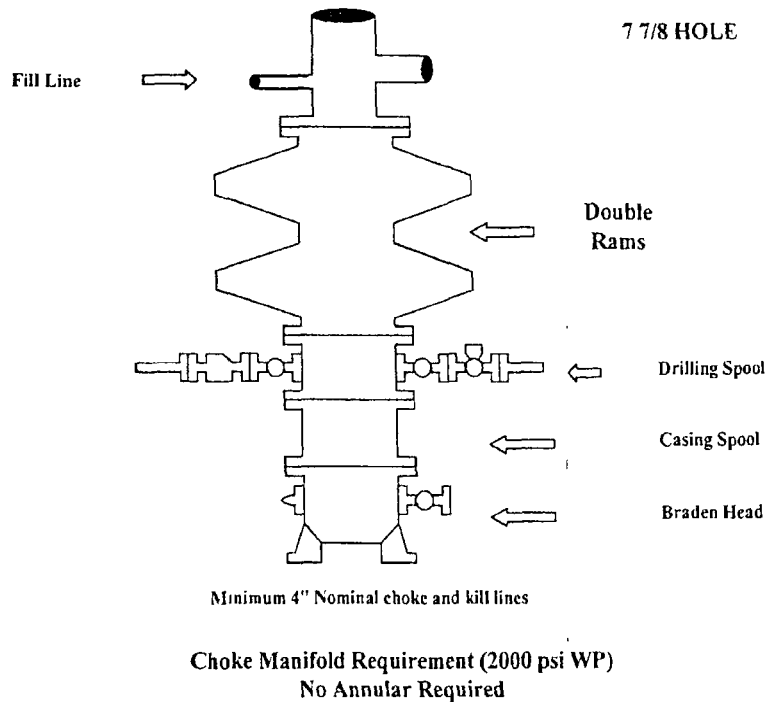
13 5/8" 2K ANNULAR



# COG Operating LLC

## Exhibit #9

### BOPE and Choke Schematic



**NOTES REGARDING THE BLOWOUT PREVENTERS**

**Master Drilling Plan  
Eddy County, New Mexico**

1. Drilling nipple to be so constructed that it can be removed without use of a welder through rotary table opening, with minimum I.D. equal to preventer bore.
2. Wear ring to be properly installed in head.
3. Blow out preventer and all fittings must be in good condition, 2000 psi WP minimum.
4. All fittings to be flanged.
5. Safety valve must be available on rig floor at all times with proper connections, valve to be full 2000 psi WP minimum.
6. All choke and fill lines to be securely anchored especially ends of choke lines
7. Equipment through which bit must pass shall be at least as large as the diameter of the casing being drilled through.
8. Kelly cock on Kelly.
9. Extension wrenches and hands wheels to be properly installed
10. Blow out preventer control to be located as close to driller's position as feasible.
11. Blow out preventer closing equipment to include minimum 40-gallon accumulator, two independent sources of pump power on each closing unit installation all API specifications.