

**District I**

1625 N. French Dr., Hobbs, NM 88240

**District II**

1301 W. Grand Avenue, Artesia, NM 88210

**District III**

1000 Rio Brazos Rd., Aztec, NM 87410

**District IV**

1220 S. St. Francis Dr., Santa Fe, NM 87505

State of New Mexico  
Energy, Minerals & Natural Resources Department  
**OIL CONSERVATION DIVISION**  
1220 South St. Francis Dr.  
Santa Fe, NM 87505

Form C-102

Revised October 15, 2009

Submit one copy to appropriate

District Office

☐ AMENDED REPORT**NMOCD ARTESIA****OCT 09 2012****WELL LOCATION AND ACREAGE DEDICATION PLAT***As Drilled*

<sup>1</sup> API Number 30-015-38433	<sup>2</sup> Pool Code 96757	<sup>3</sup> Pool Name Cotton Draw; Delaware South
<sup>4</sup> Property Code 300635	<sup>5</sup> Property Name <b>COTTON DRAW UNIT</b>	<sup>6</sup> Well Number <b>161</b>
<sup>7</sup> OGRID No. <b>6137</b>	<sup>8</sup> Operator Name <b>DEVON ENERGY PRODUCTION COMPANY, L.P.</b>	<sup>9</sup> Elevation <b>3457.5</b>

<sup>10</sup> Surface Location

UL or lot no.	Section	Township	Range	Lot Idn	Feet from the	North/South line	Feet from the	East/West line	County
<b>D</b>	<b>2</b>	<b>25 S</b>	<b>31 E</b>		<b>200</b>	<b>NORTH</b>	<b>440</b>	<b>WEST</b>	<b>EDDY</b>

<sup>11</sup> Bottom Hole Location If Different From Surface

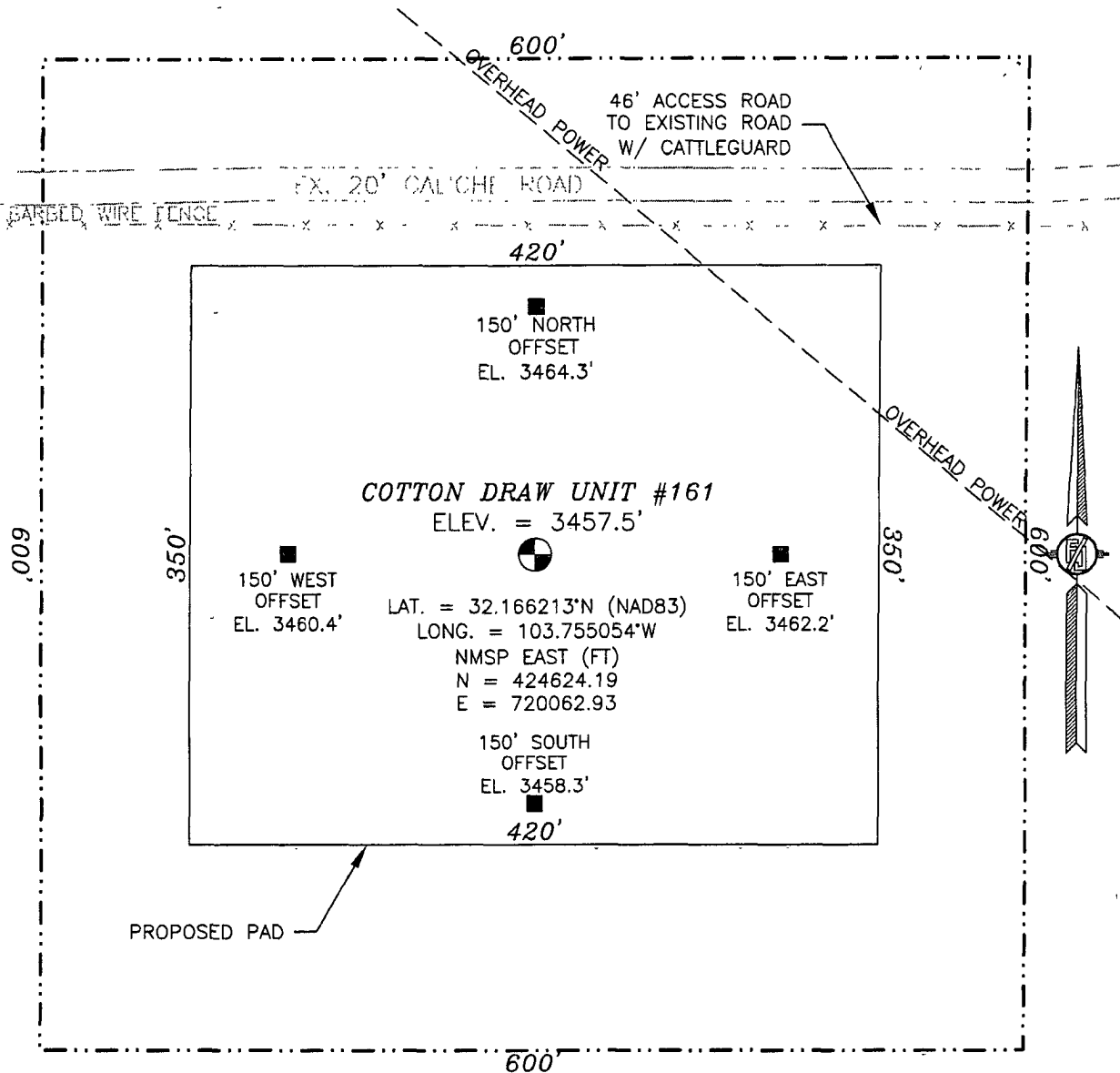
UL or lot no.	Section	Township	Range	Lot Idn	Feet from the	North/South line	Feet from the	East/West line	County
<b>M</b>	<b>2</b>	<b>25 S</b>	<b>31 E</b>		<b>176</b>	<b>SOUTH</b>	<b>644</b>	<b>WEST</b>	<b>EDDY</b>

<sup>12</sup> Dedicated Acres 159.66	<sup>13</sup> Joint or Infill	<sup>14</sup> Consolidation Code	<sup>15</sup> Order No.
---	-------------------------------	----------------------------------	-------------------------

No allowable will be assigned to this completion until all interests have been consolidated or a non-standard unit has been approved by the division.

<p><b>SURFACE LOCATION</b></p> <p>NW CORNER SEC. 2 LAT. = 32.166774°N LONG. = 103.757188°W</p> <p>NMSP EAST (FT) N = 424824.54 E = 719621.10</p> <p><b>COTTON DRAW UNIT #161</b> ELEV. = 3457.5' LAT. = 32.166213°N (NAD83) LONG. = 103.755054°W NMSP EAST (FT) N = 424624.19 E = 720062.93</p> <p><b>NE CORNER SEC. 2</b> LAT. = 32.166687°N LONG. = 103.740097°W NMSP EAST (FT) N = 424821.55 E = 724911.12</p> <p><b>Penetration Point: 192' FNL &amp; 460' FWL of Sec 2, 25S, 31E</b></p> <p><b>BOTTOM OF HOLE</b> LAT. = 32.152794°N (NAD83) LONG. = 103.755094°W NMSP EAST (FT) N = 419740.9 E = 720296.7</p> <p><b>SW CORNER SEC. 2</b> LAT. = 32.152267°N LONG. = 103.757231°W NMSP EAST (FT) N = 419545.75 E = 719636.14</p> <p><b>SE CORNER SEC. 2</b> LAT. = 32.152115°N LONG. = 103.740115°W NMSP EAST (FT) N = 419519.18 E = 724934.87</p>	<p><b>17 OPERATOR CERTIFICATION</b> I hereby certify that the information contained herein is true and complete to the best of my knowledge and belief, and that this organization either owns a working interest or unleased mineral interest in the land including the proposed bottom hole location or has a right to drill this well at this location pursuant to a contract with an owner of such a mineral or working interest, or to a voluntary pooling agreement or a compulsory pooling order heretofore entered by the division</p> <p><i>Patti Riechers</i> 10/08/2012 Signature Date</p> <p>Printed Name <b>Patti Riechers, Regulatory Specialist</b></p> <p><b>18 SURVEYOR CERTIFICATION</b> I hereby certify that the well location shown on this plat was plotted from field notes of actual surveys made by me or under my supervision, and that the same is true and correct to the best of my belief</p> <p>NOVEMBER 24, 2010 Date of Survey</p> <p><i>[Signature]</i> Signature and Seal of Professional Surveyor</p> <p>Certificate Number <b>FIDMONT, ARAMILLO, PLS 12797</b> SURVEY NO 333</p>
---	---

SECTION 2, TOWNSHIP 25 SOUTH, RANGE 31 EAST, N.M.P.M.  
EDDY COUNTY, STATE OF NEW MEXICO



010 50 100 200  
SCALE 1" = 100'

**DIRECTIONS TO LOCATION**

FROM CR 786 AND CR 791, GO SOUTH ON 791 3.1 MILES, TURN LEFT AND GO EAST 1.9 MILES, TURN LEFT AND GO NORTH 0.7 MILES, TURN LEFT AND GO WEST 0.3 MILES, TURN RIGHT AND GO NORTH 0.4 MILES, TURN LEFT AND GO WEST 0.6 MILES AND LOCATION IS ON THE LEFT (SOUTH) 230'.

DEVON ENERGY PRODUCTION COMPANY, L.P.

**COTTON DRAW UNIT #161**

LOCATED 200 FT. FROM THE NORTH LINE  
AND 440 FT. FROM THE WEST LINE OF  
SECTION 2, TOWNSHIP 25 SOUTH,  
RANGE 31 EAST, N.M.P.M.  
EDDY COUNTY, STATE OF NEW MEXICO

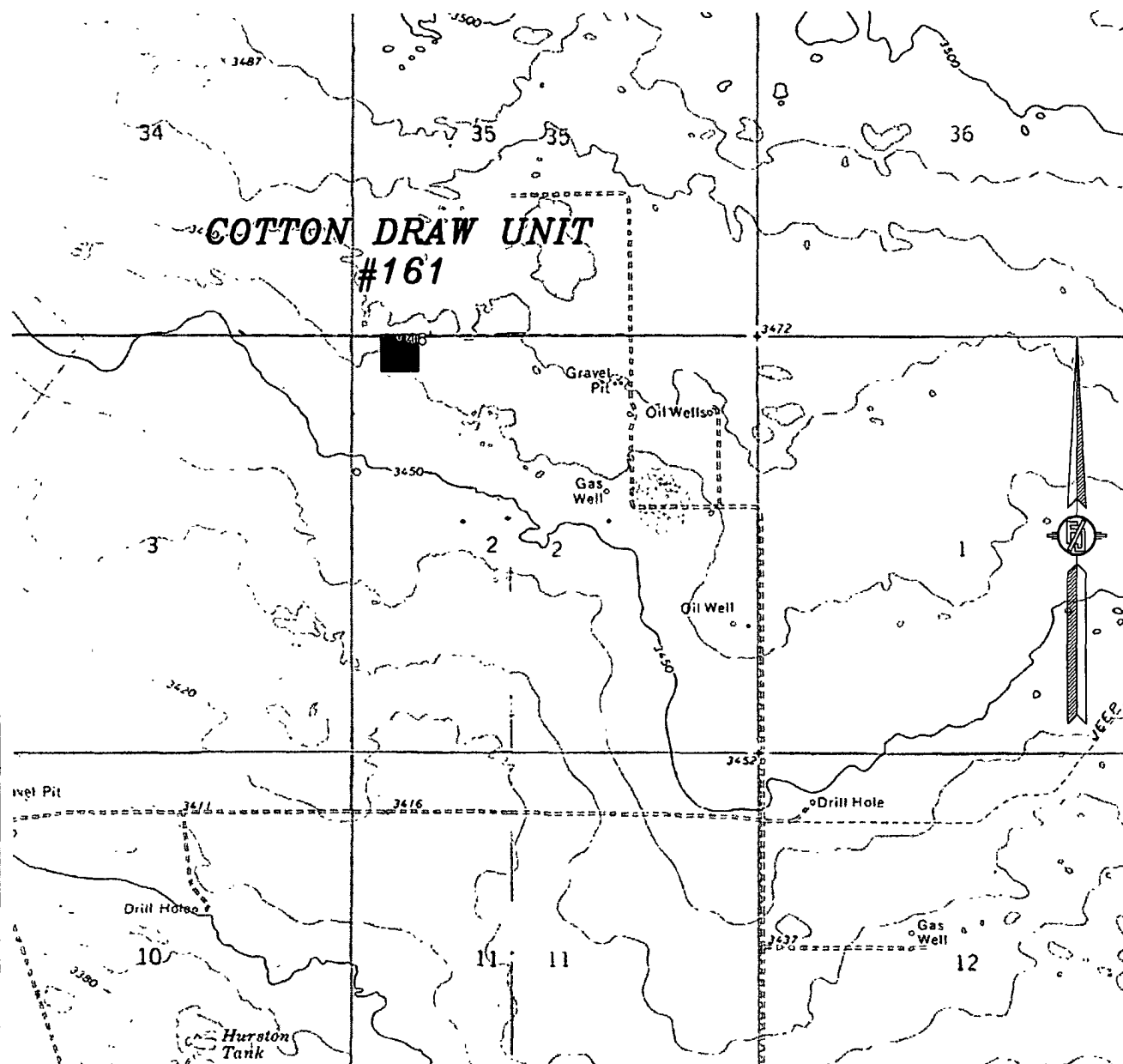
NOVEMBER 24, 2010

SURVEY NO. 333

MADRON SURVEYING, INC. 301 SOUTH CANAL (575) 887-5830 CARLSBAD, NEW MEXICO

SECTION 2, TOWNSHIP 25 SOUTH, RANGE 31 EAST, N.M.P.M.  
EDDY COUNTY, STATE OF NEW MEXICO

# LOCATION VERIFICATION MAP



CONTOUR INTERVAL  
BIG SINKS

NOT TO SCALE

DEVON ENERGY PRODUCTION COMPANY, L.P.

## COTTON DRAW UNIT #161

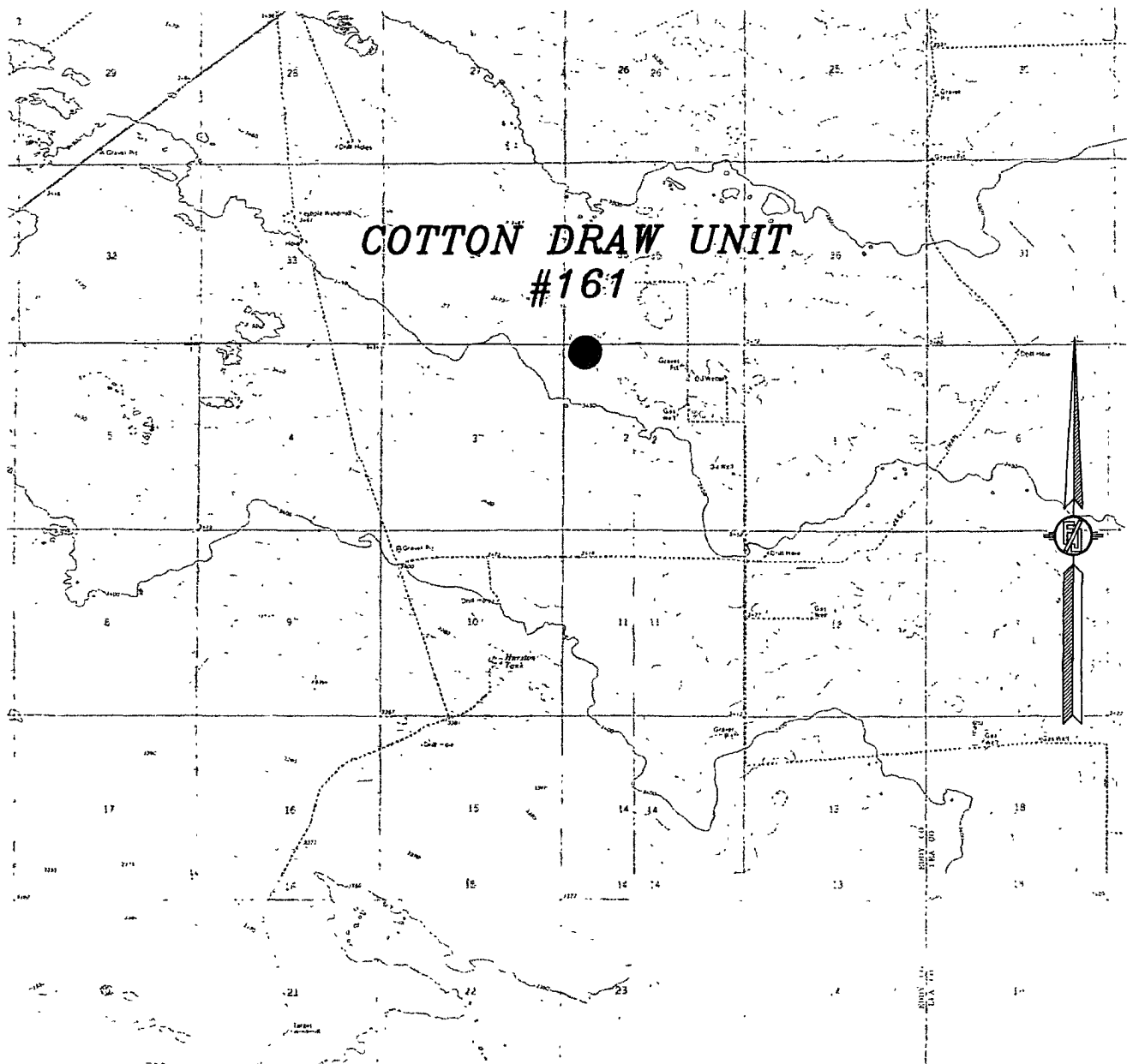
LOCATED 200 FT. FROM THE NORTH LINE  
AND 440 FT. FROM THE WEST LINE OF  
SECTION 2, TOWNSHIP 25 SOUTH,  
RANGE 31 EAST, N.M.P.M.  
EDDY COUNTY, STATE OF NEW MEXICO

NOVEMBER 24, 2010

SURVEY NO. 333

MADRON SURVEYING, INC. 301 SOUTH CANAL CARLSBAD, NEW MEXICO  
(575) 887-5830

SECTION 2, TOWNSHIP 25 SOUTH, RANGE 31 EAST, N.M.P.M.  
EDDY COUNTY, STATE OF NEW MEXICO  
**VICINITY MAP**



DEVON ENERGY PRODUCTION COMPANY, L.P.  
**COTTON DRAW UNIT #161**  
LOCATED 200 FT. FROM THE NORTH LINE  
AND 440 FT. FROM THE WEST LINE OF  
SECTION 2, TOWNSHIP 25 SOUTH,  
RANGE 31 EAST, N.M.P.M.  
EDDY COUNTY, STATE OF NEW MEXICO

NOT TO SCALE

NOVEMBER 24, 2010

SURVEY NO. 333

MADRON SURVEYING, INC. 301 SOUTH CANAL (575) 887-5830 CARLSBAD, NEW MEXICO