

DISTRICT I
1625 N. FRENCH DR., HOBBS, NM 88240
DISTRICT II
1301 W. GRAND AVENUE, ARTESIA, NM 88210
DISTRICT III
1000 RIO BRAZOS RD., AZTEC, NM 87410
DISTRICT IV
11885 S. ST. FRANCIS DR., SANTA FE, NM 87505

State of New Mexico
Energy, Minerals & Natural Resources Department
OIL CONSERVATION DIVISION
1220 South St. Francis Dr.
Santa Fe, New Mexico 87505

PL
Form C-102
Revised July 16, 2010
Submit to Appropriate
District Office

☐ AMENDED REPORT

WELL LOCATION AND ACREAGE DEDICATION PLAT

As Drilled

| | | |
|-----------------------------------|--|---|
| API Number 30-015-39836 | Pool Code 96831 | Pool Name Cedar Lake; Glorieta - Yeso |
| Property Code 308738 | Property Name TONY FEDERAL | Well Number 036 |
| OGRID No. 873 | Operator Name APACHE CORPORATION | Elevation 3629' |

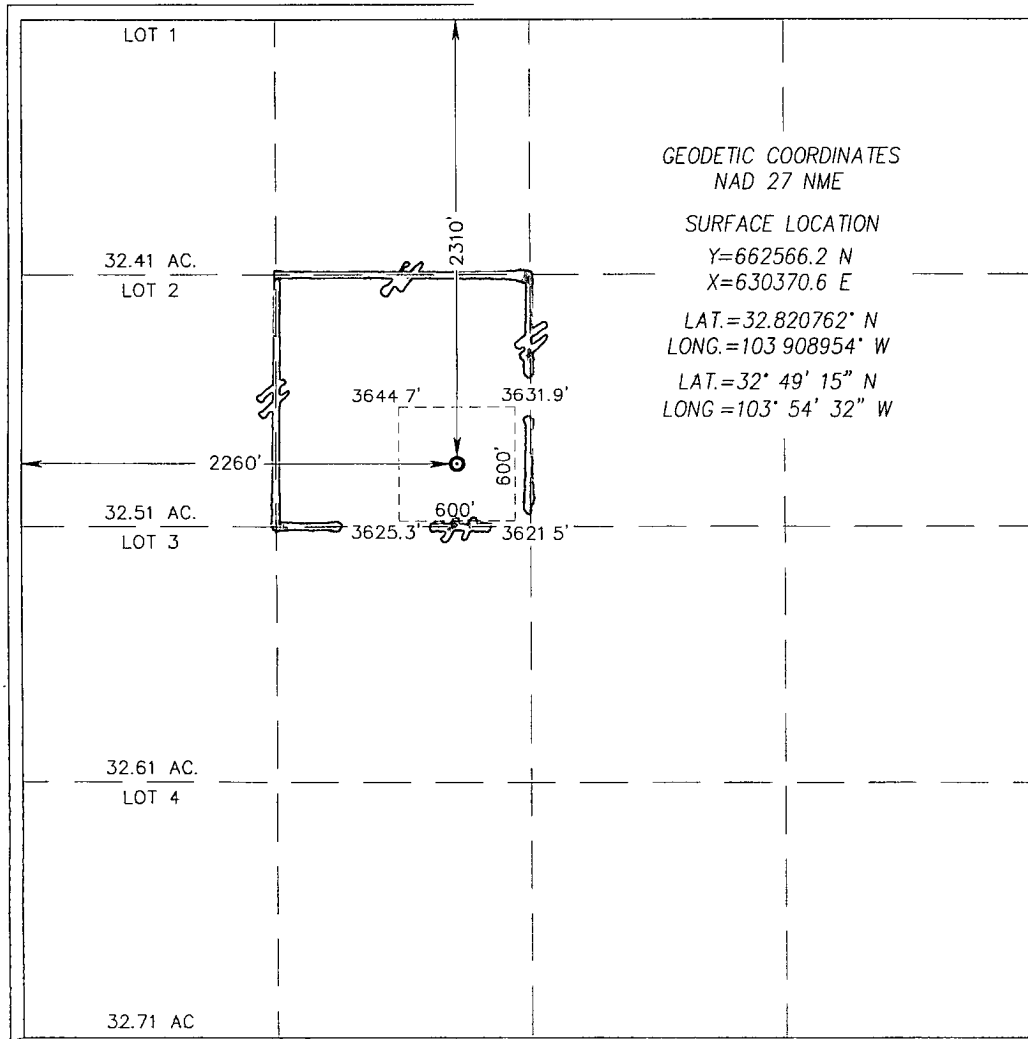
Surface Location

| UL or lot No. | Section | Township | Range | Lot Idn | Feet from the | North/South line | Feet from the | East/West line | County |
|---------------|---------|----------|-------|---------|---------------|------------------|---------------|----------------|--------|
| F | 19 | 17-S | 31-E | | 2310 | NORTH | 2260 | WEST | EDDY |

Bottom Hole Location If Different From Surface

| UL or lot No. | Section | Township | Range | Lot Idn | Feet from the | North/South line | Feet from the | East/West line | County |
|------------------------------|-----------------|--------------------|-----------|---------|---------------|------------------|---------------|----------------|--------|
| | | | | | | | | | |
| Dedicated Acres 40 | Joint or Infill | Consolidation Code | Order No. | | | | | | |

NO ALLOWABLE WILL BE ASSIGNED TO THIS COMPLETION UNTIL ALL INTERESTS HAVE BEEN CONSOLIDATED OR A NON-STANDARD UNIT HAS BEEN APPROVED BY THE DIVISION



OPERATOR CERTIFICATION

I hereby certify that the information herein is true and complete to the best of my knowledge and belief, and that this organization either owns a working interest or unleased mineral interest in the land including the proposed bottom hole location or has a right to drill this well at this location pursuant to a contract with an owner of such mineral or working interest, or to a voluntary pooling agreement or a compulsory pooling order heretofore entered by the division

[Signature] 10/25/12
Signature Date

Fatima Vasquez
Printed Name

Fatima.Vasquez@apachecorp.
E-mail Address

SURVEYOR CERTIFICATION

I hereby certify that the well location shown on this plat was plotted from field notes of actual surveys made by me or under my supervision, and that the same is true and correct to the best of my belief.

MARCH 29, 2011

Date of Survey
Signature & Seal of Professional Surveyor:

RONALD J. EIDSON
NEW MEXICO
3239
Certificate Number 12641
Professional Surveyor
DSS JWSC W.O. 11.11.0577