

UNITED STATES  
DEPARTMENT OF THE INTERIOR  
BUREAU OF LAND MANAGEMENT

OCD Artesia

FORM APPROVED  
OMB NO 1004-0135  
Expires: July 31, 2010**SUNDRY NOTICES AND REPORTS ON WELLS**  
*Do not use this form for proposals to drill or to re-enter an abandoned well. Use form 3160-3 (APD) for such proposals.***SUBMIT IN TRIPLICATE - Other instructions on reverse side.**

1. Type of Well <input checked="" type="checkbox"/> Oil Well <input type="checkbox"/> Gas Well <input type="checkbox"/> Other		5. Lease Serial No. NMNM7724
2. Name of Operator APACHE CORPORATION		6. If Indian, Allottee or Tribe Name
3a. Address 303 VETERANS AIRPARK LN #3000 MIDLAND, TX 79705		7. If Unit or CA/Agreement, Name and/or No.
3b. Phone No (include area code) Ph: 432-818-1167 Fax: 432-818-1193		8. Well Name and No. COLORADO 19 FEDERAL 1
4. Location of Well (Footage, Sec., T., R., M., or Survey Description) Sec 19 T16S R30E 1650FSL 330FEL 32.904235 N Lat, 104.003356 W Lon		9. API Well No. 30-015-40479
		10. Field and Pool, or Exploratory YESO
		11. County or Parish, and State EDDY COUNTY, NM

**12. CHECK APPROPRIATE BOX(ES) TO INDICATE NATURE OF NOTICE, REPORT, OR OTHER DATA**

TYPE OF SUBMISSION	TYPE OF ACTION			
<input checked="" type="checkbox"/> Notice of Intent	<input type="checkbox"/> Acidize	<input type="checkbox"/> Deepen	<input type="checkbox"/> Production (Start/Resume)	<input type="checkbox"/> Water Shut-Off
<input type="checkbox"/> Subsequent Report	<input type="checkbox"/> Alter Casing	<input type="checkbox"/> Fracture Treat	<input type="checkbox"/> Reclamation	<input type="checkbox"/> Well Integrity
<input type="checkbox"/> Final Abandonment Notice	<input type="checkbox"/> Casing Repair	<input type="checkbox"/> New Construction	<input type="checkbox"/> Recomplete	<input checked="" type="checkbox"/> Other
	<input type="checkbox"/> Change Plans	<input type="checkbox"/> Plug and Abandon	<input type="checkbox"/> Temporarily Abandon	Change to Original A
	<input type="checkbox"/> Convert to Injection	<input type="checkbox"/> Plug Back	<input type="checkbox"/> Water Disposal	PD

13. Describe Proposed or Completed Operation (clearly state all pertinent details, including estimated starting date of any proposed work and approximate duration thereof. If the proposal is to deepen directionally or recompleat horizontally, give subsurface locations and measured and true vertical depths of all pertinent markers and zones. Attach the Bond under which the work will be performed or provide the Bond No. on file with BLM/BIA. Required subsequent reports shall be filed within 30 days following completion of the involved operations. If the operation results in a multiple completion or recompleat in a new interval, a Form 3160-4 shall be filed once testing has been completed. Final Abandonment Notices shall be filed only after all requirements, including reclamation, have been completed, and the operator has determined that the site is ready for final inspection.)

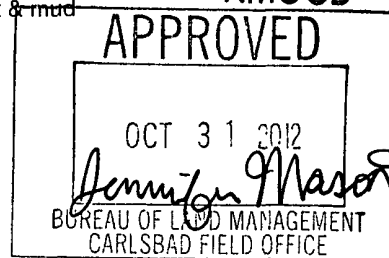
BOND#: BLM-CO-1463 / NMB000736

Apache proposes to change well from horizontal to vertical. Below is change in csg, cmt &amp; mud program:

Proposed Csg:

Hole	Depth	OD Csg	Wt	Collar	Grade	Collapse	Burst	Tension
11	0-340'	8-5/8"	24#	STC	J55	1.0	1.21	1.8
7-7/8"	0-5550'	5-1/2"	17#	STC	J55	1.0	1.21	1.8

Proposed Cmt:

**SEE ATTACHED FOR  
CONDITIONS OF APPROVAL**Accepted for record  
NMOCDTES  
11/5/2012

14. Thereby certify that the foregoing is true and correct.		<b>RECEIVED</b> NOV 01 2012 NMOCD ARTESIA
Electronic Submission #154817 verified by the BLM Well Information System For APACHE CORPORATION, sent to the Carlsbad Committed to AFMSS for processing by KURT SIMMONS on 10/22/2012 ( )		
Name (Printed/Typed) SORINA L FLORES	Title SUPV DRLG SERVICES	
Signature (Electronic Submission)	Date 10/15/2012	

**THIS SPACE FOR FEDERAL OR STATE OFFICE USE**

Approved By	Title	Date
Conditions of approval, if any, are attached. Approval of this notice does not warrant or certify that the applicant holds legal or equitable title to those rights in the subject lease which would entitle the applicant to conduct operations thereon.		Office

Title 18 U.S.C. Section 1001 and Title 43 U.S.C. Section 1212, make it a crime for any person knowingly and willfully to make to any department or agency of the United States any false, fictitious or fraudulent statements or representations as to any matter within its jurisdiction.

**\*\* OPERATOR-SUBMITTED \*\* OPERATOR-SUBMITTED \*\* OPERATOR-SUBMITTED \*\***

## Additional data for EC transaction #154817 that would not fit on the form

### 32. Additional remarks, continued

8-5/8" Surf (100% excess, cmt to surf)  
Lead: 200sx CI C w/0.25% Defoamer (14.8wt, 1.33yld)  
Comp Strength: 12hr - 813psi 24hr - 1205psi

5-1/2" Prod (35% excess, cmt to surf)  
Lead: 200sx CI H 50/50 w/10% Gel + 2# Star seal + 0.25% Defoamer  
(11.9wt, 2.24yld)  
Tail: 655sx CI C w/1% CaCl + 0.25% Defoamer (14.8wt, 1.34yld)  
Comp Strength: 12hr - 813psi 24hr - 1205psi

#### Proposed Mud Program:

Interval	MWppg	Visc(sec/qt)	Fluid Loss (cc)	Mud Type
0-340'	8.6-8.8	20-30	NC	FW
340-5550'	9.5-10.2	28-36	NC	Brine/Cut Brine

**DISTRICT I**  
1625 N. French Dr., Hobbs, NM 88240  
Phone: (575) 393-6161 Fax: (575) 393-0720

**DISTRICT II**  
811 S. First St., Artesia, NM 88210  
Phone: (575) 748-1283 Fax: (575) 748-9720

**DISTRICT III**  
1000 Rio Brazos Road, Aztec, NM 87410  
Phone: (505) 334-6178 Fax: (505) 334-6170

**DISTRICT IV**  
1220 S. St. Francis Dr., Santa Fe, NM 87505  
Phone: (505) 476-3460 Fax: (505) 476-3462

State of New Mexico  
Energy, Minerals & Natural Resources Department  
**OIL CONSERVATION DIVISION**  
1220 South St. Francis Dr.  
Santa Fe, New Mexico 87505

Form C-102  
Revised August 1, 2011  
Submit one copy to appropriate  
District Office

☐ AMENDED REPORT

**WELL LOCATION AND ACREAGE DEDICATION PLAT**

API Number <b>30-015-</b>	Pool Code <b>96718</b>	Pool Name <b>Loco Hills, Glorieta - Yeso</b>
Property Code <b>39.331</b>	Property Name <b>COLORADO 19 FEDERAL</b>	Well Number <b>1</b>
OGRID No. <b>873</b>	Operator Name <b>APACHE CORPORATION</b>	Elevation <b>3753</b>

**Surface Location**

UL or lot No.	Section	Township	Range	Lot Idn	Feet from the	North/South line	Feet from the	East/West line	County
<b>I</b>	<b>19</b>	<b>16-S</b>	<b>30-E</b>		<b>1650'</b>	<b>SOUTH</b>	<b>330'</b>	<b>EAST</b>	<b>EDDY</b>

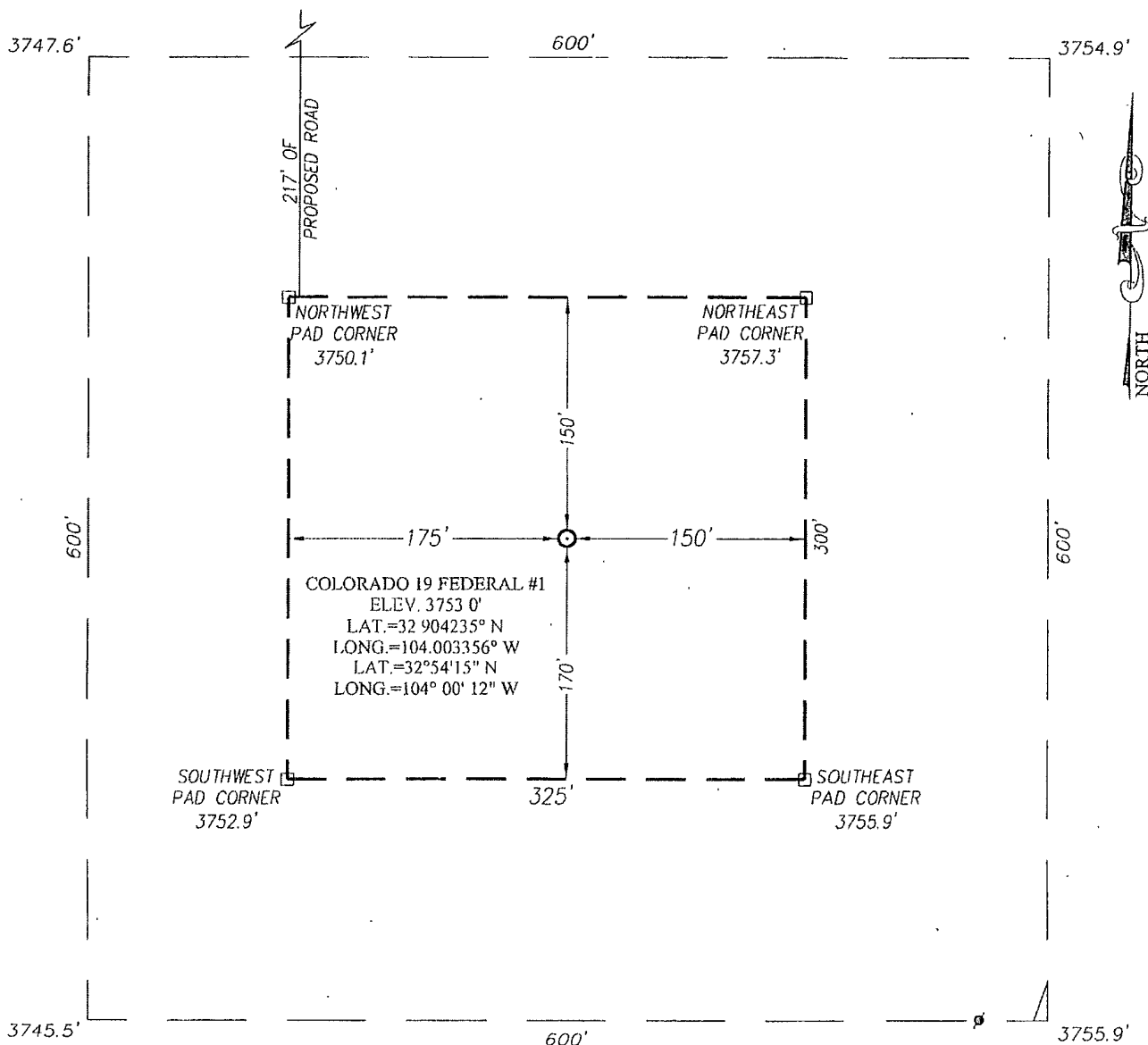
**Bottom Hole Location If Different From Surface**

UL or lot No.	Section	Township	Range	Lot Idn	Feet from the	North/South line	Feet from the	East/West line	County
Dedicated Acres <b>40</b>		Joint or Infill	Consolidation Code		Order No.				

NO ALLOWABLE WILL BE ASSIGNED TO THIS COMPLETION UNTIL ALL INTERESTS HAVE BEEN CONSOLIDATED OR A NON-STANDARD UNIT HAS BEEN APPROVED BY THE DIVISION

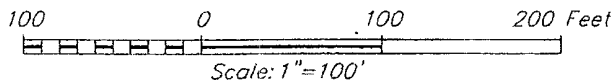
LOT 1 36.45 AC.	<p>GEODETIC COORDINATES NAD 27 NME SURFACE LOCATION Y=692817.4 N X=596769.6 E LAT.=32.904235° N LONG.=104.003356° W LAT.=32° 54' 15" N LONG.=104° 00' 12" W</p>		<p><b>OPERATOR CERTIFICATION</b> I hereby certify that the information herein is true and complete to the best of my knowledge and belief, and that this organization either owns a working interest or unleased mineral interest in the land including the proposed bottom hole location or has a right to drill this well at this location pursuant to a contract with an owner of such mineral or working interest, or to a voluntary pooling agreement or a compulsory pooling order heretofore entered by the division.</p> <p><i>Sorina L. Flores</i> 7/15/12 Signature Date <b>Sorina L. Flores</b> Printed Name <b>sorina.flores@apachecorp.com</b> E-mail Address</p>
LOT 2 36.46 AC.			<p>I hereby certify that the well location shown on this plat was plotted from field notes of actual surveys made by me or under my supervision, and that the same is true and correct to the best of my belief.</p> <p>JULY 15, 2011 Date of Survey <b>RONALD J. EIDSON</b> Signature &amp; Seal of Professional Surveyor:  Certificate Number <b>3239</b> AF JWSC W.O. 12 13 1725</p>
LOT 3 36.48 AC.			
LOT 4 36.49 AC.			

**SECTION 30, TOWNSHIP 16 SOUTH, RANGE 30 EAST, N.M.P.M.**  
**EDDY COUNTY** **NEW MEXICO**



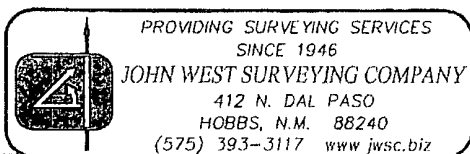
**DIRECTIONS TO LOCATION**

FROM THE INTERSECTION OF U.S. HWY. 82 AND CR 217, GO 7.5 MILES NORTH ON CR 217. TURN LEFT AND GO WEST 1.4 MILES. TURN LEFT AND GO SOUTH 1.10 MILES TO A WELL PAD. EXIT THE PAD AT THE SE CORNER AND GO SOUTH 0.1 MILE. TURN LEFT AND GO EAST 0.2 MILES. TURN RIGHT AND GO SOUTH 0.6 MILE. TURN LEFT AND GO EAST 0.1 MILE. FOLLOW THE SURVEY STAKES 217' TO LOCATION.



**APACHE CORPORATION**

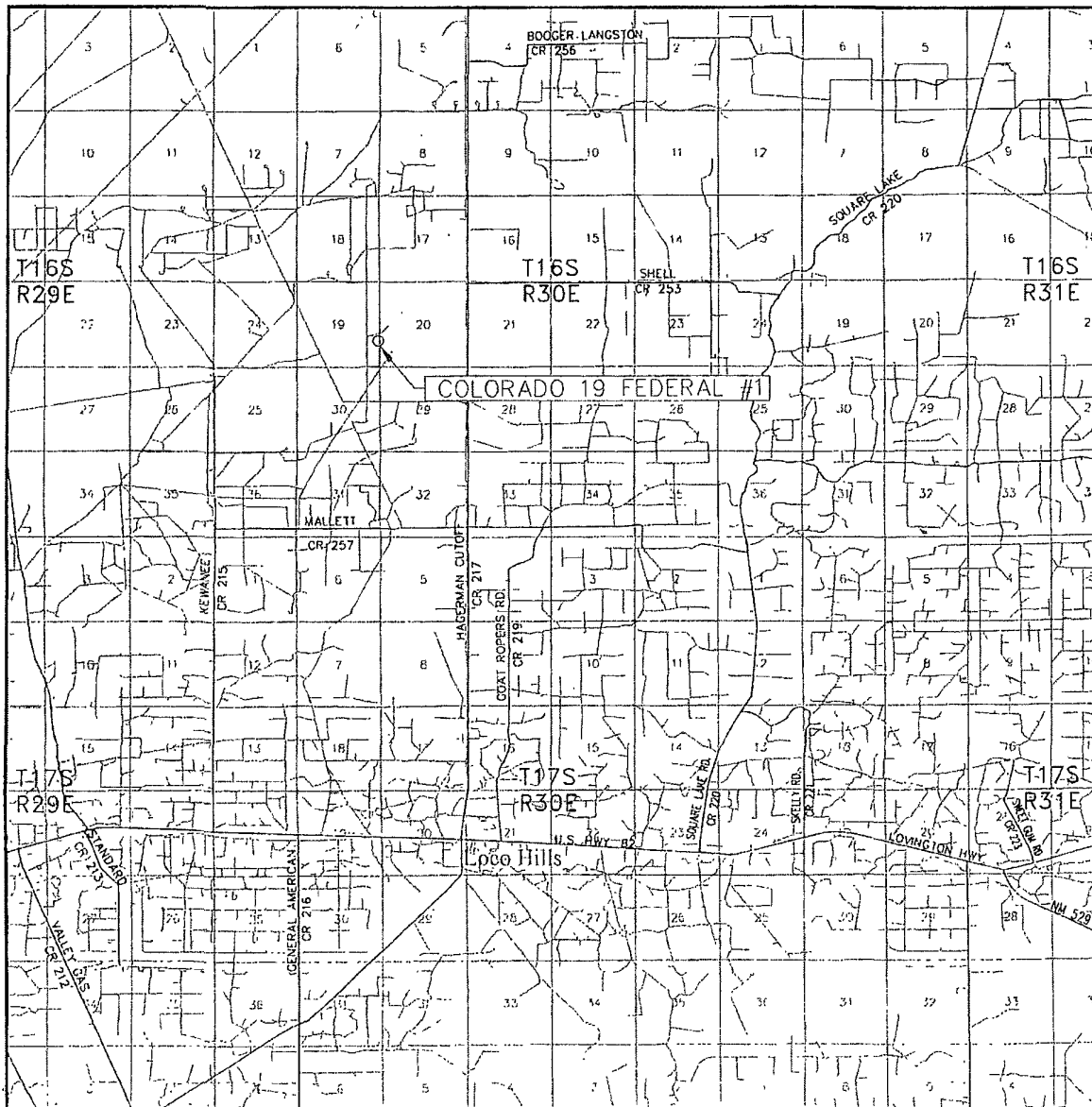
**COLORADO 19 FEDERAL #1 WELL**  
**LOCATED 1650 FEET FROM THE SOUTH LINE**  
**AND 330 FEET FROM THE EAST LINE OF SECTION 19,**  
**TOWNSHIP 16 SOUTH, RANGE 30 EAST, N.M.P.M.,**  
**EDDY COUNTY, NEW MEXICO**



Survey Date: 6/15/11	CAD Date: 10/10/12	Drawn By: AF
W O No: 12131725	Rev. .	Rel. W.O.: 11111309

Sheet 1 of 1

# VICINITY MAP



SCALE: 1" = 2 MILES

SEC. 19 TWP. 16-S RGE. 30-E

SURVEY N.M.P.M.

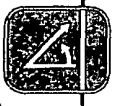
COUNTY EDDY STATE NEW MEXICO

DESCRIPTION 1650' FSL & 330' FEL

ELEVATION 3753

OPERATOR APACHE CORPORATION

LEASE COLORADO 19 FEDERAL

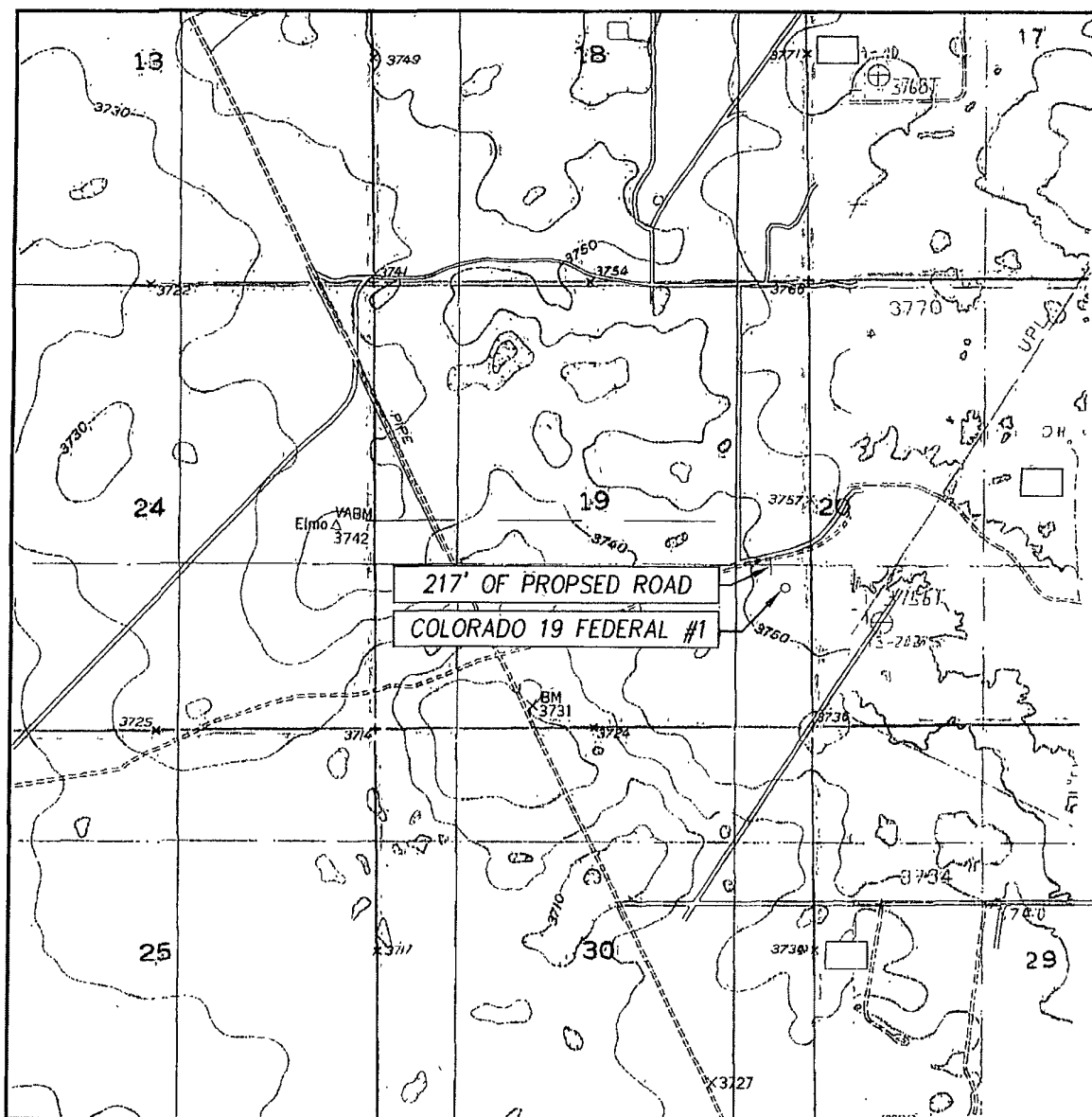


PROVIDING SURVEYING SERVICES  
SINCE 1946

**JOHN WEST SURVEYING COMPANY**

412 N. DAL PASO  
HOBBS, N.M. 88240  
(575) 393-3117

# LOCATION VERIFICATION MAP



SCALE: 1" = 2000'

CONTOUR INTERVAL: 10'  
HENSHAW TANK, NM  
BASIN WELLS, NM

SEC. 19 TWP. 16-S RGE. 30-E

SURVEY N.M.P.M.

COUNTY EDDY STATE NEW MEXICO

DESCRIPTION 1650' FSL & 330' FEL

ELEVATION 3753

OPERATOR APACHE CORPORATION

LEASE COLORADO 19 FEDERAL

U.S.G.S. TOPOGRAPHIC MAP  
HENSHAW TANK AND BASIN WELL, NM

PROVIDING SURVEYING SERVICES  
SINCE 1946  
**JOHN WEST SURVEYING COMPANY**  
412 N. DAL PASO  
HOBBS, N.M. 88240  
(575) 393-3117

DRILLING PLAN: BLM COMPLIANCE  
(Supplement to BLM 3160-3)

APACHE CORPORATION (OGRID: 873) COLORADO 19 FEDERAL #1

Lease #: NMNM-007724 Projected TD: 5500' GL: 3753'  
SHL: 1650' FSL & 330' FEL UL: I SEC: 19 T16S R30E EDDY COUNTY, NM

1. GEOLOGIC NAME OF SURFACE FORMATION: Eolian/Piedmont Alluvial Deposits
2. ESTIMATED TOPS OF GEOLOGICAL MARKERS & DEPTHS OF ANTICIPATED FRESH WATER, OIL OR GAS:

Rustler	335'	Grayburg	2378' (Oil)
Salt Top	584'	San Andres	2754' (Oil)
Salt Bottom	1048'	Glorieta	4200' (Oil)
Yates	1196'	Yeso	4266' (Oil)
Seven Rivers	1426' (Oil)		
Queen	1961' (Oil)	TD	5500'

Depth to Ground Water: ~ 91'

Fresh water & prospectively valuable minerals, as described by BLM, encountered during drilling, will be recorded by depth & adequately protected. All oil & gas shows within zones of correlative rights will be tested to determine commercial potential. Surface fresh water sands will be protected by setting 8-5/8" csg @ 340' & circ cmt back to surface. All intervals will be isolated by setting 5-1/2" csg to TD & circ cmt to surface.

3. CASING PROGRAM: All casing is new & API approved

HOLE SIZE	DEPTH	OD CSG	WEIGHT	COLLAR	GRADE	COLLAPSE	BURST	TENSION
11"	0-400' <del>340</del>	8-5/8"	24#	STC	J-55	1.0	1.21	1.8
7-7/8"	0-5550'	5-1/2"	17#	STC	J-55	1.0	1.21	1.8

4. CEMENT PROGRAM:

- A. 8-5/8" Surface: \*\*100% excess cmt; cmt to surface\*\*

Lead: 200 sx Cl C w/ 0.25% Defoamer (14.8 wt, 1.33 yld)

Compressive Strengths: 12 hr - 813 psi 24 hr - 1205 psi

- B. 5-1/2" Production: \*\*35% excess cmt; cmt to surface\*\*

Lead: 200 sx Cl H 50/50 w/10% Gel + 2# Star seal + 0.25% Defoamer (11.9 wt, 2.24 yld)

Compressive Strengths: 12 hr - 540 psi 24 hr - 866 psi

Tail: 655 sx Cl C w/1% CaCl + 0.25% Defoamer (14.8 wt, 1.34 yld)

Compressive Strengths: 12 hr - 813 psi 24 hr - 1205 psi

\*\* The above cmt volumes could be revised pending caliper measurement from open hole logs. For Surface csg: If cmt does not circ to surface, the appropriate BLM office shall be notified & TOC shall be determined as directed by the BLM for the specific set of circumstances. If depth is greater than 100' or water is standing in the annulus, remedial cementing will be done. If no water & TOC tag is less than 100', when 100% excess cmt of the annulus volume is run on the primary job, ready-mix will be used to bring cmt to surface.

5. PROPOSED CONTROL EQUIPMENT

"EXHIBIT 3" shows an 11" 3M psi WP BOP consisting of an annular bag type preventer, middle blind rams, bottom pipe rams. This BOP will be nipped up on the 8-5/8" surface csg and utilized continuously until TD is reached. The BOP will be tested at 2000 psi (maximum surface pressure is not expected to exceed 2M psi). BHP is calculated to be approximately 2442 psi. \*All BOP's and associated equipment will be tested as per BLM Drilling Operations Order #2. The BOP will be operated and checked each 24 hr period & the blind rams will be operated & checked when the drill pipe is out of the hole. Functional tests will be documented on the daily driller's log. "EXHIBIT 3" also shows a 3M psi choke manifold with a 3" blow down line. Full opening stabbing valve & Kelly cock will be on derrick floor in case of need. No abnormal pressures or temperatures are expected in this well. No nearby wells have encountered any problems.

## 6. PROPOSED MUD CIRCULATION SYSTEM: (Closed Loop System)

INTERVAL	MW (ppg)	VISC (sec/qt)	FLUID LOSS (cc)	MUD TYPE
0' - 400'	8.6 - 8.8	20-30	NC	FW
400-5550'	9.8 - 10.2	28-36	NC	Brine

**\*\* The necessary mud products for weight addition and fluid loss control will be on location at all times. In order to run open hole logs & casing, the above mud properties may have to be altered to meet these needs.**

## 7. AUXILIARY WELL CONTROL EQUIPMENT / MONITORING EQUIPMENT:

11" x 3000 psi Double BOP/Blind & pipe ram (3M BOP/BOPE to be used as 2M system)  
4-1/2" x 3000 psi Kelly valve  
11" x 3000 psi mud cross – H<sub>2</sub>S detector on production hole  
Gate-type safety valve 3" choke line from BOP to manifold  
2" adjustable chokes – 3" blow down line  
Fill up line as per Onshore Order 2

## 8. LOGGING, CORING & TESTING PROGRAM:

- A. OH logs: Dual Laterolog, MSFL, CNL, Litho-Density, Gamma Ray, Caliper & Sonic from TD back to 8-5/8" csg shoe.
- B. Run CNL, Gamma Ray from 8-5/8" csg shoe back to surface.
- C. No cores, DST's or mud logger are planned at this time.
- D. Additional testing will be initiated subsequent to setting the 5-1/2" production casing. Specific intervals will be targeted based on log evaluation, geological sample shows & drill stem tests.

## 9. POTENTIAL HAZARDS:

No abnormal pressures or temperatures are anticipated. In the event abnormal pressures are encountered, however, the proposed mud program will be modified to increase the mud-weight. There is known presence of H<sub>2</sub>S in this area. If H<sub>2</sub>S is encountered the operator will comply with the provisions of *Onshore Oil & Gas Order No. 6*. No lost circulation is expected to occur. All personnel will be familiar with all aspects of safe operation of equipment being used to drill this well. Estimated BHP: 2442 psi and estimated BHT: 115°.

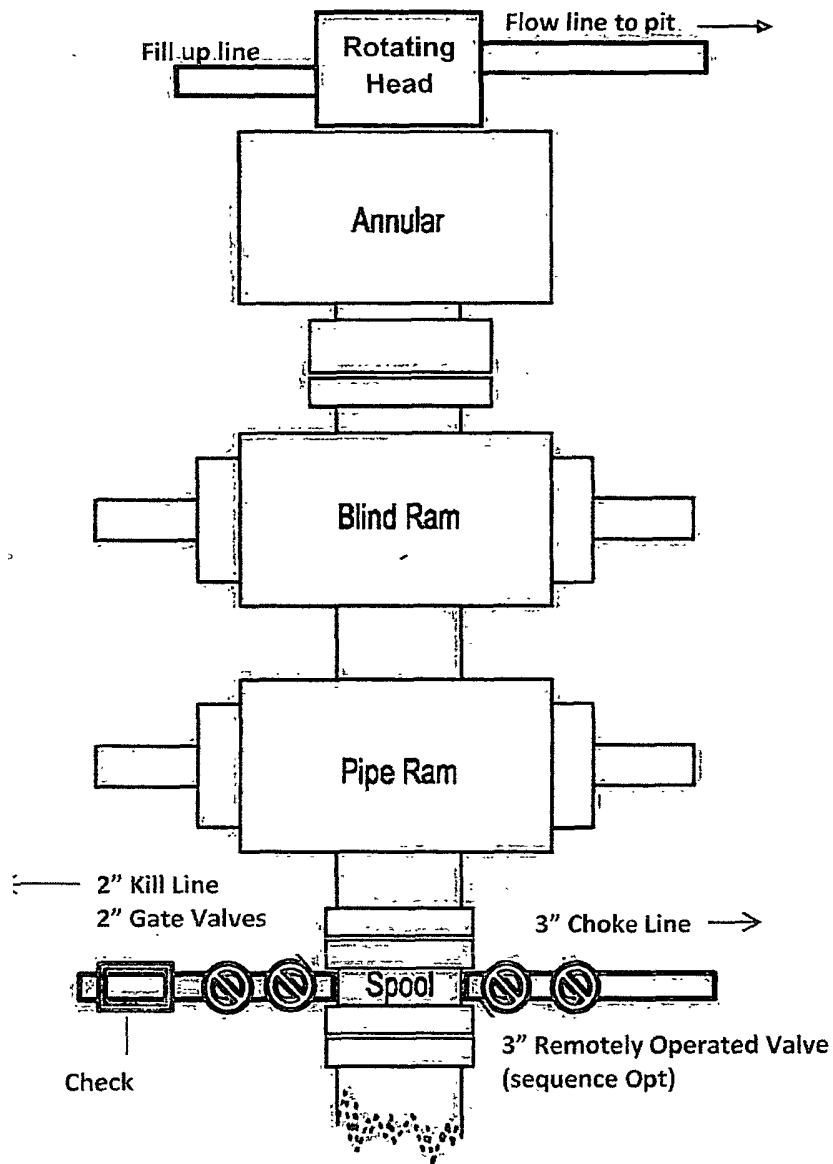
## 10. ANTICIPATED STARTING DATE AND DURATION OF OPERATIONS:

Road and location construction will begin after & BLM has approved APD. Anticipated spud date will be as soon after Santa Fe and BLM approval and as soon as rig will be available. Move in operations and drilling is expected to take ~10 days. If production casing is run then an additional 90 days will be needed to complete well and construct surface facilities and/or lay flow lines in order to place well on production.

## 11. OTHER FACETS OF OPERATION:

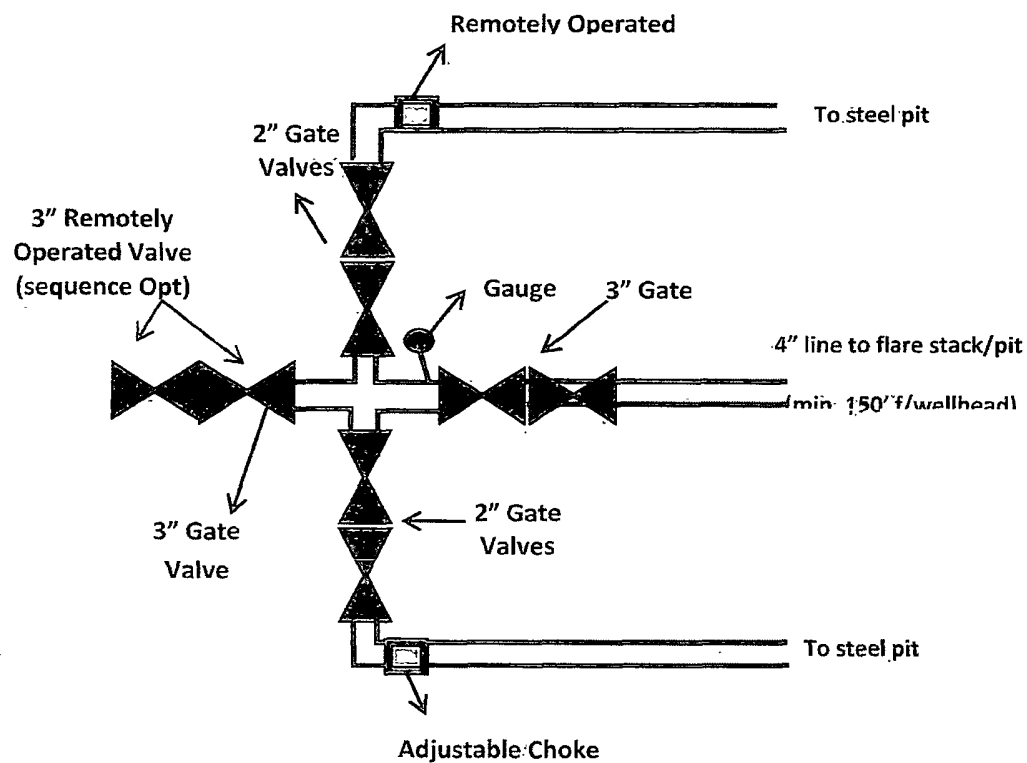
After running csg, cased hole Gamma Ray, Neutron Collar logs will be run from TD back to all possible productive zones. The Loco Hills; Glorieta-Yeso formation will be perforated and stimulated in order to establish production. The well will be swab tested & potentialized as an oil well.





# **11" 3M psi BOPE & Choke Manifold EXHIBIT 3**

All valve & lines on choke manifold are 2" unless noted.  
Exact manifold configuration may vary



## CONDITIONS OF APPROVAL

OPERATOR'S NAME:	Apache Corporation
LEASE NO.:	NM-7724
WELL NAME & NO.:	Colorado 19 Federal #1H
SURFACE HOLE FOOTAGE:	1650' FSL & 330' FEL
LOCATION:	Section 19, T.16 S., R.30 E., NMPM
COUNTY:	Eddy County, New Mexico

### I. DRILLING

#### A. DRILLING OPERATIONS REQUIREMENTS

The BLM is to be notified a minimum of 4 hours in advance for a representative to witness:

- a. Spudding well
- b. Setting and/or Cementing of all casing strings
- c. BOPE tests

☒ **Eddy County**

Call the Carlsbad Field Office, 620 East Greene St., Carlsbad, NM 88220,  
(575) 361-2822

1. **Although Hydrogen Sulfide has not been reported in the area, it is always a potential hazard. If Hydrogen Sulfide is encountered, please report measured amounts and formations to the BLM.**
2. Unless the production casing has been run and cemented or the well has been properly plugged, the drilling rig shall not be removed from over the hole without prior approval. **If the drilling rig is removed without approval – an Incident of Non-Compliance will be written and will be a “Major” violation.**
3. **The record of the drilling rate along with the GR/N well log run from TD to surface (horizontal well – vertical portion of hole) shall be submitted to the BLM office as well as all other logs run on the borehole 30 days from completion. If available, a digital copy of the logs is to be submitted in addition to the paper copies. The Rustler top and top and bottom of Salt are to be recorded on the Completion Report.**

#### B. CASING

**Changes to the approved APD casing program need prior approval if the items substituted are of lesser grade or different casing size. The Operator can exchange the components of the proposal with that of superior strength (i.e. changing from J-**

55 to N-80, or from 36# to 40#). Changes to the approved cement program need prior approval if the altered cement plan has less volume or strength or if the changes are substantial (i.e. Multistage tool, ECP, etc.).

**Centralizers required on surface casing per Onshore Order 2.III.B.1.f.**

**Wait on cement (WOC) time prior to drilling out for a primary cement job will be a minimum 18 hours for a water basin, 24 hours in the potash area, or 500 pounds compressive strength, whichever is greater for all casing strings. DURING THIS WOC TIME, NO DRILL PIPE, ETC. SHALL BE RUN IN THE HOLE. Provide compressive strengths including hours to reach required 500 pounds compressive strength prior to cementing each casing string. See individual casing strings for details regarding lead cement slurry requirements.**

**No pea gravel permitted for remedial or fall back remedial without prior authorization from the BLM engineer.**

**Possible lost circulation in the San Andres Formation.**

1. The 8-5/8 inch surface casing shall be set at **approximately 340 feet (a minimum of 25 feet into the Rustler Anhydrite and above the salt)** and cemented to the surface.
  - a. If cement does not circulate to the surface, the appropriate BLM office shall be notified and a temperature survey utilizing an electronic type temperature survey with surface log readout will be used or a cement bond log shall be run to verify the top of the cement. Temperature survey will be run a minimum of six hours after pumping cement and ideally between 8-10 hours after completing the cement job.
  - b. **Wait on cement (WOC) time for a primary cement job is to include the lead cement slurry.**
  - c. Wait on cement (WOC) time for a remedial job will be a minimum of 4 hours after bringing cement to surface or 500 pounds compressive strength, whichever is greater.
  - d. If cement falls back, remedial cementing will be done prior to drilling out that string.
2. The minimum required fill of cement behind the 5 1/2 inch production casing is:
  - ☒ Cement as proposed (TOC 500' from surface). Operator shall provide method of verification.

3. If hardband drill pipe is rotated inside casing, returns will be monitored for metal. If metal is found in samples, drill pipe will be pulled and rubber protectors which have a larger diameter than the tool joints of the drill pipe will be installed prior to continuing drilling operations.

### C. PRESSURE CONTROL

1. All blowout preventer (BOP) and related equipment (BOPE) shall comply with well control requirements as described in Onshore Oil and Gas Order No. 2 and API RP 53 Sec. 17.
2. Minimum working pressure of the blowout preventer (BOP) and related equipment (BOPE) required for drilling below the surface casing shoe shall be **2000 (2M)** psi.
  - a. **For surface casing only:** If the BOP/BOPE is to be tested against casing, the wait on cement (WOC) time for that casing is to be met (see WOC statement at start of casing section). Independent service company required.
3. The appropriate BLM office shall be notified a minimum of 4 hours in advance for a representative to witness the tests.
  - a. In a water basin, for all casing strings utilizing slips, these are to be set as soon as the crew and rig are ready and any fallback cement remediation has been done. The casing cut-off and BOP installation can be initiated four hours after installing the slips, which will be approximately six hours after bumping the plug. For those casing strings not using slips, the minimum wait time before cut-off is eight hours after bumping the plug. BOP/BOPE testing can begin after cut-off or once cement reaches 500 psi compressive strength (including lead when specified), whichever is greater. However, if the float does not hold, cut-off cannot be initiated until cement reaches 500 psi compressive strength (including lead when specified).
  - b. The tests shall be done by an independent service company utilizing a test plug **not a cup or J-packer**. The operator also has the option of utilizing an independent tester to test without a plug (i.e. against the casing) pursuant to Onshore Order 2 with the pressure not to exceed 70% of the burst rating for the casing. Any test against the casing must meet the WOC time for water basin (18 hours) or potash (24 hours) or 500 pounds compressive strength, whichever is greater, prior to initiating the test (see casing segment as lead cement may be critical item).
  - c. The results of the test shall be reported to the appropriate BLM office.

- d. All tests are required to be recorded on a calibrated test chart. **A copy of the BOP/BOPE test chart and a copy of independent service company test will be submitted to the appropriate BLM office.**
- e. The BOP/BOPE test shall include a low pressure test from 250 to 300 psi. The test will be held for a minimum of 10 minutes if test is done with a test plug and 30 minutes without a test plug.

#### **D. DRILL STEM TEST**

If drill stem tests are performed, Onshore Order 2.III.D shall be followed.

#### **E. WASTE MATERIAL AND FLUIDS**

All waste (i.e. drilling fluids, trash, salts, chemicals, sewage, gray water, etc.) created as a result of drilling operations and completion operations shall be safely contained and disposed of properly at a waste disposal facility. No waste material or fluid shall be disposed of on the well location or surrounding area.

Porto-johns and trash containers will be on-location during fracturing operations or any other crew-intensive operations.

**JAM 103112**