

UNITED STATES
DEPARTMENT OF THE INTERIOR
BUREAU OF LAND MANAGEMENT

OCD Artesia

FORM APPROVED
OMB NO 1004-0135
Expires July 31, 2010**SUNDRY NOTICES AND REPORTS ON WELLS**
*Do not use this form for proposals to drill or to re-enter an abandoned well. Use form 3160-3 (APD) for such proposals.***SUBMIT IN TRIPLICATE - Other instructions on reverse side.**

1. Type of Well <input checked="" type="checkbox"/> Oil Well <input type="checkbox"/> Gas Well <input type="checkbox"/> Other		8 Well Name and No SANTA ELENA 19 FEDERAL 1
2 Name of Operator APACHE CORPORATION Contact SORINA L FLORES E-Mail sorina.flores@apachecorp.com		9 API Well No 30-015-40567
3a Address 303 VETERANS AIRPARK LN #3000 MIDLAND, TX 79705	3b Phone No (include area code) Ph 432-818-1167 Fx 432-818-1193	10 Field and Pool, or Exploratory WILDCAT PAVO Mesa; ABO
4 Location of Well (Footage, Sec., T., R. M. or Survey Description) Sec 19 T16S R30E 1650FNL 330FWL 32 909700 N Lat, 104 018037 W Lon		11 County or Parish, and State EDDY COUNTY, NM

12. CHECK APPROPRIATE BOX(ES) TO INDICATE NATURE OF NOTICE, REPORT, OR OTHER DATA

TYPE OF SUBMISSION	TYPE OF ACTION			
<input checked="" type="checkbox"/> Notice of Intent	<input type="checkbox"/> Acidize	<input type="checkbox"/> Deepen	<input type="checkbox"/> Production (Start/Resume)	<input type="checkbox"/> Water Shut-Off
<input type="checkbox"/> Subsequent Report	<input type="checkbox"/> Alter Casing	<input type="checkbox"/> Fracture Treat	<input type="checkbox"/> Reclamation	<input type="checkbox"/> Well Integrity
<input type="checkbox"/> Final Abandonment Notice	<input type="checkbox"/> Casing Repair	<input type="checkbox"/> New Construction	<input type="checkbox"/> Recomplete	<input checked="" type="checkbox"/> Other
	<input type="checkbox"/> Change Plans	<input type="checkbox"/> Plug and Abandon	<input type="checkbox"/> Temporarily Abandon	Change to Original A PD
	<input type="checkbox"/> Convert to Injection	<input type="checkbox"/> Plug Back	<input type="checkbox"/> Water Disposal	

13 Describe Proposed or Completed Operation (clearly state all pertinent details, including estimated starting date of any proposed work and approximate duration thereof. If the proposal is to deepen directionally or recompleat horizontally, give subsurface locations and measured and true vertical depths of all pertinent markers and zones. Attach the Bond under which the work will be performed or provide the Bond No. on file with BLM/BIA. Required subsequent reports shall be filed within 30 days following completion of the involved operations. If the operation results in a multiple completion or recompleat in a new interval, a Form 3160-4 shall be filed once testing has been completed. Final Abandonment Notices shall be filed only after all requirements, including reclamation, have been completed, and the operator has determined that the site is ready for final inspection.)

BOND# BLM-CO-1463 / NMB000736

APACHE REQUEST TO CHANGE WELL FROM HORIZONTAL TO VERTICAL. ATTACHED PLEASE FIND NEW DRILLING PLAN, C-102 & NEW BOP DIAGRAM

SEE ATTACHED FOR
CONDITIONS OF APPROVAL

RECEIVED

NOV 02 2012

NMOCD ARTESIA

APPROVED

OCT 31 2012

Jennifer Mason
BUREAU OF LAND MANAGEMENT
CARLSBAD FIELD OFFICE

14 I hereby certify that the foregoing is true and correct Electronic Submission #156850 verified by the BLM Well Information System For APACHE CORPORATION, sent to the Carlsbad	
Name (Printed/Typed) SORINA L FLORES	Title SUPV DRLG SERVICES
Signature (Electronic Submission)	Date 10/30/2012

THIS SPACE FOR FEDERAL OR STATE OFFICE USE

Approved By _____	Title _____	Date _____
Conditions of approval, if any, are attached. Approval of this notice does not warrant or certify that the applicant holds legal or equitable title to those rights in the subject lease which would entitle the applicant to conduct operations thereon.		Office _____

Title 18 U.S.C. Section 1001 and Title 43 U.S.C. Section 1212, make it a crime for any person knowingly and willfully to make to any department or agency of the United States any false, fictitious or fraudulent statements or representations as to any matter within its jurisdiction.

**** OPERATOR-SUBMITTED ** OPERATOR-SUBMITTED ** OPERATOR-SUBMITTED ****

Additional data for EC transaction #151629 that would not fit on the form

32. Additional remarks, continued

8-5/8" Surf (100% excess, cmt to surf)
Lead: 200sx CI C w/0.25% Defoamer (14.8wt, 1.33yld)
Comp Strength: 12hr - 813psi 24hr - 1205psi

5-1/2" Prod (35% excess, cmt to surf)
Lead: 200sx CI H 50/50 w/10% Gel + 2# Star seal + 0.25% Defoamer (11.9wt, 2.24yld)
Tail: 655sx CI C w/1% CaCl + 0.25% Defoamer (14.8wt, 1.34yld)
Comp Strength: 12hr - 813psi 24hr - 1205psi

Proposed Mud Program:

Interval	MWppg	Visc(sec/qt)	Fluid Loss (cc)	Mud Type
0-400'	8.6-8.8	28-30	NC	FW
400-5550'	9.5-10.2	28-36	NC	Brine/Cut Brine

DISTRICT I
1625 N. French Dr., Hobbs, NM 88240
Phone: (505) 393-6161 Fax: (505) 393-0720

DISTRICT II
811 S. First St., Artesia, NM 88210
Phone: (505) 748-1283 Fax: (505) 748-9720

DISTRICT III
1000 Rio Bonito Road, Aztec, NM 87410
Phone: (505) 334-6178 Fax: (505) 334-6170

DISTRICT IV
1220 S. St. Francis Dr., Santa Fe, NM 87505
Phone: (505) 476-3460 Fax: (505) 476-3462

State of New Mexico
Energy, Minerals & Natural Resources Department
OIL CONSERVATION DIVISION
1220 South St. Francis Dr.
Santa Fe, New Mexico 87505

Form C-102
Revised August 1, 2011
Submit one copy to appropriate
District Office

AMENDED REPORT

WELL LOCATION AND ACREAGE DEDICATION PLAT

API Number 30-015-40567	Pool Code 97575	Pool Name Wildcat Pavo Mesa ABO
Property Code 39385	Property Name SANTA ELENA 19 FEDERAL	Well Number 1
GRID No. 873	Operator Name APACHE CORPORATION	Elevation 3740'

Surface Location

UL or lot No.	Section	Township	Range	Lot Idn	Feet from the	North/South line	Feet from the	East/West line	County
2	19	16-S	30-E		1650	NORTH	330	WEST	EDDY

Bottom Hole Location If Different From Surface

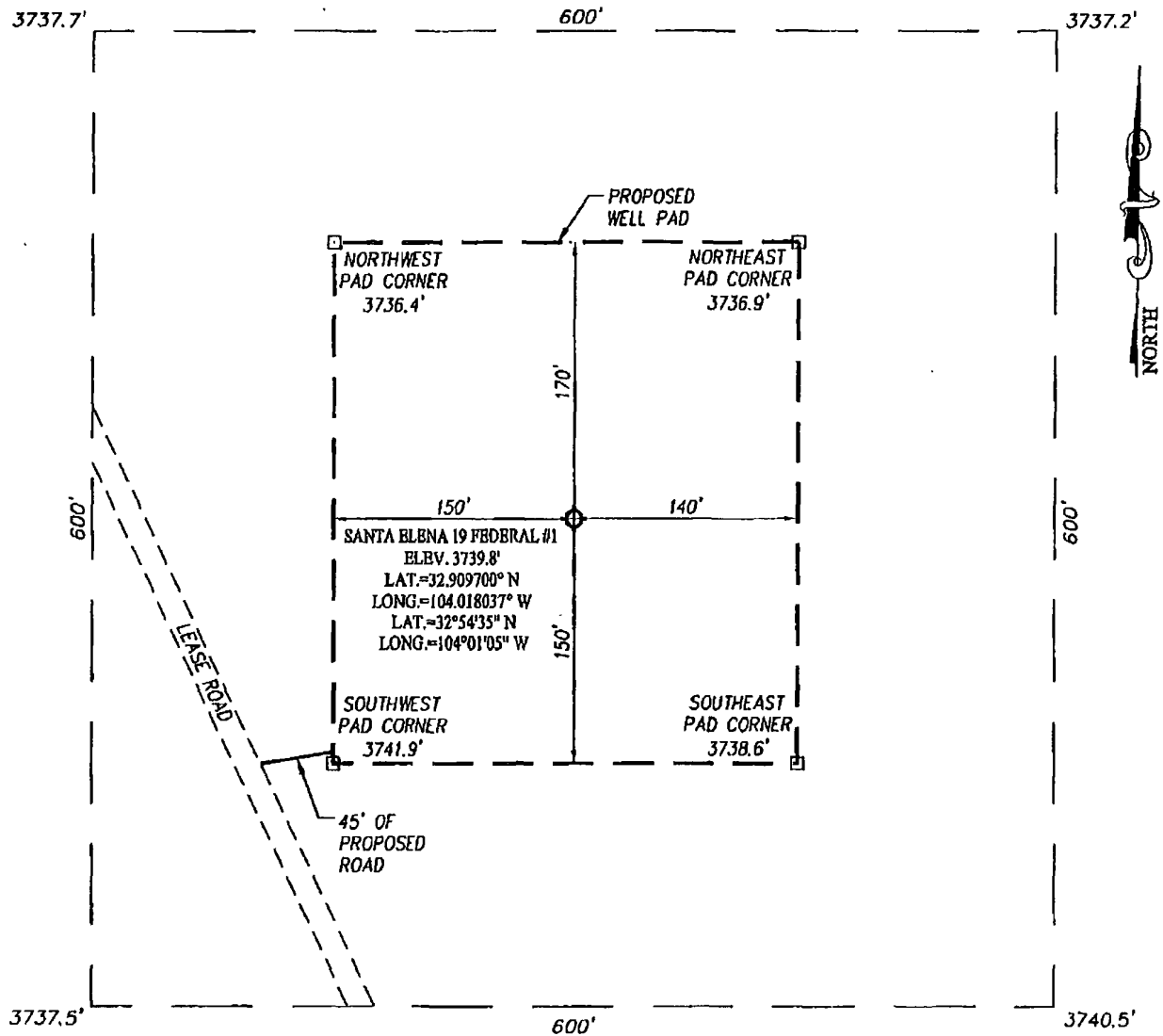
UL or lot No.	Section	Township	Range	Lot Idn	Feet from the	North/South line	Feet from the	East/West line	County

Dedicated Acres 40 36.46	Joint or Infill	Consolidation Code	Order No.
------------------------------------	-----------------	--------------------	-----------

NO ALLOWABLE WILL BE ASSIGNED TO THIS COMPLETION UNTIL ALL INTERESTS HAVE BEEN CONSOLIDATED OR A NON-STANDARD UNIT HAS BEEN APPROVED BY THE DIVISION

<p>LOT 1</p> <p>LOT 2</p> <p>LOT 3</p> <p>LOT 4</p> <p>SEE DETAIL</p> <p>36.45 AC.</p> <p>36.46 AC.</p> <p>36.48 AC.</p> <p>36.49 AC.</p> <p>1650'</p> <p>330'</p> <p>DETAIL</p> <p>3737.7'</p> <p>3737.2'</p> <p>600'</p> <p>3737.5'</p> <p>3740.5'</p> <p>GEODEIC COORDINATES NAD 27 NME</p> <p>SURFACE LOCATION Y=694805.3 N X=596763.1 E</p> <p>LAT.=32.909700° N LONG.=104.018037° W</p> <p>LAT.=32°54'35" N LONG.=104°01'05" W</p>	<p>OPERATOR CERTIFICATION</p> <p>I hereby certify that the information herein is true and complete to the best of my knowledge and belief, and that this organization either owns a working interest or unleased mineral interest in the land including the proposed bottom hole location or has a right to drill this well at this location pursuant to a contract with an owner of such mineral or working interest, or to a voluntary pooling agreement or a compulsory pooling order heretofore entered by the division.</p> <p><i>Sorina L. Flores</i> 10/29/12 Signature Date</p> <p>Sorina L. Flores Printed Name</p> <p><i>sorina.flores@apachecorp.com</i> E-mail Address</p>
	<p>SURVEYOR CERTIFICATION</p> <p>I hereby certify that the well location shown on this plat was plotted from field notes of actual surveys made by me or under my supervision, and that the same is true and correct to the best of my belief.</p> <p>JUNE 22, 2011</p> <p>Date of Survey</p> <p>Signature & Seal of Professional Surveyor:</p> <p><i>Ronald J. Eidson</i> 10/11/2012 Certificate Number Gary C. Eidson 12641 Ronald J. Eidson 3239 AF PROFESSIONAL SURVEYOR W.O.: 12.13.1726</p>

SECTION 19, TOWNSHIP 16 SOUTH, RANGE 30 EAST, N.M.P.M.
EDDY COUNTY **NEW MEXICO**



DIRECTIONS TO LOCATION

FROM THE INTERSECTION OF U.S. HWY. #82 AND CO. RD. #217 (HAGERMAN CUTOFF), GO NORTH ON CO. RD. #217 APPROX. 5.0 MILES. TURN LEFT AND GO WEST APPROX. 1.4 MILES. TURN RIGHT AND GO NORTHWEST APPROX. 1.2 MILES TO A PROPOSED ROAD SURVEY. FOLLOW SURVEY STAKES EAST APPROX. 45 FEET TO THIS LOCATION.

PROVIDING SURVEYING SERVICES
 SINCE 1946
JOHN WEST SURVEYING COMPANY
 412 N. DAL PASO
 HOBBS, N.M. 88240
 (575) 393-3117 www.jwsc.biz

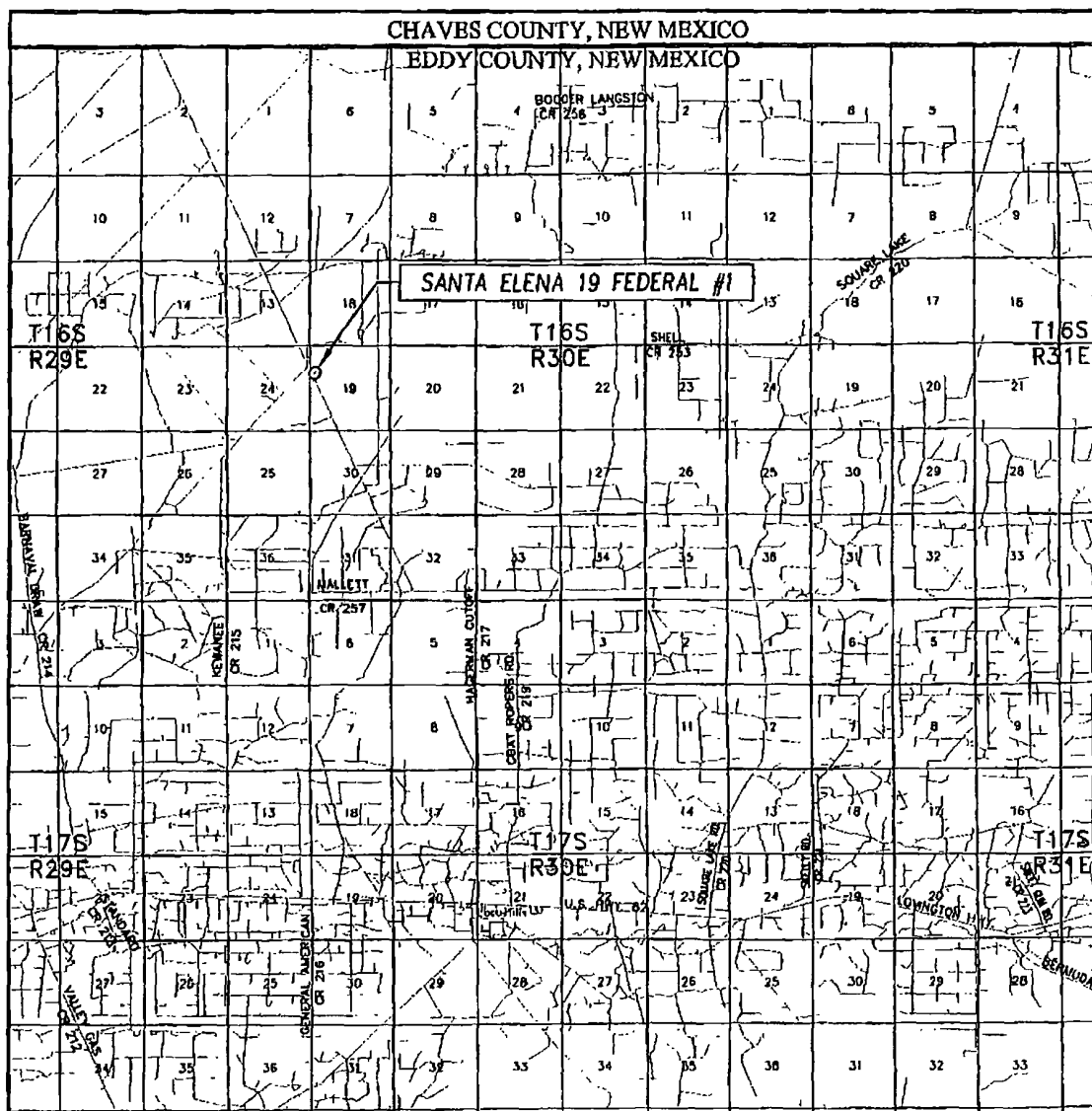
APACHE CORPORATION

SANTA ELENA 19 FEDERAL #1 WELL
 LOCATED 1650 FEET FROM THE NORTH LINE
 AND 330 FEET FROM THE WEST LINE OF SECTION 19,
 TOWNSHIP 16 SOUTH, RANGE 30 EAST, N.M.P.M.,
 EDDY COUNTY, NEW MEXICO

Survey Date: 6/22/11	CAD Date: 10/10/12	Drawn By: AF
W.O. No.: 12131726	Rev. :	Rel. W.O.: 11111361

Sheet 1 of 1

VICINITY MAP



SCALE: 1" = 2 MILES

SEC. 19 TWP. 16-S RGE. 30-E

SURVEY N.M.P.M.

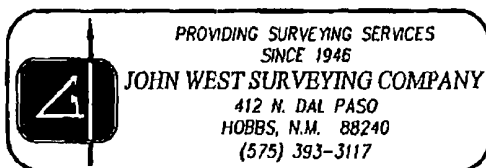
COUNTY EDDY STATE NEW MEXICO

DESCRIPTION 1650' FNL & 330' FWL

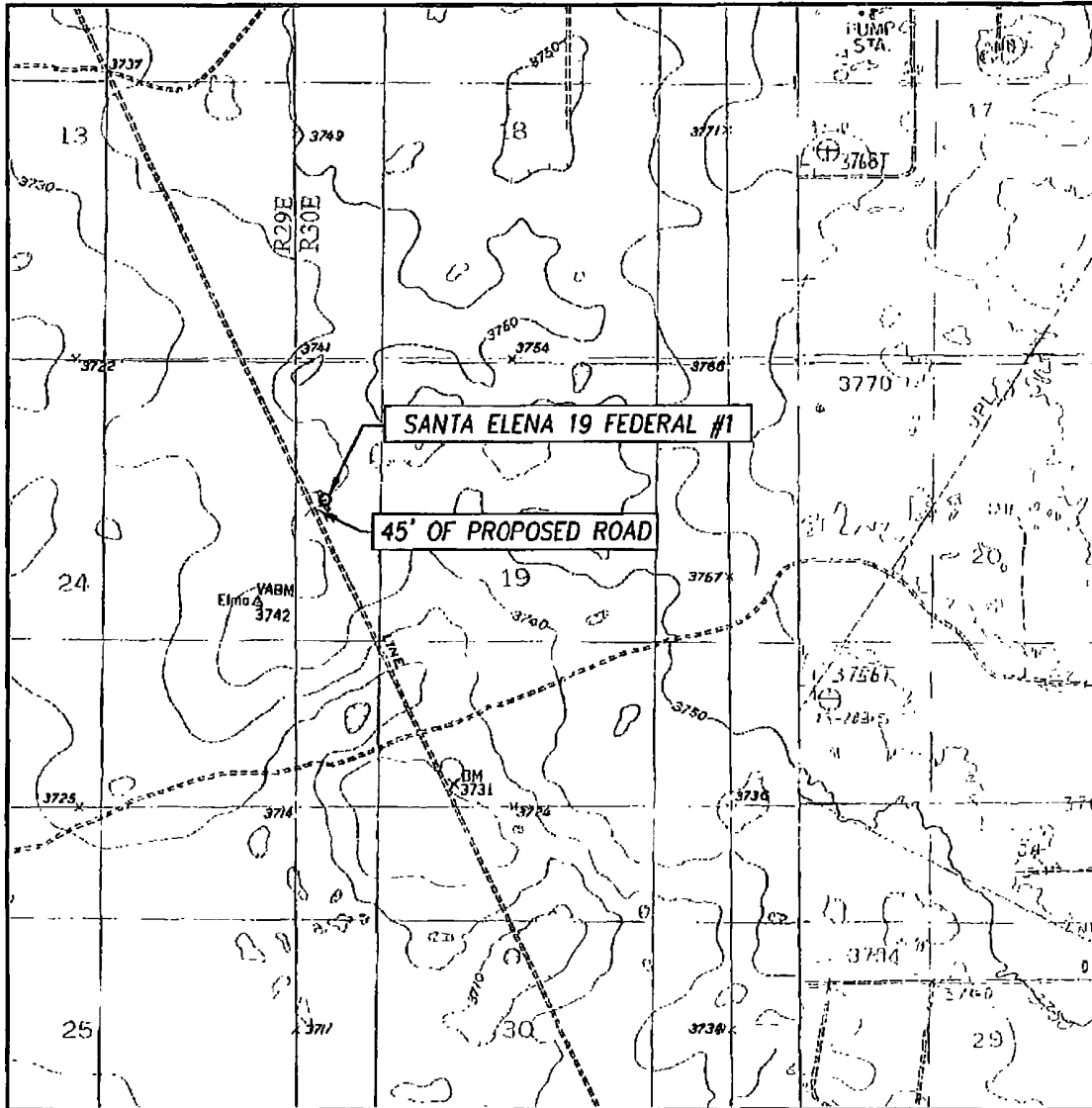
ELEVATION 3740'

OPERATOR APACHE CORPORATION

LEASE SANTA ELENA 19 FEDERAL



LOCATION VERIFICATION MAP



SCALE: 1" = 2000'

CONTOUR INTERVAL:

BASIN WELL, N.M. - 10'

HENSHAW TANK, N.M. - 10'

SEC. 19 TWP. 16-S. RGE. 30-E

SURVEY N.M.P.M.

COUNTY EDDY STATE NEW MEXICO

DESCRIPTION 1650' FNL. & 330' FWL

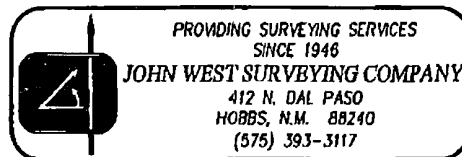
ELEVATION 3740'

OPERATOR APACHE CORPORATION

LEASE SANTA ELENA 19 FEDERAL

U.S.G.S. TOPOGRAPHIC MAP

BASIN WELL, N.M.



DRILLING PLAN: BLM COMPLIANCE
(Supplement to BLM 3160-3)

APACHE CORPORATION (OGRID: 873) SANTA ELENA 19 FEDERAL #1

Lease #: NMNM-007724 Projected TD: 5550' GL: 3740'
SHL: 1650' FNL & 330' FWL UL: 2 SEC: 19 T16S R30E EDDY COUNTY, NM

1. GEOLOGIC NAME OF SURFACE FORMATION: Eolian/Piedmont Alluvial Deposits
2. ESTIMATED TOPS OF GEOLOGICAL MARKERS & DEPTHS OF ANTICIPATED FRESH WATER, OIL OR GAS:

Rustler	335'	Grayburg	2378' (Oil)
Salt Top	584'	San Andres	2754' (Oil)
Salt Bottom	1048'	Glorieta	4200' (Oil)
Yates	1196'	Yeso	4266' (Oil)
Seven Rivers	1426' (Oil)		
Queen	1961' (Oil)	TD	5550'

Depth to Ground Water: ~ 91'

Fresh water & prospectively valuable minerals, as described by BLM, encountered during drilling, will be recorded by depth & adequately protected. All oil & gas shows within zones of correlative rights will be tested to determine commercial potential. Surface fresh water sands will be protected by setting 8-5/8" csg @ 340' & circ cmt back to surface. All intervals will be isolated by setting 5-1/2" csg to TD & circ cmt to surface.

3. CASING PROGRAM: All casing is new & API approved

HOLE SIZE	DEPTH	OD CSG	WEIGHT	COLLAR	GRADE	COLLAPSE	BURST	TENSION
11"	0-400'	8-5/8"	24#	STC	J-55	1.0	1.21	1.8
7-7/8"	0-5550'	5-1/2"	17#	STC	J-55	1.0	1.21	1.8

4. CEMENT PROGRAM:

A. 8-5/8" Surface: **100% excess cmt; cmt to surface***

Lead: 200 sx Cl C w/ 0.25% Defoamer (14.8 wt, 1.33 yld)

Compressive Strengths: 12 hr - 813 psi 24 hr - 1205 psi

B. 5-1/2" Production: **35% excess cmt; cmt to surface**

Lead: 200 sx Cl H 50/50 w/10% Gel + 2# Star seal + 0.25% Defoamer (11.9 wt, 2.24 yld)

Compressive Strengths: 12 hr - 540 psi 24 hr - 866 psi

Tail: 655 sx Cl C w/1% CaCl + 0.25% Defoamer (14.8 wt, 1.34 yld)

Compressive Strengths: 12 hr - 813 psi 24 psi - 1205 psi

see cmt
** The above cmt volumes could be revised pending callper measurement from open hole logs. For Surface csg: If cmt does not circ to surface, the appropriate BLM office shall be notified & TOC shall be determined as directed by the BLM for the specific set of circumstances. If depth is greater than 100' or water is standing in the annulus, remedial cementing will be done. If no water & TOC tag is less than 100', when 100% excess cmt of the annulus volume is run on the primary job, ready-mix will be used to bring cmt to surface.

5. PROPOSED CONTROL EQUIPMENT

see cmt
"EXHIBIT 3" shows an 11" 3M psi WP BOP consisting of an annular bag type preventer, middle blind rams, bottom pipe rams. This BOP will be nipped up on the 8-5/8" surface csg and utilized continuously until TD is reached. The BOP will be tested at 2000 psi (maximum surface pressure is not expected to exceed 2M psi). BHP is calculated to be approximately 2442 psi. *All BOP's and associated equipment will be tested as per BLM Drilling Operations Order #2. The BOP will be operated and checked each 24 hr period & the blind rams will be operated & checked when the drill pipe is out of the hole. Functional tests will be documented on the daily driller's log. "EXHIBIT 3" also shows a 3M psi choke manifold with a 3" blow down line. Full opening stabbing valve & Kelly cock will be on derrick floor in case of need. No abnormal pressures of temperatures are expected in this well. No nearby wells have encountered any problems.

6. PROPOSED MUD CIRCULATION SYSTEM: (Closed Loop System)

INTERVAL	MW (ppg)	VISC (sec/qt)	FLUID LOSS (cc)	MUD TYPE
0' -400'	8.6 - 8.8	20-30	NC	FW
400-5550'	9.8 - 10.2	28-36	NC	Brine

**** The necessary mud products for weight addition and fluid loss control will be on location at all times. In order to run open hole logs & casing, the above mud properties may have to be altered to meet these needs.**

7. AUXILIARY WELL CONTROL EQUIPMENT / MONITORING EQUIPMENT:

- 11" x 3000 psi Double BOP/Blind & pipe ram (3M BOP/BOPE to be used as 2M system)
- 4-1/2" x 3000 psi Kelly valve
- 11" x 3000 psi mud cross - H₂S detector on production hole
- Gate-type safety valve 3" choke line from BOP to manifold
- 2" adjustable chokes - 3" blow down line
- Fill up line as per Onshore Order 2

8. LOGGING, CORING & TESTING PROGRAM:

- A. OH logs: Dual Laterolog, MSFL, CNL, Litho-Density, Gamma Ray, Caliper & Sonic from TD back to 8-5/8" csg shoe.
- B. Run CNL, Gamma Ray from 8-5/8" csg shoe back to surface.
- C. No cores, DST's or mud logger are planned at this time.
- D. Additional testing will be initiated subsequent to setting the 5-1/2" production casing. Specific intervals will be targeted based on log evaluation, geological sample shows & drill stem tests.

See
COA

9. POTENTIAL HAZARDS:

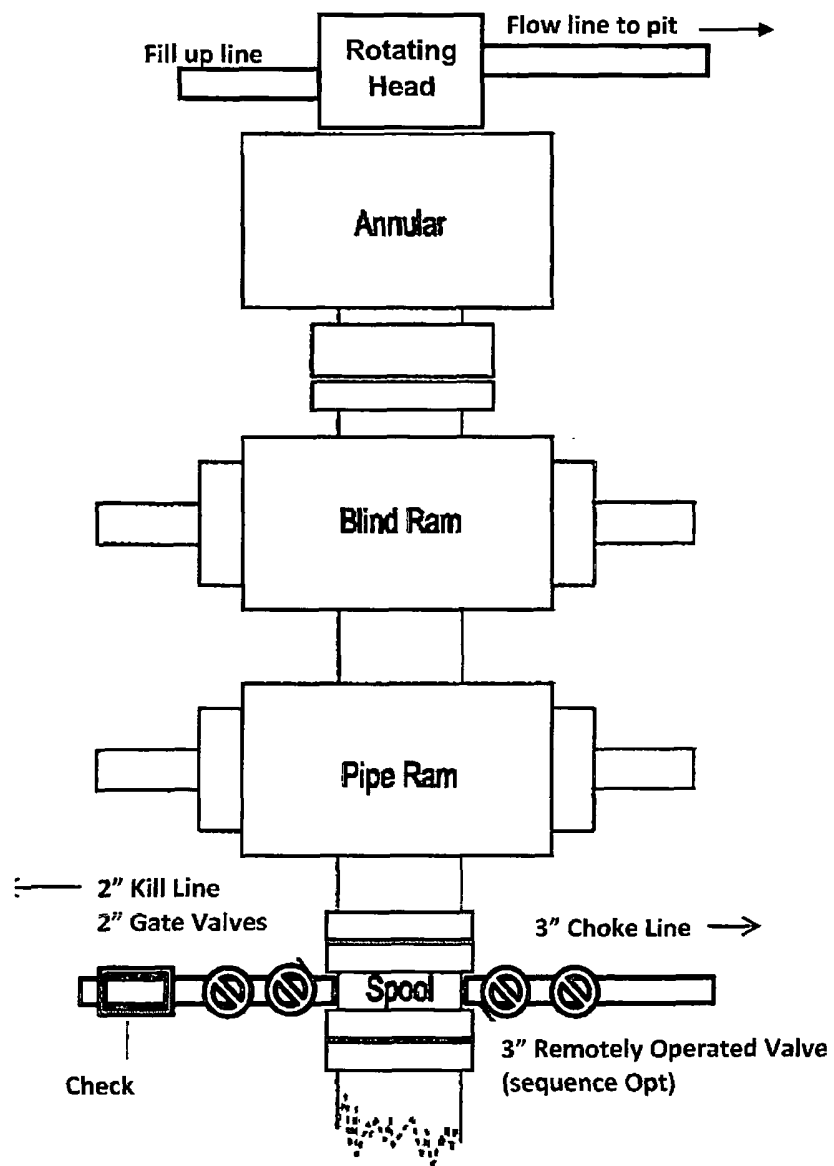
No abnormal pressures or temperatures are anticipated. In the event abnormal pressures are encountered, however, the proposed mud program will be modified to increase the mud-weight. There is known presence of H₂S in this area. If H₂S is encountered the operator will comply with the provisions of *Onshore Oil & Gas Order No. 6*. No lost circulation is expected to occur. All personnel will be familiar with all aspects of safe operation of equipment being used to drill this well. Estimated BHP: 2442 psi and estimated BHT: 115°.

10. ANTICIPATED STARTING DATE AND DURATION OF OPERATIONS:

Road and location construction will begin after & BLM has approved APD. Anticipated spud date will be as soon after Santa Fe and BLM approval and as soon as rig will be available. Move in operations and drilling is expected to take ~ 10 days. If production casing is run then an additional 90 days will be needed to complete well and construct surface facilities and/or lay flow lines in order to place well on production.

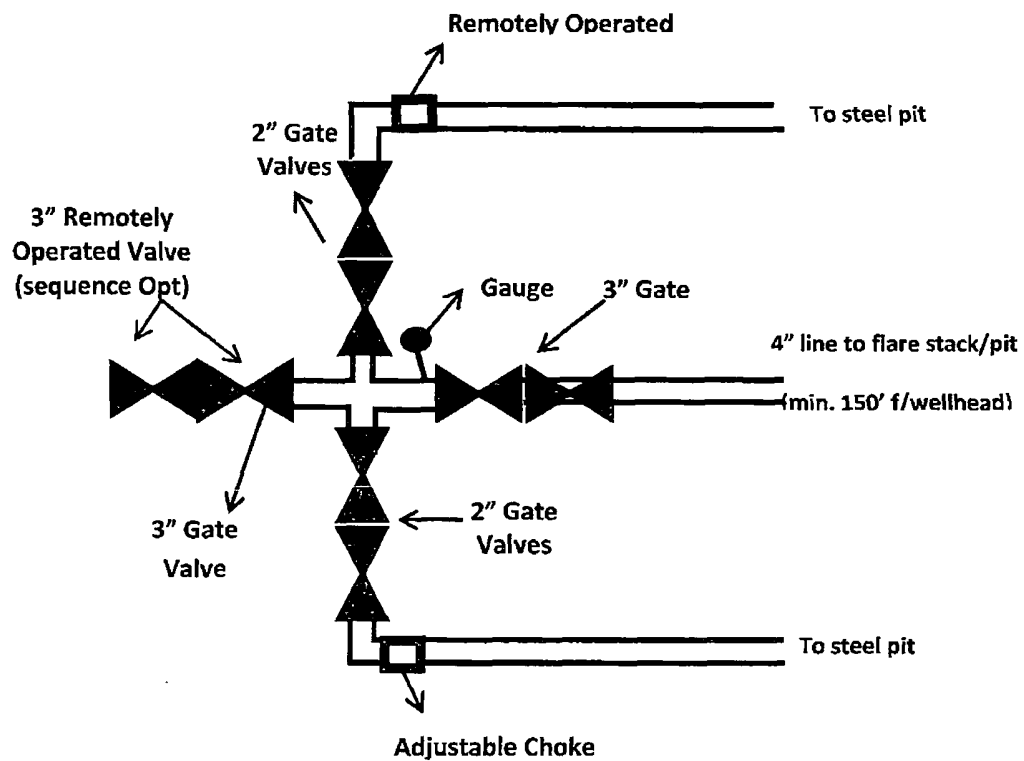
11. OTHER FACETS OF OPERATION:

After running csg, cased hole Gamma Ray, Neutron Collar logs will be run from TD back to all possible productive zones. The Loco Hills; Glorieta-Yeso formation will be perforated and stimulated in order to establish production. The well will be swab tested & potentialized as an oil well.



11" 3M psi BOPE & Choke Manifold EXHIBIT 3

All valve & lines on choke manifold are 2" unless noted.
Exact manifold configuration may vary



PECOS DISTRICT CONDITIONS OF APPROVAL

OPERATOR'S NAME:	Apache Corporation
LEASE NO.:	NM7724
WELL NAME & NO.:	1H Santa Elena 19 Federal
SURFACE HOLE FOOTAGE:	1650' FNL & 330' FWL
LOCATION:	Section 19, T.16 S., R.30 E., NMPM
COUNTY:	Eddy County, New Mexico

I. DRILLING

A. DRILLING OPERATIONS REQUIREMENTS

The BLM is to be notified a minimum of 4 hours in advance for a representative to witness:

- a. Spudding well
- b. Setting and/or Cementing of all casing strings
- c. BOPE tests

☒ **Eddy County**

Call the Carlsbad Field Office, 620 East Greene St., Carlsbad, NM 88220,
(575) 361-2822

1. **Although Hydrogen Sulfide has not been reported in the area, it is always a potential hazard. If Hydrogen Sulfide is encountered, please report measured amounts and formations to the BLM.**
2. Unless the production casing has been run and cemented or the well has been properly plugged, the drilling rig shall not be removed from over the hole without prior approval. **If the drilling rig is removed without approval – an Incident of Non-Compliance will be written and will be a “Major” violation.**
3. Floor controls are required for 3M or Greater systems. These controls will be on the rig floor, unobstructed, readily accessible to the driller and will be operational at all times during drilling and/or completion activities. Rig floor is defined as the area immediately around the rotary table; the area immediately above the substructure on which the draw works is located, this does not include the dog house or stairway area.

4. The record of the drilling rate along with the GR/N well log run from TD to surface shall be submitted to the BLM office as well as all other logs run on the borehole 30 days from completion. If available, a digital copy of the logs is to be submitted in addition to the paper copies. The Rustler top and top and bottom of Salt are to be recorded on the Completion Report.

B. CASING

Changes to the approved APD casing program need prior approval if the items substituted are of lesser grade or different casing size. The Operator can exchange the components of the proposal with that of superior strength (i.e. changing from J-55 to N-80, or from 36# to 40#). Changes to the approved cement program need prior approval if the altered cement plan has less volume or strength or if the changes are substantial (i.e. Multistage tool, ECP, etc.).

Centralizers required on surface casing per Onshore Order 2.III.B.1.f.

Wait on cement (WOC) time prior to drilling out for a primary cement job will be a minimum 18 hours for a water basin, 24 hours in the potash area, or 500 pounds compressive strength, whichever is greater for all casing strings. **DURING THIS WOC TIME, NO DRILL PIPE, ETC. SHALL BE RUN IN THE HOLE.** Provide compressive strengths including hours to reach required 500 pounds compressive strength prior to cementing each casing string. See individual casing strings for details regarding lead cement slurry requirements.

No pea gravel permitted for remedial or fall back remedial without prior authorization from the BLM engineer.

Possible lost circulation in the San Andres Formation.

1. The 11 inch surface casing shall be set at **approximately 400 feet (a minimum of 25 feet into the Rustler Anhydrite and above the salt)** and cemented to the surface.
 - a. Effective June 6, 2012, the BLM will no longer approve a tag with 1" to determine cement top. If cement does not circulate to the surface, the appropriate BLM office shall be notified and a temperature survey utilizing an electronic type temperature survey with surface log readout will be used or a cement bond log shall be run to verify the top of the cement. Temperature survey will be run a minimum of six hours after pumping cement and ideally
 - b. **Wait on cement (WOC) time for a primary cement job is to include the lead cement slurry.**
 - c. Wait on cement (WOC) time for a remedial job will be a minimum of 4 hours after bringing cement to surface or 500 pounds compressive strength, whichever is greater.

- d. If cement falls back, remedial cementing will be done prior to drilling out that string.
2. The minimum required fill of cement behind the **7-7/8** inch intermediate casing is:
 - ☒ Cement to surface. If cement does not circulate see B.1.a, c-d above.
3. If hardband drill pipe is rotated inside casing, returns will be monitored for metal. If metal is found in samples, drill pipe will be pulled and rubber protectors which have a larger diameter than the tool joints of the drill pipe will be installed prior to continuing drilling operations.

C. PRESSURE CONTROL

1. All blowout preventer (BOP) and related equipment (BOPE) shall comply with well control requirements as described in Onshore Oil and Gas Order No. 2 and API RP 53 Sec. 17.
2. Minimum working pressure of the blowout preventer (BOP) and related equipment (BOPE) required for drilling below the surface casing shoe shall be **2000 (2M) psi. Operator installing 3M testing as 2M**
3. The appropriate BLM office shall be notified a minimum of 4 hours in advance for a representative to witness the tests.
 - a. In a water basin, for all casing strings utilizing slips, these are to be set as soon as the crew and rig are ready and any fallback cement remediation has been done. The casing cut-off and BOP installation can be initiated four hours after installing the slips, which will be approximately six hours after bumping the plug. For those casing strings not using slips, the minimum wait time before cut-off is eight hours after bumping the plug. BOP/BOPE testing can begin after cut-off or once cement reaches 500 psi compressive strength (including lead when specified), whichever is greater. However, if the float does not hold, cut-off cannot be initiated until cement reaches 500 psi compressive strength (including lead when specified).
 - b. The tests shall be done by an independent service company utilizing a test plug **not a cup or J-packer**. The operator also has the option of utilizing an independent tester to test without a plug (i.e. against the casing) pursuant to Onshore Order 2 with the pressure not to exceed 70% of the burst rating for the casing. Any test against the casing must meet the WOC time for water basin (18 hours) or potash (24 hours) or 500 pounds compressive strength, whichever is greater, prior to initiating the test (see casing segment as lead cement may be critical item).

- c. The results of the test shall be reported to the appropriate BLM office.
- d. All tests are required to be recorded on a calibrated test chart. **A copy of the BOP/BOPE test chart and a copy of independent service company test will be submitted to the appropriate BLM office.**
- e. The BOP/BOPE test shall include a low pressure test from 250 to 300 psi. The test will be held for a minimum of 10 minutes if test is done with a test plug and 30 minutes without a test plug.

D. DRILL STEM TEST

If drill stem tests are performed, Onshore Order 2.III.D shall be followed.

E. WASTE MATERIAL AND FLUIDS

All waste (i.e. drilling fluids, trash, salts, chemicals, sewage, gray water, etc.) created as a result of drilling operations and completion operations shall be safely contained and disposed of properly at a waste disposal facility. No waste material or fluid shall be disposed of on the well location or surrounding area.

Porto-johns and trash containers will be on-location during fracturing operations or any other crew-intensive operations.

JAM 103112