

District I
1625 N. French Dr., Hobbs, NM 88240
District II
1301 W. Grand Avenue, Artesia, NM 88210
District III
1000 Rio Brazos Road, Aztec, NM 87410
District IV
1220 S. St. Francis Dr., Santa Fe, NM 87505

State of New Mexico
Energy Minerals and Natural Resources

Form C-101
March 4, 2004

Oil Conservation Division
1220 South St. Francis Dr.
Santa Fe, NM 87505

RECEIVED

Submit to appropriate District Office
State Lease - 6 Copies
Fee Lease - 5 Copies

JUN 15 2004

OCD-ARTESIA ☐ AMENDED REPORT

APPLICATION FOR PERMIT TO DRILL, RE-ENTER, DEEPEN, PLUGBACK, OR ADD A ZONE

¹ Operator Name and Address Bass Enterprises Production Co. P. O. Box 2760 Midland, TX 79702		² OGRID Number 001801
		³ API Number 30-015-23131
⁴ Property Code 1775	⁵ Property Name BIG EDDY	⁶ Well No. 64

⁷ Surface Location

UL or lot no.	Section	Township	Range	Lot Idn	Feet from the	North/South line	Feet from the	East/Westline	County
K	33	21S	28E		660	SOUTH	1980	WEST	EDDY

⁸ Proposed Bottom Hole Location If Different From Surface

UL or lot no.	Section	Township	Range	Lot Idn	Feet from the	North/South line	Feet from the	East/Westline	County
Four	LATERALS:	See Section 22 below	for Lateral	Bottom Hole	LOCATIONS				
⁹ Proposed Pool 1 Sand Point Morrow					¹⁰ Proposed Pool 2				

Drilling Pit Location and Other Information

UL or lot no.	Section	Township	Range	Lot Idn	Feet from the	North/South line	Feet from the	East/Westline	County
K	33	21S	28E		660	SOUTH	1980	WEST	EDDY
Depth to ground water 41			Distance from nearest fresh water well 2.9 MILES			Distance from nearest surface water 4 MILES			
¹¹ Work Type Code E		¹² Well Type Code G		¹³ Cable/Rotary R		¹⁴ Lease Type Code F		¹⁵ Ground Level Elevation 3147'	
¹⁶ Multiple N		¹⁷ Proposed Depth 12,500' TVD		¹⁸ Formation MORROW		¹⁹ Contractor KEY OR BASIC		²⁰ Spud Date 08/01/2004	

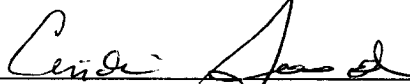
²¹ Proposed Casing and Cement Program

Hole Size	Casing Size	Casing weight/foot	Setting Depth	Sacks of Cement	Estimated TOC
4 3/4"	N/A	N/A	N/A	N/A	N/A

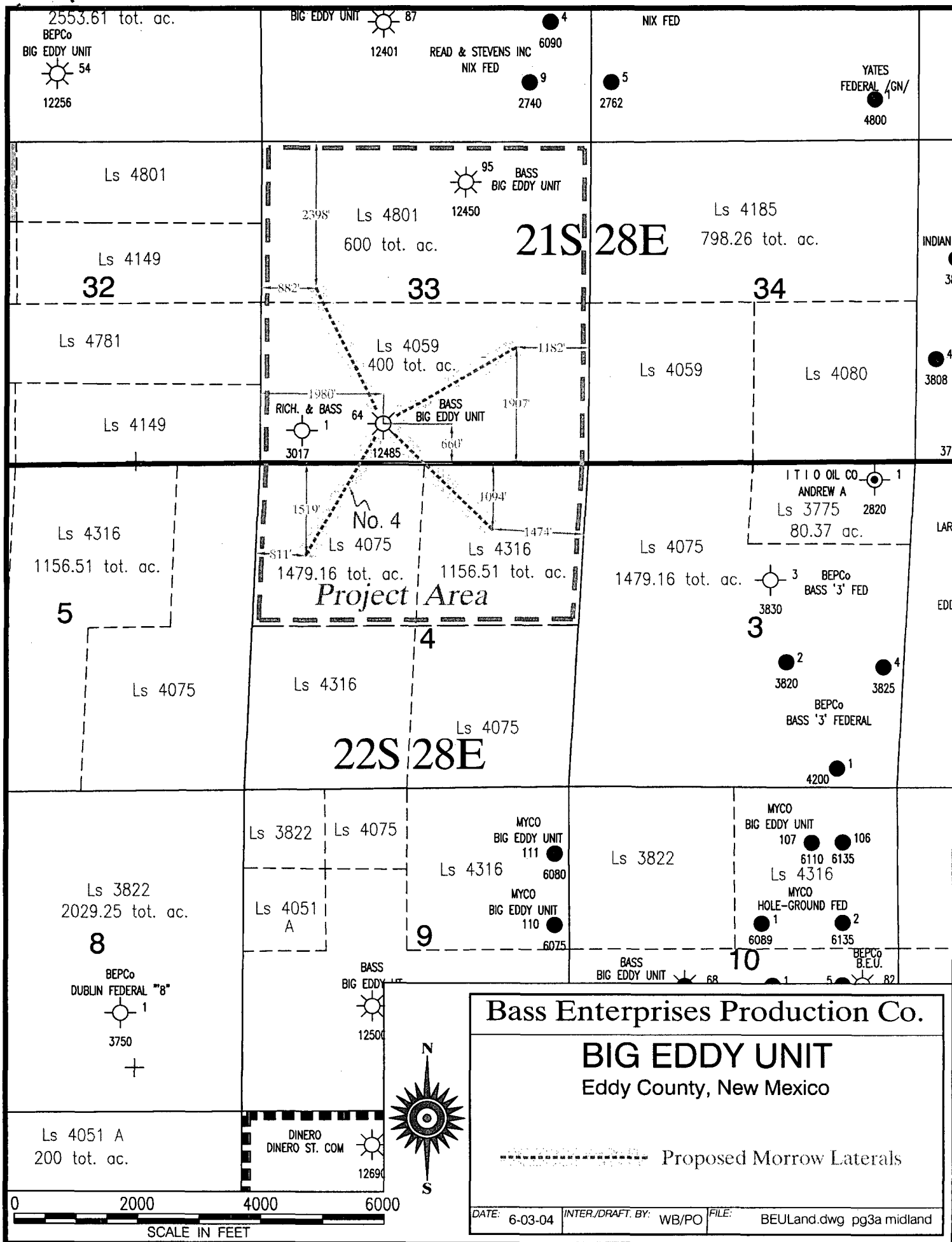
²² Describe the proposed program. If this application is to DEEPEN or PLUG BACK, give the data on the present productive zone and proposed new productive zone. Describe the blowout prevention program, if any. Use additional sheets if necessary.

Well currently TA'a in the Strawn 3/20/02. Propose to recomplate to the Morrow, and drill four laterals targeting the Morrow. BOP program attached. The four lateral Bottom Hole Locations are as follows: 1) UL E, Sec 33, T21S, R28E, 2398' FNL 822' FWL. 2) UL I, Sec 33, T21S, R28E, 1907' FSL, 1182' FEL. 3) UL B, Sec 4, T22S, R28E, 1094' FNL, 1474' FEL. 4) UL E, Sec 4, T22S, R28E, 1519' FNL, 811' FWL. Proposed laterals TVD = 12,500'; MD = 14,500'.

²³ I hereby certify that the information given above is true and complete to the best of my knowledge and belief. I further certify that the drilling pit will be constructed according to NMOCD guidelines ☒, a general permit ☐, or an (attached) alternative OCD-approved plan ☐.

Signature: 
Printed name: Cindi Goodman
Title: Production Clerk
E-mail Address: cdgoodman@basspet.com
Date: 06/09/2004
Phone: (432)683-2277

OIL CONSERVATION DIVISION	
Approved by: TIM W. GUM DISTRICT II SUPERVISOR	
Title:	
Approval Date: MAY 23 2005	Expiration Date: MAY 23 2006
Condition of Approval: Attached <input type="checkbox"/>	



DISTRICT I
1825 N. French Dr., Hobbs, NM 88240

DISTRICT II
811 South First, Artesia, NM 88210

DISTRICT III
1000 Rio Brazos Rd., Aztec, NM 87410

DISTRICT IV
2040 South Pacheco, Santa Fe, NM 87505

State of New Mexico
Energy, Minerals and Natural Resources Department

Form C-102
Revised March 17, 1999

Submit to Appropriate District Office
State Lease - 4 Copies
Fee Lease - 3 Copies

OIL CONSERVATION DIVISION

2040 South Pacheco
Santa Fe, New Mexico 87504-2088

☐ AMENDED REPORT

WELL LOCATION AND ACREAGE DEDICATION PLAT

API Number 30-015-23131	Pool Code	Pool Name INDIAN FLATS WEST (MORROW)
Property Code 1775	Property Name BIG EDDY	Well Number 64
OGRID No. 001801	Operator Name BASS ENTERPRISES PRODUCTION COMPANY	Elevation 3152'

Surface Location

UL or lot No. N	Section 33	Township 21 S	Range 28 E	Lot Idn	Feet from the 660'	North/South line SOUTH	Feet from the 1980'	East/West line WEST	County EDDY
--------------------	---------------	------------------	---------------	---------	-----------------------	---------------------------	------------------------	------------------------	----------------

Bottom Hole Location If Different From Surface

UL or lot No. E	Section 33	Township 21 S	Range 28 E	Lot Idn	Feet from the 2398	North/South line NORTH	Feet from the 882'	East/West line WEST	County EDDY
Dedicated Acres 242.86	Joint or Infill	Consolidation Code	Order No.						

NO ALLOWABLE WILL BE ASSIGNED TO THIS COMPLETION UNTIL ALL INTERESTS HAVE BEEN CONSOLIDATED
OR A NON-STANDARD UNIT HAS BEEN APPROVED BY THE DIVISION

	<p>OPERATOR CERTIFICATION</p> <p>I hereby certify the the information contained herein is true and complete to the best of my knowledge and belief.</p> <p><u>William R. Dannels</u> Signature W.R. DANNELS Printed Name DIVISION DRILLING SUPT. Title 6/10/04 Date</p> <p>SURVEYOR CERTIFICATION</p> <p>I hereby certify that the well location shown on this plat was plotted from field notes of actual surveys made by me or under my supervision and that the same is true and correct to the best of my belief.</p> <p>JUNE 7, 2004</p> <p>Date Surveyed Signature & Seal of Professional Surveyor W.O. No. 4337 Certificate No. Gary Jones 7977 JLP BASIN-SURVEYS</p>
--	--

DISTRICT I
1825 N. French Dr., Hobbs, NM 88240

DISTRICT II
811 South First, Artesia, NM 88210

DISTRICT III
1000 Rio Brazos Rd., Aztec, NM 87410

DISTRICT IV
2040 South Pacheco, Santa Fe, NM 87505

State of New Mexico
Energy, Minerals and Natural Resources Department

Form C-102
Revised March 17, 1999

Submit to Appropriate District Office
State Lease - 4 Copies
Fee Lease - 3 Copies

OIL CONSERVATION DIVISION

2040 South Pacheco
Santa Fe, New Mexico 87504-2088

☐ AMENDED REPORT

WELL LOCATION AND ACREAGE DEDICATION PLAT

API Number 30-015-23131	Pool Code	Pool Name INDIAN FLATS WEST (MORROW)
Property Code 1775	Property Name BIG EDDY	Well Number 64
OGRID No. 001801	Operator Name BASS ENTERPRISES PRODUCTION COMPANY	Elevation 3152'

Surface Location

UL or lot No. N	Section 33	Township 21 S	Range 28 E	Lot Idn	Feet from the 660'	North/South line SOUTH	Feet from the 1980'	East/West line WEST	County EDDY
--------------------	---------------	------------------	---------------	---------	-----------------------	---------------------------	------------------------	------------------------	----------------

Bottom Hole Location If Different From Surface

UL or lot No. I	Section 33	Township 21 S	Range 28 E	Lot Idn	Feet from the 1907'	North/South line SOUTH	Feet from the 1182'	East/West line EAST	County EDDY
Dedicated Acres 242.86	Joint or Infill	Consolidation Code	Order No.						

NO ALLOWABLE WILL BE ASSIGNED TO THIS COMPLETION UNTIL ALL INTERESTS HAVE BEEN CONSOLIDATED
OR A NON-STANDARD UNIT HAS BEEN APPROVED BY THE DIVISION

				<p>OPERATOR CERTIFICATION</p> <p>I hereby certify the the information contained herein is true and complete to the best of my knowledge and belief.</p> <p><u>William R. Dannels</u> Signature</p> <p>W.R. DANNELS Printed Name</p> <p>DIVISION DRILLING SUPT. Title</p> <p>6/10/04 Date</p>	
<p>SURVEYOR CERTIFICATION</p> <p>I hereby certify that the well location shown on this plat was plotted from field notes of actual surveys made by me or under my supervision, and that the same is true and correct to the best of my belief.</p> <p>JUNE 7, 2004 Date Surveyed</p> <p><u>W.O. No. 4337</u> Signature & Seal of Jones Professional Surveyor</p> <p>Certificate No. Gary L. Jones 7977</p> <p>JLP BASIN SURVEY</p>					

DISTRICT I
1825 N. French Dr., Hobbs, NM 88240
DISTRICT II
811 South First, Artesia, NM 88210
DISTRICT III
1000 Rio Brazos Rd., Aztec, NM 87410
DISTRICT IV
2040 South Pacheco, Santa Fe, NM 87505

State of New Mexico
Energy, Minerals and Natural Resources Department

Form C-102
Revised March 17, 1999

Submit to Appropriate District Office
State Lease - 4 Copies
Fee Lease - 3 Copies

OIL CONSERVATION DIVISION

2040 South Pacheco
Santa Fe, New Mexico 87504-2088

☐ AMENDED REPORT

WELL LOCATION AND ACREAGE DEDICATION PLAT

API Number 30-015-23131	Pool Code	Pool Name INDIAN FLATS WEST (MORROW)
Property Code 1775	Property Name BIG EDDY	Well Number 64
OGRID No. 001801	Operator Name BASS ENTERPRISES PRODUCTION COMPANY	Elevation 3152'

Surface Location

UL or lot No.	Section	Township	Range	Lot Idn	Feet from the	North/South line	Feet from the	East/West line	County
N	33	21 S	28 E		660'	SOUTH	1980'	WEST	EDDY

Bottom Hole Location If Different From Surface

UL or lot No.	Section	Township	Range	Lot Idn	Feet from the	North/South line	Feet from the	East/West line	County
B	4	22 S	28 E		1094	NORTH	1474	EAST	EDDY
Dedicated Acres 242.86	Joint or Infill	Consolidation Code	Order No.						

NO ALLOWABLE WILL BE ASSIGNED TO THIS COMPLETION UNTIL ALL INTERESTS HAVE BEEN CONSOLIDATED
OR A NON-STANDARD UNIT HAS BEEN APPROVED BY THE DIVISION

	<p>OPERATOR CERTIFICATION</p> <p>I hereby certify the the information contained herein is true and complete to the best of my knowledge and belief.</p> <p><u>William R. Dannels</u> Signature</p> <p>W.R. DANNELS Printed Name</p> <p>DIVISION DRILLING SUPT. Title</p> <p><u>6/10/04</u> Date</p> <p>SURVEYOR CERTIFICATION</p> <p>I hereby certify that the well location shown on this plat was plotted from field notes of actual surveys made by me or under my supervision, and that the same is true and correct to the best of my belief.</p> <p>JUNE 7, 2004 Date Surveyed</p> <p><u>W.O. No. 4337</u> Signature & Seal of Professional Surveyor</p> <p>7977 Certificate No. Gary L. Jones</p> <p>JLP BASS SURVEYS</p>
--	--

DISTRICT II
811 South First, Artesia, NM 86210

Submit to Appropriate District Office
State Lease - 4 Copies
Fee Lease - 3 Copies

DISTRICT III
1000 Rio Brazos Rd., Aztec, NM 87410

OIL CONSERVATION DIVISION

DISTRICT IV
2040 South Pacheco, Santa Fe, NM 87505

2040 South Pacheco
Santa Fe, New Mexico 87504-2088

□ AMENDED REPORT

WELL LOCATION AND ACREAGE DEDICATION PLAT

API Number 30-015-23131	Pool Code	Pool Name INDIAN FLATS WEST (MORROW)
Property Code 1775	Property Name BIG EDDY	Well Number 64
OGRID No. 001801	Operator Name BASS ENTERPRISES PRODUCTION COMPANY	Elevation 3152'

Surface Location

UL or lot No.	Section	Township	Range	Lot Idn	Feet from the	North/South line	Feet from the	East/West line	County
N	33	21 S	28 E		660'	SOUTH	1980'	WEST	EDDY

Bottom Hole Location If Different From Surface

UL or lot No.	Section	Township	Range	Lot Idn	Feet from the	North/South line	Feet from the	East/West line	County
E	4	22 S	28 E		1519	NORTH	811'	WEST	EDDY

Dedicated Acres	Joint or Infill	Consolidation Code	Order No.
242.86			

NO ALLOWABLE WILL BE ASSIGNED TO THIS COMPLETION UNTIL ALL INTERESTS HAVE BEEN CONSOLIDATED
OR A NON-STANDARD UNIT HAS BEEN APPROVED BY THE DIVISION

33

161.45 AC.
GLO

161.16 AC.
GLO

1980'

3152.4'

3152.4

LAT - N32°25'52.6"
LONG - W103°05'37.9"

3154.7'

3154.7

660'

2513.8'

162.69 AC.
GLO

163.35 AC.
GLO

1519'

811'

B.H.

LAT - N32°25'31.2"
LONG - W103°05'52.7"

4

OPERATOR CERTIFICATION

I hereby certify the the information contained herein is true and complete to the best of my knowledge and belief.

William R. Dannels
Signature

W.R. DANNELS
Printed Name

DIVISION DRILLING SUPT.
Title

6/10/04
Date

SURVEYOR CERTIFICATION

I hereby certify that the well location shown on this plat was plotted from field notes of actual surveys made by me or under my supervision, and that the same is true and correct to the best of my belief.

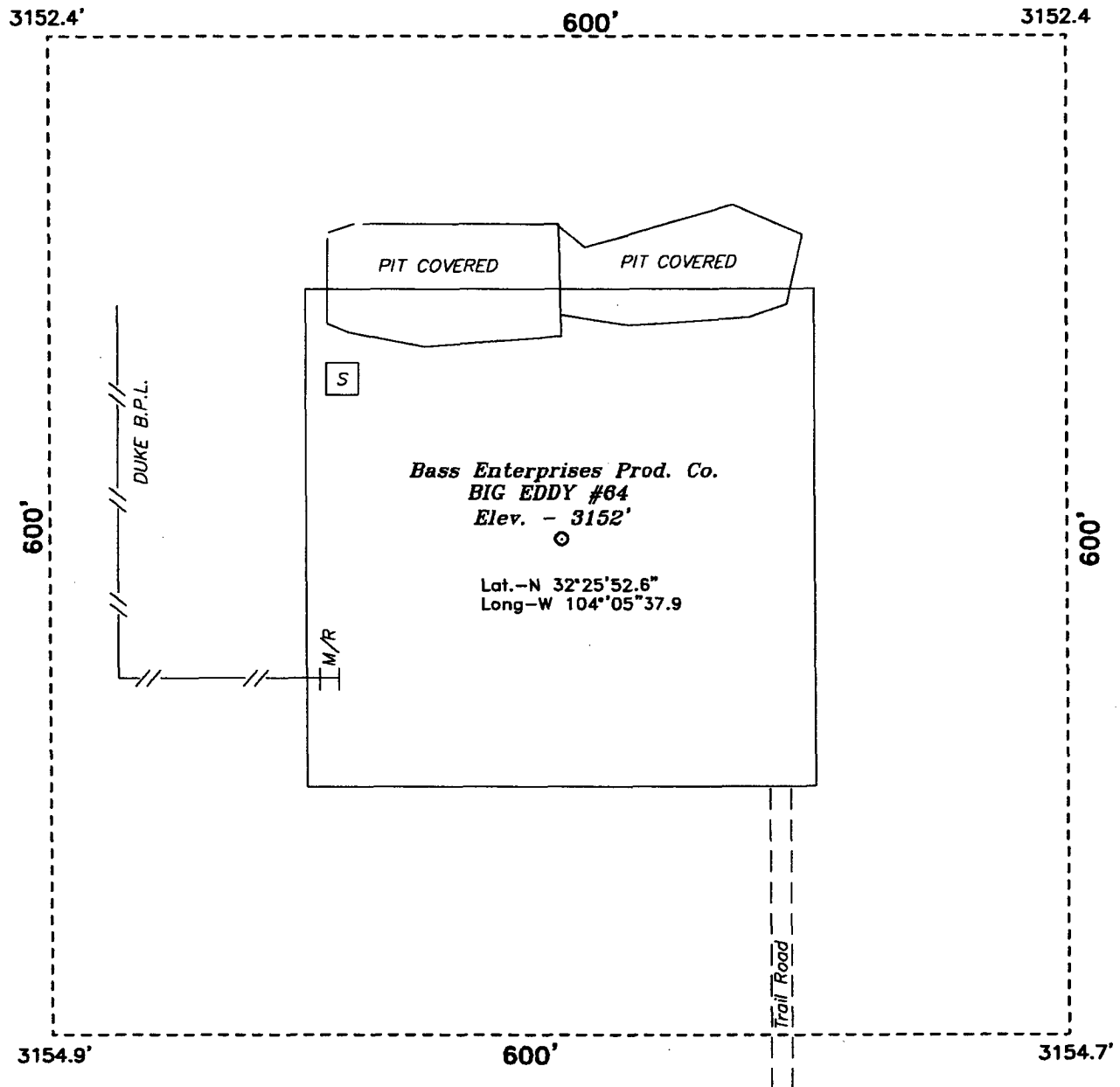
JUNE 7, 2004
Date Surveyed

Signature of Seal of Gary L. Jones
Professional Surveyor

NEW MEXICO
7777
W.O. No. 4337
7977

Certificate No. Gary L. Jones
JLP
BASIN SURVEYS

SECTION 33, TOWNSHIP 21 SOUTH, RANGE 28 EAST, N.M.P.M.,
EDDY COUNTY, NEW MEXICO.



DIRECTIONS TO LOCATION:

FROM THE JUNCTION OF U.S.A. HWY. 62-180 AND
EDDY CO. 603A GO SOUTHWEST ON 62 APPROX. 0.3
MILES TO A LEASE ROAD SOUTHEAST 4.1 MILES THEN
EAST, 1.4 MILES, THEN NORTH 1.3 MILES, THEN WEST
0.2 MILES, THEN NORTH TO LOCATION.

BASIN SURVEYS P.O. BOX 1786-HOBBS, NEW MEXICO

W.O. Number: 4337 Drawn By: K. GOAD

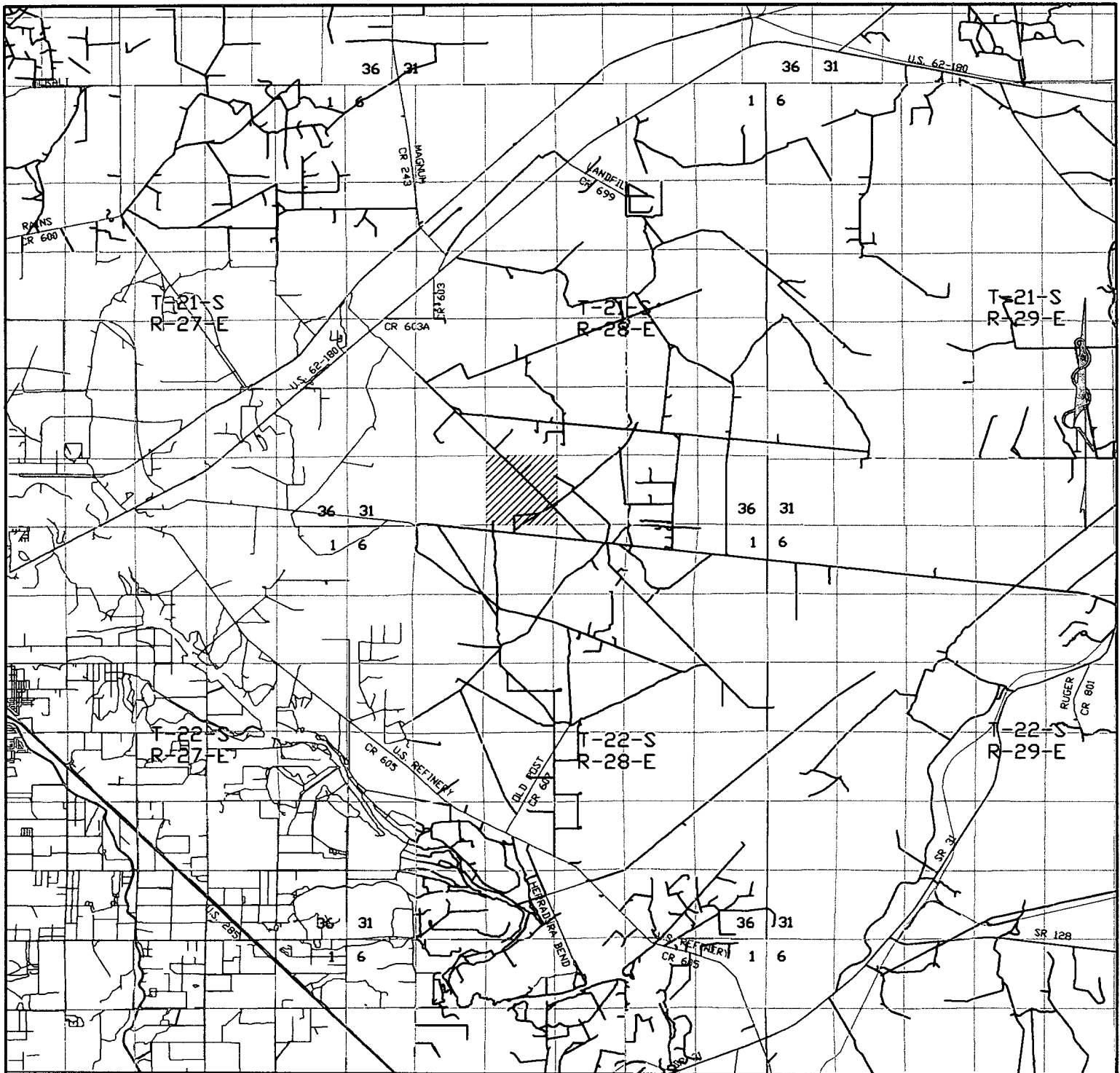
Date: 06-09-2004 Disk: JLP #1 - 4337A.DWG

BASS ENTERPRISES PRODUCTION CO.

REF: BIG EDDY #64 / Well Pad Topo

THE BIG EDDY UNIT No. 64 LOCATED 660' FROM
THE SOUTH LINE AND 1980' FROM THE WEST LINE OF
SECTION 33, TOWNSHIP 21 SOUTH, RANGE 28 EAST,
N.M.P.M., EDDY COUNTY, NEW MEXICO.

Survey Date: 06-07-2004 Sheet 1 of 1 Sheets



BIG EDDY #64

Located at 660' FSL and 1980' FWL
Section 33, Township 21 South, Range 28 East,
N.M.P.M., Eddy County, New Mexico.

basin
surveys

focused on excellence
in the oilfield

P.O. Box 1786
1120 N. West County Rd.
Hobbs, New Mexico 88241
(505) 393-7316 - Office
(505) 392-3074 - Fax
basinsurveys.com

W.O. Number: 4337AA - JLP #1

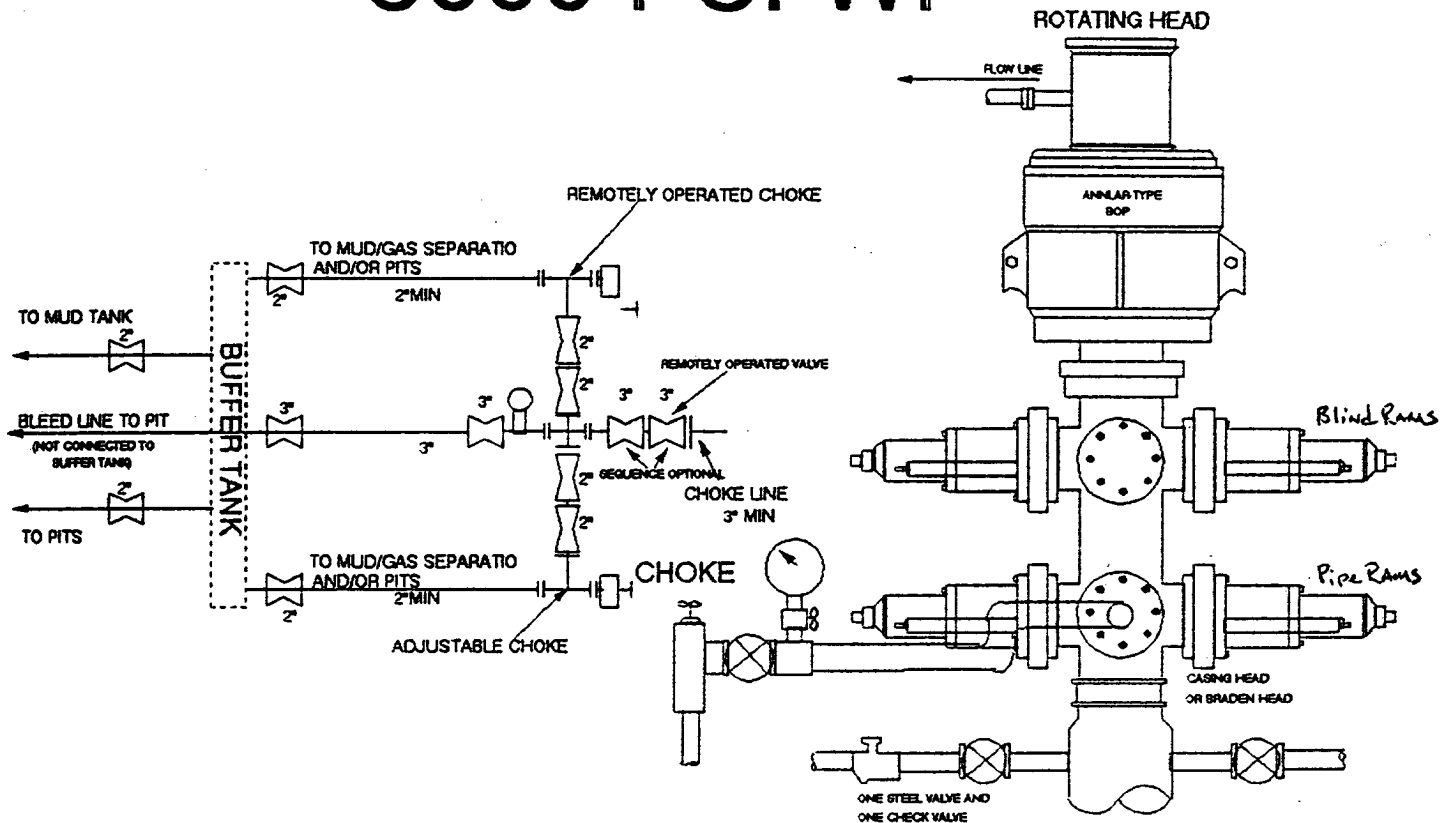
Survey Date: 06/07/04

Scale: 1" = 2000'

Date: 06/09/04

BASS ENTERPRISES
PRODUCTION CO.

5000 PSI WP



THE FOLLOWING CONSTITUTE MINIMUM BLOWOUT PREVENTER REQUIREMENTS

- A. One double gate blowout preventer with lower rams for pipe and upper rams blind, all hydraulically controlled.
- B. Opening on preventers between rams to be flanged, studded or clamped and at least two inches in diameter.
- C. All connections from operating manifold to preventers to be all steel hose or tube a minimum of one inch in diameter.
- D. The available closing pressure shall be at least 15% in excess of that required with sufficient volume to operate (close, open, and re-close) the preventers.
- E. All connections to and from preventers to have a pressure rating equivalent to that of the BOP's.
- F. Manual controls to be installed before drilling cement plug.
- G. Valve to control flow through drill pipe to be located on rig floor.
- H. All chokes will be adjustable. Choke spool may be used between rams.

DIAGRAM 1