

**DISTRICT I**  
 1025 E. French St., Santa Fe, NM 87508

**DISTRICT II**  
 811 South First, Arisimo, NM 86218

**DISTRICT III**  
 1000 E. Avenue B., Arisimo, NM 87418

**DISTRICT IV**  
 2000 North Pacheco, Santa Fe, NM 87506

State of New Mexico  
 Energy, Minerals and Natural Resources Department

Form C-102  
 Revised March 17, 1988

Submit to Appropriate District Office  
 State Lease - 4 Copies  
 Fee Lease - 3 Copies

**OIL CONSERVATION DIVISION**  
 2040 South Pacheco  
 Santa Fe, New Mexico 87504-2088

AMENDED REPORT

**WELL LOCATION AND ACREAGE DEDICATION PLAT**

API Number 30-015-32149	Pool Code 47545	Pool Name Nash Draw (Delaware)
Property Code 001796	Property Name POKER LAKE UNIT	Well Number 192
OGSD No. 001801	Operator Name BASS ENTERPRISES PRODUCTION COMPANY	Elevation 3192'

Surface Location

UL or Lot No.	Section	Township	Range	Lot Idn	Feet from the	North/South line	Feet from the	East/West line	County
L	8	24 S	30 E		2130	SOUTH	380	WEST	EDDY

Bottom Hole Location if Different From Surface

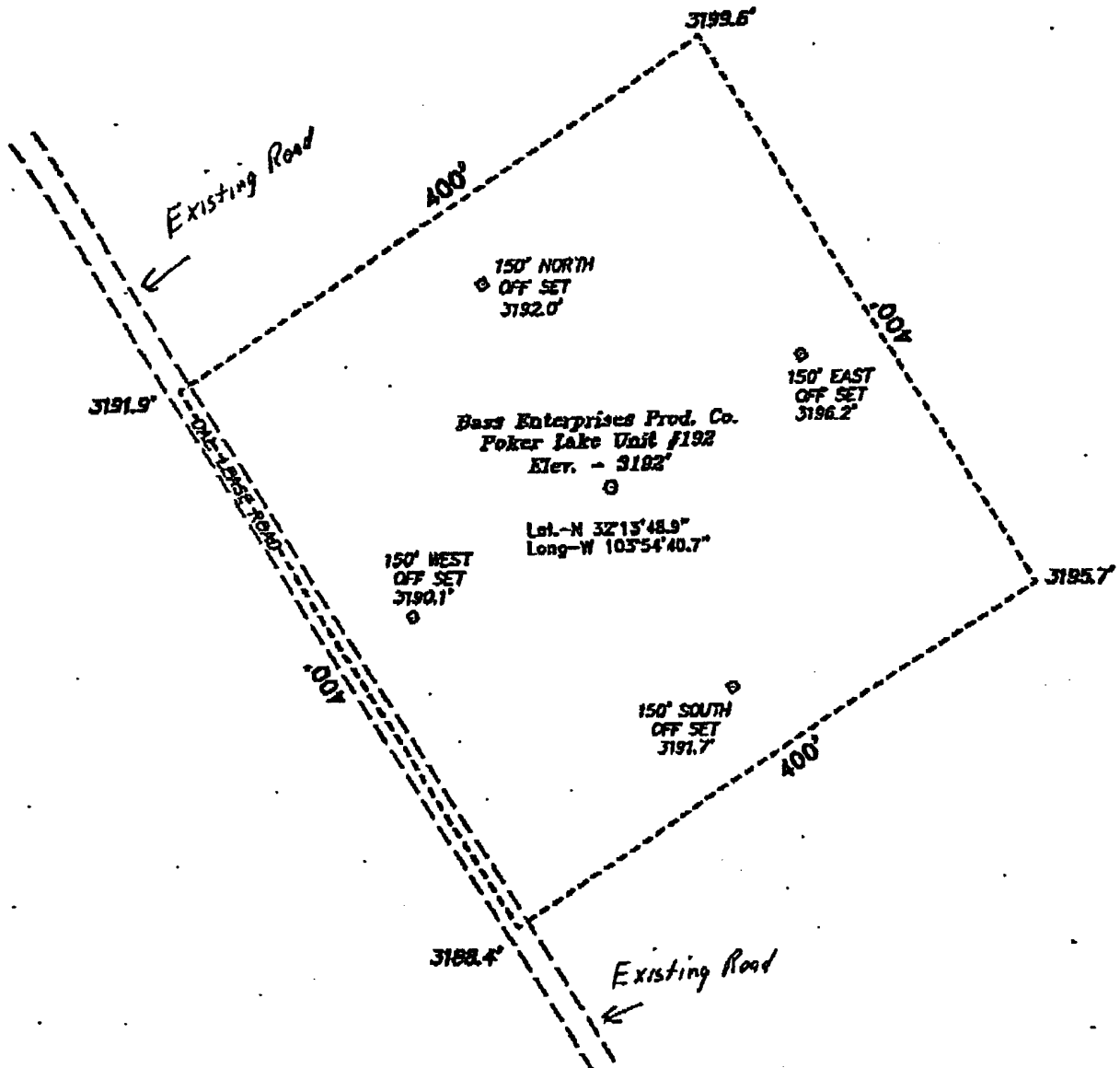
UL or Lot No.	Section	Township	Range	Lot Idn	Feet from the	North/South line	Feet from the	East/West line	County

Dedicated Acres 40	Joint or Int'd N	Consolidation Code	Order No.
-----------------------	---------------------	--------------------	-----------

**NO ALLOWABLE WILL BE ASSIGNED TO THIS COMPLETION UNTIL ALL INTERESTS HAVE BEEN CONSOLIDATED OR A NON-STANDARD UNIT HAS BEEN APPROVED BY THE DIVISION**

	<p><b>OPERATOR CERTIFICATION</b></p> <p>I hereby certify that the information contained herein is true and complete to the best of my knowledge and belief.</p> <p><i>William R. Dannels</i>        Signature</p> <p>William R. Dannels        Printed Name</p> <p>Division Drilling Supt.        Title</p> <p>Date 1-15-04</p>
	<p><b>SURVEYOR CERTIFICATION</b></p> <p>I hereby certify that the well location shown on this plat was plotted from field notes of actual surveys made by me or under my supervision, and that the same is true and correct to the best of my belief.</p> <p>September 7, 2001        Date Surveyed</p> <p><i>William R. Jones</i>        Signature &amp; Seal        Professional Surveyor</p> <p>7777        P.O. No. 1835</p> <p>7977        CERTIFICATE NO.</p> <p>HARRIS SURVEYS</p>

**SECTION 8, TOWNSHIP 24 SOUTH, RANGE 30 EAST, N.M.P.M.,  
EDDY COUNTY, NEW MEXICO.**



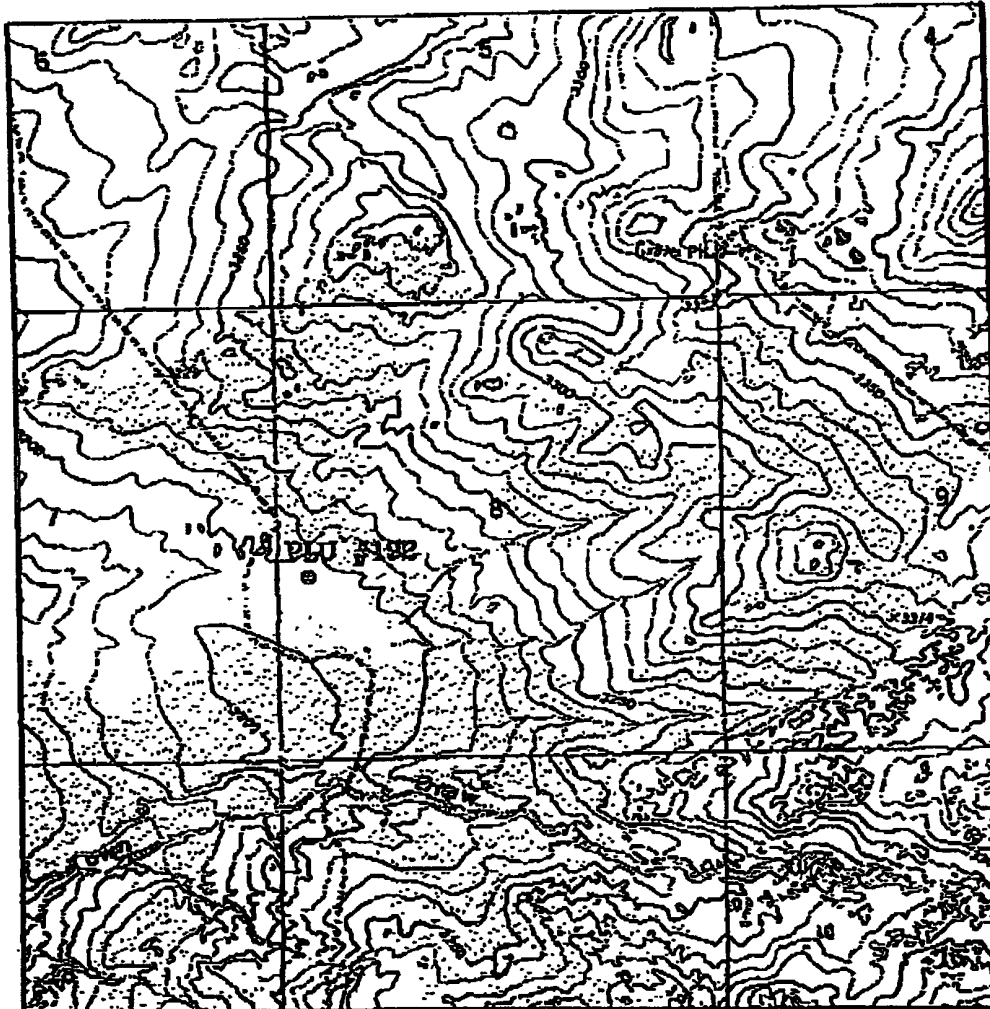
**DIRECTIONS TO LOCATION:**

FROM THE JUNCTION OF STATE HWY 128 & CO. RD. 787 (TWIN WELLS ROAD), GO SOUTH 9.0 MILES TO CO. RD. 746 (MCDONALD ROAD); THENCE WEST 4.5 MILES TO CO. RD. 746-A (GAYLAN RD.); THENCE NORTH 4.0 MILES TO PROPOSED LEASE ROAD.



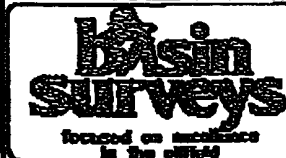
**BASIN SURVEYS** P.O. BOX 1788-HOBBS, NEW MEXICO  
 W.D. Number: 1893      Drawn By: K. GOAD  
 Date: 09-12-2001      Disk: KJG CO#3 - 1893A.DWG

<b>BASS ENTERPRISES PRODUCTION CO.</b>	
REF: Poker Lake Unit No. 192 / Well Pad Topo	
THE POKER LAKE UNIT No. 192 LOCATED 2130' FROM THE SOUTH LINE AND 380' FROM THE WEST LINE OF SECTION 8, TOWNSHIP 24 SOUTH, RANGE 30 EAST, N.M.P.M., EDDY COUNTY, NEW MEXICO.	
Survey Date: 09-07-2001	Sheet 1 of 1 Sheets



**POKER LAKE UNIT #192**

Located at 2130' FSL and 380' FWL  
 Section 8, Township 24 South, Range 30 East,  
 N.M.P.M., Eddy County, New Mexico.



P.O. Box 1788  
 1120 N. West County Rd.  
 Hobbs, New Mexico 88241  
 (505) 393-7318 - Office  
 (505) 392-3074 - Fax  
 basin-surveys.com

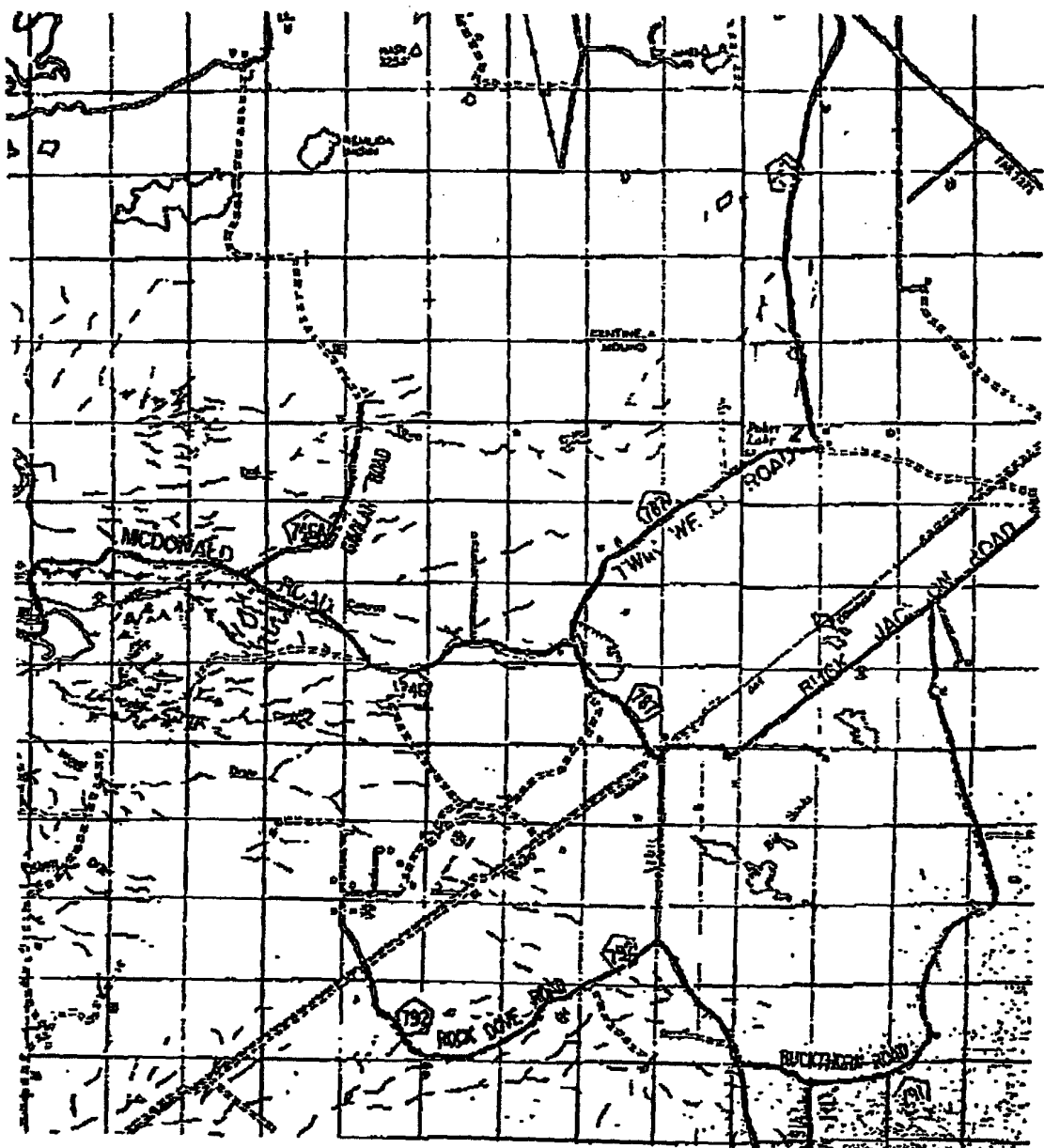
W.O. Number: 1893AA - KJG CD/3

Survey Date: 09-07-2001

Scale: 1" = 2000'

Date: 09-12-2001

**BASS ENTERPRISES  
 PRODUCTION CO.**



**POKER LAKE UNIT #192**  
 Located at 2130' FSL and 380' FWL  
 Section 8, Township 24 South, Range 30 East,  
 N.M.P.M., Eddy County, New Mexico.

**basin**  
**surveys**

focused on excellence  
 in the office

P.O. Box 1786  
 1120 N. West County Rd.  
 Hobbs, New Mexico 88241  
 (505) 393-7315 - Office  
 (505) 392-3074 - Fax  
 basin-surveys.com

W.O. Number: 18934A - KJC CD#3

Survey Date: 09-07-2001

Scale: 1" = 2 MILES

Date: 09-12-2001

**BASS ENTERPRISES  
 PRODUCTION CO.**