

DISTRICT I
1625 N. French Dr., Hobbs, NM 88240

DISTRICT II
811 South First, Artesia, NM 88210

DISTRICT III
1000 Rio Brazos Rd., Aztec, NM 87410

DISTRICT IV
2040 South Pacheco, Santa Fe, NM 87505

State of New Mexico
Energy, Minerals and Natural Resources Department

Form C-102
Revised March 17, 1999

Submit to Appropriate District Office
State Lease - 4 Copies
Fee Lease - 3 Copies

OIL CONSERVATION DIVISION

2040 South Pacheco
Santa Fe, New Mexico 87504-2088

☐ AMENDED REPORT

WELL LOCATION AND ACREAGE DEDICATION PLAT

API Number	Pool Code 47545	Pool Name NASH DRAW (DELAWARE)
Property Code 001796	Property Name POKER LAKE UNIT	Well Number 216
OGRID No. 001801	Operator Name BASS ENTERPRISES PRODUCTION COMPANY	Elevation 3169'

Surface Location

UL or lot No. G	Section 19	Township 24 S	Range 30 E	Lot Idn	Feet from the 1980	North/South line NORTH	Feet from the 1780	East/West line EAST	County EDDY
--------------------	---------------	------------------	---------------	---------	-----------------------	---------------------------	-----------------------	------------------------	----------------

Bottom Hole Location If Different From Surface

UL or lot No.	Section	Township	Range	Lot Idn	Feet from the	North/South line	Feet from the	East/West line	County
Dedicated Acres 40	Joint or Infill N	Consolidation Code	Order No.						

NO ALLOWABLE WILL BE ASSIGNED TO THIS COMPLETION UNTIL ALL INTERESTS HAVE BEEN CONSOLIDATED
OR A NON-STANDARD UNIT HAS BEEN APPROVED BY THE DIVISION

LOT 1 - 40.77 AC.	40.66 AC.	40.65 AC.	40.65 AC.
LOT 2 - 40.87 AC.	40.69 AC.	40.68 AC.	40.66 AC.
LOT 3 - 40.94 AC.	40.69 AC.	40.68 AC.	40.67 AC.
LOT 4 - 41.06 AC.	40.73 AC.	40.70 AC.	40.70 AC.

LAT - N32°12'17.7"
LONG - W103°55'04.7"

3174.3' 3187.5' 3169.4' 3170.8'

1980' 1780'

RECEIVED
JUN 08 2005
ODD-ARTERIA

OPERATOR CERTIFICATION

I hereby certify the information contained herein is true and complete to the best of my knowledge and belief.

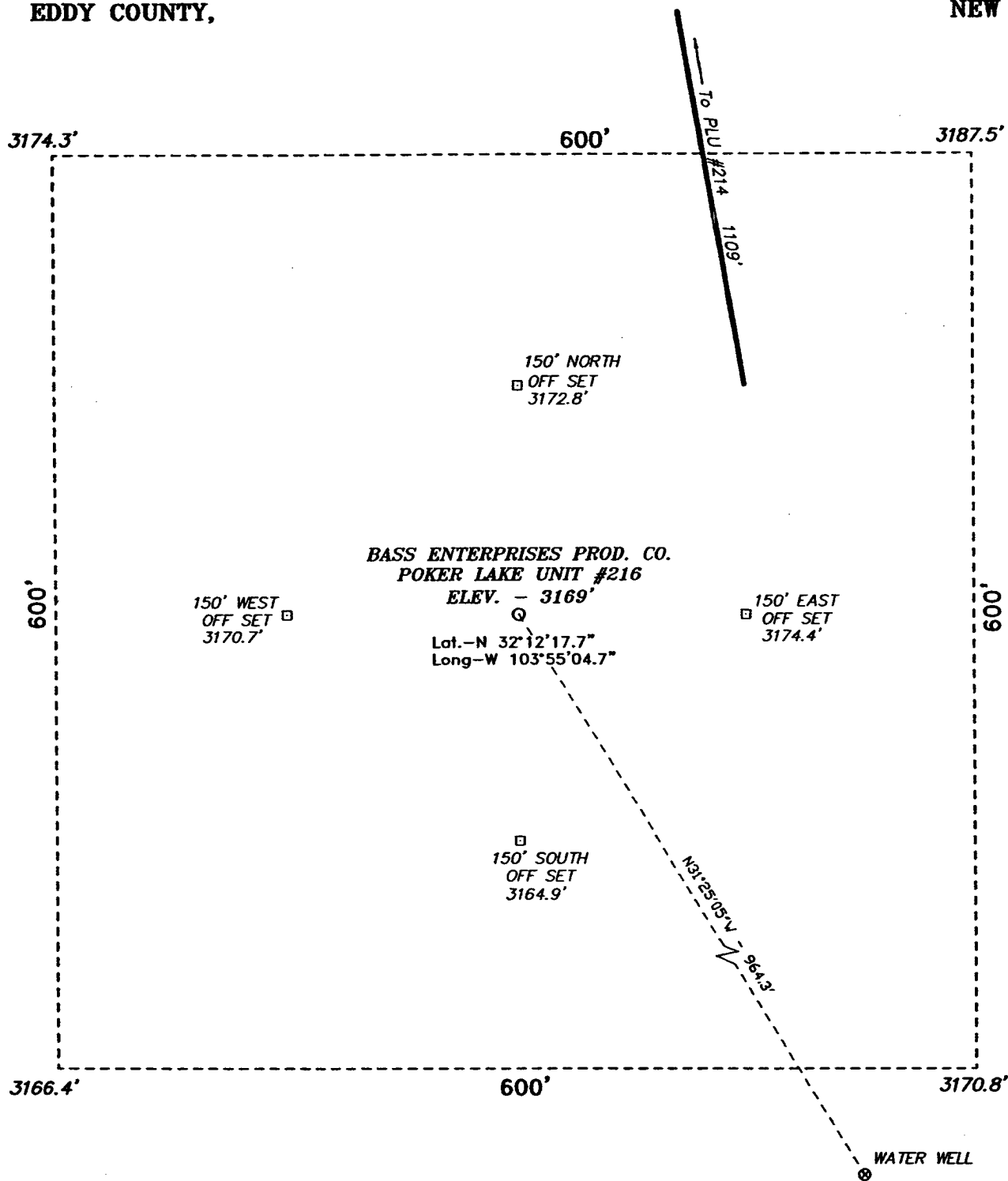
William R. Dannels
Signature
W.R. DANNELS
Printed Name
DIVISION DRILLING SUPT.
Title
9/27/2004
Date

SURVEYOR CERTIFICATION

I hereby certify that the well location shown on this plat was plotted from field notes of actual surveys made by me or under my supervision, and that the same is true and correct to the best of my knowledge.

APR 15 2004
Date Surveyed
Signature & Seal of Professional Surveyor
W.O. No. 4143
Certificate No. Gary L. Jones 7977
BASIN SURVEYS

**SECTION 19, TOWNSHIP 24 SOUTH, RANGE 30 EAST, N.M.P.M.,
EDDY COUNTY, NEW MEXICO.**



DIRECTIONS TO LOCATION:

FROM THE JUNCTION OF CO. RD. 746A AND CO. RD. 748, GO EASTERLY ON CO. RD. 746A FOR APPROX. 1.0 MILE AND NORTHERLY FOR APPROX. 0.75 MILE TO PROPOSED LEASE ROAD TO THE PLU #213 AND THE PLU #216.

BASS ENTERPRISES PRODUCTION CO.

REF: POKER LAKE UNIT No. 216 / Well Pad Topo

THE POKER LAKE UNIT No. 216 LOCATED 1980' FROM
THE NORTH LINE AND 1780' FROM THE EAST LINE OF
SECTION 19, TOWNSHIP 24 SOUTH, RANGE 30 EAST,
N.M.P.M., EDDY COUNTY, NEW MEXICO.

BASIN SURVEYS P.O. BOX 1786-HOBBS, NEW MEXICO

W.O. Number: 4143

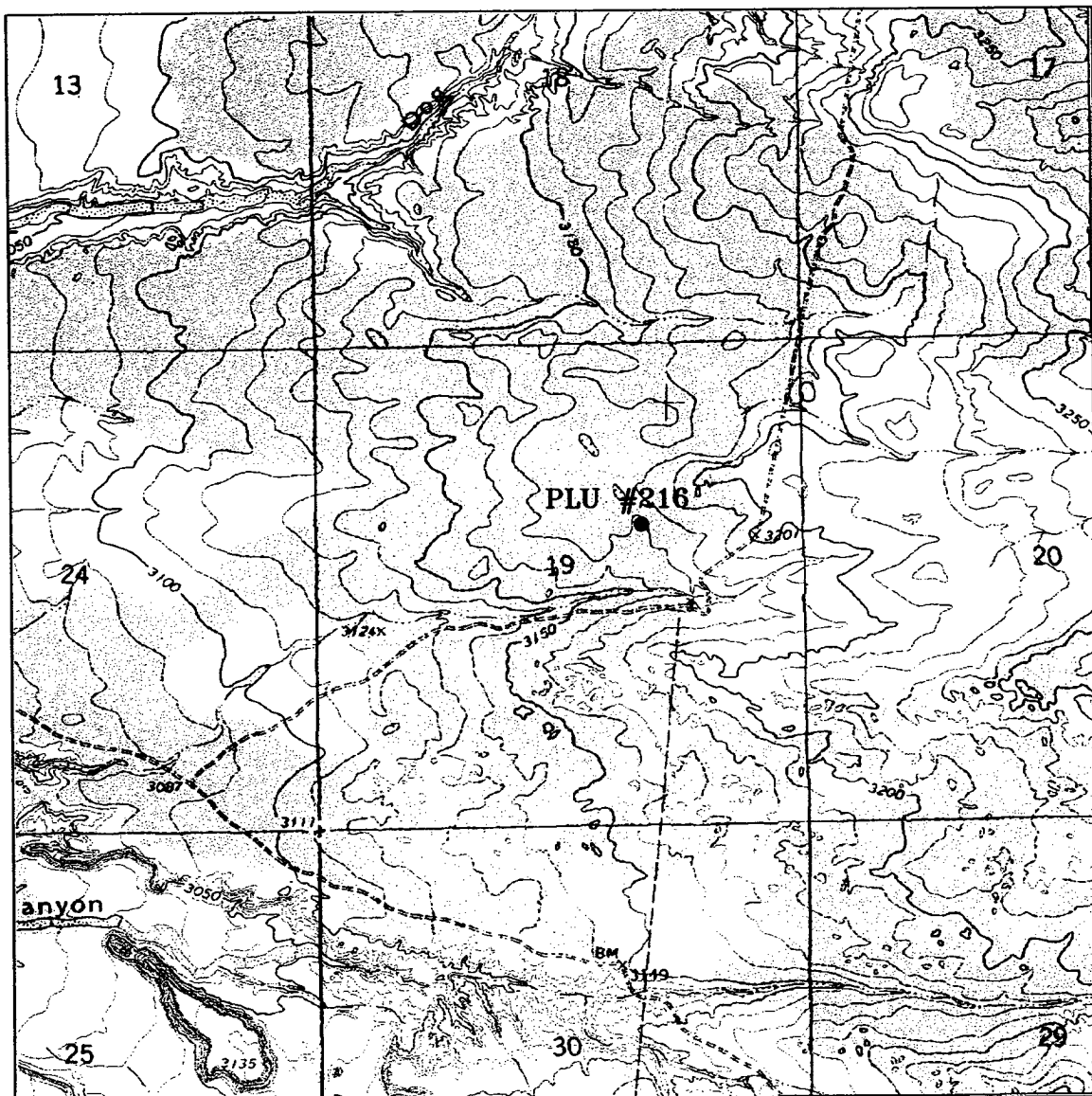
Drawn By: K. GOAD

Date: 04-23-2004

Disk: KJG CD#7 - 4143A.DWG

Survey Date: 04-15-2004

Sheet 1 of 1 Sheets



POKER LAKE UNIT #216

Located at 1980' FNL and 1780' FEL
 Section 19, Township 24 South, Range 30 East,
 N.M.P.M., Eddy County, New Mexico.



focused on excellence
 in the oilfield

P.O. Box 1786
 1120 N. West County Rd.
 Hobbs, New Mexico 88241
 (505) 393-7316 - Office
 (505) 392-3074 - Fax
 basinsurveys.com

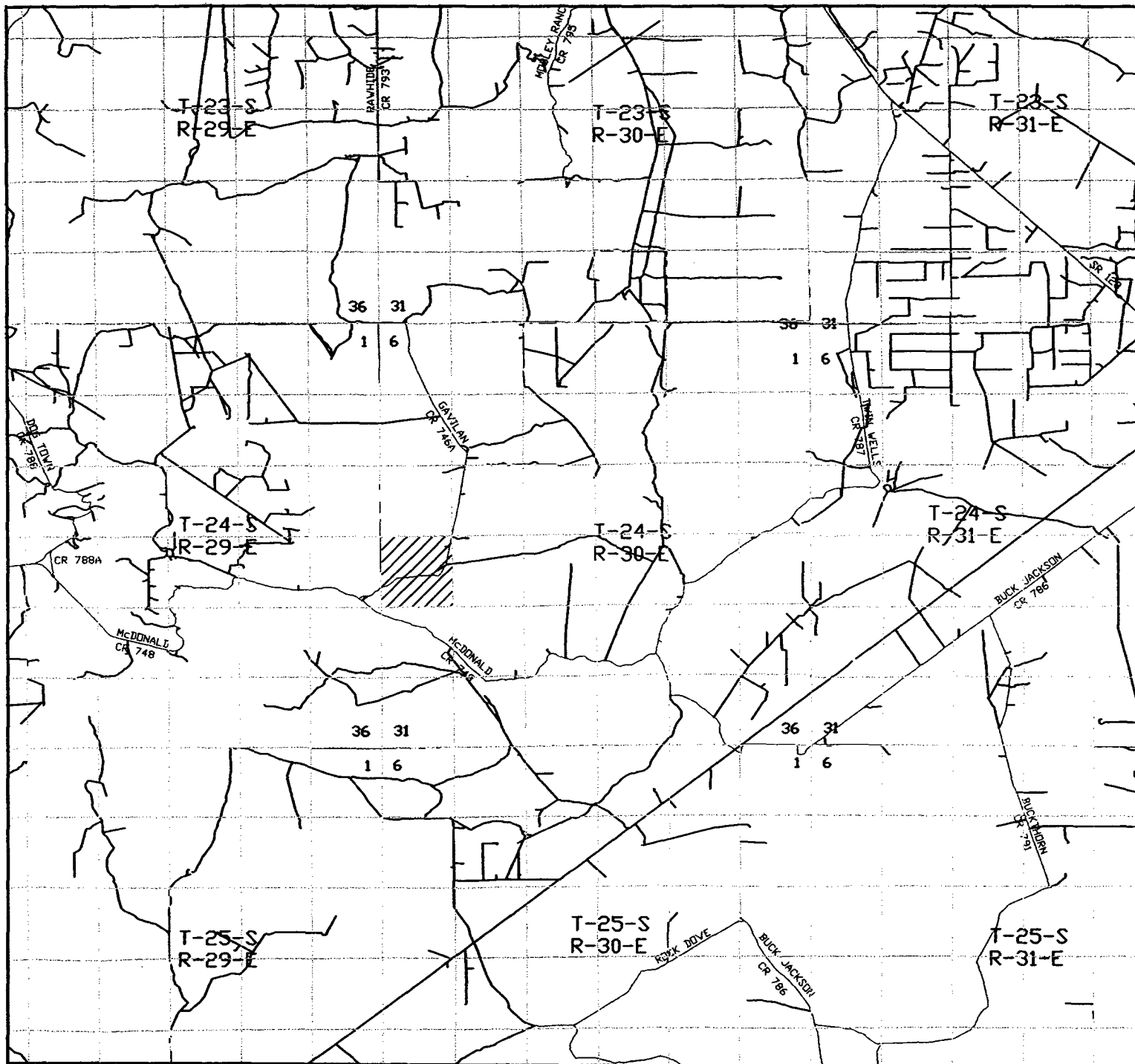
W.O. Number: 4143AA - KJG #7

Survey Date: 04-15-2004

Scale: 1" = 2000'

Date: 04-23-2004

**BASS ENTERPRISES
 PRODUCTION CO.**



POKER LAKE UNIT #216

Located at 1980' FNL and 1780' FEL
Section 19, Township 24 South, Range 30 East,
N.M.P.M., Eddy County, New Mexico.



focused on excellence
in the oilfield

P.O. Box 1786
1120 N. West County Rd.
Hobbs, New Mexico 88241
(505) 393-7316 ~ Office
(505) 392-3074 ~ Fax
basinsurveys.com

W.O. Number: 4143AA - KJG #7

Survey Date: 04-15-2004

Scale: 1" = 2 MILES

Date: 04-23-2004

**BASS ENTERPRISES
PRODUCTION CO.**