

DISTRICT I
1825 N. French Dr., Hobbs, NM 88240

DISTRICT II
811 South First, Artesia, NM 88210

DISTRICT III
1000 Rio Brazos Rd., Aztec, NM 87410

DISTRICT IV
2040 South Pacheco, Santa Fe, NM 87505

State of New Mexico
Energy, Minerals and Natural Resources Department

Form C-102
Revised March 17, 1999

Submit to Appropriate District Office
State Lease - 4 Copies
Fee Lease - 3 Copies

OIL CONSERVATION DIVISION

2040 South Pacheco
Santa Fe, New Mexico 87504-2088

☐ AMENDED REPORT

WELL LOCATION AND ACREAGE DEDICATION PLAT

API Number	Pool Code 47545	Pool Name NASH DRAW DELAWARE
Property Code 001796	Property Name POKER LAKE UNIT	Well Number 217
OGRID No. 001801	Operator Name BASS ENTERPRISES PRODUCTION COMPANY	Elevation 3203'

Surface Location

UL or lot No.	Section	Township	Range	Lot Idn	Feet from the	North/South line	Feet from the	East/West line	County
I	19	24 S	30 E		1650	SOUTH	660	EAST	EDDY

Bottom Hole Location If Different From Surface

UL or lot No.	Section	Township	Range	Lot Idn	Feet from the	North/South line	Feet from the	East/West line	County
Dedicated Acres 40	Joint or Infill N	Consolidation Code	Order No.						

NO ALLOWABLE WILL BE ASSIGNED TO THIS COMPLETION UNTIL ALL INTERESTS HAVE BEEN CONSOLIDATED
OR A NON-STANDARD UNIT HAS BEEN APPROVED BY THE DIVISION

				RECEIVED APR 18 2005 ODD-ARTTEAM
LOT 1 - 40.77 AC.	40.66 AC.	40.65 AC.	40.65 AC.	
LOT 2 - 40.87 AC.	40.69 AC.	40.68 AC.	40.66 AC.	
LOT 3 - 40.94 AC.	40.69 AC.	40.68 AC.	40.67 AC.	LAT - N32°12'01.2" LONG - W103°54'51.6" 3194.7' 3194.8' 3199.4' 3194.8' 660' 1650'
LOT 4 - 41.06 AC.	40.73 AC.	40.70 AC.	40.70 AC.	

OPERATOR CERTIFICATION

I hereby certify the the information contained herein is true and complete to the best of my knowledge and belief.

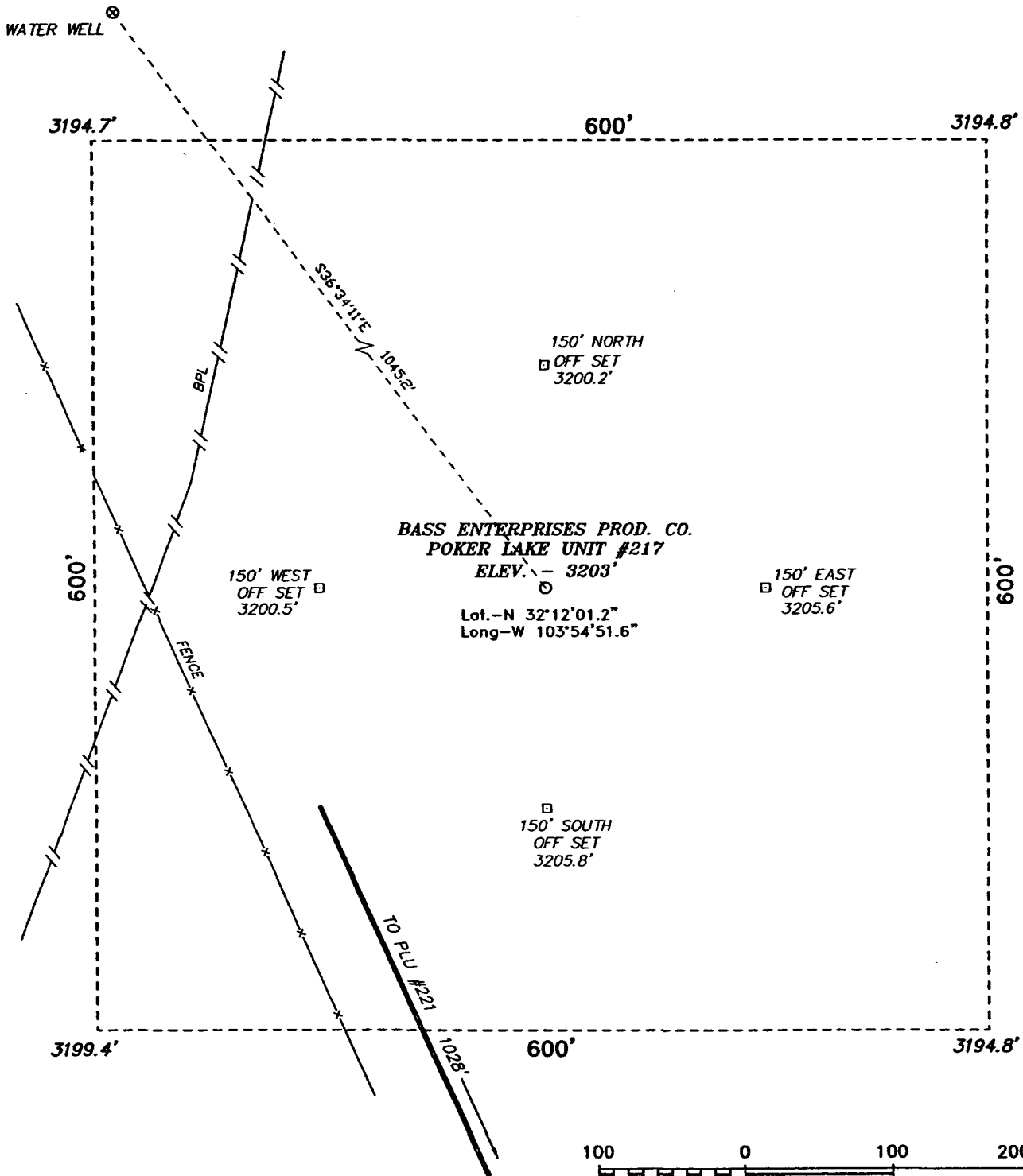
William R. Dannels
Signature
W.R. DANNELS
Printed Name
DIVISION DRILLING SUPT.
Title
Nov. 11, 2004
Date

SURVEYOR CERTIFICATION

I hereby certify that the well location shown on this plat was plotted from field notes of actual surveys made by me or under my supervision, and that the same is true and correct to the best of my belief.

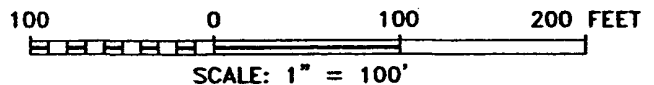
APRIL 18, 2004
Date Surveyed
Signature & Seal of Professional Surveyor
W.O. Jones
Certificate No. Gary B. Jones 1977
BASIN SURVEYS

**SECTION 19, TOWNSHIP 24 SOUTH, RANGE 30 EAST, N.M.P.M.,
EDDY COUNTY, NEW MEXICO.**



DIRECTIONS TO LOCATION:

FROM THE JUNCTION OF CO. RD. 746A AND CO. RD. 748, GO EASTERLY ON CO. RD. 746A FOR APPROX. 1.0 MILE TO A POINT APPROX. 1500 FEET NORTH OF PROPOSED LOCATION.



BASIN SURVEYS P.O. BOX 1786 - HOBBS, NEW MEXICO

W.O. Number: 4144

Drawn By: K. GOAD

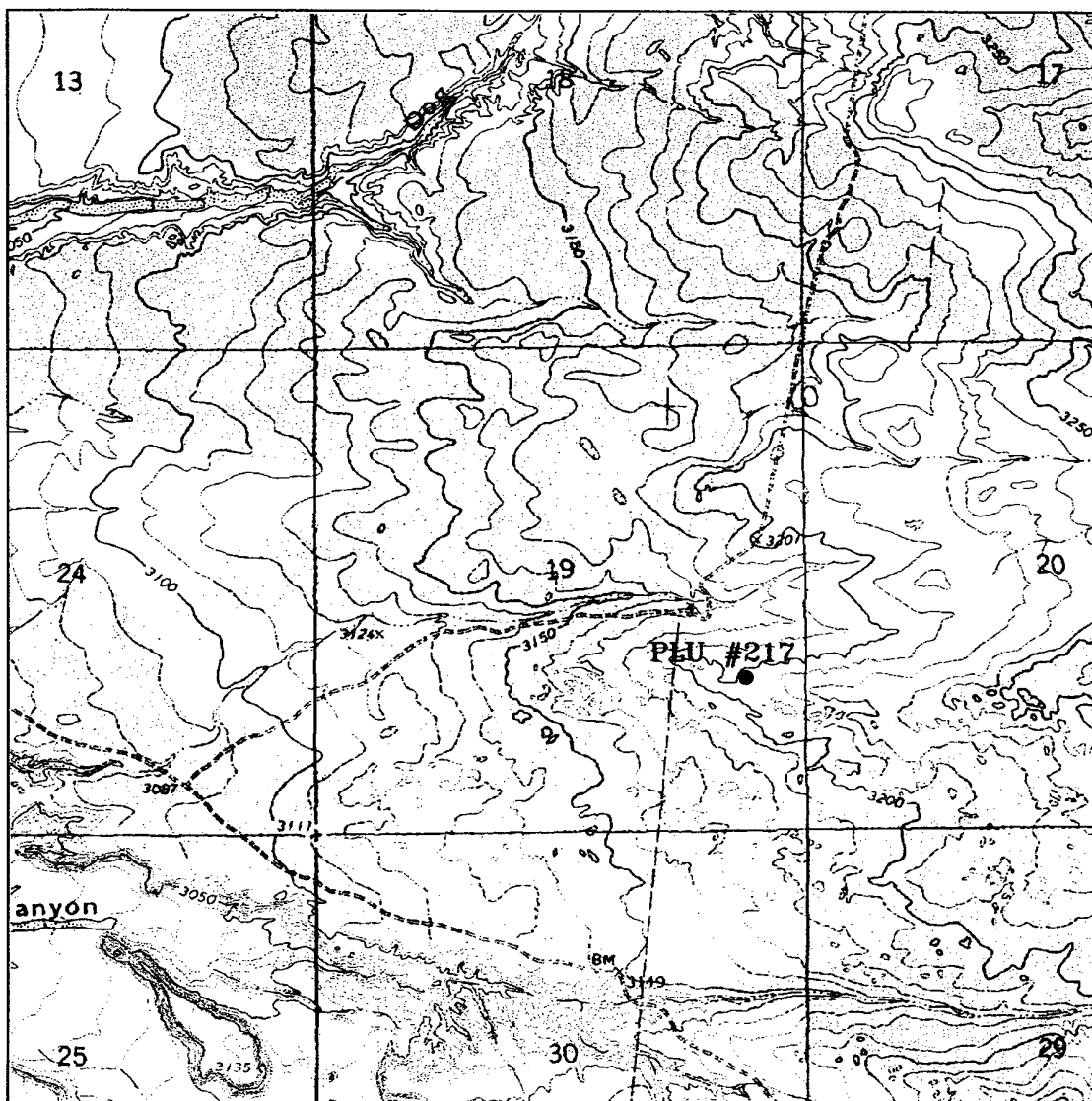
Date: 04-23-2004 | Disk: KJG CD#7 - 4144A.DWG

BASS ENTERPRISES PRODUCTION CO.

REF: POKER LAKE UNIT No. 217 / Well Pad Topo

THE POKER LAKE UNIT No. 217 LOCATED 1650' FROM
THE SOUTH LINE AND 660' FROM THE EAST LINE OF
SECTION 19, TOWNSHIP 24 SOUTH, RANGE 30 EAST,
N.M.P.M., EDDY COUNTY, NEW MEXICO.

Survey Date: 04-15-2004 | Sheet 1 of 1 Sheets



POKER LAKE UNIT #217

Located at 1650' FSL and 660' FEL
 Section 19, Township 24 South, Range 30 East,
 N.M.P.M., Eddy County, New Mexico.

basin
surveys

focused on excellence
 in the oilfield

P.O. Box 1786
 1120 N. West County Rd.
 Hobbs, New Mexico 88241
 (505) 393-7316 - Office
 (505) 392-3074 - Fax
basinsurveys.com

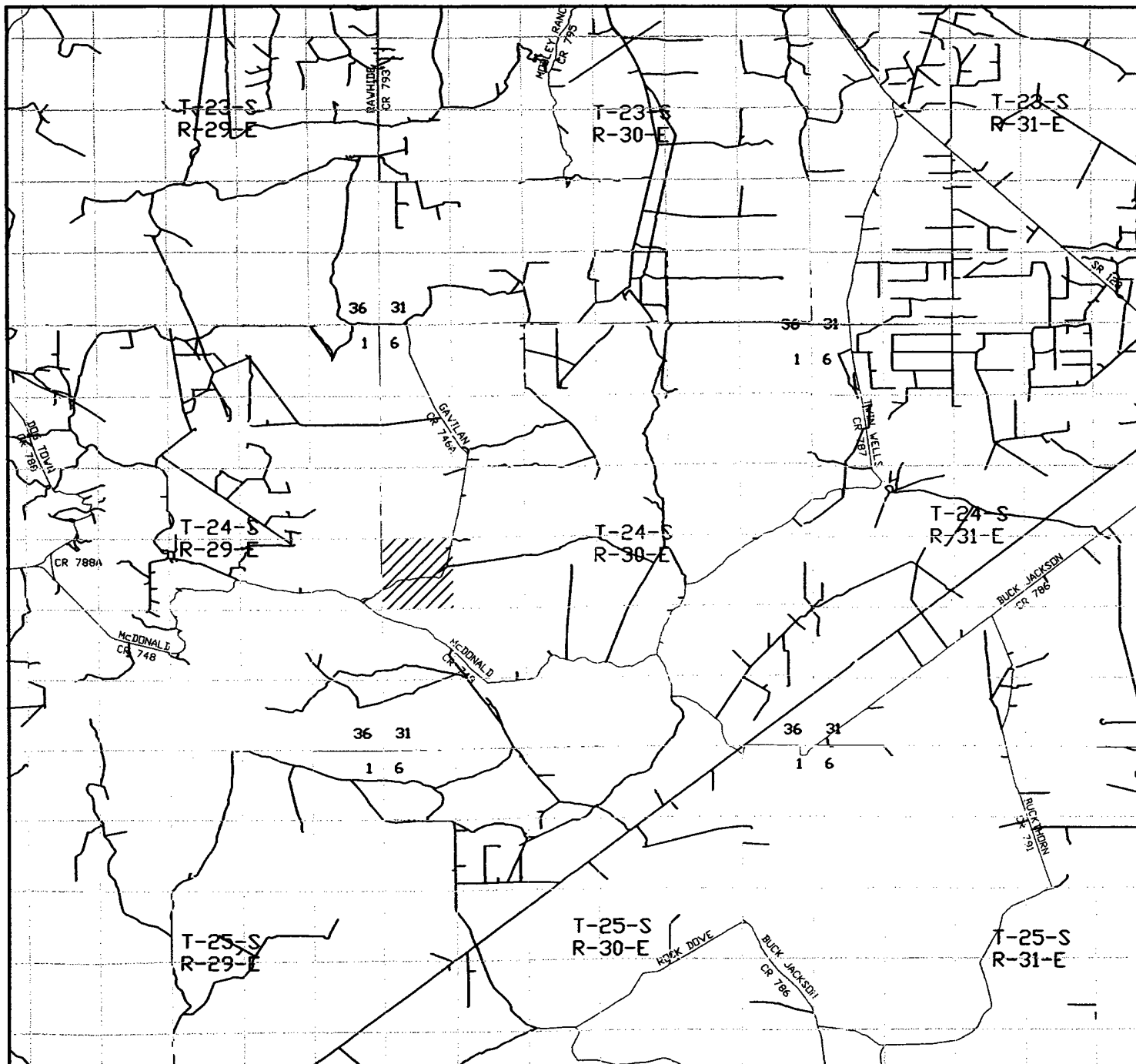
W.O. Number: 4144AA - KJG #7

Survey Date: 04-15-2004

Scale: 1" = 2000'

Date: 04-23-2004

**BASS ENTERPRISES
 PRODUCTION CO.**



POKER LAKE UNIT #217
 Located at 1650' FSL and 660' FEL
 Section 19, Township 24 South, Range 30 East,
 N.M.P.M., Eddy County, New Mexico.

basin
surveys
 focused on excellence
 in the oilfield

P.O. Box 1786
 1120 N. West County Rd.
 Hobbs, New Mexico 88241
 (505) 393-7316 - Office
 (505) 392-3074 - Fax
 basinsurveys.com

W.O. Number: 4144AA - KJG #7

Survey Date: 04-15-2004

Scale: 1" = 2 MILES

Date: 04-23-2004

BASS ENTERPRISES
PRODUCTION CO.