

**District I**

1625 N. French Dr., Hobbs, NM 88240

**District II**

1391 W. Grand Avenue, Artesia, NM 88210

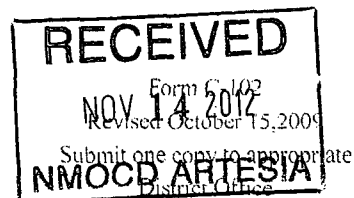
**District III**

1000 Rio Brazos Rd., Aztec, NM 87410

**District IV**

1220 S. St. Francis Dr., Santa Fe, NM 87505

State of New Mexico  
Energy, Minerals & Natural Resources Department  
**OIL CONSERVATION DIVISION**  
1220 South St. Francis Dr.  
Santa Fe, NM 87505

☒ AMENDED REPORT**WELL LOCATION AND ACREAGE DEDICATION PLAT**

<sup>1</sup> API Number 30-015-39994	<sup>2</sup> Pool Code 40299	<sup>1</sup> Pool Name Lost Tank; Delaware
<sup>3</sup> Property Code 39007	<sup>3</sup> Property Name SHAQTUS 26 STATE COM	<sup>6</sup> Well Number 3H
<sup>4</sup> OGRID No. 6137	<sup>5</sup> Operator Name DEVON ENERGY PRODUCTION COMPANY, L.P.	<sup>7</sup> Elevation 3525.2

<sup>10</sup> Surface Location

UL or lot no.	Section	Township	Range	Lot Idn	Feet from the	North/South line	Feet from the	East/West line	County
B	35	21 S	31 E		330	NORTH	2000	EAST	EDDY

<sup>11</sup> Bottom Hole Location If Different From Surface

UL or lot no.	Section	Township	Range	Lot Idn	Feet from the	North/South line	Feet from the	East/West line	County
B	26	21 S	31 E		330	NORTH	1980	EAST	EDDY

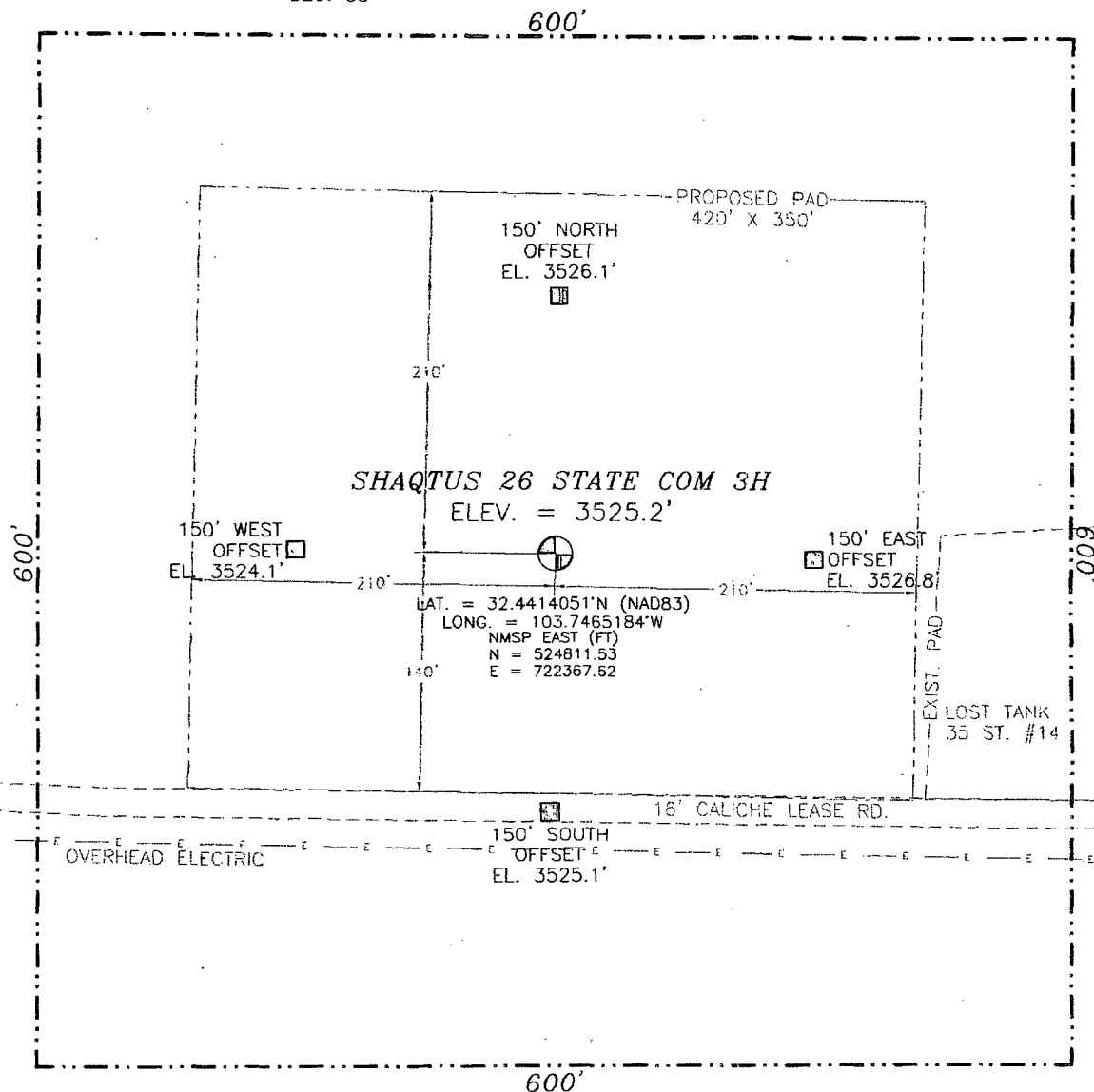
<sup>12</sup> Dedicated Acres	<sup>13</sup> Joint or Infill	<sup>14</sup> Consolidation Code	<sup>15</sup> Order No.
160			

No allowable will be assigned to this completion until all interests have been consolidated or a non-standard unit has been approved by the division.

<p>NW CORNER SEC. 26 LAT. = 32.4568370°N LONG. = 103.7571414°W NMSP EAST (FT) N = 530407.84 E = 719060.11</p> <p>SECTION CORNER LAT. = 32.4423165°N LONG. = 103.7571513°W NMSP EAST (FT) N = 525125.24 E = 719085.58</p> <p>SW CORNER SEC. 35 LAT. = 32.4278020°N LONG. = 103.7571637°W NMSP EAST (FT) N = 519844.84 E = 719110.23</p>	<p><b>SHAQTUS 26 STATE COM 3H</b> ELEV. = 3525.2' LAT. = 32.4414051°N (NAD83) LONG. = 103.7465184°W NMSP EAST (FT) N = 524811.53 E = 722367.62</p>	<p><b><sup>17</sup> OPERATOR CERTIFICATION</b> I hereby certify that the information contained herein is true and complete to the best of my knowledge and belief, and that this organization either owns a working interest or undivided mineral interest in the land including the proposed bottom hole location or has a right to drill this well at this location pursuant to a contract with an owner of such a mineral or working interest, or to a voluntary pooling agreement or a compulsory pooling order heretofore entered by the division.</p> <p>Signature: <i>[Signature]</i> Date: 11/13/2012</p> <p>Printed Name: Judy A. Barnett Regulatory Specialist</p> <p><b><sup>18</sup> SURVEYOR CERTIFICATION</b> I hereby certify that the well location shown on this plat was plotted from field notes of actual surveys made by me or under my supervision, and that the same is true and correct to the best of my belief.</p> <p>DECEMBER 12, 2012 VAF</p> <p>Date of Survey: <i>[Signature]</i></p> <p>Signature and Seal of Professional Surveyor: <i>[Signature]</i> Certificate Number: FIDMON E. JARAMILLO, PLS 12797 SURVEY NO. 745</p>
----------------------------------------------------------------------------------------------------------------------------------------------------------------------------------------------------------------------------------------------------------------------------------------------------------------------------------------------------------------------------------------------------	----------------------------------------------------------------------------------------------------------------------------------------------------------------------------	-----------------------------------------------------------------------------------------------------------------------------------------------------------------------------------------------------------------------------------------------------------------------------------------------------------------------------------------------------------------------------------------------------------------------------------------------------------------------------------------------------------------------------------------------------------------------------------------------------------------------------------------------------------------------------------------------------------------------------------------------------------------------------------------------------------------------------------------------------------------------------------------------------------------------------------------------------------------------------------------------------------------------------------------------------------------------------------------------------------------------------------------------------------------------------------

SECTION 35, TOWNSHIP 21 SOUTH, RANGE 31 EAST, N.M.P.M.  
EDDY COUNTY, STATE OF NEW MEXICO

SEC. 26  
SEC. 35



0 10 50 100 200

SCALE 1" = 100'

**DIRECTIONS TO LOCATION**

FROM THE INTERSECTION OF U.S. 62/180 (HOBBS HWY.) AND LOUIS WHITLOCK ROAD TO WIPP SITE AT 0.85 MILES EAST OF MILE MARKER 64 ON U.S. 62/180 GO SOUTH ON LOUIS WHITLOCK ROAD 7.7 MILES TO A CALICHE LEASE RD ON LEFT (EAST) ABOUT 0.7 MILES SOUTH OF MILE MARKER 6 GO EAST ON CALICHE RD 1.35 MILES TO CALICHE ROAD ON LEFT (NORTH) GO ON CALICHE RD NORTH 1.0 MILES TO CALICHE ROAD ON RIGHT (EAST) ON CALICHE ROAD 0.2 MILES, SITE IS ABOUT 150 FT ON LEFT (NORTH)

DEVON ENERGY PRODUCTION COMPANY, L.P.

**SHAQTUS 26 STATE COM 3H**

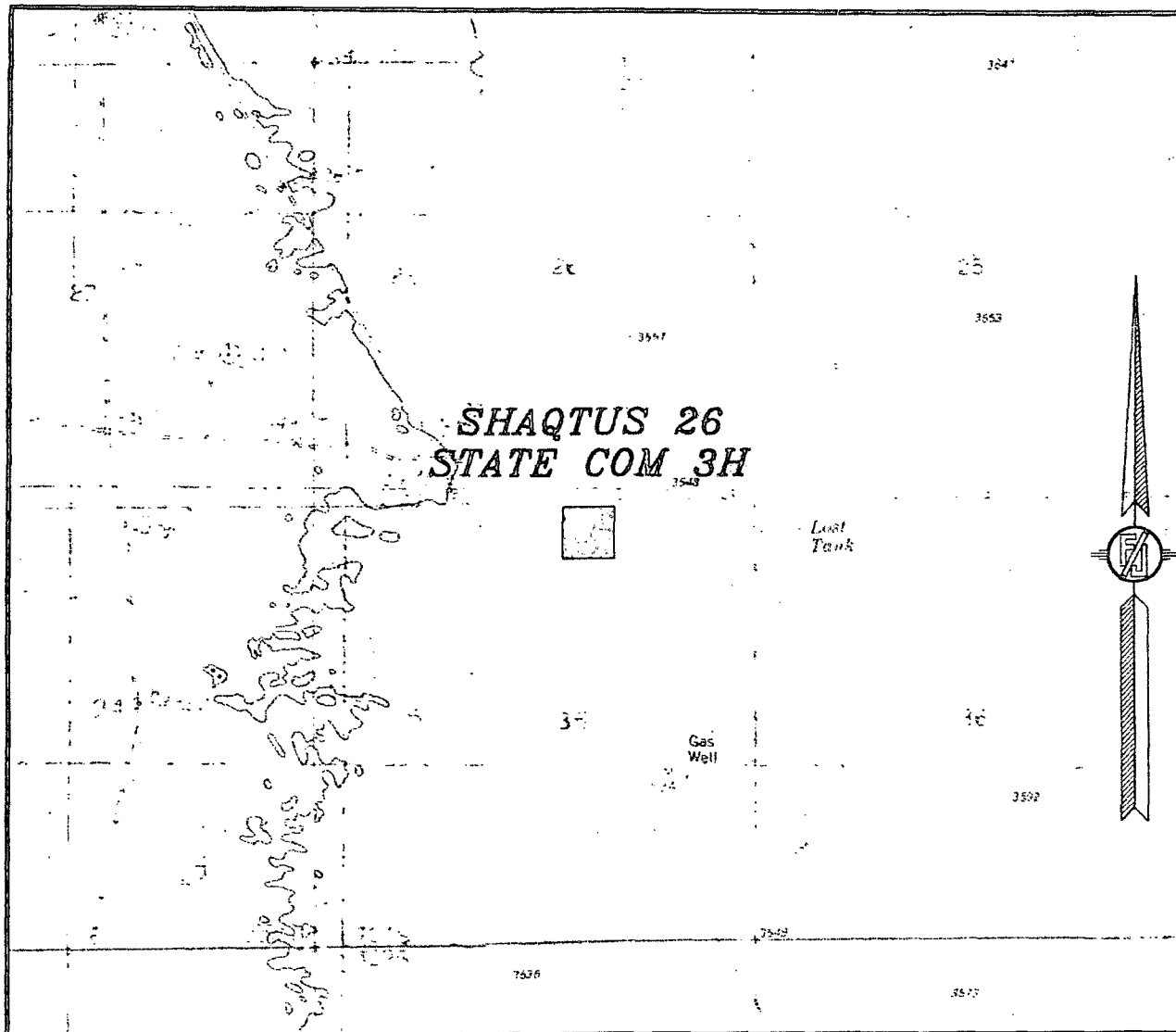
LOCATED 330 FT. FROM THE NORTH LINE  
AND 2000 FT. FROM THE EAST LINE OF  
SECTION 35, TOWNSHIP 21 SOUTH,  
RANGE 31 EAST, N.M.P.M.  
EDDY COUNTY, STATE OF NEW MEXICO

DECEMBER 17, 2011

SURVEY NO. 745

MADRON SURVEYING, INC. 301 SOUTH CANAL (575) 234-3341 CARLSBAD, NEW MEXICO

35, TOWNSHIP 21 SOUTH, RANGE 31 EAST, N.M.P.M.  
EDDY COUNTY, STATE OF NEW MEXICO  
LOCATION VERIFICATION MAP



CONTOUR INTERVAL:  
LIVINGSTON RIDGE

NOT TO SCALE

DEVON ENERGY PRODUCTION COMPANY, L.P.  
SHAQTUS 26 STATE COM 3H

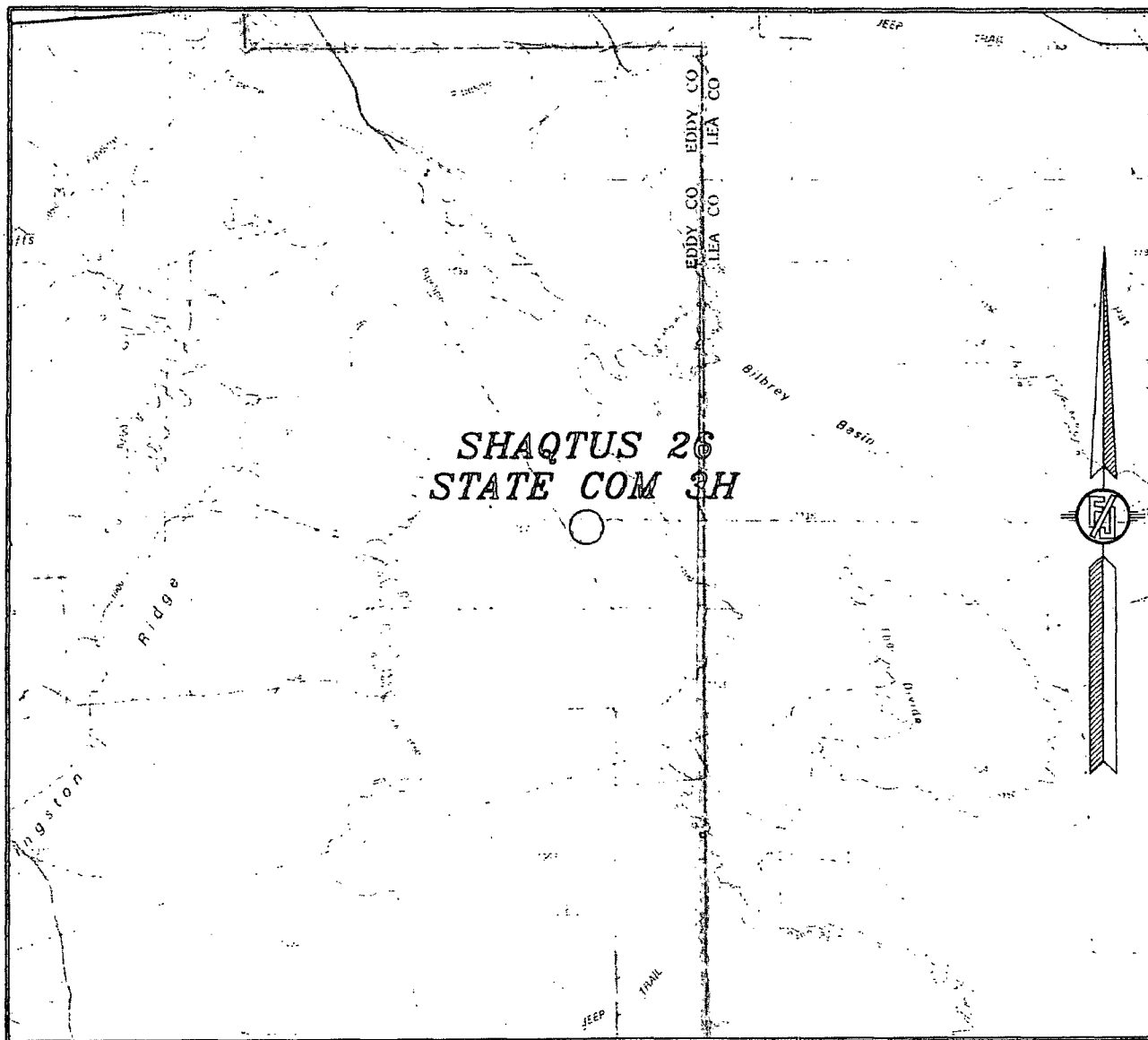
LOCATED 330 FT. FROM THE NORTH LINE  
AND 2000 FT. FROM THE EAST LINE OF  
SECTION 35, TOWNSHIP 21 SOUTH,  
RANGE 31 EAST, N.M.P.M.  
EDDY COUNTY, STATE OF NEW MEXICO

DECEMBER 17, 2011

*SURVEY NO. 745*

MADRON SURVEYING, INC. 301 SOUTH CANAL CARLSBAD, NEW MEXICO  
(575) 234-3341

SECTION 35, TOWNSHIP 21 SOUTH, RANGE 31 EAST, N.M.P.M.  
EDDY COUNTY, STATE OF NEW MEXICO  
VICINITY MAP



NOT TO SCALE

DEVON ENERGY PRODUCTION COMPANY, L.P.  
**SHAQTUS 26 STATE COM 3H**

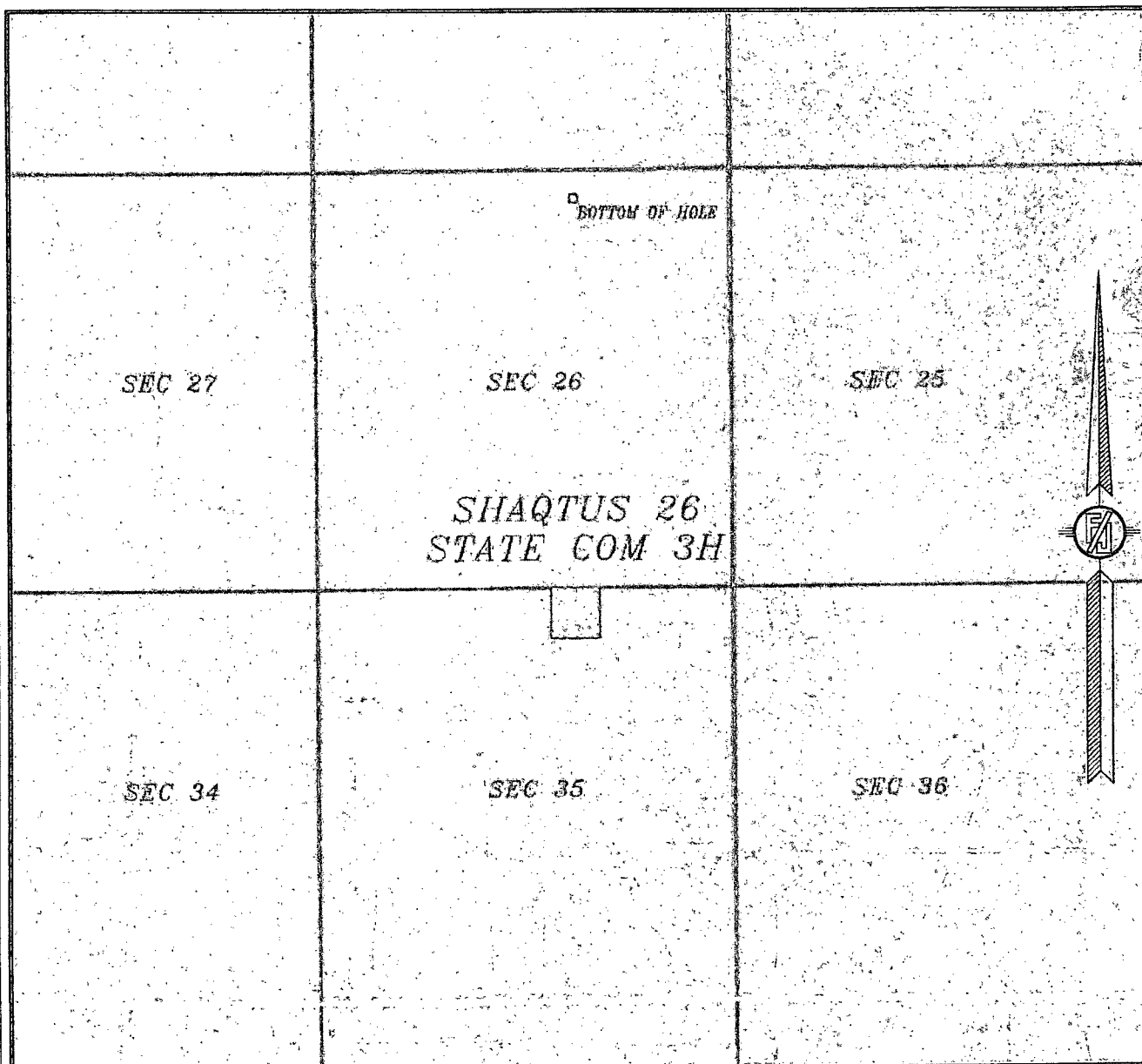
LOCATED 330 FT. FROM THE NORTH LINE  
AND 2000 FT. FROM THE EAST LINE OF  
SECTION 35, TOWNSHIP 21 SOUTH,  
RANGE 31 EAST, N.M.P.M.  
EDDY COUNTY, STATE OF NEW MEXICO

DECEMBER 17, 2011

SURVEY NO. 745

MADRON SURVEYING, INC. 301 SOUTH CANAL (575) 234-3341 CARLSBAD, NEW MEXICO

SECTION 35, TOWNSHIP 21 SOUTH, RANGE 31 EAST, N.M.P.M.  
EDDY COUNTY, STATE OF NEW MEXICO  
AERIAL PHOTO



NOT TO SCALE  
AERIAL PHOTO:  
GOOGLE EARTH  
OCT, 2010

DEVON ENERGY PRODUCTION COMPANY, L.P.  
**SHAQTUS 26 STATE COM 3H**  
LOCATED 330 FT. FROM THE NORTH LINE  
AND 2000 FT. FROM THE EAST LINE OF  
SECTION 35, TOWNSHIP 21 SOUTH,  
RANGE 31 EAST, N.M.P.M.  
EDDY COUNTY, STATE OF NEW MEXICO

DECEMBER 17, 2011

SURVEY NO. 745

MADRON SURVEYING, INC. 301 SOUTH CANAL (575) 234-3341 CARLSBAD, NEW MEXICO