

NEW MEXICO OIL CONSERVATION DIVISION
SOUTHEAST NEW MEXICO PACKER LEAKAGE TEST

Revised 11/23/11

Operator YATES Petroleum Corp. Well API # 30-005-63244
Location Of Well: Unit I Section 4 Township 9S Range 26E County CHAVES
Well Name & No. ENGWALL RL Fed. 3

	Name of Reservoir or Pool	Type of Prod. (Oil or Gas)	Method of Prod. (Flow Art. Lift)	Prod. Medium (Tbg. Or Cag.)	Choke Size
Upper Completion	<u>Wolf Camp</u>	<u>GAS</u>	<u>Flow</u>	<u>CSG</u>	<u>open</u>
Lower Completion	<u>Ordovician</u>	<u>GAS</u>	<u>Flow</u>	<u>Tbg</u>	<u>open</u>

FLOW TEST NO. 1

Both zones shut-in at (hour, date): 10:30 AM 10/29/2012

Well opened at (hour, date): 12:30 PM 10/29/2012

Indicate by (X) the zone producing.....

Pressure at beginning of test.....

Stabilized? (Yes or No).....

Maximum pressure during test.....

Minimum pressure during test.....

Pressure at conclusion of test.....

Pressure change during test (Maximum minus Minimum).....

Was pressure change an increase or a decrease?.....

Well closed at (hour, date): 10:30 AM 10/30/2012

Oil Production 0 bbls; Grav. 0 Gas Production 14 MCF; GOR N/A

During Test: 0 bbls; Grav. 0 ; During Test 14 MCF; GOR N/A

Remarks:

FLOW TEST NO. 2

Both zones shut-in at (hour, date): 10:30 AM 10/30/2012

Well opened at (hour, date): 11:00 AM 10/30/2012

Indicate by (X) the zone producing.....

Pressure at beginning of test.....

Stabilized? (Yes or No).....

Maximum pressure during test.....

Minimum pressure during test.....

Pressure at conclusion of test.....

Pressure change during test (Maximum minus Minimum).....

Was pressure change an increase or a decrease?.....

Well closed at (hour, date): 10:15 AM 10/31/2012

Oil Production 0 bbls; Grav. 0 Gas Production 13 MCF; GOR N/A

During Test: 0 bbls; Grav. 0 ; During Test 13 MCF; GOR N/A

Remarks:

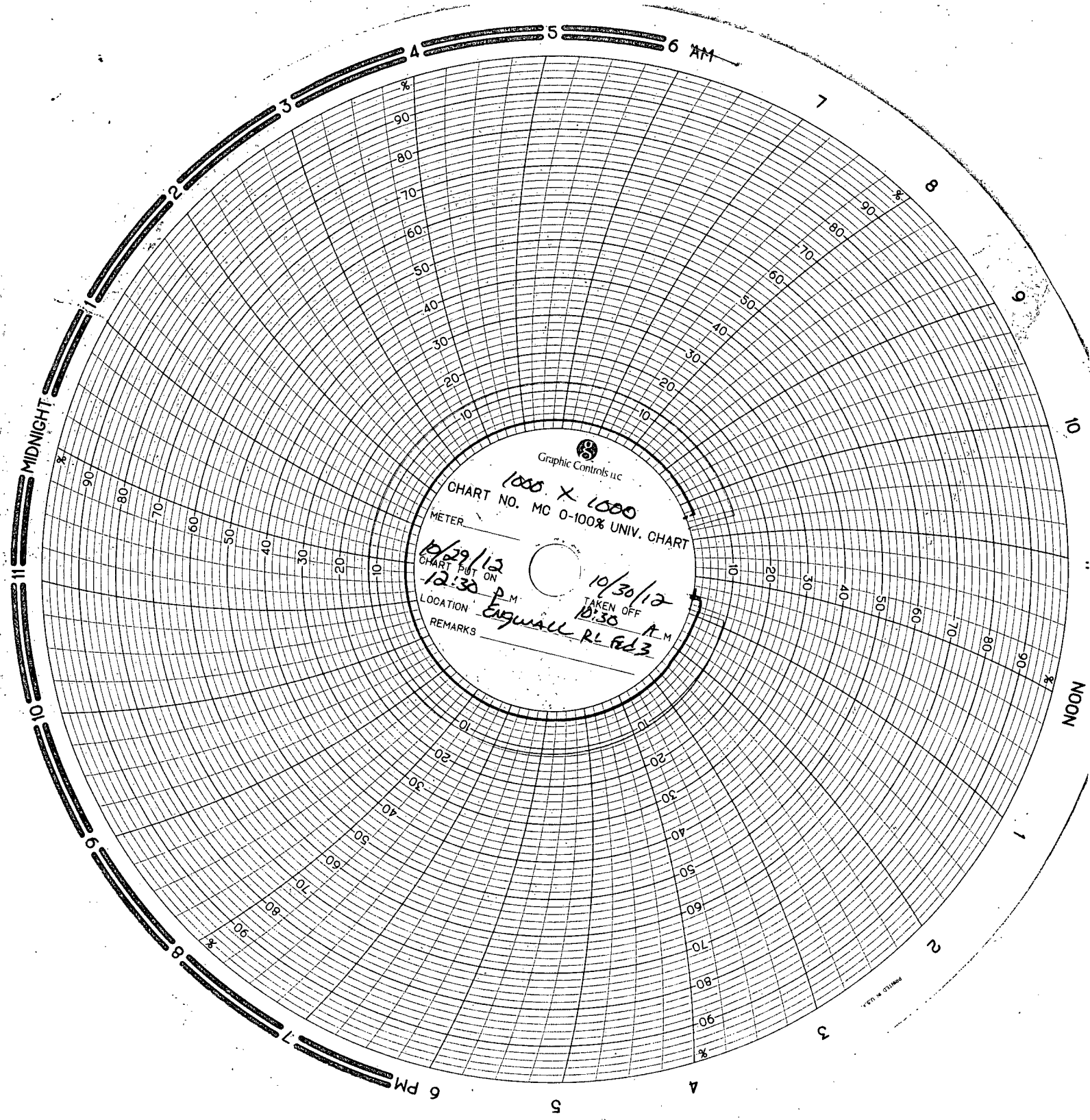
I hereby certify that the information herein contained is true and complete to the best of my knowledge.

Approved 12-18 2012 Operator YATES Petroleum Corp.
New Mexico Oil Conservation Division

By Richard Innes Title Measurement Tech II

Title COMPLIANCE OFFICER E-mail Address jdeck@westoffice.net

Date 11/7/2012



1000 X 1000
CHART NO. MC 0-100% UNIV. CHART
METER

10/29/12
CHART PUT ON
12:30 P.M.
LOCATION Engwall RL Fed 3
REMARKS
10/30/12
TAKEN OFF
10:30 A.M.

Graphic Controls LLC

U.S.A.

