

Submit 1 Copy To Appropriate District Office
District I - (575) 393-6161
1625 N. French Dr., Hobbs, NM 88240
District II - (575) 748-1283
811 S. First St., Artesia, NM 88210
District III - (505) 334-6178
1000 Rio Brazos Rd., Aztec, NM 87410
District IV - (505) 476-3460
1220 S. St. Francis Dr., Santa Fe, NM 87505

State of New Mexico
Energy, Minerals and Natural Resources

Form C-103
Revised August 1, 2011

OIL CONSERVATION DIVISION
1220 South St. Francis Dr.
Santa Fe, NM 87505

WELL API NO. 30-015-34652
5. Indicate Type of Lease STATE <input checked="" type="checkbox"/> FEE <input type="checkbox"/>
6. State Oil & Gas Lease No. NM103570
7. Lease Name or Unit Agreement Name JACK IN THE BOX FEDERAL
8. Well Number 1
9. OGRID Number 230387
10. Pool name or Wildcat MORROW/CANYON

SUNDRY NOTICES AND REPORTS ON WELLS
(DO NOT USE THIS FORM FOR PROPOSALS TO DRILL OR TO DEEPEN OR PLUG BACK TO A DIFFERENT RESERVOIR. USE "APPLICATION FOR PERMIT" (FORM C-101) FOR SUCH PROPOSALS.)

1. Type of Well: Oil Well ☐ Gas Well ☒ Other

2. Name of Operator
PARALLEL PETROELUM LLC (230387)

3. Address of Operator
P. O. BOX 10587, MIDLAND, TX 79702

4. Well Location
Unit Letter M : 660 feet from the S line and 760 feet from the W line
Section 14 Township 19S Range 21E NMPM County EDDY

11. Elevation (Show whether DR, RKB, RT, GR, etc.)
4,200' GL

12. Check Appropriate Box to Indicate Nature of Notice, Report or Other Data

NOTICE OF INTENTION TO:
PERFORM REMEDIAL WORK ☐ PLUG AND ABANDON ☐
TEMPORARILY ABANDON ☐ CHANGE PLANS ☐
PULL OR ALTER CASING ☐ MULTIPLE COMPL ☐
DOWNHOLE COMMINGLE ☐

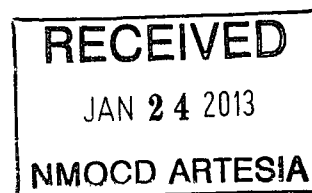
SUBSEQUENT REPORT OF:
REMEDIAL WORK ☐ ALTERING CASING ☐
COMMENCE DRILLING OPNS. ☐ P AND A ☐
CASING/CEMENT JOB ☐

OTHER: T&A ☒ OTHER: T&A ☒

13. Describe proposed or completed operations. (Clearly state all pertinent details, and give pertinent dates, including estimated date of starting any proposed work). SEE RULE 19.15.7.14 NMAC. For Multiple Completions: Attach wellbore diagram of proposed completion or recompletion.

See attached documents for work that has been done. No Proposed schematic is available at this time because no decision has been made for further completion of this well. Possible completion of Canyon Sands interval (6451' - 6806') is yet to be determined. Decision to be made after log analysis has been completed.

*DENIED - THIS IS A FEDERAL WELL.
RESUBMIT PAPERWORK TO THE BLM.
RF 1/29/13*



Spud Date: 5/4/2006

Rig Release Date: 6/16/2006

I hereby certify that the information above is true and complete to the best of my knowledge and belief.

SIGNATURE *Rick Petersen* TITLE Engineer DATE 1/18/13

Type or print name Rick Petersen E-mail address: rpetersen@plll.com PHONE: 432-688-3676
For State Use Only

APPROVED BY: _____ TITLE _____ DATE _____
Conditions of Approval (if any): _____

Jack in the Box Federal #1 Description of Work

12/17/2012

- CREWS TO LOCATION; DISCUSS JOB PROCEDURE; MOVE IN AND RIG UP PRO WIRELINE, RUN IN HOLE W/ GAUGE RING, RUN IN HOLE W/ 2.313 "X" BLANKING PLUG; LOAD TBG W/ 40 BBL & TEST PLUG; RELEASE ON/OFF TOOL & LAY DOWN 1 JOINT; RIG UP SWAB, MAKE 6 RUNS RECOVERING 17 BBLs. SECURE WELL & SHUT DOWN OVER NIGHT.

12/18/2012

- CREW TO LOCATION; DISCUSS TASK TO BE COMPLETED; RIG UP SWAB & MAKE 32 SWAB RUNS RECOVERING 197 BBL (214 BBL TOTAL); RIG DOWN SWAB, SECURE WELL & SHUT DOWN OVER NIGHT.

12/19/2012

- CREW TO LOCATION; DISCUSS DAILY TASK; PICK UP & RUN IN HOLE W/ SWAB, MADE 6 RUNS RECOVERED 31 BBLs (244 TOTAL); PICK UP 1-2 7/8 JOINT, LATCH ON/OFF TOOL, RELEASE PACKER; PULL OUT OF HOLE W/ 10-2 7/8 JTS. SHUT DOWN DUE TO HIGH WINDS. RESCHEDULED LOGGING FOR 10:30 AM 12/20/2012. WILL RESUME TRIP OUT OF HOLE W/ TBG 6:30 AM.

12/20/2012

- CREW TO LOCATION; PULL OUT OF HOLE W/ TBG, LEFT 100.5' OF TCP GUNS IN HOLE (1-2 7/8 N80 JOINT, SUB COLLAR, PROP GUNS-BLANK, LOADED GUN, BULL PLUG BLANK); DISCUSS OPTIONS; SCHEDULED FISHING TOOLS FOR 12/21/2012; PICK UP 2 7/8" TBG AND PREPARE TO RUN IN HOLE W/ OVERSHOT; SECURE WELL & SHUT DOWN OVER NIGHT.

12/21/2012

- CREW TO LOCATION; RUN IN HOLE W/ 4 9/16 OS W/ 3 21/32 GRAPPLE, 250-2 7/8 JOINTS, SET DOWN ON FISH, PULL OUT OF HOLE W/ FISH STRING W/ NO FISH; MADE A SECOND RUN & RETRIEVED FISH; SECURE WELL & SHUT DOWN OVER NIGHT.

12/22/2012

- ATTEMPTED TO SCHEDULE SCHLUMBERGER LOG W/ NO SUCCESS; RUN IN HOLE W/ BIT & SCRAPER & PULL OUT OF HOLE LAY DOWN TBG; WILL SCHEDULE REMAINING TASK AFTER HOLIDAYS

1/14/2013

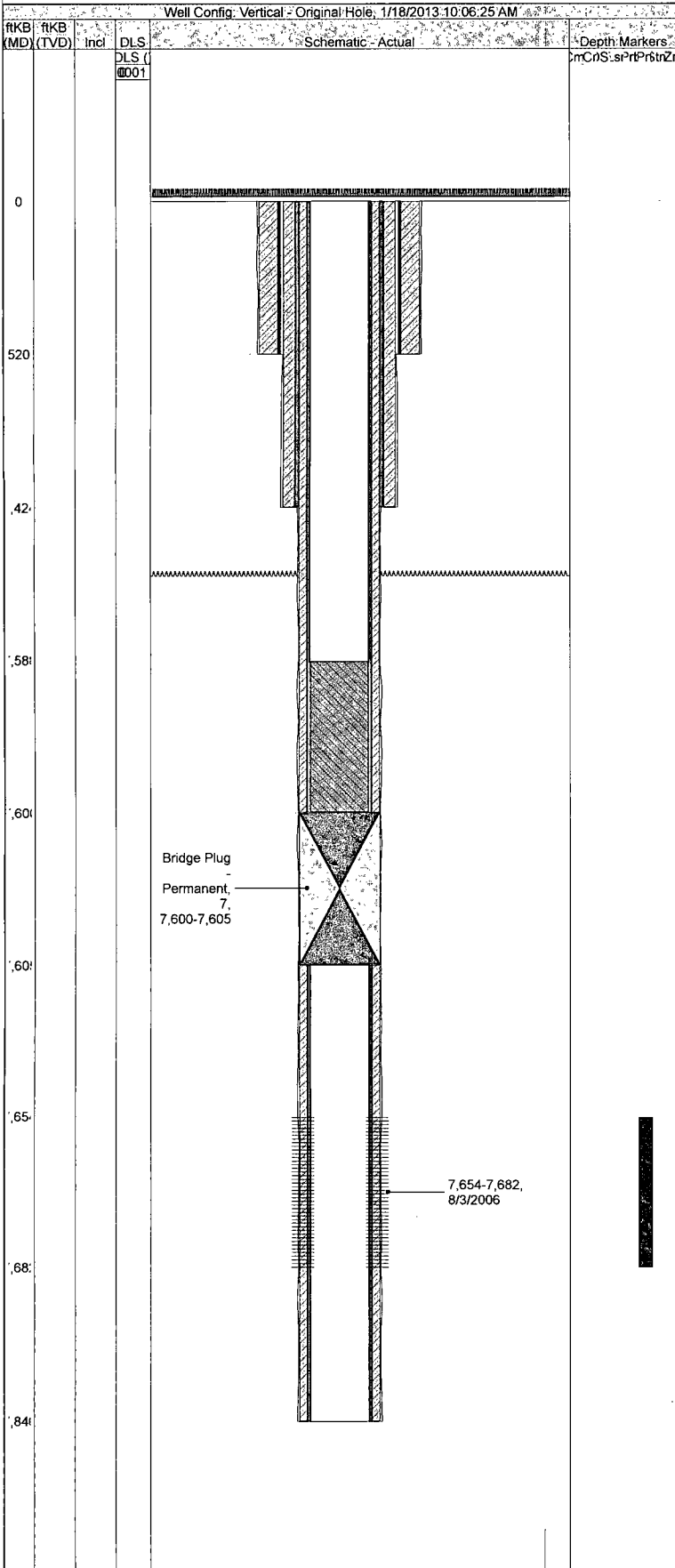
- MOVE IN RIG UP SHLUMBERGER WIRE LINE; SHUT IN CASING PRESSURE=80#, FLOW WELL DOWN TO WATER TANK; NIPPLE DOWN WELLHEAD, NIPPLE UP BOP; RUN IN HOLE W/ LOG, TAG FLUID @ 6630', TAG BTM @ 7802 (PBSD); RUN SONIC SCANNER/GR/CCL (PNS&CBL) F/ 7802 TO 7000', REPEAT 7802 TO 7000';
- RUN IN HOLE W/ 7" CAST IRON BRIDGE PLUG(CIBP) ON WIRELINE, CORRELATE TO SONIC SCANNER LOG; SET CIBP @ 7600'; RIH W/ 2 RUNS (20') CMT W/ DUMP BAILER; LOAD CASING F/ ~6630 TO ~1000' W/ 215 BBL 2% KCL; SECURE WELL & SHUT DOWN OVER NIGHT.

1/15/2013

- MOVE IN RIG UP SCHLUMBERGER WIRELINE; MOVE IN RIG UP BASIC ENERGY SERVICES PUMP TRUCK; LOAD CASING F/ 1000' TO SURFACE; RUN IN HOLE W/ LOG TOOLS, TAG CMT @ 7588; PSI CSG TO 1000#; RUN SONIC SCANNER F/ 7588 TO 1400, REPEAT 7588 TO 7350; RELEASE PSI, RIG DOWN WIRELINE & PUMP TRUCK; SECURE WELL & SHUT DOWN OVER NIGHT; EVALUATING LOG DATA.

Complete Well Summary

JACK IN THE BOX



API/UWI 30-015-34652		Operator Parallel Petroleum	
Original KB Elevation (ft) 4,200.00	KB-Ground Distance (ft) -12.00	Spud Date 5/4/2006	Rig Release Date 6/16/2006
Surface Legal Location Sec. 14, T19S, R21E		Latitude (DMS)	Longitude (DMS)

Original Hole				
Wellbore API/UWI	Btm. Loc.	Profile Type	KO MD (ftKB)	VS Dir (*)
Proposed Deviation Survey		Deviation Survey		
Size (in)	Act Top (ftKB)	Act Btm (ftKB)		
17 1/2	0.0	520.0		
12 1/4	520.0	1,424.0		
8 3/4	1,424.0	7,846.0		

PBTDs				
Date	Depth (ftKB)	Method	Comment	

Formations					
Formation Name	Geologic Age	Element Type	H2S (%)	Final Top MD (ftKB)	Final Top TVD (ftKB)

Deviation Surveys				
Date	Description	Prop?	Definitive?	
		No	No	

Reservoirs				
Reservoir Name	Depth Top (ftKB)	Depth Btm (ftKB)	Depth Res Datum (ft (SS))	

Surface, 520.0ftKB							
Run Date	Centralizers	Scratchers			Drift M...		
OD (in)	Item Description	Btm (ftKB)	Jts	ID (in)	Wt (kips)	Grade	Top Thread
13 3/8	Casing Joints	520.0		12.715	25.0	H-40	

Intermediate, 1,424.0ftKB							
Run Date	Centralizers	Scratchers			Drift M...		
OD (in)	Item Description	Btm (ftKB)	Jts	ID (in)	Wt (kips)	Grade	Top Thread
9 5/8	Casing Joints	1,424.0		8.921	51.3	J-55	

Production, 7,846.0ftKB							
Run Date	Centralizers	Scratchers			Drift M...		
OD (in)	Item Description	Btm (ftKB)	Jts	ID (in)	Wt (kips)	Grade	Top Thread
7	Casing Joints	7,846.0		6.276	204.0	J-55	

Production Casing Cement, casing, <Start Date?>							
Cementing Company	Evaluation Method	Cement Evaluation Results					
Stg No.	Description	Top (ftKB)			Btm (ftKB)	Full Return?	
1	Production Casing Cement	0.0			7,846.0	No	
Fluid	Class	Amount (sacks)	Yield (ft³/sack)	Mix H2O Ratio (gal/sack)	V (bbl)	Fluid Des	

Intermediate Casing Cement, casing, <Start Date?>							
Cementing Company	Evaluation Method	Cement Evaluation Results					
Stg No.	Description	Top (ftKB)			Btm (ftKB)	Full Return?	
1	Intermediate Casing Cement	0.0			1,424.0	No	
Fluid	Class	Amount (sacks)	Yield (ft³/sack)	Mix H2O Ratio (gal/sack)	V (bbl)	Fluid Des	

Surface Casing Cement, casing, <Start Date?>							
Cementing Company	Evaluation Method	Cement Evaluation Results					
Stg No.	Description	Top (ftKB)			Btm (ftKB)	Full Return?	
1	Surface Casing Cement	0.0			520.0	No	
Fluid	Class	Amount (sacks)	Yield (ft³/sack)	Mix H2O Ratio (gal/sack)	V (bbl)	Fluid Des	

Cement Plug, plug, 1/14/2013 21:00							
Cementing Company	Evaluation Method	Cement Evaluation Results					
Stg No.	Description	Top (ftKB)			Btm (ftKB)	Full Return?	
	Cement Plug	7,588.0			7,600.0	No	
Fluid	Class	Amount (sacks)	Yield (ft³/sack)	Mix H2O Ratio (gal/sack)	V (bbl)	Fluid Des	

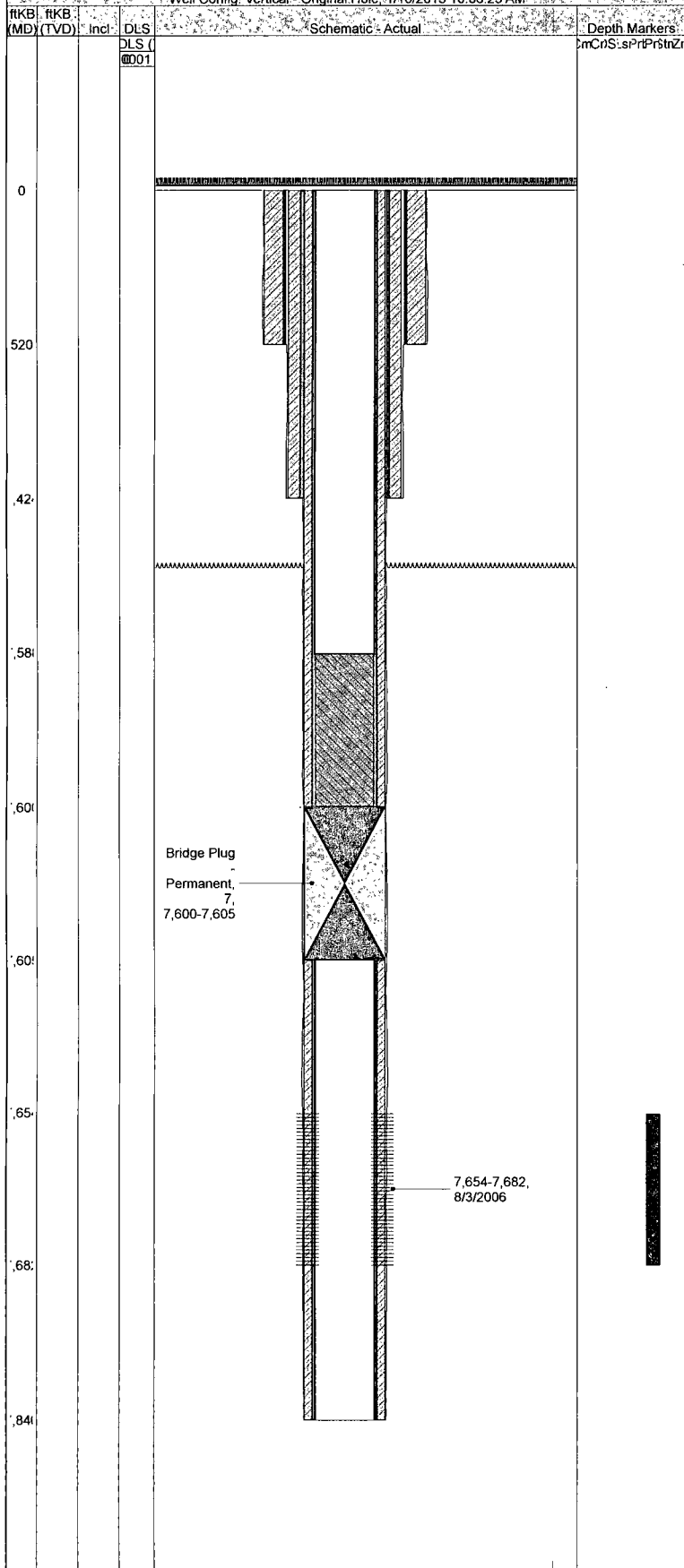
Other In Hole							
OD (in)	Description	Top (ftKB)	Btm (ftKB)	ID (in)	Make	Model	
7	Bridge Plug - Permanent	7,600.0	7,605.0				
Install Date	Type	Make	WP (psi)	Size (in)	Last Overhau...		

Wellhead Components							
Make	Model	S...	Top Conn	Top Sz (in)	Btm Conn	Btm Sz (in)	Description

Complete Well Summary

JACK IN THE BOX

Well Config: Vertical - Original Hole - 1/18/2013 10:06:25 AM



General Notes

Date	Comment
------	---------

Logging, 12/14/2012 12:00

Job Category	Primary Job Type	Start Date	End Date
Testing	Logging	12/14/2012	

Logging, 12/14/2012 12:00

AFE Number	Total AFE + Sup Amount	Total Fld Cost	Total Final Invoice Cost
		103,050.00	

Summary

Possible Cost Savings	Poss Time Save (hrs)	Estimated Problem Cost	Est Lost Time (hrs)
-----------------------	----------------------	------------------------	---------------------

Phases

Section	Planned Likely Phase Cost	Pl Cum Days ML (days)	Planned End Depth (ftKB)
---------	---------------------------	-----------------------	--------------------------

AFE Cost Breakdown

Code 1	Code 2	Code 3	Cost Description	Amount
--------	--------	--------	------------------	--------

Job Contacts

Contact Name	Company	Title	Office	Mobile
Kenneth Jackson	Parallel Petroleum LLC	Production Superinte	432-688-3602	432-664-1330
Rick Petersen	Parallel Petroleum LLC	Jr. Operations Eng	432-688-3676	7139271377

BHA No.	Size (in)	Model	IADC Codes	IADC Bit Dull
---------	-----------	-------	------------	---------------

Depth In (ftKB)	Depth Out (ftKB)	Drilled (ft)	Drill Time (...)	Bit Hrs Out...	IADC Bit Dull
-----------------	------------------	--------------	------------------	----------------	---------------

String Components

Deviation Surveys

Date	Description
------	-------------

Logs

Date	Type	Top (ftKB)	Btm (ftKB)	Logging Company
1/14/2013	Cement Bond	7,000.0	7,802.0	Schlumberger Wireline & Te...
1/14/2013	Collar Locator	7,000.0	7,802.0	Schlumberger Wireline & Te...
1/14/2013	Gamma Ray	7,000.0	7,802.0	Schlumberger Wireline & Te...
1/14/2013	Sonic	7,000.0	7,802.0	Schlumberger Wireline & Te...
1/15/2013	Cement Bond	1,400.0	7,588.0	Schlumberger Wireline & Te...
1/15/2013	Collar Locator	1,400.0	7,588.0	Schlumberger Wireline & Te...
1/15/2013	Gamma Ray	1,400.0	7,588.0	Schlumberger Wireline & Te...
1/15/2013	Sonic	1,400.0	7,588.0	Schlumberger Wireline & Te...

Bottom Hole Cores

Core No.	Type	Top (ftKB)	Btm (ftKB)	Recov (ft)	Wellbore
----------	------	------------	------------	------------	----------

DST Data

Date	Type	Zone	Depth Top (ftKB)	Depth Btm (ftKB)
------	------	------	------------------	------------------

Leak Off and Formation Integrity Tests

Test Date	Last Casing String Run	P (Surf) (psi)	Depth (ftKB)	Dens Fluid (lb/gal)	Leak off?
					No

Schematic Annotations

Depth (ftKB)	Annotation
--------------	------------

Production Failures

Failure Date	Failure Description	Type	Cause	Failed Item	Resolved Date	Est Fail Cost
--------------	---------------------	------	-------	-------------	---------------	---------------

data last updated on 1/16/2013 7:54 PM gmt

printed on Friday, January 18, 2013

page 2/2