

RECEIVED
FEB 12 2013
NMOCD ARTESIA

District I
 1625 N. French Dr., Hobbs, NM 88240
 District II
 1301 W. Grand Avenue, Artesia, NM 88210
 District III
 1000 Rio Brazos Rd., Aztec, NM 87410
 District IV
 1220 S. St. Francis Dr., Santa Fe, NM 87505

State of New Mexico
 Energy, Minerals & Natural Resources Department
OIL CONSERVATION DIVISION
 1220 South St. Francis Dr.
 Santa Fe, NM 87505

Form C-102
 Revised October 15, 2009
 Submit one copy to appropriate
 District Office
 AMENDED REPORT

WELL LOCATION AND ACREAGE DEDICATION PLAT

¹ API Number 30-015-40105		² Pool Code 97650		³ Pool Name LUSK; BONE SPRING WEST	
⁴ Property Code 39137		⁵ Property Name SPICA "25" FEDERAL			⁶ Well Number 4H
⁷ OGRID No. 6137		⁸ Operator Name DEVON ENERGY PRODUCTION COMPANY, L.P.			⁹ Elevation 3497.4

¹⁰ Surface Location

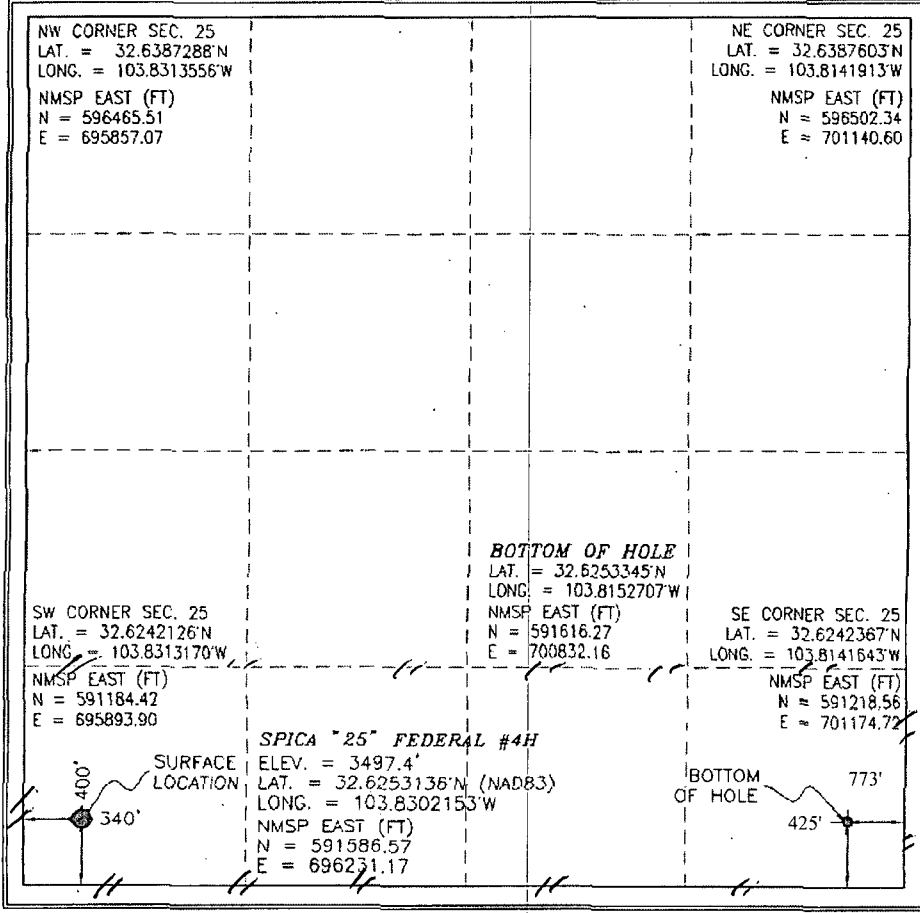
UL or lot no.	Section	Township	Range	Lot Idn	Feet from the	North/South line	Feet from the	East/West line	County
M	25	19 S	31 E		400	SOUTH	340	WEST	EDDY

¹¹ Bottom Hole Location If Different From Surface

UL or lot no.	Section	Township	Range	Lot Idn	Feet from the	North/South line	Feet from the	East/West line	County
P	25	19 S	31 E		425	SOUTH	773	EAST	EDDY

¹² Dedicated Acres 160	¹³ Joint or Infill	¹⁴ Consolidation Code	¹⁵ Order No.
--------------------------------------	-------------------------------	----------------------------------	-------------------------

No allowable will be assigned to this completion until all interests have been consolidated or a non-standard unit has been approved by the division.



¹⁷ OPERATOR CERTIFICATION
 I hereby certify that the information contained herein is true and complete to the best of my knowledge and belief, and that this organization either owns a working interest or undivided mineral interest in the land including the proposed bottom hole location or has a right to drill this well at this location pursuant to a contract with an owner of such a mineral or working interest, or to a voluntary pooling agreement or a compulsory pooling order heretofore entered by the division.

Signature: *Judith Barnett* Date: 2-8-13
 Printed Name: Judith Barnett, Regulatory Specialist

¹⁸ SURVEYOR CERTIFICATION
 I hereby certify that the well location shown on this plat was plotted from field notes of actual surveys made by me or under my supervision, and that the same is true and correct to the best of my belief.

Signature and Seal of Professional Surveyor: *[Seal]*
 Certificate Number: 11111 JARAMELLO, PLS 12797
 SURVEY NO. 604

PROJECT AREA
 PRODUCING
 PP: 418' FNL & 569' FWL Sec 26 T19S R31E