

UNITED STATES
DEPARTMENT OF THE INTERIOR
BUREAU OF LAND MANAGEMENT

RECEIVED

FEB 27 2013

NMOCD ARTESIA

FORM APPROVED
OMB NO. 1004-0137
Expires: July 31, 2010

WELL COMPLETION OR RECOMPLETION REPORT AND LOG

1a. Type of Well ☒ Oil Well ☐ Gas Well ☐ Dry ☐ Other
b. Type of Completion: ☐ New Well ☒ Work Over ☐ Deepen ☐ Plug Back ☐ Diff. Resvr.,
Other:

2. Name of Operator
Capstone Natural Resources, LLC

3. Address 2250 E. 73rd St., Suite 500, Tulsa OK 74136

3a. Phone No. (include area code)
918-236-3800

4. Location of Well (Report location clearly and in accordance with Federal requirements)*

At surface SE SW, 660' FSL & 1980' FWL Sec. 11, Township 17S, Range 31E

At top prod. interval reported below SE NW, 1980' FNL & 1980' FWL Sec. 11, Township 17S, Range 31E

At total depth 3970' SE NW, 1980' FNL & 1980' FWL Sec. 11, Township 17S, Range 31E

14. Date Spudded
05/12/1972

15. Date T.D. Reached
05/20/1972

16. Date Completed 05/28/1972
☐ D & A ☒ Ready to Prod.

5. Lease Serial No.

LC-029418-B

6. If Indian, Allottee or Tribe Name

7. Unit or CA Agreement Name and No.

8. Lease Name and Well No.
Lea C #9

9. AFI Well No.
3001520648

10. Field and Pool or Exploratory
Grayburg Jackson, 7 Rivers-QN-GB-SA

11. Sec., T., R., M., on Block and
Survey or Area 660' FSL & 1980' FWL, Sec 11,T
17S, R31E

12. County or Parish

EDDY

13. State

TX

17. Elevations (DF, RKB, RT, GL)*
3942 DF

18. Total Depth: MD 3950'
TVD 3950

19. Plug Back T.D.: MD 3920'
TVD 3920'

20. Depth Bridge Plug Set: MD none
TVD

21. Type Electric & Other Mechanical Logs Run (Submit copy of each)

Capstone did not receive any logs from previous operator. Strip log attached.

22. Was well cored? ☒ No ☐ Yes (Submit analysis)
Was DST run? ☒ No ☐ Yes (Submit report)
Directional Survey? ☒ No ☐ Yes (Submit copy)

23. Casing and Liner Record (Report all strings set in well)

Hole Size	Size/Grade	Wt. (#/ft.)	Top (MD)	Bottom (MD)	Stage Cementer Depth	No. of Sks. & Type of Cement	Slurry Vol. (BBL)	Cement Top*	Amount Pulled
11"	8 5/8	24#	surface	621'	621'	350 sx Class C	n/a	Surface	none
7 7/8"	5 1/2	15.5#	surface	3950'	3950'	1300 sx class C	n/a	Surface	none

24. Tubing Record

Size	Depth Set (MD)	Packer Depth (MD)	Size	Depth Set (MD)	Packer Depth (MD)	Size	Depth Set (MD)	Packer Depth (MD)
2 3/8	3872'	none						

25. Producing Intervals

Formation	Top	Bottom	Perforated Interval	Size	No. Holes	Perf. Status
A) Grayburg-San Andres	3369'	4500'	3369'-3878'	.375	18	Producing
B) Grayburg-San Andres	3369'	4500'	3456'-3866'	.36	7	Producing (new on this WO)
C)						
D)						

27. Acid, Fracture, Treatment, Cement Squeeze, etc.

Depth Interval	Amount and Type of Material
3369'-3878'	3000 gals 15% HCL Acid

28. Production - Interval A

Date First Produced	Test Date	Hours Tested	Test Production	Oil BBL	Gas MCF	Water BBL	Oil Gravity Corr. API	Gas Gravity	Production Method
05/28/72	11/19/12	24	→	1.5	0	16	33.6		Rod pump
Choke Size	Tbg. Press. Flwg. SI	Csg. Press.	24 Hr. Rate	Oil BBL	Gas MCF	Water BBL	Gas/Oil Ratio	Well Status	
1"	0	30	→	1.5	0	16	n/a	producing	

28a. Production - Interval B

Date First Produced	Test Date	Hours Tested	Test Production	Oil BBL	Gas MCF	Water BBL	Oil Gravity Corr. API	Gas Gravity	Production Method
			→						
Choke Size	Tbg. Press. Flwg. SI	Csg. Press.	24 Hr. Rate	Oil BBL	Gas MCF	Water BBL	Gas/Oil Ratio	Well Status	
			→						

ACCEPTED FOR RECORD
FEB 25 2013
BUREAU OF LAND MANAGEMENT
CARLSBAD FIELD OFFICE

*(See instructions and spaces for additional data on page 2)

AW

28b. Production - Interval C

Date First Produced	Test Date	Hours Tested	Test Production	Oil BBL	Gas MCF	Water BBL	Oil Gravity Corr. API	Gas Gravity	Production Method
			→						
Choke Size	Tbg. Press. Flwg. SI	Csg. Press.	24 Hr. Rate	Oil BBL	Gas MCF	Water BBL	Gas/Oil Ratio	Well Status	
			→						

28c. Production - Interval D

Date First Produced	Test Date	Hours Tested	Test Production	Oil BBL	Gas MCF	Water BBL	Oil Gravity Corr. API	Gas Gravity	Production Method
			→						
Choke Size	Tbg. Press. Flwg. SI	Csg. Press.	24 Hr. Rate	Oil BBL	Gas MCF	Water BBL	Gas/Oil Ratio	Well Status	
			→						

29. Disposition of Gas (*Solid, used for fuel, vented, etc.*)
 vented

30. Summary of Porous Zones (Include Aquifers):

Show all important zones of porosity and contents thereof: Cored intervals and all drill-stem tests, including depth interval tested, cushion used, time tool open, flowing and shut-in pressures and recoveries.

31. Formation (Log) Markers

n/a

Formation	Top	Bottom	Descriptions, Contents, etc.	Name	Top
					Meas. Depth
Salado Salt	802'	1772'	salt		
Yates	1957'	2142'	sand, salt		
Seven Rivers	2292'	2534'	sand		
Queen	2912'	n/a	sand		
Grayburg	3369'	3612'	carbonate		
San Andres	3612'	4500'	Carbonate		

32. Additional remarks (include plugging procedure):

We are researching to find logs ran during original completion in 1972. Please find attached a strip log that is all we have available at present time. Previous operator had no logs when we acquired property.

33. Indicate which items have been attached by placing a check in the appropriate boxes:

- ☐ Electrical/Mechanical Logs (1 full set req'd.)
 ☐ Geologic Report
 ☐ DST Report
 ☐ Directional Survey
☐ Sundry Notice for plugging and cement verification
 ☐ Core Analysis
 ☐ Other: only log available is attached.

34. I hereby certify that the foregoing and attached information is complete and correct as determined from all available records (see attached instructions)*

Name (*please print*) Darren SeglemTitle Production ManagerSignature Date 12/13/2012

Title 18 U.S.C. Section 1001 and Title 43 U.S.C. Section 1212, make it a crime for any person knowingly and willfully to make to any department or agency of the United States any false, fictitious or fraudulent statements or representations as to any matter within its jurisdiction.

GRAYBURG JACKSON
WESTBROOK OIL CORPORATION
20648
LEA

ELEV_KB : 3,945 9C

Log
Depth(ft)
3325 -

Log
Depth(ft)
- 3325

3375 -

- 3375

3425 -

- 3425

3475 -

- 3475

3525 -

- 3525

3575 -

- 3575

3625 -

- 3625

3675 -

- 3675

3725 -

- 3725

3775 -

- 3775

3825 -

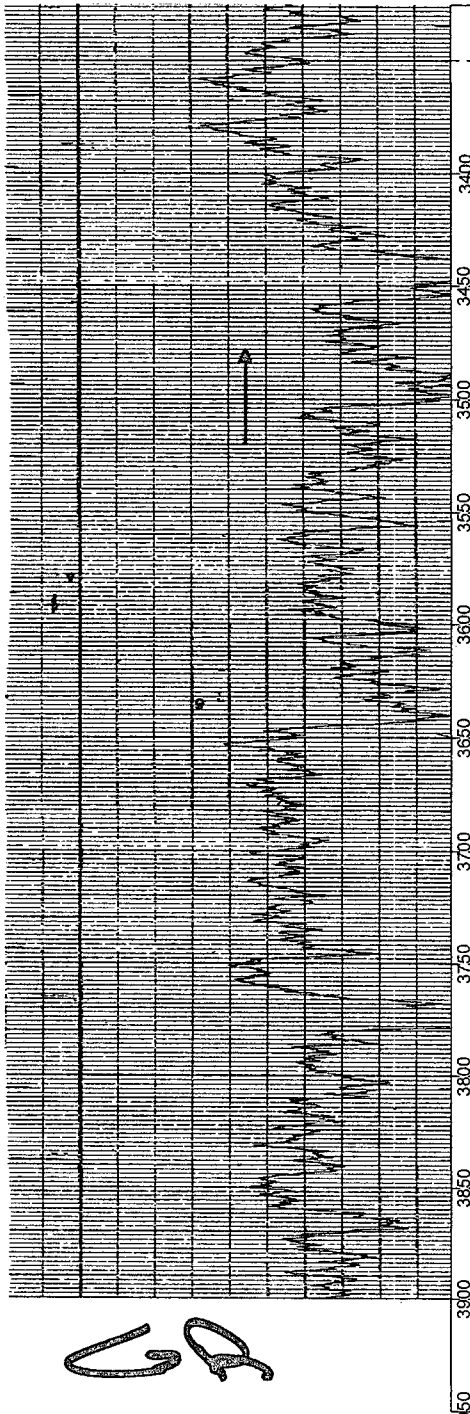
- 3825

3875 -

- 3875

3925 -

- 3925



WELL COMP_DATE : 5/72