

Submit 1 Copy To Appropriate District Office
District I - (575) 393-6161
1625 N. French Dr., Hobbs, NM 88240
District II - (575) 748-1283
811 S. First St., Artesia, NM 88210
District III - (505) 334-6178
1000 Rio Brazos Rd., Aztec, NM 87410
District IV - (505) 476-3460
1220 S. St. Francis Dr., Santa Fe, NM 87505

State of New Mexico
Energy, Minerals and Natural Resources

Form C-103
Revised August 1, 2011

OIL CONSERVATION DIVISION
1220 South St. Francis Dr.
Santa Fe, NM 87505

WELL API NO. 30-005-62663
5. Indicate Type of Lease STATE <input checked="" type="checkbox"/> FEE <input type="checkbox"/>
6. State Oil & Gas Lease No. LG-9154
7. Lease Name or Unit Agreement Name Energy AFY State
8. Well Number 1
9. OGRID Number 025575
10. Pool name or Wildcat Foor Ranch; Pre-Permian

SUNDRY NOTICES AND REPORTS ON WELLS (DO NOT USE THIS FORM FOR PROPOSALS TO DRILL OR TO DEEPEN OR PLUG BACK TO A DIFFERENT RESERVOIR. USE "APPLICATION FOR PERMIT" (FORM C-101) FOR SUCH PROPOSALS.)	
1. Type of Well: Oil Well <input type="checkbox"/> Gas Well <input checked="" type="checkbox"/> Other	
2. Name of Operator Yates Petroleum Corporation	
3. Address of Operator 105 South Fourth Street, Artesia, NM 88210	
4. Well Location Unit Letter <u>C</u> : <u>990</u> feet from the <u>North</u> line and <u>1980</u> feet from the <u>West</u> line Section <u>36</u> Township <u>9S</u> Range <u>26E</u> NMPM <u>Chaves</u> County	
11. Elevation (Show whether DR, RKB, RT, GR, etc.) 3840' GR	

12. Check Appropriate Box to Indicate Nature of Notice, Report or Other Data

NOTICE OF INTENTION TO:

PERFORM REMEDIAL WORK ☐ PLUG AND ABANDON ☒
TEMPORARILY ABANDON ☐ CHANGE PLANS ☐
PULL OR ALTER CASING ☐ MULTIPLE COMPL ☐
DOWNHOLE COMMINGLE ☐

SUBSEQUENT REPORT OF:

REMEDIAL WORK ☐ ALTERING CASING ☐
COMMENCE DRILLING OPNS. ☐ P AND A ☐
CASING/CEMENT JOB ☐

OTHER: ☐

OTHER: ☐

13. Describe proposed or completed operations. (Clearly state all pertinent details, and give pertinent dates, including estimated date of starting any proposed work). SEE RULE 19.15.7.14 NMAC. For Multiple Completions: Attach wellbore diagram of proposed completion or recompletion.

Yates Petroleum Corporation plans to plug and abandon this well as follows:

1. MIRU WSU, NU BOP. Rig up any safety equipment as needed. No casing recovery will be attempted.
2. Set a CIBP at 5997' with 35' cement on top. This puts a plug over Ordovician perforations.
3. Set a CIBP at 5218' with 35' cement on top. This puts a plug over non producing and squeezed Wolfcamp perforations.
4. Spot a 25 sx Class "C" cement plug from 4544'-4644'. This puts a 100' plug across top of the Abo.
5. Spot a 25 sx Class "C" cement plug from 2297'-2447'. This puts a 150' plug across top of the Glorieta and DV tool.
6. Spot a 25 sx Class "C" cement plug from 1143'-1243'. This puts a 100' plug across surface casing shoe. WOC and tag plug.
7. Spot a 15 sx Class "C" cement plug from 60' up to surface.
8. Remove all surface equipment, weld dry hole marker and clean location as per regulation.

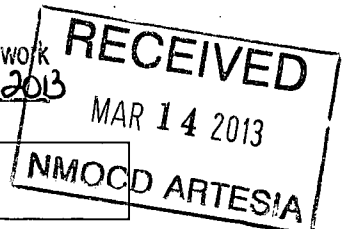
Wellbore schematics attached

NOTE: Yates Petroleum Corporation will use steel pits and no earth pits is complete by June 18, 2013

Spud Date:

Rig Release Date:

Approval Granted providing work



I hereby certify that the information above is true and complete to the best of my knowledge and belief.

SIGNATURE

Tina Huerta

TITLE

Regulatory Reporting Supervisor

DATE

March 13, 2013

Type or print name

Tina Huerta

E-mail address:

tinah@yatespetroleum.com

PHONE:

575-748-4168

For State Use Only

APPROVED BY:

R. Dade

TITLE

Dist. II Supervisor

DATE

3/18/2013

Conditions of Approval (if any):

See COA's Attached

WELL NAME: Energy AFY St 31 FIELD: Foor Ranch Pre-Perm

LOCATION: 990' FNL & 1980' FWL of Section 36-9S-26E Chaves Co., NM

GL: 3840.2' GR ZERO: KB: 3852.2' CASING PROGRAM

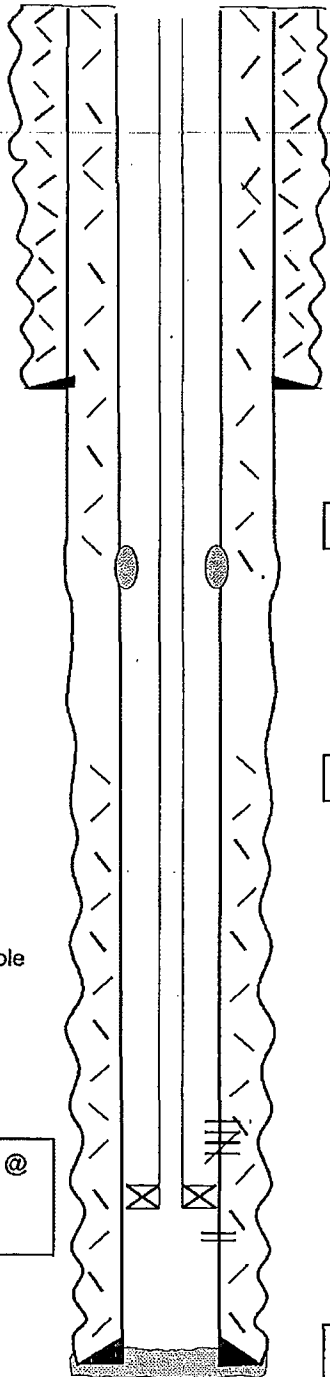
SPUD DATE: 1/6/89 COMPLETION DATE: 2/8/89

COMMENTS: API: 30-005-62663

8-5/8" 24# J-55	1,193'
5-1/2" 15.5# J-55	6,086'

CURRENT

12 1/4"



8 5/8" @ 1193'
600 sx (circ)

DV tool @ 2,397'

TOC @ 4,110' (Stage 1)

WC perf: 5,268'-82',
WC perf: 5,358'-72', 78'-88' (squeezed)

Ordo perfs: 6047'-60'

5-1/2" @ 6,086'
Stage 1: 500 sxs
Stage 2: 450 sxs (Circ)

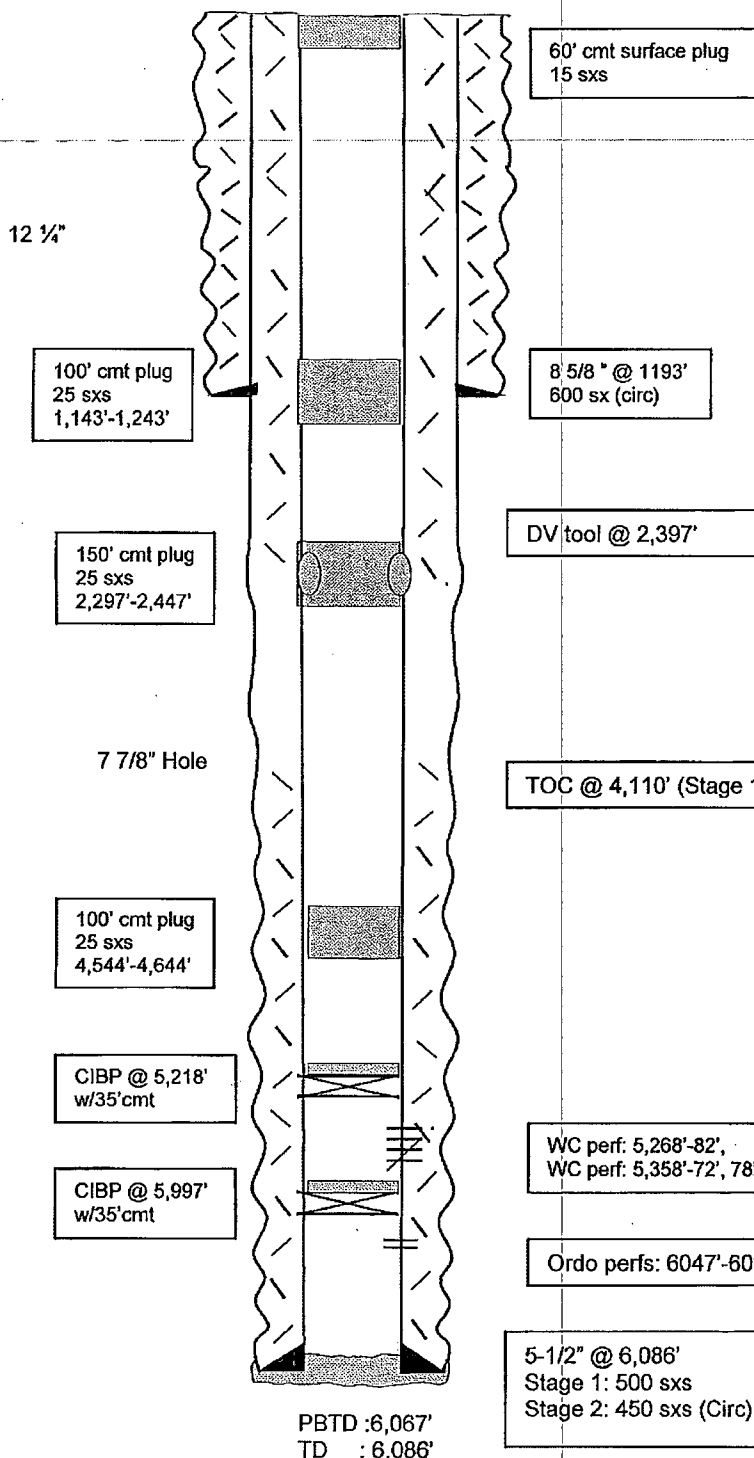
Formation tops:

San Andres : 1,200'
Glorieta : 2,347'
Yeso : 2,412'
Abo : 4,594'
WC : 5,266'
Penn Clastics : 5,920'
Cisco : 5,780'
Miss : 5,995'
Ordovician : 6,040'

Not to Scale
5/23/11
MMFH

WELL NAME: Energy AFY St-41 FIELD: Foor Ranch Pre-Perm
 LOCATION: 990' FNL & 1980' FWL of Section 36-9S-26E Chaves Co., NM
 GL: 3840.2' GR ZERO: KB: 3852.2'
 SPUD DATE: 1/6/89 COMPLETION DATE: 2/8/89 CASING PROGRAM
 COMMENTS: API: 30-005-62663

8-5/8" 24# J-55	1,193'
5-1/2" 15.5# J-55	6,086'



AFTER

Formation tops:

San Andres	: 1,200'
Glorieta	: 2,347'
Yeso	: 2,412'
Abo	: 4,594'
WC	: 5,266'
Penn Clastics	: 5,920'
Cisco	: 5,780'
Miss	: 5,995'
Ordovician	: 6,040'

Not to Scale
 5/23/11
 MMFH

NEW MEXICO OIL CONSERVATION DIVISION
DISTRICT 2 OFFICE
811 S. FIRST STREET
ARTESIA, NM 88210
(575)748-1283

CONDITIONS OF APPROVAL FOR PLUGGING & ABANDONMENT

Operator: Yates Pet. Corp

Well Name & Number: Energy AFY State #1

API #: 30-005-62663

1. Produced water **will not** be used during any part of the plugging & abandonment operation.
2. Notify NMOCD Dist. 2 office at least 24 hrs before beginning work.
3. Closed Loop System is to be used for entire plugging operation. Upon completion, contents of steel pit are to be hauled to a permitted disposal location.
4. Trucking companies being used to haul oilfield waste fluids to a disposal – commercial or private – shall have an approved NMOCD C-133 permit. A copy of this permit shall be available in each truck used to haul waste products. It is the responsibility of the operator, as well as the contractor, to verify that this permit is in place prior to performing work. Drivers shall produce a copy upon request of NMOCD Field Inspectors.
5. A subsequent C-103 will serve as notification that the well bore has been plugged ONLY. A C-103 FINAL shall be filed before any bonding can be released on the well. Upon receipt of the Final, an inspection will be performed to verify that the location has been satisfactorily cleaned to NMOCD standards.
6. If work has not begun within 90 days of the approval of this procedure, an extension request must be filed, stating reason that well has not been plugged.
7. Every attempt must be made to clean the well bore out to below the perfs, before any plugs can be set, by whatever means possible.
8. Cement Retainers may not be used.

9. Squeeze pressures are not to exceed 500 PSI, unless approval is given by NMOCD.
10. Plugs may be combined after consulting with and getting approval from NMOCD.
11. Minimum WOC time for tag plugs will be 4 Hrs.

DATE: March 18-2013

APPROVED BY: 

GUIDELINES FOR PLUGGING AND ABANDONMENT

DISTRICT II / ARTESIA

- All cement plugs will be a minimum of 100' in length or a minimum of 25 sacks of cement, whichever is greater.
- Mud laden fluids must be placed between all cement plugs.
- Mud laden fluids must be mixed at 25 sacks of gel per 100 bbls of water.
- A cement plug is required to be set 50' below and 50' above all casing shoes and casing stub plugs. These plugs must be tagged.
- A CIBP with 35' of cement on top may be set in lieu of 100' cement plug.
- A plug as indicated above must be placed within 100' of top perforation. This plug must be tagged.
- Plugs set below and above salt zones must be tagged.
- No more than 2000' is to be allowed between cement plugs in open hole and no more than 3000' in cased hole.
- DV tools are required to have a 100' cement plug set 50' above and below the tool and must be tagged.
- Formations to be isolated with plugs placed at the top of each formation are:
 - Fusselman
 - Devonian
 - Morrow
 - Wolfcamp
 - Bone Spring
 - Delaware
 - Any Salt Section (Plug at top and bottom)
 - Abo
 - Glorieta
 - Yates (this plug is usually at base of salt section)
- If cement does not exist behind casing strings at recommended formation depths, the casing must be cut and pulled with plugs set at these depths or casing must be perforated and cement squeezed behind casing at the formation depths.
- In the R-111-P area (Potash Mine area) a solid cement plug must be set across the salt section. Fluid used to mix the cement shall be saturated with the salts common to the section penetrated and in suitable proportions, but not more than a 3% calcium chloride by weight of cement will be considered the desired mixture whenever possible (50' below and 50' above).