

District I
1625 N. French Dr., Hobbs, NM 88240
Phone: (575) 393-6161 Fax: (575) 393-0720
District II
311 S. First St., Artesia, NM 88210
Phone: (575) 748-1283 Fax: (575) 748-9720
District III
1000 Rio Brazos Road, Aztec, NM 87410
Phone: (505) 334-6175 Fax: (505) 334-6170
District IV
1220 S. St. Francis Dr., Santa Fe, NM 87505
Phone: (505) 476-2460 Fax: (505) 476-3462

State of New Mexico
Energy, Minerals & Natural Resources Department
OIL CONSERVATION DIVISION
1220 South St. Francis Dr.
Santa Fe, NM 87505
RECEIVED
MAR 21 2013
MOOD ARTESIA

Form C-102
Revised August 1, 2011
Submit one copy to appropriate
District Office
☐ AMENDED REPORT

WELL LOCATION AND ACREAGE DEDICATION PLAT

¹ API Number 30-015-41222	² Pool Code 24660	³ Pool Name Jorehand Ranch	⁴ Well Number 1H
⁵ Property Code 39776	⁶ Property Name LONE RANGER 33 STATE		⁷ Elevation 3108.1
⁸ OGRID No. 6137	⁹ Operator Name DEVON ENERGY PRODUCTION COMPANY, L.P.		

¹⁰ Surface Location									
UL or lot no.	Section	Township	Range	Lot Idn	Feet from the	North/South line	Feet from the	East/West line	County
P	33	23 S	27 E		315	SOUTH	50	EAST	EDDY

¹¹ Bottom Hole Location If Different From Surface									
UL or lot no.	Section	Township	Range	Lot Idn	Feet from the	North/South line	Feet from the	East/West line	County
M	33	23 S	27 E		660	SOUTH	330	WEST	EDDY

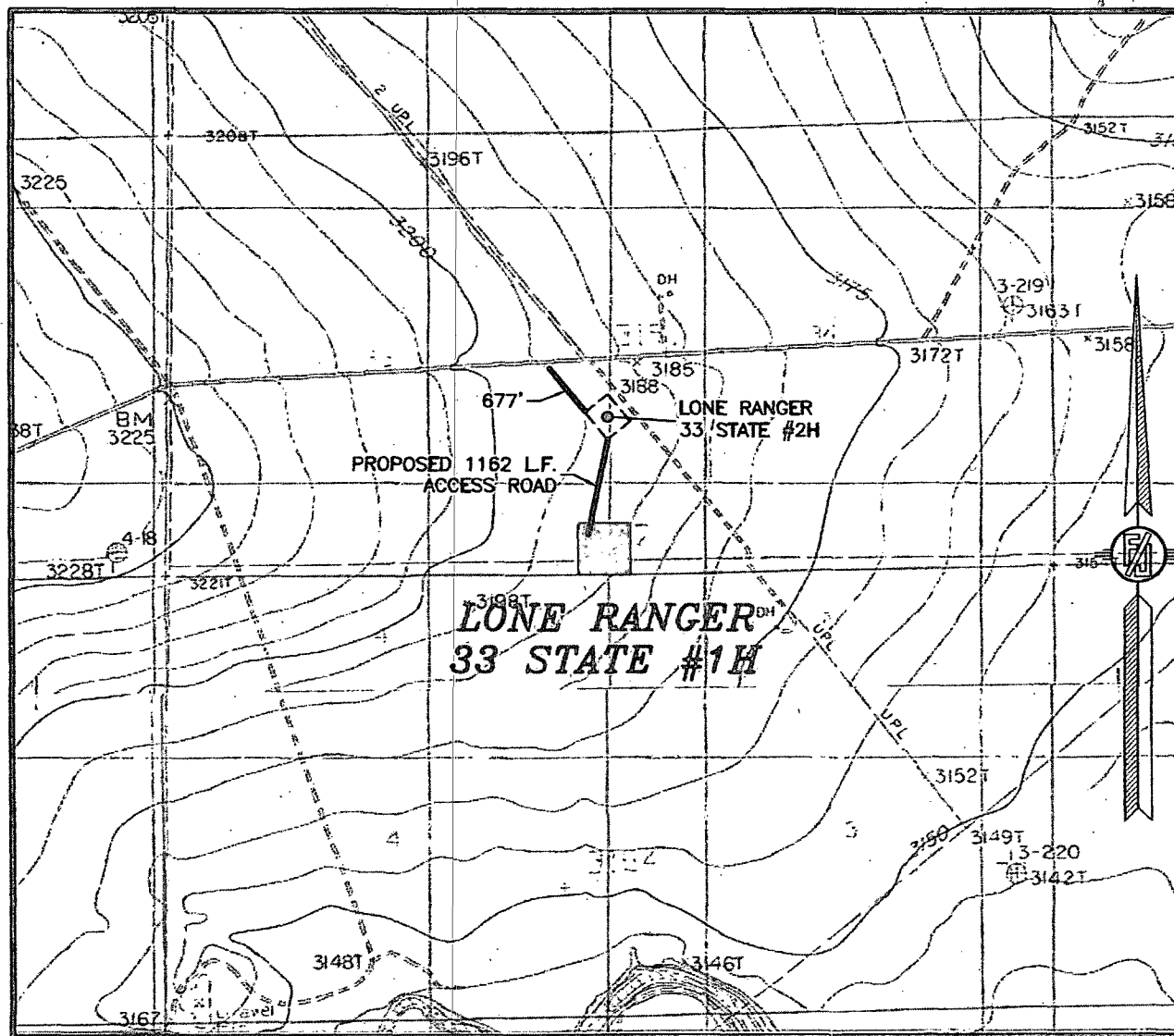
¹² Dedicated Acres 160 ac.	¹³ Joint or Infill	¹⁴ Consolidation Code	¹⁵ Order No.
-------------------------------------------------	-------------------------------	----------------------------------	-------------------------

No allowable will be assigned to this completion until all interests have been consolidated or a non-standard unit has been approved by the division.

<p>589°58'54"W 2642.57 FT</p> <p>NW CORNER SEC. 33 LAT. = 32.2683629°N LONG. = 104.2035059°W NMSP EAST (FT) N = 461387.72 E = 581464.80</p> <p>W/4 CORNER SEC. 33 LAT. = 32.2611274°N LONG. = 104.2036647°W NMSP EAST (FT) N = 458755.53 E = 581418.90</p> <p>SW CORNER SEC. 33 LAT. = 32.2539247°N LONG. = 104.2038467°W NMSP EAST (FT) N = 456135.23 E = 581365.81</p> <p>330' BOTTOM OF HOLE</p>		<p>589°58'54"W 2642.57 FT</p> <p>N/4 CORNER SEC. 33 COMPUTED</p> <p>LONE RANGER 33 STATE #1H ELEV. = 3108.1 LAT. = 32.2548261°N (NAD83) LONG. = 104.1869024°W NMSP EAST (FT) N = 456469.86 E = 586603.37</p> <p>S/4 CORNER SEC. 33 LAT. = 32.2539436°N LONG. = 104.1953040°W NMSP EAST (FT) N = 456145.40 E = 584006.60</p> <p>50' SURFACE LOCATION</p>		<p>589°58'54"W 2642.57 FT</p> <p>NE CORNER SEC. 33 LAT. = 32.2683488°N LONG. = 104.1864106°W NMSP EAST (FT) N = 461389.41 E = 586748.66</p> <p>E/4 CORNER SEC. 33 COMPUTED</p> <p>SE CORNER SEC. 33 LAT. = 32.2539607°N LONG. = 104.1867619°W NMSP EAST (FT) N = 456155.12 E = 586647.24</p>		<p>¹⁷ OPERATOR CERTIFICATION</p> <p>I hereby certify that the information contained herein is true and complete to the best of my knowledge and belief, and that this organization either owns a working interest or unleased mineral interest in the land including the proposed bottom hole location or has a right to drill this well at this location pursuant to a contract with an owner of such a mineral or working interest, or to a voluntary pooling agreement or a compulsory pooling order previously approved by the division.</p> <p><i>[Signature]</i> 3/18/13 Date</p> <p>Ryan DeLong Printed Name</p> <p>Ryan.DeLong@dvn.com E-mail Address</p> <p>¹⁸ SURVEYOR CERTIFICATION</p> <p>I hereby certify that the well location shown on this plat was plotted from field notes of actual surveys made by me or under my supervision, and that the same is true and correct to the best of my belief.</p> <p>MARCH 14, 2013 Date of Survey</p> <p><i>[Signature]</i> Signature and Seal of Professional Surveyor</p> <p>Certificate Number: FILANON E. JARAMILLO, PLS 12797 REGISTERED LAND SURVEYOR SURVEY NO. 1673</p>
-----------------------------------------------------------------------------------------------------------------------------------------------------------------------------------------------------------------------------------------------------------------------------------------------------------------------------------------------------------------------------------------------------------------------------------------------------------------	--	---------------------------------------------------------------------------------------------------------------------------------------------------------------------------------------------------------------------------------------------------------------------------------------------------------------------------------------------------------------------------------------------------------	--	------------------------------------------------------------------------------------------------------------------------------------------------------------------------------------------------------------------------------------------------------------------------------------------------------------------------------------------	--	------------------------------------------------------------------------------------------------------------------------------------------------------------------------------------------------------------------------------------------------------------------------------------------------------------------------------------------------------------------------------------------------------------------------------------------------------------------------------------------------------------------------------------------------------------------------------------------------------------------------------------------------------------------------------------------------------------------------------------------------------------------------------------------------------------------------------------------------------------------------------------------------------------------------------------------------------------------------------------------------------------------------------------------------------------------------------------------------------------------------------------------------------------------------------------------

MARCH 14, 2013

33, TOWNSHIP 23 SOUTH, RANGE 27 EAST, N.M.P.M.
EDDY COUNTY, STATE OF NEW MEXICO
LOCATION VERIFICATION MAP



USGS QUAD MAP:
OTIS

NOT TO SCALE

DEVON ENERGY PRODUCTION COMPANY, L.P.
LONE RANGER 33 STATE #1H

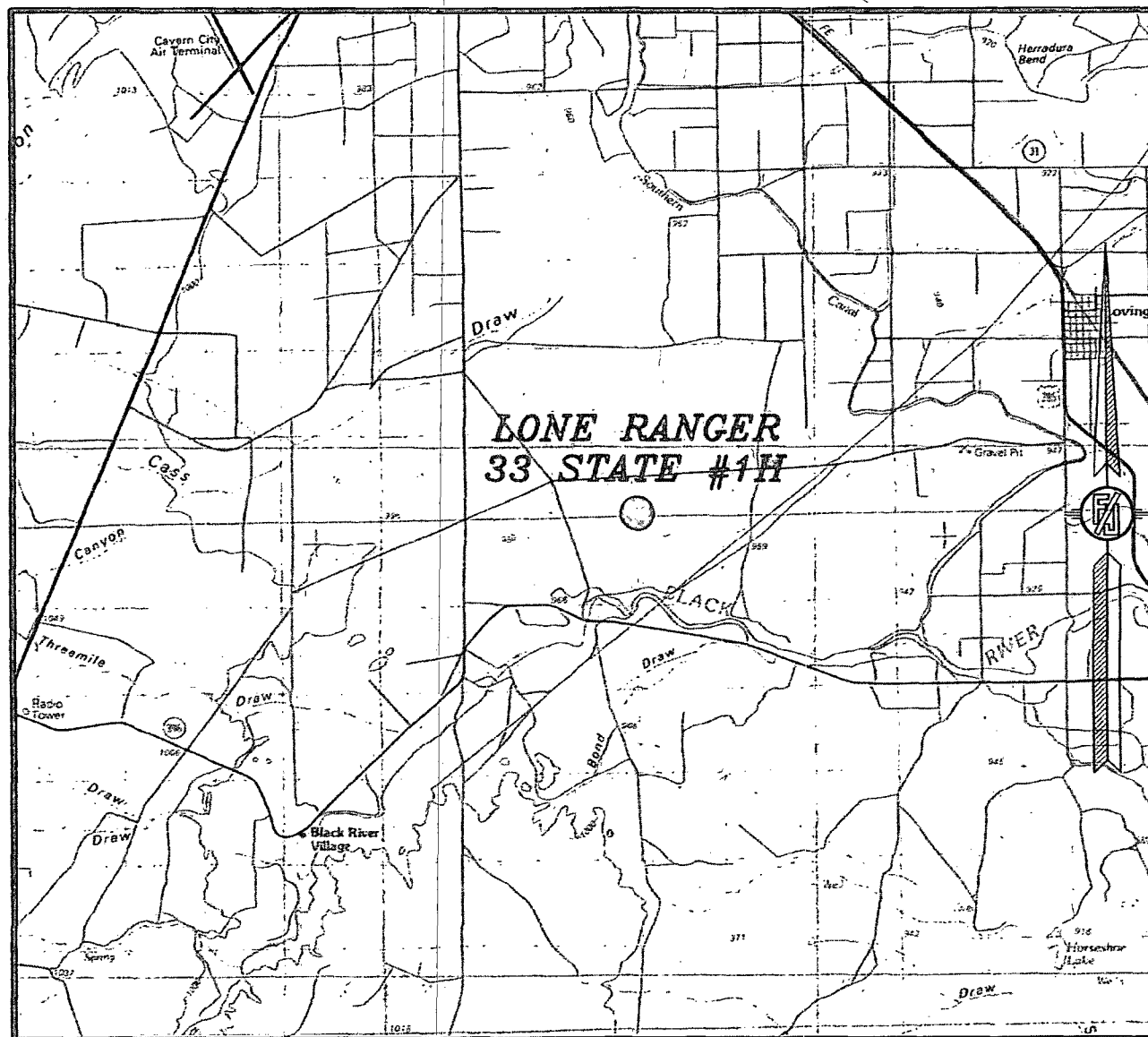
LOCATED 315 FT. FROM THE SOUTH LINE
AND 50 FT. FROM THE EAST LINE OF
SECTION 33, TOWNSHIP 23 SOUTH,
RANGE 27 EAST, N.M.P.M.
EDDY COUNTY, STATE OF NEW MEXICO

MARCH 14, 2013

MADRON SURVEYING, INC. 301 SOUTH CANAL CARLSBAD, NEW MEXICO
(575) 234-3341

SURVEY NO. 1673

SECTION 33, TOWNSHIP 23 SOUTH, RANGE 27 EAST, N.M.P.M.
EDDY COUNTY, STATE OF NEW MEXICO
VICINITY MAP



NOT TO SCALE

DEVON ENERGY PRODUCTION COMPANY, L.P.

LONE RANGER 33 STATE #1H

LOCATED 315 FT. FROM THE SOUTH LINE

AND 50 FT. FROM THE EAST LINE OF

SECTION 33, TOWNSHIP 23 SOUTH,

RANGE 27 EAST, N.M.P.M.

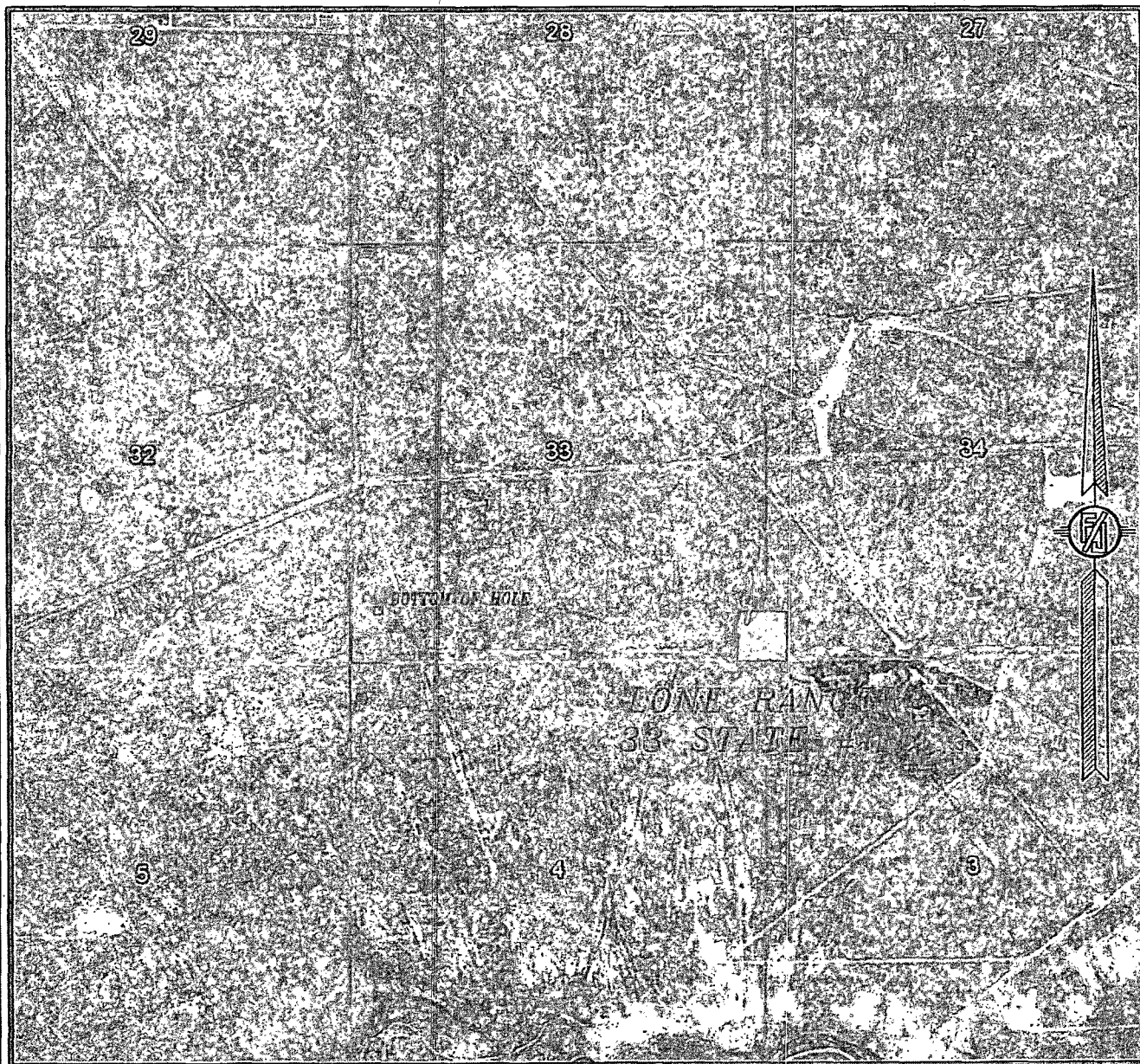
EDDY COUNTY, STATE OF NEW MEXICO

MARCH 14, 2013

SURVEY NO. 1673

MADRON SURVEYING, INC. 301 SOUTH CANAL CARLSBAD, NEW MEXICO
(575) 234-3341

SECTION 33, TOWNSHIP 23 SOUTH, RANGE 27 EAST, N.M.P.M.
EDDY COUNTY, STATE OF NEW MEXICO
AERIAL PHOTO



NOT TO SCALE
AERIAL PHOTO:
GOOGLE EARTH
JUNE 2011

DEVON ENERGY PRODUCTION COMPANY, L.P.
LONE RANGER 33 STATE #1H

LOCATED 315 FT. FROM THE SOUTH LINE
AND 50 FT. FROM THE EAST LINE OF
SECTION 33, TOWNSHIP 23 SOUTH,
RANGE 27 EAST, N.M.P.M.
EDDY COUNTY, STATE OF NEW MEXICO

MARCH 14, 2013

SURVEY NO. 1673

MADRON SURVEYING, INC. 301 SOUTH CANAL (575) 234-3341 CARLSBAD, NEW MEXICO