

DISTRICT I
1625 N. French Dr., Hobbs, NM 88240
Phone (575) 393-8161 Fax: (575) 393-0720

DISTRICT II
811 S. First St., Artesia, NM 88210
Phone: (575) 746-1283 Fax: (575) 746-9720

DISTRICT III
1000 Rio Brazos Rd., Aztec, NM 87410
Phone (505) 334-6178 Fax: (505) 334-8170

DISTRICT IV
1220 S. St. Francis Dr., Santa Fe, NM 87505
Phone (505) 476-3460 Fax: (505) 476-3462

State of New Mexico
Energy, Minerals and Natural Resources Department

RECEIVED

MAR 27 2013

Submit one copy to appropriate
District Office

Form C-102

Revised August 1, 2011

OIL CONSERVATION DIVISION ARTESIA
1220 South St. Francis Dr.
Santa Fe, New Mexico 87505

WELL LOCATION AND ACREAGE DEDICATION PLAT

☐ AMENDED REPORT

API Number 30-015-40909	Pool Code 97565	Pool Name North Seven Rivers; Gloria + Yeso
Property Code 39591	Property Name WYATT DRAW 24/25 IH Federal	Well Number IH
OGRID No. 14744	Operator Name MEWBOURNE OIL COMPANY	Elevation 3387

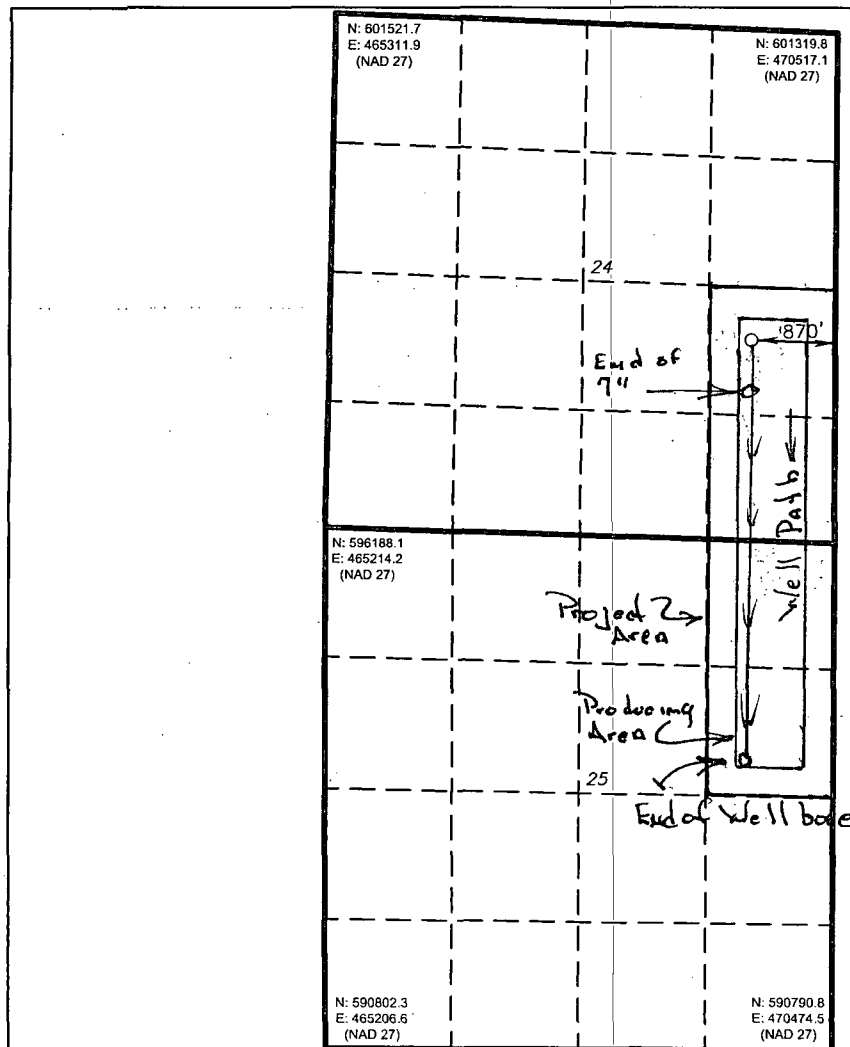
Surface Location

UL or lot No.	Section	Township	Range	Lot Idn	Feet from the	North/South line	Feet from the	East/West line	County
I	24	19 S	25 E		2100	SOUTH	870	EAST	EDDY

Bottom Hole Location If Different From Surface

UL or lot No.	Section	Township	Range	Lot Idn	Feet from the	North/South line	Feet from the	East/West line	County
H	25	19 S	25 E		2271	North	877	East	Eddy
Dedicated Acres 160	Joint or Infill	Consolidation Code	Order No.						

NO ALLOWABLE WILL BE ASSIGNED TO THIS COMPLETION UNTIL ALL INTERESTS HAVE BEEN CONSOLIDATED
OR A NON-STANDARD UNIT HAS BEEN APPROVED BY THE DIVISION



OPERATOR CERTIFICATION

I hereby certify that the information contained herein is true and complete to the best of my knowledge and belief, and that this organization either owns a working interest or unleased mineral interest in the land including the proposed bottom hole location or has a right to drill this well at this location pursuant to a contract with an owner of such a mineral or working interest, or to a voluntary pooling agreement or a compulsory pooling order heretofore entered by the division.

Signature: *N.M. Young* Date: 2/15/13

Printed Name

Email Address

SURVEYOR CERTIFICATION

I hereby certify that the well location shown on this plat was plotted from field notes of actual surveys made by me or under my supervision, and that the same is true and correct to the best of my belief.

NOVEMBER 1, 2012
Date Surveyed
Signature & Seal of Professional Surveyor
7977
Certificate No. Gary L. Jones 7977
BASIN SURVEYS 27622