

DISTRICT I
1825 N. French Dr., Hobbs, NM 88240

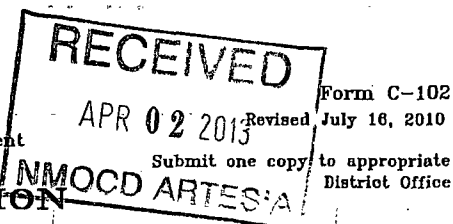
DISTRICT II
1301 W. Grand Avenue, Artesia, NM 88210

DISTRICT III
1000 Rio Brazos Rd., Aztec, NM 87410

DISTRICT IV
1220 S. St. Francis Dr., Santa Fe, NM 87505

State of New Mexico
Energy, Minerals and Natural Resources Department

OIL CONSERVATION DIVISION
1220 South St. Francis Dr.
Santa Fe, New Mexico 87505



WELL LOCATION AND ACREAGE DEDICATION PLAT

☒ AMENDED REPORT
As Drilled

API Number 30-015-39835	Pool Code 47545	Pool Name Nash Draw Delaware; BS (Avalon Sand)
Property Code 306402	Property Name POKER LAKE UNIT	Well Number 332H
OGRID No. 260737	Operator Name BOPCO, L.P.	Elevation 3427'

Surface Location

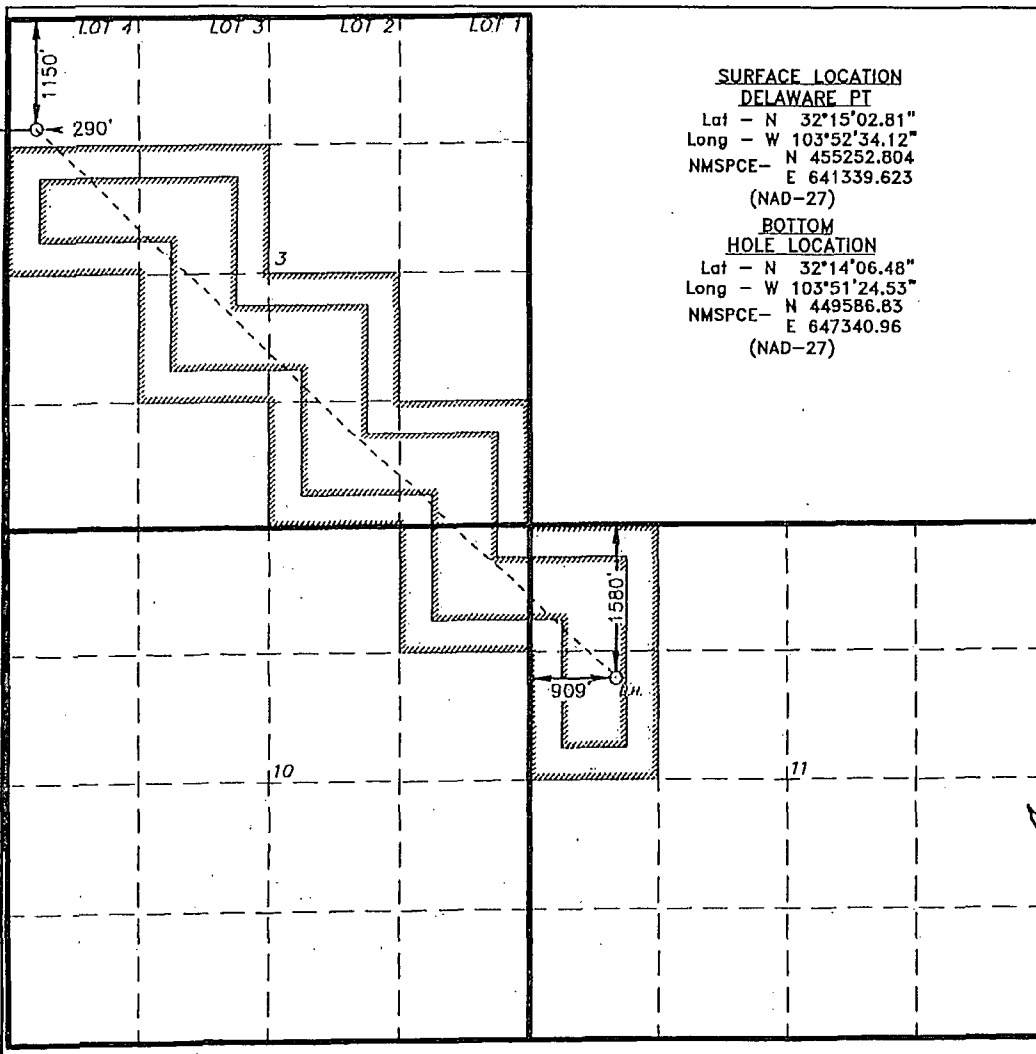
UL or lot No.	Section	Township	Range	Lot Idn	Feet from the	North/South line	Feet from the	East/West line	County
LOT 4	3	24 S	30 E		1150	NORTH	290	WEST	EDDY

Bottom Hole Location If Different From Surface

UL or lot No.	Section	Township	Range	Lot Idn	Feet from the	North/South line	Feet from the	East/West line	County
E	11	24 S	30 E		1580	NORTH	909	WEST	EDDY

Dedicated Acres	Joint or Infill	Consolidation Code	Order No.
360			

NO ALLOWABLE WILL BE ASSIGNED TO THIS COMPLETION UNTIL ALL INTERESTS HAVE BEEN CONSOLIDATED
OR A NON-STANDARD UNIT HAS BEEN APPROVED BY THE DIVISION



SURFACE LOCATION
DELAWARE PT
Lat - N 32°15'02.81"
Long - W 103°52'34.12"
NMSPCE- E 641339.623
(NAD-27)
BOTTOM
HOLE LOCATION
Lat - N 32°14'06.48"
Long - W 103°51'24.53"
NMSPCE- N 449586.83
E 647340.96
(NAD-27)

OPERATOR CERTIFICATION

I hereby certify that the information contained herein is true and complete to the best of my knowledge and belief, and that this organization either owns a working interest or unleased mineral interest in the land including the proposed bottom hole location or has a right to drill this well at this location pursuant to a contract with an owner of such a mineral or working interest, or to a voluntary pooling agreement or a compulsory pooling order heretofore entered by the division.

Brian A. Braun 1-22-13
Signature Date

Brian A. Braun

Printed Name
babraun@basspet.com

Email Address

SURVEYOR CERTIFICATION

I hereby certify that the well location shown on this plat was plotted from field notes of actual surveys made by me or under my supervision, and that the same is true and correct to the best of my belief.

Date Surveyed
Signature & Seal of Professional Surveyor

Gary L. Jones
1-22-13

Gary L. Jones
1-22-13

Certificate No. Gary L. Jones 7977

BASIN SURVEYS

26660