

DISTRICT I
1625 N. FRENCH DR., HOBBS, NM 88240

DISTRICT II
1301 W. GRAND AVENUE, ARTESIA, NM 88210

DISTRICT III
1000 Rio Brazos Rd., Aztec, NM 87410

DISTRICT IV
1220 S. ST. FRANCIS DR., SANTA FE, NM 87505

State of New Mexico
Energy, Minerals and Natural Resources Department

OIL CONSERVATION DIVISION
1220 SOUTH ST. FRANCIS DR.
Santa Fe, New Mexico 87505

RECEIVED

AUG 30 2010

Form C
Revised October 12, 2009
Appropriate District
State Lease - 4 C
Fee Lease - 3 C

WELL LOCATION AND ACREAGE DEDICATION PLAT

AMENDED REI

| | | |
|----------------------------|---|-----------------------------------|
| API Number 30-015-37603 | Pool Code 17970 | Pool Name Dog Canyon; Wolfcamp |
| Property Code 38044 | Property Name CARBON VALLEY 31 FEDERAL COM | Well Number 1H |
| OGRID No. 15363 | Operator Name MURCHISON OIL & GAS, INC. | Elevation 3558' |

Surface Location

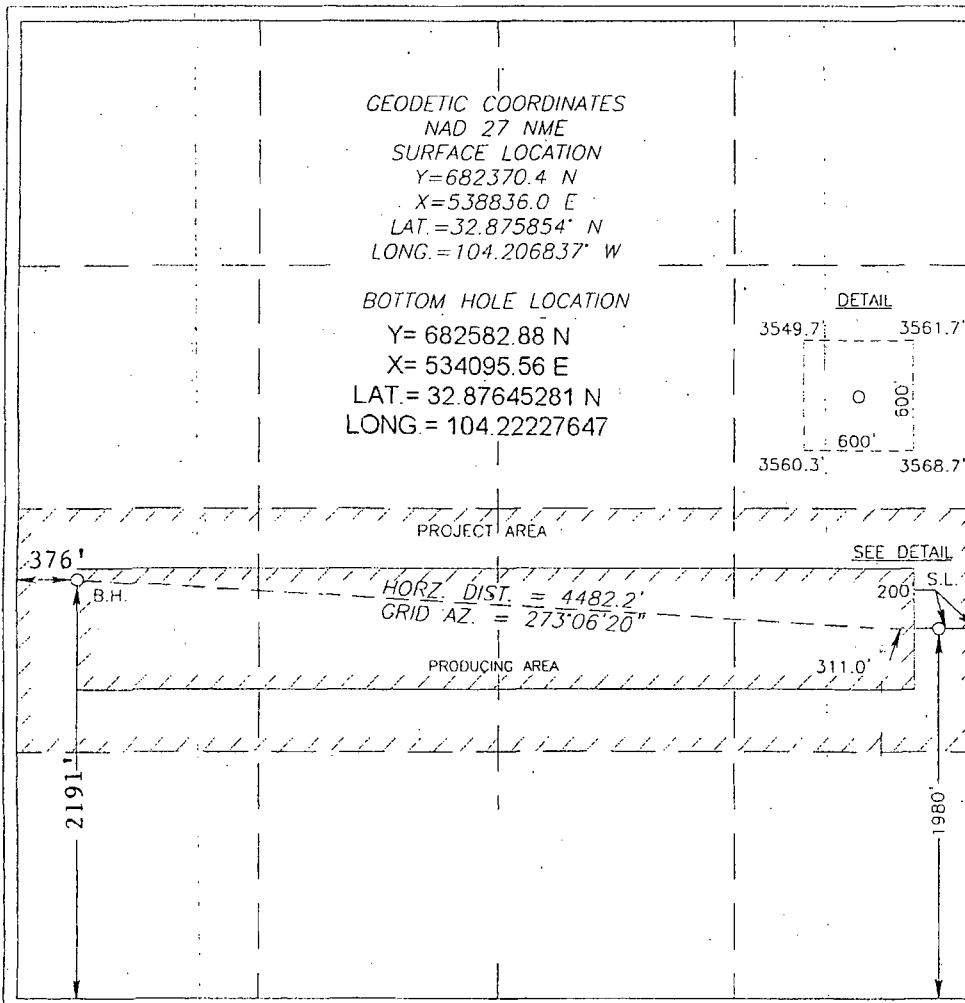
| UL or lot No. | Section | Township | Range | Lot Idn | Feet from the | North/South line | Feet from the | East/West line | Coun |
|---------------|---------|----------|-------|---------|---------------|------------------|---------------|----------------|------|
| I | 31 | 16-S | 28-E | | 1980 | SOUTH | 200 | EAST | EDI |

Bottom Hole Location If Different From Surface

| UL or lot No. | Section | Township | Range | Lot Idn | Feet from the | North/South line | Feet from the | East/West line | Coun |
|---------------|---------|----------|-------|---------|---------------|------------------|---------------|----------------|------|
| L | 31 | 16-S | 28-E | | 2191 | SOUTH | 376 | WEST | EDI |

| Dedicated Acres | Joint or Infill | Consolidation Code | Order No. |
|-----------------|-----------------|--------------------|-----------|
| | | | |

NO ALLOWABLE WILL BE ASSIGNED TO THIS COMPLETION UNTIL ALL INTERESTS HAVE BEEN CONSOLIDATED
OR A NON-STANDARD UNIT HAS BEEN APPROVED BY THE DIVISION



OPERATOR CERTIFICATION

I hereby certify that the information herein is true and complete to the best of my knowledge and belief, and that this organization either owns a working interest or unleased mineral interest in the land including the proposed bottom hole location or has a right to drill this well at this location pursuant to a contract with an owner of such mineral or working interest or to a voluntary pooling agreement or a compulsory pooling order heretofore entered by the division.

A. Arnold Nall 8/31/10
Signature Date
A. Arnold Nall
Printed Name

SURVEYOR CERTIFICATION

I hereby certify that the well location shown on this plat was plotted from field notes of actual surveys made by me or under my supervision, and that the same are true and correct to the best of my belief.

DECEMBER 4, 2009
Date Surveyed
Signature & Seal of Professional Surveyor
Ronald J. Eidson 10/17/20
10.15.0907

Certificate No. GARY EIDSON 126
RONALD J. EIDSON 32