

District I
1625 N. French Dr., Hobbs, NM 88240
District II
1301 W. Grand Avenue, Artesia, NM 88210
District III
1000 Rio Brazos Rd., Aztec, NM 87410
District IV
1220 S. St. Francis Dr., Santa Fe, NM 87505

State of New Mexico
Energy, Minerals & Natural Resources Dept.
OIL CONSERVATION DIVISION
1220 South St. Francis Dr.
Santa Fe, NM 87505

RECEIVED

APR 30 2013

NMOCB ARTESIA

Form C-102
Revised October 15, 2009
Submit one copy to appropriate
District Office

☐ AMENDED REPORT

WELL LOCATION AND ACREAGE DEDICATION PLAT

¹ API Number 30-015-40221	² Pool Code 96746	³ Pool Name HACKBERRY; BONE SPRING EAST
⁴ Property Code 39114	⁵ Property Name REGULUS "26" FEDERAL	⁶ Well Number 3H
⁷ OGRID No. 6137	⁸ Operator Name DEVON ENERGY PRODUCTION COMPANY, L.P.	⁹ Elevation 3494.4

¹⁰ Surface Location

UL or lot no. I	Section 26	Township 19 S	Range 31 E	Lot Idn	Feet from the 1700	North/South line SOUTH	Feet from the 340	East/West line EAST	County EDY
--------------------	---------------	------------------	---------------	---------	-----------------------	---------------------------	----------------------	------------------------	---------------

¹¹ Bottom Hole Location If Different From Surface

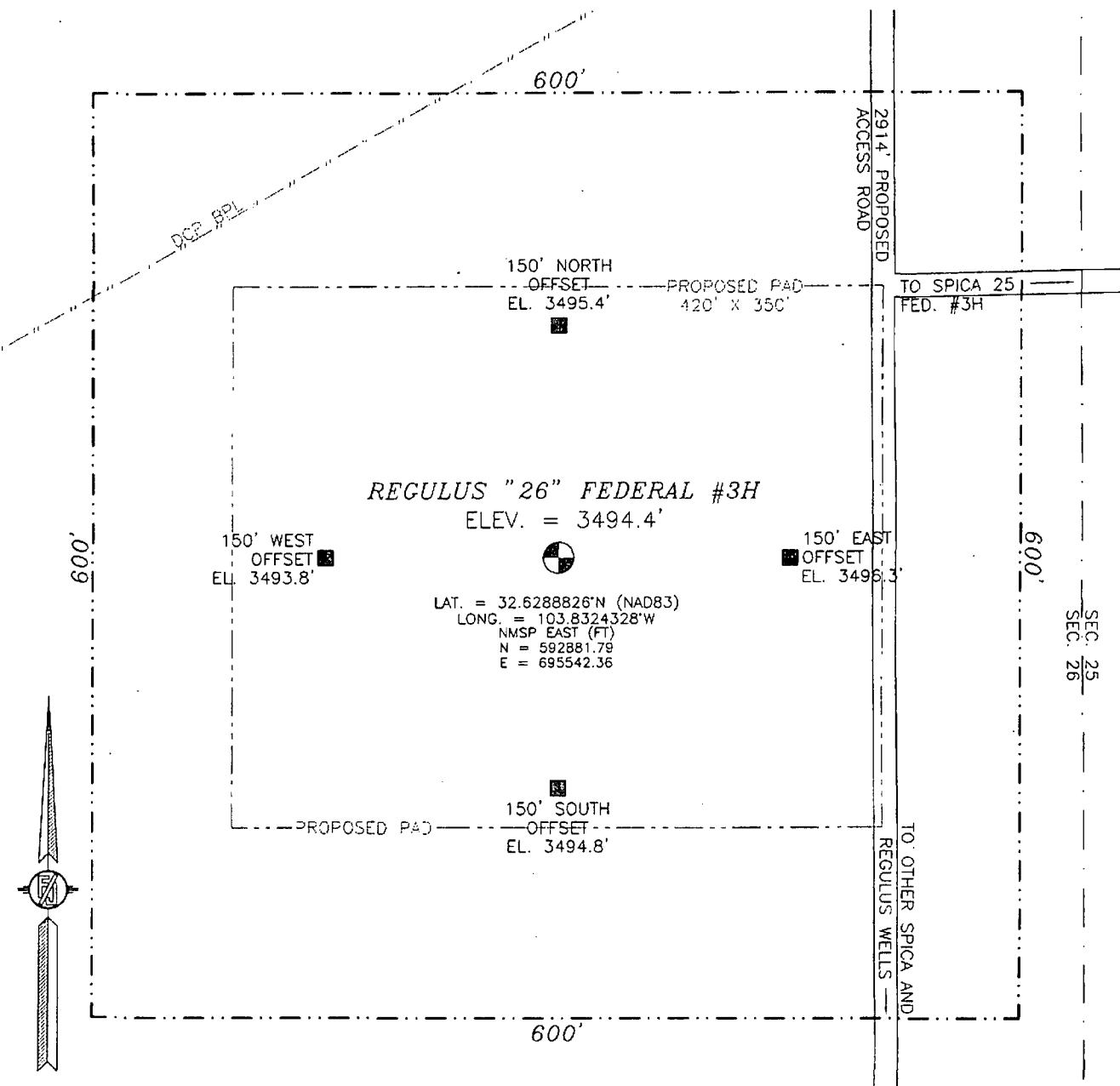
UL or lot no. L	Section 26	Township 19 S	Range 31 E	Lot Idn	Feet from the 1658	North/South line SOUTH	Feet from the 432	East/West line WEST	County EDDY
--------------------	---------------	------------------	---------------	---------	-----------------------	---------------------------	----------------------	------------------------	----------------

¹² Dedicated Acres 160	¹³ Joint or Infill	¹⁴ Consolidation Code	¹⁵ Order No.
--------------------------------------	-------------------------------	----------------------------------	-------------------------

No allowable will be assigned to this completion until all interests have been consolidated or a non-standard unit has been approved by the division.

NW CORNER SEC. 26 LAT. = 32.6387061°N LONG. = 103.8485138°W NMSP EAST (FT) N = 596432.70 E = 690575.37	PP: 1821' FSL & 995' FEL Project Area: Producing Area:	NE CORNER SEC. 26 LAT. = 32.6387288°N LONG. = 103.8313556°W NMSP EAST (FT) N = 596465.51 E = 695857.07	¹⁷ OPERATOR CERTIFICATION I hereby certify that the information contained herein is true and complete to the best of my knowledge and belief, and that this organization either owns a working interest or released mineral interest in the land including the proposed bottom hole location or has a right to drill this well at this location pursuant to a contract with an owner of such a mineral or working interest, or to a voluntary pooling agreement or a compulsory pooling order heretofore entered by the division. Signature: <i>Judith A. Barnett</i> Date: 2-12-13 Printed Name: Judith A. Barnett, Regulatory Specialist
BOTTOM OF HOLE LAT. = 32.6288622°N LONG. = 103.8473882°W NMSP EAST (FT) N = 592853.00 E = 690938.87	REGULUS "26" FEDERAL #3H ELEV. = 3494.4' LAT. = 32.6288826°N (MAD83) LONG. = 103.8324328°W NMSP EAST (FT) N = 592881.79 E = 695542.36	SURFACE LOCATION LAT. = 32.6242126°N LONG. = 103.8313170°W NMSP EAST (FT) N = 591184.42 E = 695893.90	¹⁸ SURVEYOR CERTIFICATION I hereby certify that the well location shown on this plat was plotted from field notes of actual surveys made by me or under my supervision, and that the same is true and correct to the best of my belief. OCTOBER 18, 2011 Date of Survey Signature and Seal of Professional Surveyor: <i>Filimon F. Jaramillo</i> Certificate Number: FILIMON F. JARAMILLO, PLS 12797 SURVEY NO. 607
BOTTOM OF HOLE LAT. = 32.6241893°N LONG. = 103.8484791°W NMSP EAST (FT) N = 591151.41 E = 690610.15		SE CORNER SEC. 26 LAT. = 32.6242126°N LONG. = 103.8313170°W NMSP EAST (FT) N = 591184.42 E = 695893.90	

SECTION 26, TOWNSHIP 19 SOUTH, RANGE 31 EAST, N.M.P.M.
EDDY COUNTY, STATE OF NEW MEXICO



010 50 100 200

SCALE 1" = 100'

DIRECTIONS TO LOCATION

FROM PAVED CR. 248 (LUSK PLANT) AND PAVED CR. #222 (SHUGART) GO EAST ON CR. 248 1.7 MILES, TURN RIGHT ON CALICHE ROAD AND GO SOUTH 0.45 MILES, TURN LEFT AND GO EAST 0.45 MILES, TURN RIGHT AND GO SOUTH 0.5 MILES, TURN RIGHT AND GO WEST 0.5 MILES, TURN LEFT ON OLD CALICHE ROAD AND GO SOUTH 0.2 MILES TO A PROPOSED ROAD SURVEY AND FOLLOW FLAGS SOUTH 291' THEN SOUTHEAST 741' THEN SOUTH 1882' TO THE PROPOSED NORTHEAST CORNER OF PAD FOR THIS LOCATION.

DEVON ENERGY PRODUCTION COMPANY, L.P.

REGULUS "26" FEDERAL #3H

LOCATED 1700 FT. FROM THE SOUTH LINE
AND 340 FT. FROM THE EAST LINE OF
SECTION 26, TOWNSHIP 19 SOUTH,
RANGE 31 EAST, N.M.P.M.

EDDY COUNTY, STATE OF NEW MEXICO

OCTOBER 18, 2011

SURVEY NO. 607

MADRON SURVEYING, INC. 301 SOUTH CANAL CARLSBAD, NEW MEXICO
(575) 234-3341