

District I
1625 N. French Dr., Hobbs, NM 88240
Phone: (575) 393-6161 Fax: (575) 393-0720
District II
811 S. First St., Artesia, NM 88210
Phone: (575) 748-1283 Fax: (575) 748-9720
District III
1000 Rio Brazos Road, Aztec, NM 87410
Phone: (505) 334-6178 Fax: (505) 334-6170
District IV
1220 S. St. Francis Dr., Santa Fe, NM 87505
Phone: (505) 476-3460 Fax: (505) 476-3462

State of New Mexico
Energy, Minerals & Natural Resources Department
OIL CONSERVATION DIVISION
1220 South St. Francis Dr.
Santa Fe, NM 87505

RECEIVED

MAY 15 2013

NMOC D ARTESIA

Form C-102

Revised August 1, 2011

Submit one copy to appropriate

District Office

☐ AMENDED REPORT

WELL LOCATION AND ACREAGE DEDICATION PLAT

¹ API Number 30-015-41359	² Pool Code 30216	³ Pool Name Hay Hollow North; Bone Spring
⁴ Property Code 39904	⁵ Property Name IRRITABLE 22 STATE COM	
⁷ OGRID No. 6137	⁸ Operator Name DEVON ENERGY PRODUCTION COMPANY, L.P.	⁶ Well Number 2H
		⁹ Elevation 3079.3

¹⁰ Surface Location

UL or lot no.	Section	Township	Range	Lot Idn	Feet from the	North/South line	Feet from the	East/West line	County
B	22	25 S	27 E		330	NORTH	1980	EAST	EDDY

¹¹ Bottom Hole Location If Different From Surface

UL or lot no.	Section	Township	Range	Lot Idn	Feet from the	North/South line	Feet from the	East/West line	County
O	22	25 S	27 E		330	SOUTH	1980	EAST	EDDY

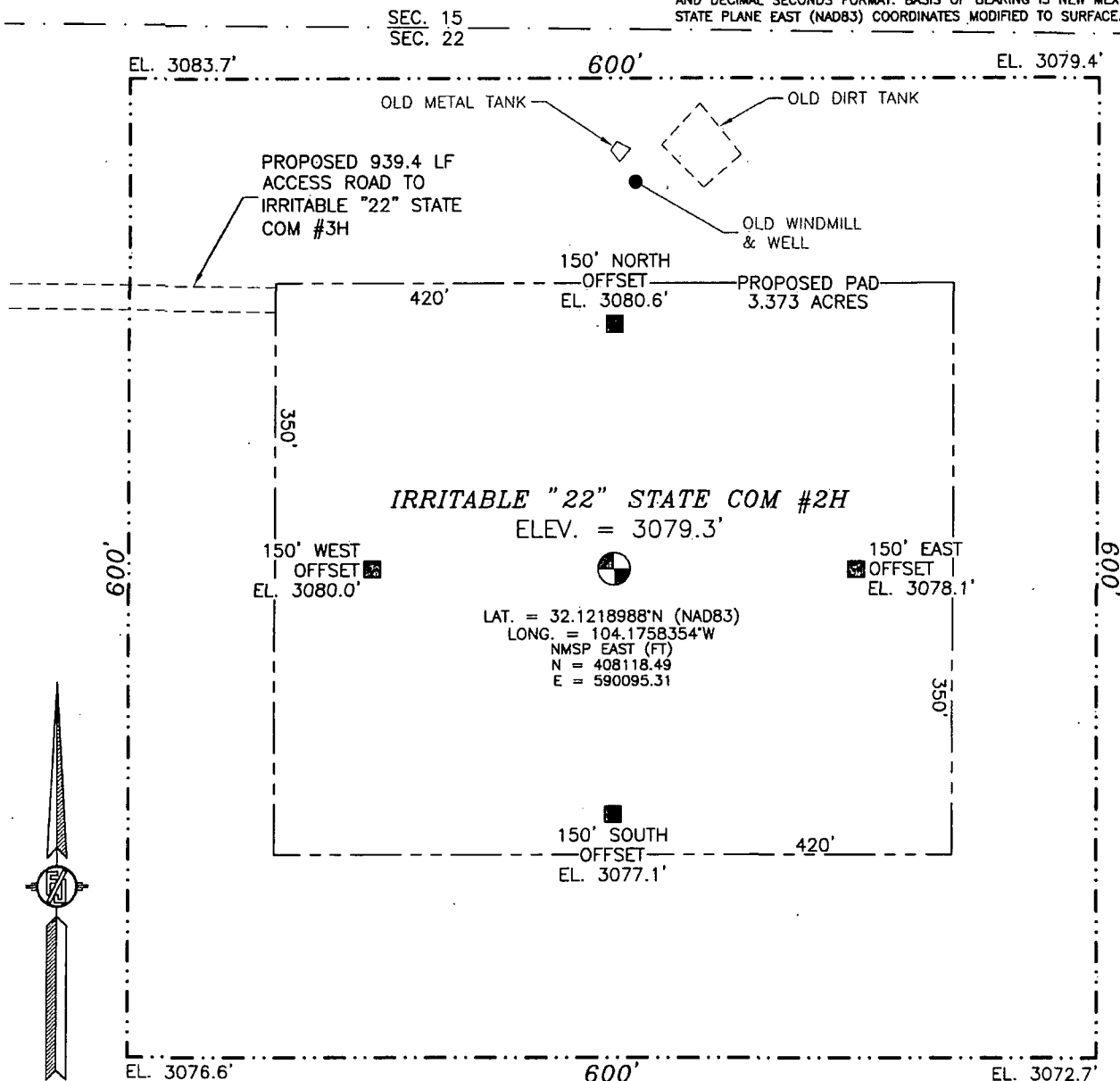
¹² Dedicated Acres	¹³ Joint or Infill	¹⁴ Consolidation Code	¹⁵ Order No.
160			

No allowable will be assigned to this completion until all interests have been consolidated or a non-standard unit has been approved by the division.

<p>S89°25'41"E 2660.40 FT</p> <p>NW CORNER SEC. 22 LAT. = 32.1229110°N LONG. = 104.1866355°W NMSP EAST (FT) N = 408481.98 E = 586751.32</p> <p>N Q CORNER SEC. 22 LAT. = 32.1228278°N LONG. = 104.1780424°W NMSP EAST (FT) N = 408455.42 E = 589411.58</p> <p>S89°24'56"E 2660.55 FT</p> <p>NE CORNER SEC. 22 LAT. = 32.1227423°N LONG. = 104.1694488°W NMSP EAST (FT) N = 408428.28 E = 592072.00</p> <p>1980'</p> <p>330'</p> <p>SURFACE LOCATION</p> <p>IRRITABLE "22" STATE COM #2H ELEV. = 3079.3' LAT. = 32.1218988°N (NAD83) LONG. = 104.1758354°W NMSP EAST (FT) N = 408118.49 E = 590095.31</p> <p>W Q CORNER SEC. 22 LAT. = 32.1156520°N LONG. = 104.1865238°W NMSP EAST (FT) N = 405841.36 E = 586789.51</p> <p>E Q CORNER SEC. 22 LAT. = 32.1154478°N LONG. = 104.1693795°W NMSP EAST (FT) N = 405774.75 E = 592097.48</p> <p>NOTE: LATITUDE AND LONGITUDE COORDINATES ARE SHOWN USING THE NORTH AMERICAN DATUM OF 1983 (NAD83) IN DEGREES MINUTES DECIMAL SECONDS FORMAT. BASIS OF BEARING IS NEW MEXICO STATE PLANE EAST (NAD83) COORDINATES MODIFIED TO SURFACE.</p> <p>BOTTOM OF HOLE LAT. = 32.1091453°N LONG. = 104.1757141°W NMSP EAST (FT) N = 403479.14 E = 590139.65</p> <p>BOTTOM OF HOLE</p> <p>SE CORNER SEC. 22 LAT. = 32.1081486°N LONG. = 104.1693133°W NMSP EAST (FT) N = 403119.52 E = 592122.02</p> <p>S Q CORNER SEC. 22 LAT. = 32.1082687°N LONG. = 104.1778628°W NMSP EAST (FT) N = 403159.26 E = 589474.83</p> <p>SW CORNER SEC. 22 LAT. = 32.1083889°N LONG. = 104.1864150°W NMSP EAST (FT) N = 403199.29 E = 586826.78</p> <p>N89°08'02"W 2648.35 FT</p> <p>N89°08'24"W 2647.49 FT</p>		<p>¹⁷ OPERATOR CERTIFICATION</p> <p>I hereby certify that the information contained herein is true and complete to the best of my knowledge and belief, and that this organization either owns a working interest or released mineral interest in the land including the proposed bottom hole location or has a right to drill this well at this location pursuant to a contract with an owner of such a mineral or working interest, or to a voluntary pooling agreement or a compulsory pooling order heretofore entered by the division.</p> <p><i>Patti Riechers</i>, 5/13/2013 Signature Date</p> <p>Patti Riechers, Regulatory Specialist Printed Name</p> <p>Patti.Riechers@dmv.com E-mail Address</p> <p>¹⁸ SURVEYOR CERTIFICATION</p> <p>I hereby certify that the well location shown on this plat was plotted from field notes of actual surveys made by me or under my supervision, and that the same is true and correct to the best of my belief.</p> <p>MARCH 18, 2013 Date of Survey</p> <p><i>[Signature]</i> Signature and Seal of Professional Surveyor</p> <p>Certificate Number 12797 SURVEY NO. 1620</p>
---	--	---

SECTION 22, TOWNSHIP 25 SOUTH, RANGE 27 EAST, N.M.P.M.
EDDY COUNTY, STATE OF NEW MEXICO

NOTE: LATITUDE AND LONGITUDE COORDINATES ARE SHOWN USING THE NORTH AMERICAN DATUM OF 1983 (NAD83) IN DEGREES, MINUTES AND DECIMAL SECONDS FORMAT. BASIS OF BEARING IS NEW MEXICO STATE PLANE EAST (NAD83) COORDINATES MODIFIED TO SURFACE.



010 50 100 200
SCALE 1" = 100'

DIRECTIONS TO LOCATION

FROM THE INTERSECTION OF CR 720 (BLACK RIVER VILLAGE) AND CR 774 (ROADRUNNER) GO SOUTHWEST ON CR 774 FOR APPROX. 8.8 MILES. GO EAST ON CALICHE LEASE ROAD FOR APPROX. 0.1 OF A MILE (ACROSS CATTLE GUARD). FOLLOW ROAD LATHS EAST (ACROSS NORTH SIDE OF #4H AND #3H LOCATIONS) FOR APPROX. 0.95 OF A MILE TO NORTHWEST CORNER PAD. LOCATION IS APPROX. 267 FT. SOUTHEAST.

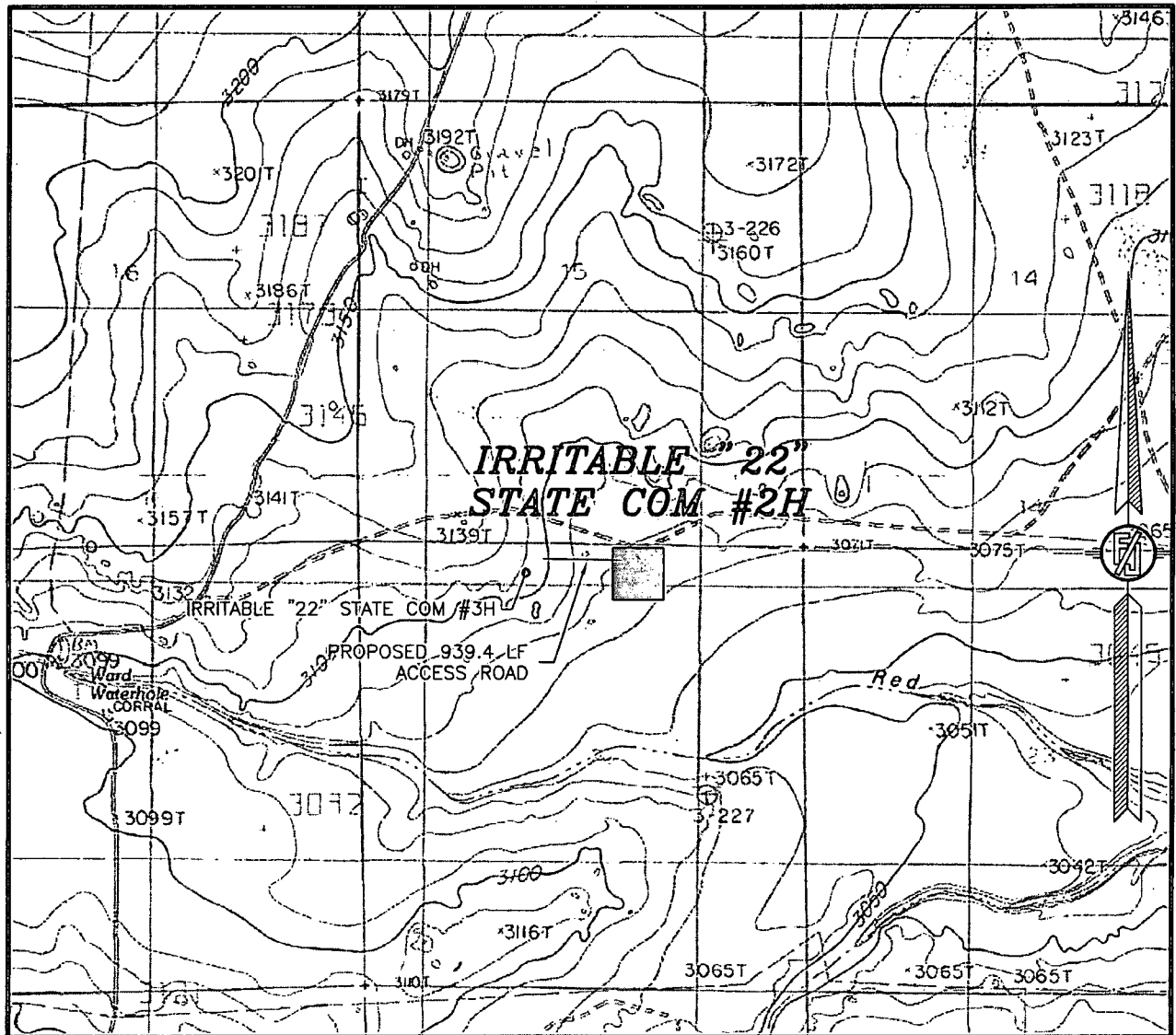
DEVON ENERGY PRODUCTION COMPANY, L.P.
IRRITABLE "22" STATE COM #2H
LOCATED 330 FT. FROM THE NORTH LINE
AND 1980 FT. FROM THE EAST LINE OF
SECTION 22, TOWNSHIP 25 SOUTH,
RANGE 27 EAST, N.M.P.M.
EDDY COUNTY, STATE OF NEW MEXICO

MARCH 18, 2013

SURVEY NO. 1620

MADRON SURVEYING, INC. 301 SOUTH CANAL CARLSBAD, NEW MEXICO
(575) 234-3341

SECTION 22, TOWNSHIP 25 SOUTH, RANGE 27 EAST, N.M.P.M.
EDDY COUNTY, STATE OF NEW MEXICO
LOCATION VERIFICATION MAP



USGS QUAD MAP:
COTTONWOOD HILLS

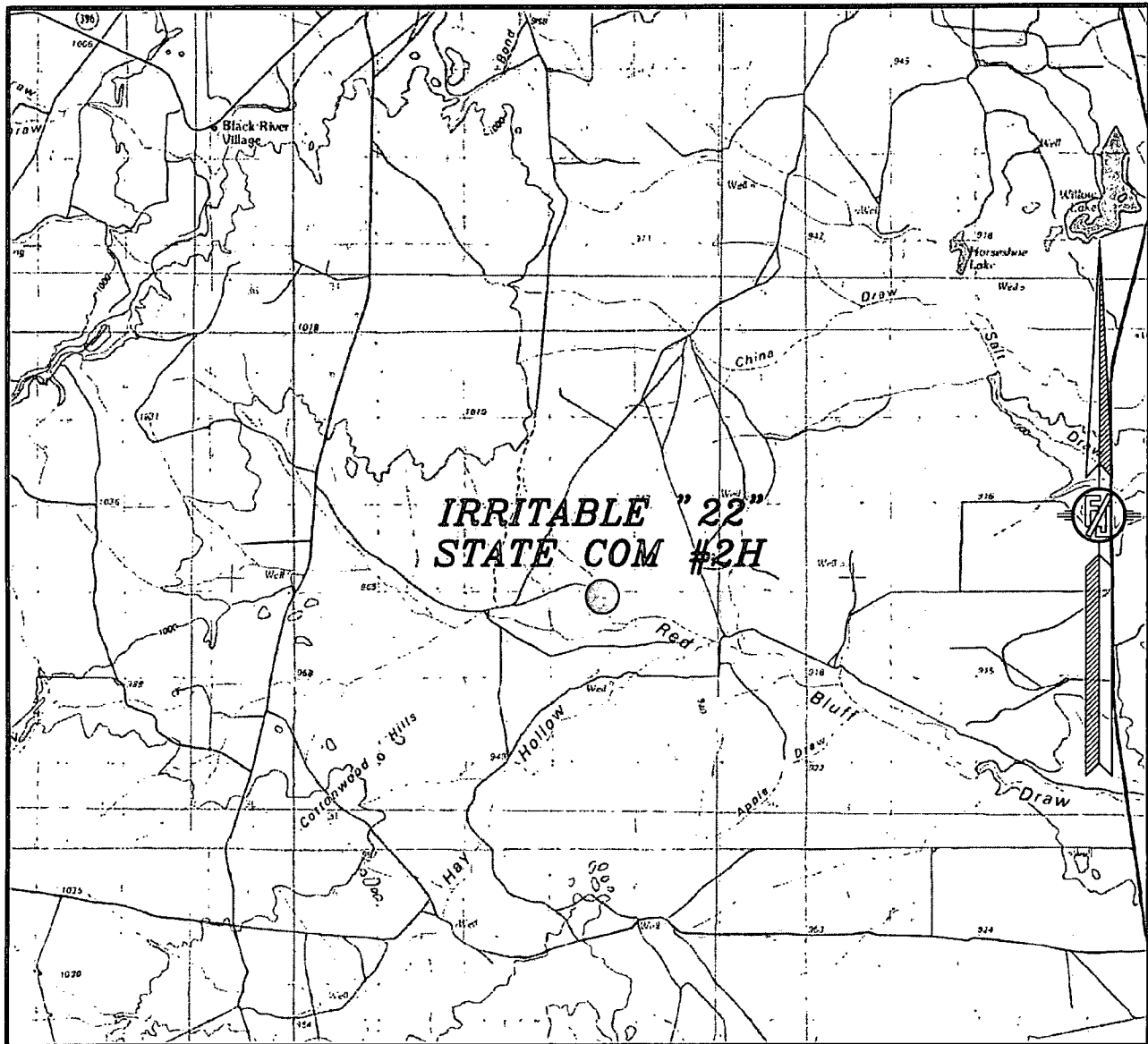
NOT TO SCALE

DEVON ENERGY PRODUCTION COMPANY, L.P.
IRRITABLE "22" STATE COM #2H
LOCATED 330 FT. FROM THE NORTH LINE
AND 1980 FT. FROM THE EAST LINE OF
SECTION 22, TOWNSHIP 25 SOUTH,
RANGE 27 EAST, N.M.P.M.
EDDY COUNTY, STATE OF NEW MEXICO

MARCH 18, 2013

MADRON SURVEYING, INC. 301 SOUTH CANAL SURVEY NO. 1620
(575) 234-3341 CARLSBAD, NEW MEXICO

SECTION 22, TOWNSHIP 25 SOUTH, RANGE 27 EAST, N.M.P.M.
EDDY COUNTY, STATE OF NEW MEXICO
VICINITY MAP



NOT TO SCALE

DEVON ENERGY PRODUCTION COMPANY, L.P.

IRRITABLE "22" STATE COM #2H

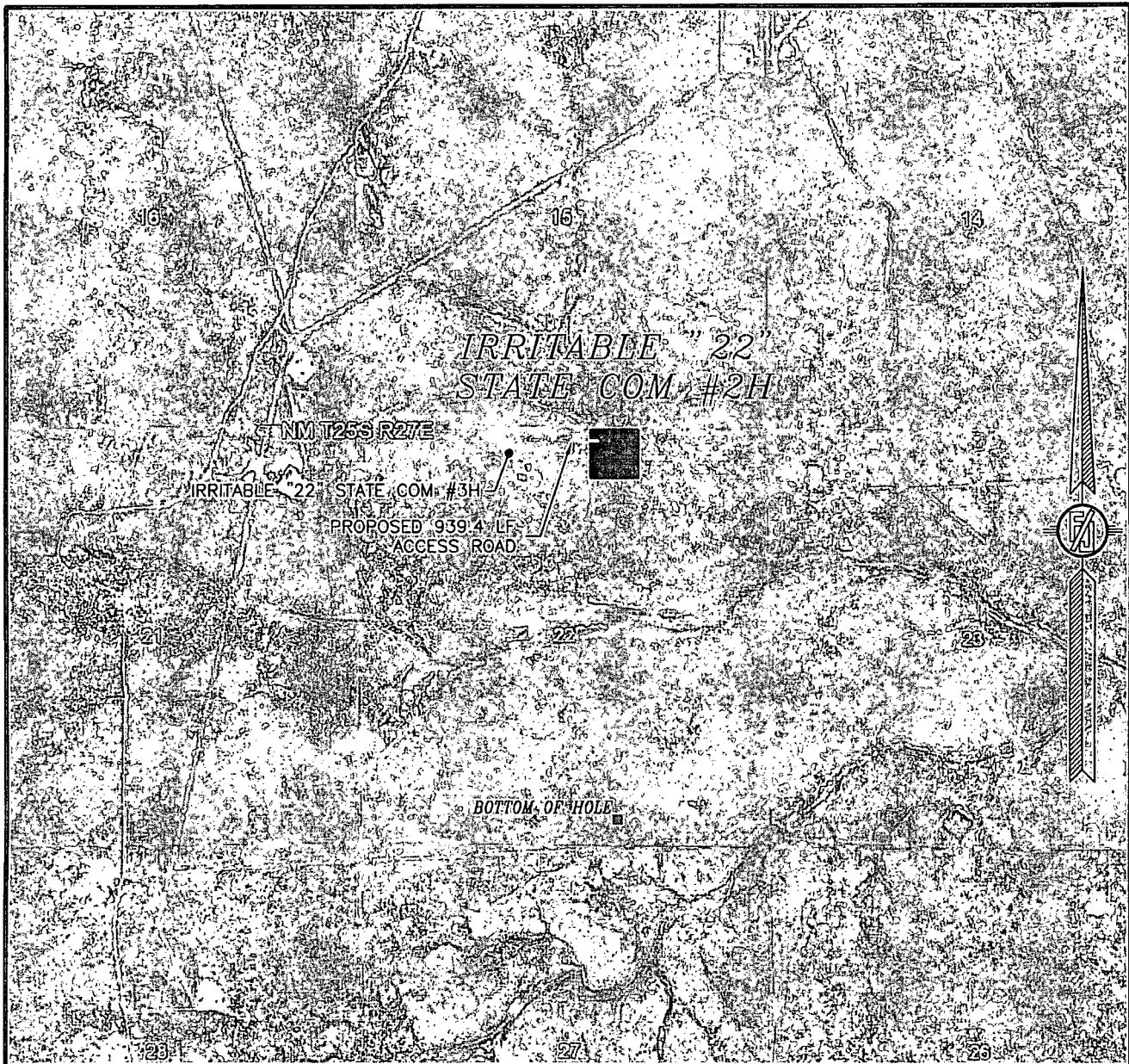
LOCATED 330 FT. FROM THE NORTH LINE
AND 1980 FT. FROM THE EAST LINE OF
SECTION 22, TOWNSHIP 25 SOUTH,
RANGE 27 EAST, N.M.P.M.
EDDY COUNTY, STATE OF NEW MEXICO

MARCH 18, 2013

SURVEY NO. 1620

MADRON SURVEYING, INC. 301 SOUTH CANAL CARLSBAD, NEW MEXICO
(575) 234-3341

SECTION 22, TOWNSHIP 25 SOUTH, RANGE 27 EAST, N.M.P.M.
EDDY COUNTY, STATE OF NEW MEXICO
AERIAL PHOTO



NOT TO SCALE
AERIAL PHOTO:
GOOGLE EARTH
JULY 2011

DEVON ENERGY PRODUCTION COMPANY, L.P.

IRRITABLE "22" STATE COM #2H

LOCATED 330 FT. FROM THE NORTH LINE
AND 1980 FT. FROM THE EAST LINE OF
SECTION 22, TOWNSHIP 25 SOUTH,
RANGE 27 EAST, N.M.P.M.
EDDY COUNTY, STATE OF NEW MEXICO

MARCH 18, 2013

SURVEY NO. 1620

MADRON SURVEYING, INC. 301 SOUTH CANAL
(575) 234-3341

CARLSBAD, NEW MEXICO