

District I
1625 N. French Dr., Hobbs, NM 88240
District II
1301 W. Grand Avenue, Artesia, NM 88210
District III
1000 Rio Brazos Rd., Aztec, NM 87410
District IV
1220 S. St. Francis Dr., Santa Fe, NM 87505

State of New Mexico
Energy, Minerals & Natural Resources Department
OIL CONSERVATION DIVISION
1220 South St. Francis Dr.
Santa Fe, NM 87505

RECEIVED

MAY 14 2013

Form C-102

Revised October 15, 2009

Submit one copy to appropriate

District Office

☐ AMENDED REPORT

WELL LOCATION AND ACREAGE DEDICATION PLAT

¹ API Number 30-015-40626	² Pool Code 41480	³ Pool Name Lusk; Bone Spring, West
⁴ Property Code 39413	⁵ Property Name MIMOSA 24 FED COM	⁶ Well Number 1H
⁷ GRID No. 6137	⁸ Operator Name DEVON ENERGY PRODUCTION COMPANY, L.P.	⁹ Elevation 3537.5

¹⁰ Surface Location

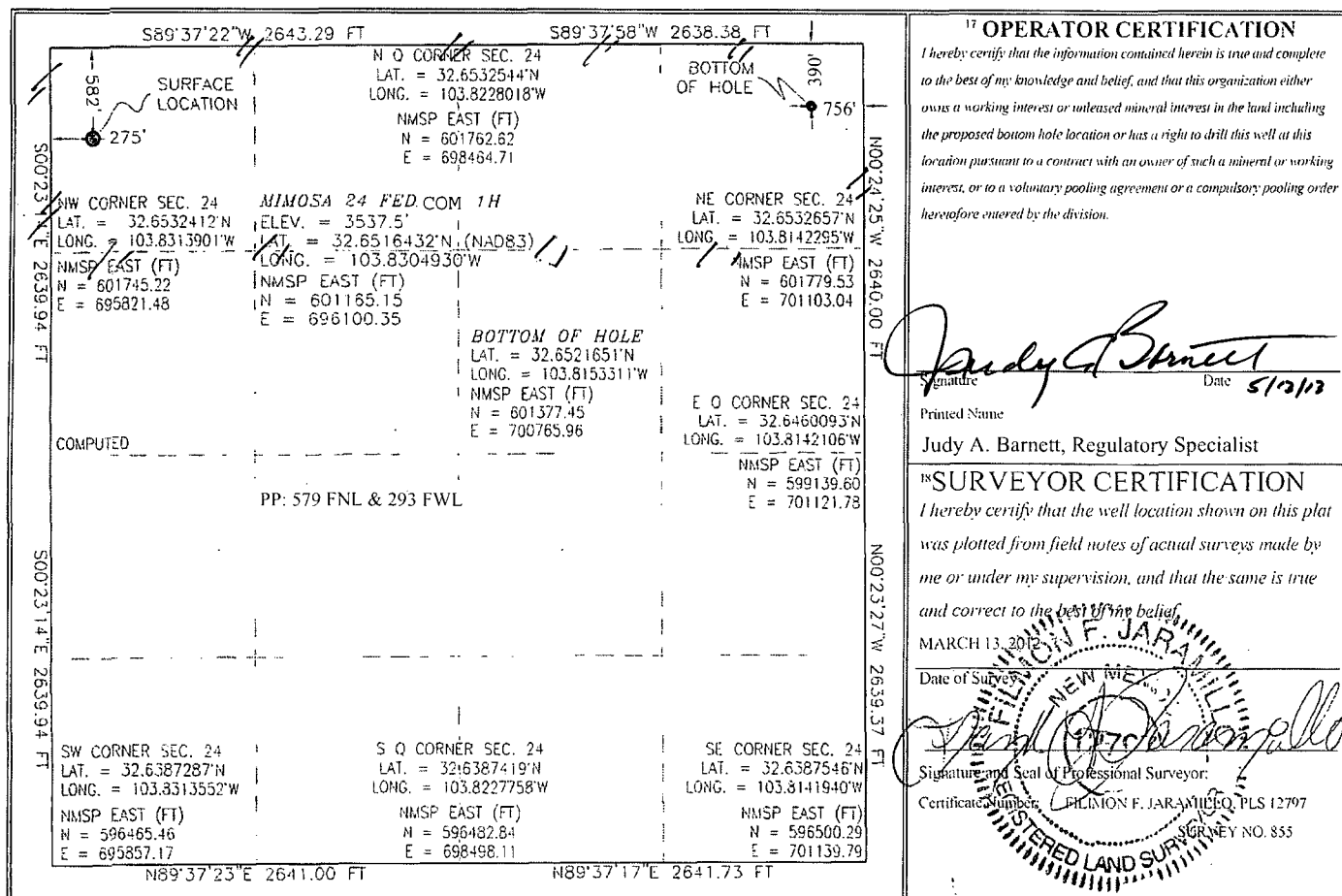
UL or lot no.	Section	Township	Range	Lot Idn	Feet from the	North/South line	Feet from the	East/West line	County
D	24	19 S	31 E		582	NORTH	275	WEST	EDDY

¹¹ Bottom Hole Location If Different From Surface

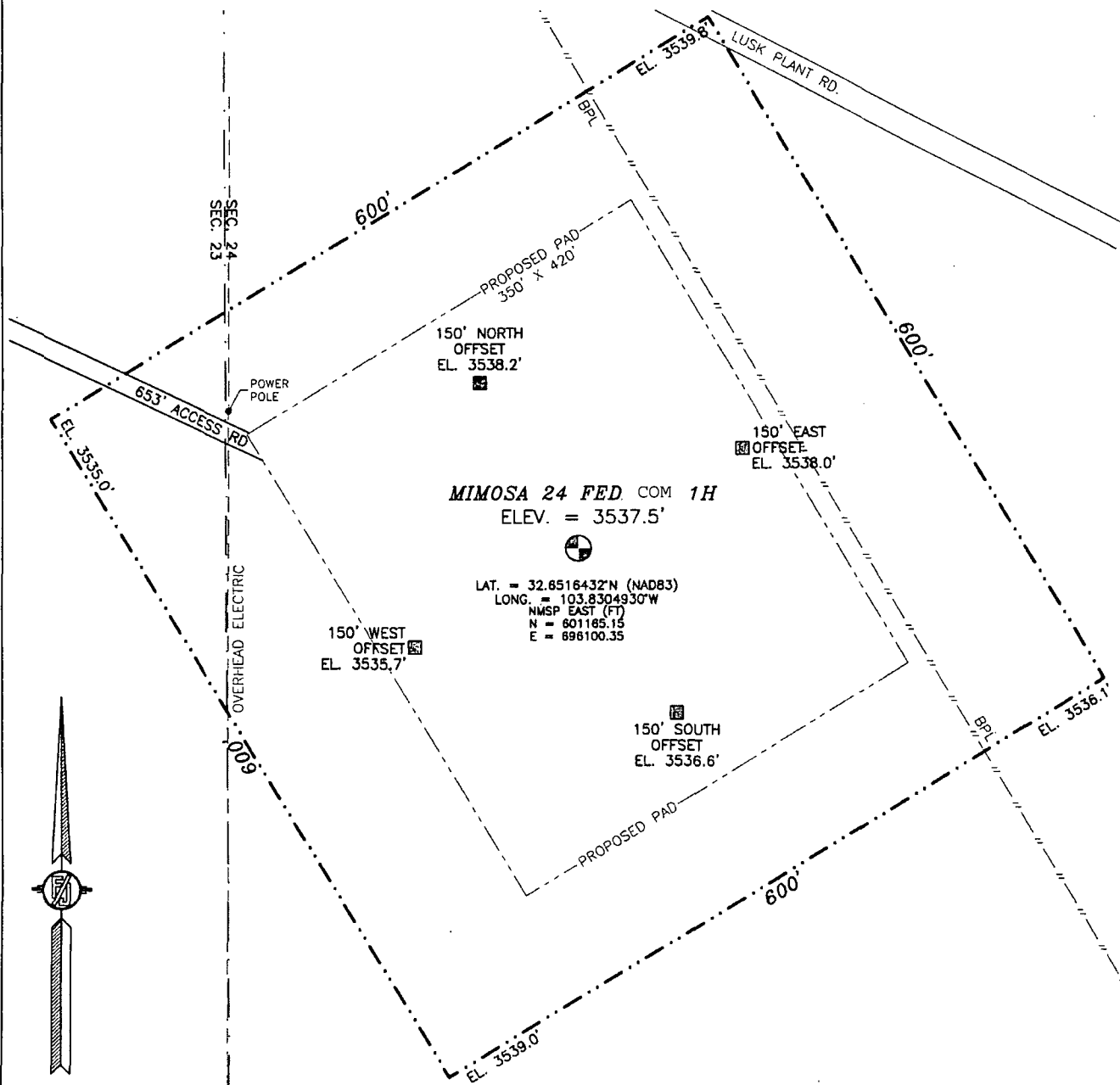
UL or lot no.	Section	Township	Range	Lot Idn	Feet from the	North/South line	Feet from the	East/West line	County
A	24	19 S	31 E		390	NORTH	756	EAST	EDDY

¹² Dedicated Acres 160	¹³ Joint or Infill	¹⁴ Consolidation Code	¹⁵ Order No.
---	-------------------------------	----------------------------------	-------------------------

No allowable will be assigned to this completion until all interests have been consolidated or a non-standard unit has been approved by the division.



SECTION 24, TOWNSHIP 19 SOUTH, RANGE 31 EAST, N.M.P.M.
EDDY COUNTY, STATE OF NEW MEXICO



012 60 120 240

SCALE 1" = 120'

DIRECTIONS TO LOCATION

FROM THE INTERSECTION OF CR 222 (SHUGART RD.) AND CR 248 (LUSK PLANT ROAD) GO SE. ON CR 248 1.9 MILES SITE IS ABOUT 450 FT ON RIGHT (SW).

DEVON ENERGY PRODUCTION COMPANY, L.P.

MIMOSA 24 FED COM 1H

LOCATED 582 FT. FROM THE NORTH LINE
AND 275 FT. FROM THE WEST LINE OF
SECTION 24, TOWNSHIP 19 SOUTH,
RANGE 31 EAST, N.M.P.M.
EDDY COUNTY, STATE OF NEW MEXICO

MARCH 13, 2012

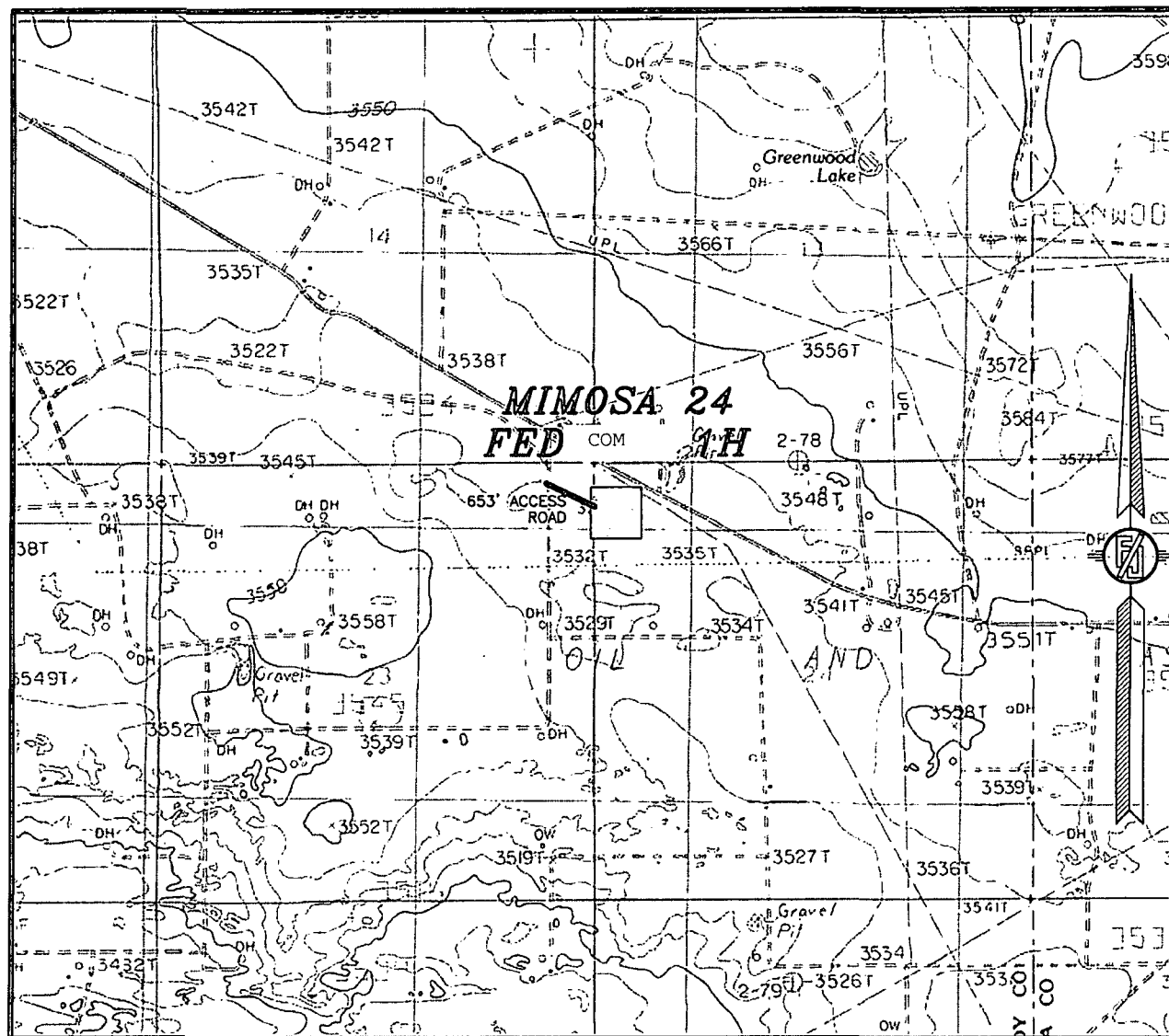
SURVEY NO. 855

MADRON SURVEYING, INC.

301 SOUTH CANAL
(575) 234-3341

CARLSBAD, NEW MEXICO

SECTION 24, TOWNSHIP 19 SOUTH, RANGE 31 EAST, N.M.P.M.
EDDY COUNTY, STATE OF NEW MEXICO
LOCATION VERIFICATION MAP



USGS QUAD MAP:
GREENWOOD LAKE

NOT TO SCALE

DEVON ENERGY PRODUCTION COMPANY, L.P.
MIMOSA 24 FED COM 1H

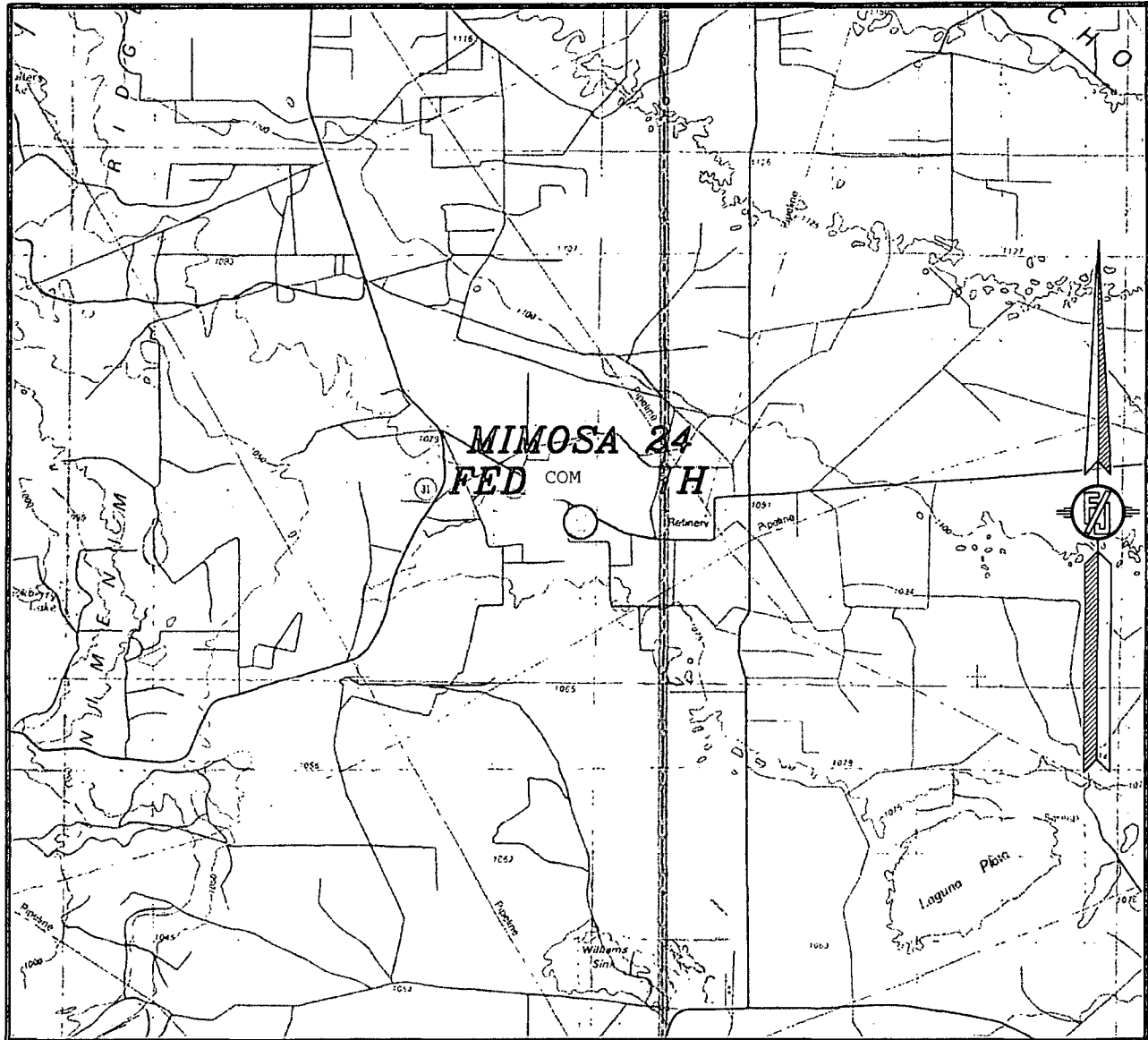
LOCATED 582 FT. FROM THE NORTH LINE
AND 275 FT. FROM THE WEST LINE OF
SECTION 24, TOWNSHIP 19 SOUTH,
RANGE 31 EAST, N.M.P.M.
EDDY COUNTY, STATE OF NEW MEXICO

MARCH 13, 2012

SURVEY NO. 855

MADRON SURVEYING, INC. 301 SOUTH CANAL (575) 234-3341 CARLSBAD, NEW MEXICO

SECTION 24, TOWNSHIP 19 SOUTH, RANGE 31 EAST, N.M.P.M.
EDDY COUNTY, STATE OF NEW MEXICO
VICINITY MAP



NOT TO SCALE

DEVON ENERGY PRODUCTION COMPANY, L.P.

MIMOSA 24 FED COM 1H

LOCATED 582 FT. FROM THE NORTH LINE
AND 275 FT. FROM THE WEST LINE OF
SECTION 24, TOWNSHIP 19 SOUTH,
RANGE 31 EAST, N.M.P.M.
EDDY COUNTY, STATE OF NEW MEXICO

MARCH 13, 2012

SURVEY NO. 855

MADRON SURVEYING, INC. 301 SOUTH CANAL CARLSBAD, NEW MEXICO
(575) 234-3341