

DISTRICT I
1625 N. French Dr., Hobbs, NM 88240
Phone (575) 393-6161 Fax: (575) 393-0720

DISTRICT II
1301 W. Grand Avenue, Artesia, NM 88210
Phone (505) 746-1283 Fax: (505) 746-9720

DISTRICT III
1000 Rio Brazos Rd., Aztec, NM 87410
Phone (505) 334-6178 Fax: (505) 334-6170

DISTRICT IV
1220 S. St. Francis Dr., Santa Fe, NM 87505
Phone (505) 478-3460 Fax: (505) 478-3462

State of New Mexico
Energy, Minerals and Natural Resources Department

Form C-102
Revised August 1, 2011

Submit one copy to appropriate
District Office

OIL CONSERVATION DIVISION
1220 South St. Francis Dr.
Santa Fe, New Mexico 87505

WELL LOCATION AND ACREAGE DEDICATION PLAT

☐ AMENDED REPORT

API Number 30-05-41408	Pool Code 97712	County LINE TANK	Pool Name Wildcat Wolfcamp
Property Code 28584	Property Name GRANDE MIKE AKZ STATE	RECEIVED	Well Number 2H
OGRID No. 025575	Operator Name YATES PETROLEUM CORP.	MAY 29 2013	Elevation 3747'

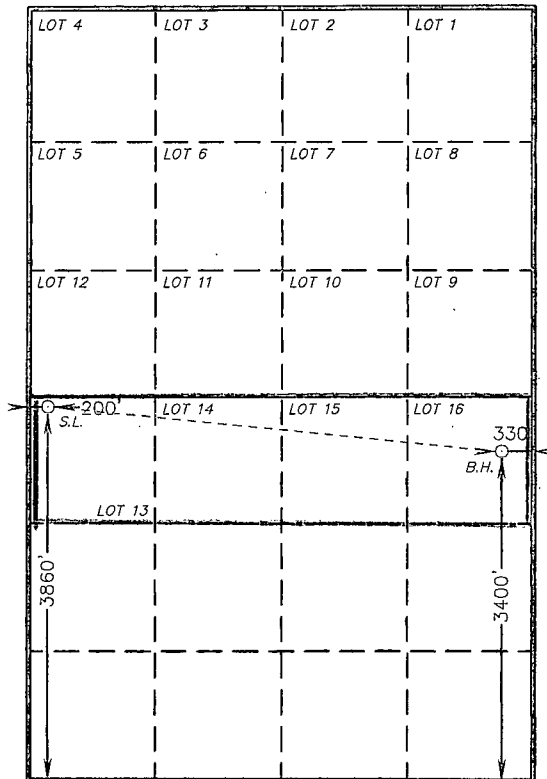
Surface Location							NMOC ARTESIA		
UL or lot No.	Section	Township	Range	Lot Idn	Feet from the	North/South line	Feet from the	East/West line	County
LOT 13	2	16 S	29 E		3860	SOUTH	200	WEST	EDDY

Bottom Hole Location If Different From Surface

UL or lot No.	Section	Township	Range	Lot Idn	Feet from the	North/South line	Feet from the	East/West line	County
LOT 16	2	16 S	29 E		3400	SOUTH	330	EAST	EDDY
Dedicated Acres 160		Joint or Infill	Consolidation Code	Order No.					

NO ALLOWABLE WILL BE ASSIGNED TO THIS COMPLETION UNTIL ALL INTERESTS HAVE BEEN CONSOLIDATED
OR A NON-STANDARD UNIT HAS BEEN APPROVED BY THE DIVISION

SURFACE LOCATION
Lat - N 32°57'14.66"
Long - W 104°03'12.38"
NMSPC- N 710941.197
E 627191.166
(NAD-83)



PROPOSED BOTTOM HOLE LOCATION
Lat - N 32°57'09.98"
Long - W 104°02'16.43"
NMSPC- N 710480.894
E 631959.500
(NAD-83)

OPERATOR CERTIFICATION

I hereby certify that the information contained herein is true and complete to the best of my knowledge and belief, and that this organization either owns a working interest or unleased mineral interest in the land including the proposed bottom hole location or has a right to drill this well at this location pursuant to a contract with an owner of such a mineral or working interest, or to a voluntary pooling agreement or a compulsory pooling order heretofore entered by the Division.

Signature **Cy Cowan** Date **5/29/13**

Printed Name

Email Address

SURVEYOR CERTIFICATION

I hereby certify that the well location shown on this plat was plotted from field notes of actual surveys made by me or under my supervision, and that the same is true and correct to the best of my belief.

GARY L. JONES
APR 10, 2013
Date Surveyed
Signature & Seal of Professional Surveyor
7977

Certificate No. Gary L. Jones 7977

BASIN SURVEYS 26575