

DISTRICT I
1625 N. French Dr., Hobbs, NM 88240
Phone: (575) 393-6161 Fax: (575) 393-0720

DISTRICT II
811 S. First St., Artesia, NM 88210
Phone: (575) 748-1283 Fax: (575) 748-9720

DISTRICT III
1000 Rio Brazos Road, Aztec, NM 87410
Phone: (505) 334-6178 Fax: (505) 334-6170

DISTRICT IV
1220 S. St. Francis Dr., Santa Fe, NM 87505
Phone: (505) 476-3460 Fax: (505) 476-3462

State of New Mexico
Energy, Minerals & Natural Resources Department

OIL CONSERVATION DIVISION
1220 South St. Francis Dr.
Santa Fe, New Mexico 87505

Form C-102
Revised August 1, 2011
Submit one copy to appropriate
District Office

☐ AMENDED REPORT

NMOCD ARTESIA

WELL LOCATION AND ACREAGE DEDICATION PLAT

API Number 30-015-41053	Pool Code 96830	Pool Name Artesia; Glorieta Yaso(o)
Property Code 308701	Property Name A STATE	Well Number 73
OGRID No. 873	Operator Name APACHE CORPORATION	Elevation 3667'

Surface Location

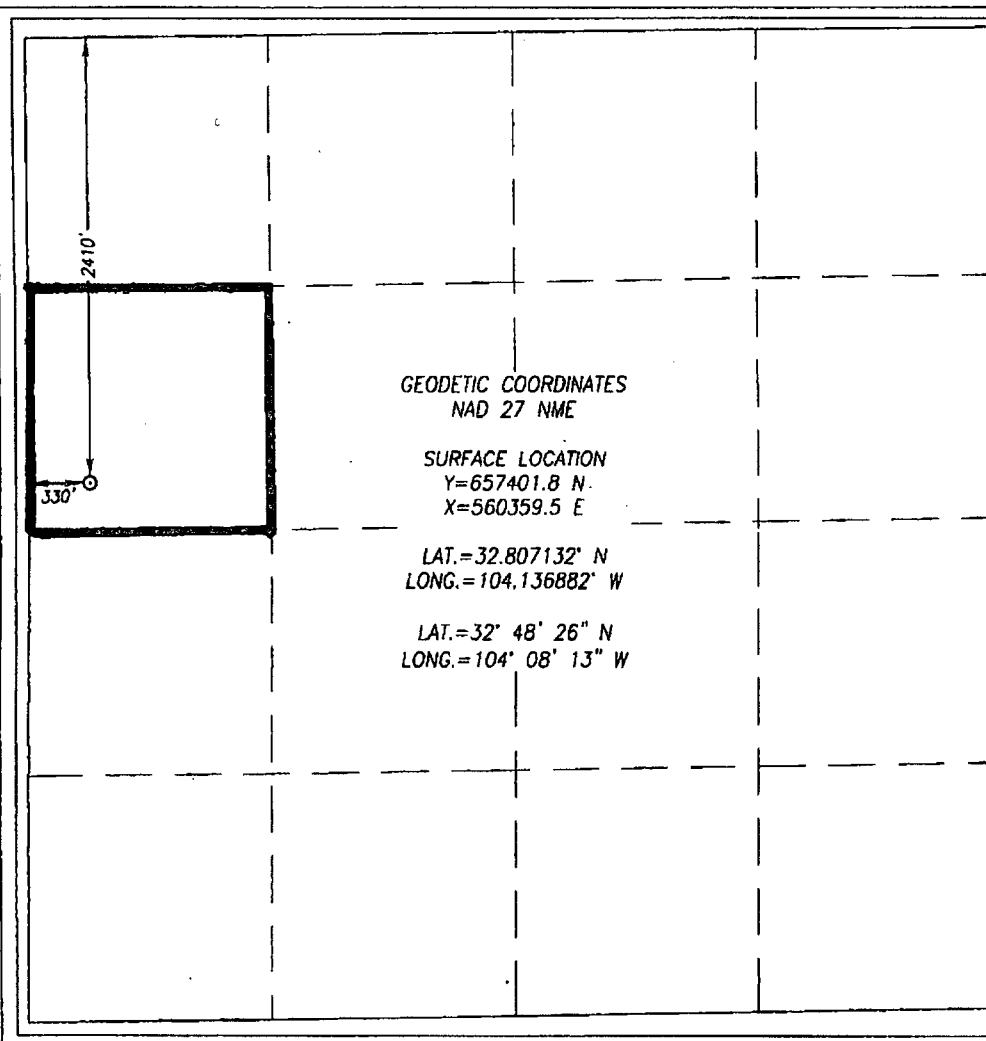
UL or lot No.	Section	Township	Range	Lot Idn	Feet from the	North/South line	Feet from the	East/West line	County
E	25	17-S	28-E		2410	NORTH	330	WEST	EDDY

Bottom Hole Location If Different From Surface

UL or lot No.	Section	Township	Range	Lot Idn	Feet from the	North/South line	Feet from the	East/West line	County

Dedicated Acres 40	Joint or Infill	Consolidation Code	Order No.
------------------------------	-----------------	--------------------	-----------

NO ALLOWABLE WILL BE ASSIGNED TO THIS COMPLETION UNTIL ALL INTERESTS HAVE BEEN CONSOLIDATED OR A NON-STANDARD UNIT HAS BEEN APPROVED BY THE DIVISION



OPERATOR CERTIFICATION

I hereby certify that the information herein is true and complete to the best of my knowledge and belief, and that this organization either owns a working interest or unleased mineral interest in the land including the proposed bottom hole location or has a right to drill this well at this location pursuant to a contract with an owner of such mineral or working interest, or to a voluntary pooling agreement or a compulsory pooling order heretofore entered by the division.

Vicki Brown 2/4/13
Signature Date
Vicki Brown
Printed Name
vicki.brown@apachecorp.com
E-mail Address

SURVEYOR CERTIFICATION

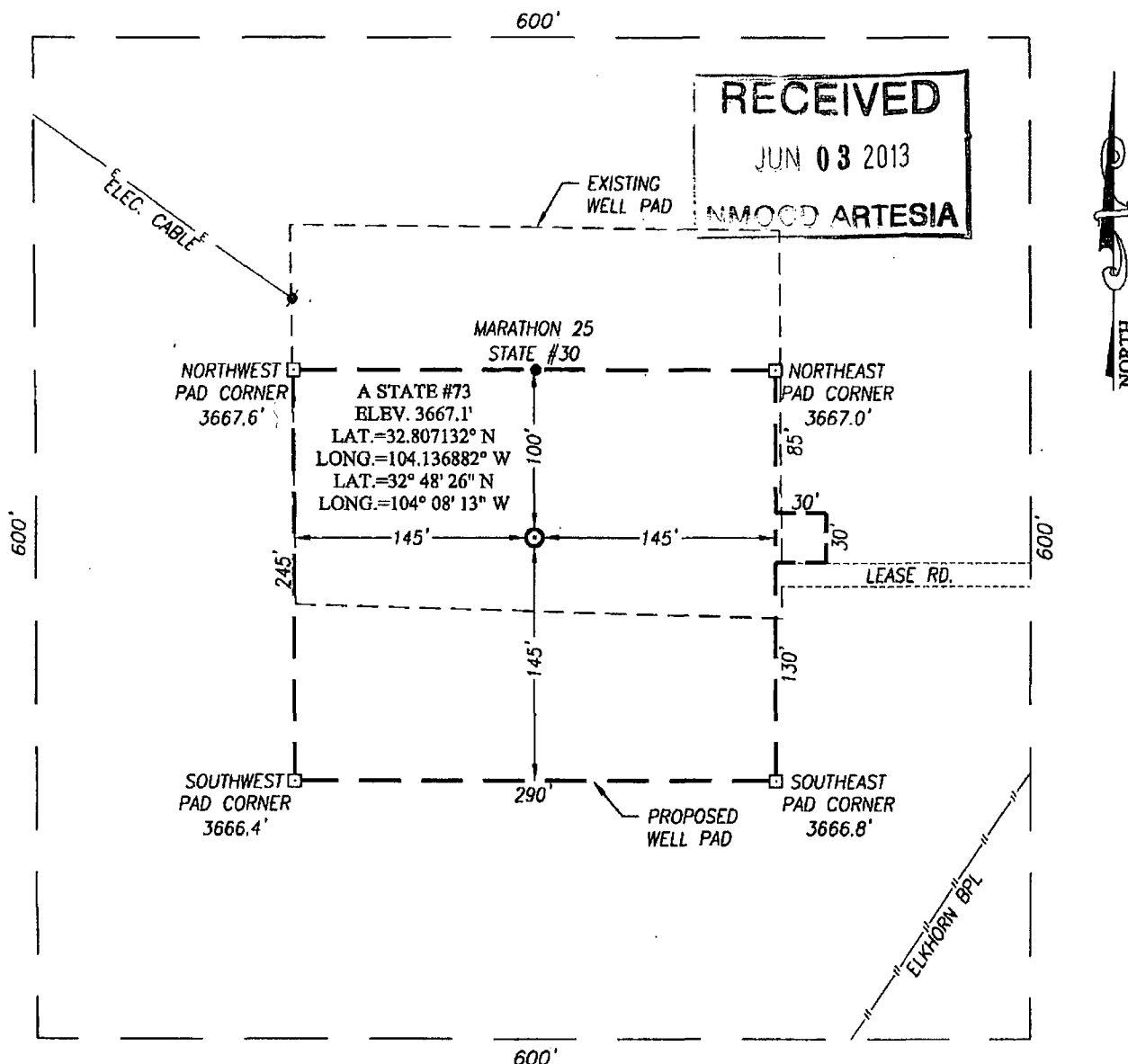
I hereby certify that the well location shown on this plat was plotted from field notes of actual surveys made by me or under my supervision, and that the same is true and correct to the best of my belief.

JANUARY 18, 2013

Date of Survey
Signature & Seal of Professional Surveyor:

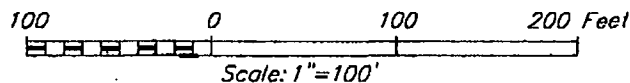
GARY G. EIDSON
NEW MEXICO
12041
Gary Eidson 1/18/13
Certificate Number **Gary G. Eidson 12641**
Ronald J. Eidson 3239
AF WSC W.O.: 13.11.0024

SECTION 25, TOWNSHIP 17 SOUTH, RANGE 28 EAST, N.M.P.M.
EDDY COUNTY **NEW MEXICO**



DIRECTIONS TO LOCATION

FROM THE INTERSECTION OF U.S. HWY. #82 AND CO. RD. #209 (TURKEY TRACT) GO EAST ALONG U.S. HWY. #82 APPROX. 1.1 MILES. TURN LEFT AND GO NORTH APPROX. 0.2 MILES. TURN LEFT AND GO WEST APPROX. 0.4 MILES TO THIS LOCATION.



APACHE CORPORATION

A STATE #73 WELL
LOCATED 2410 FEET FROM THE NORTH LINE
AND 330 FEET FROM THE WEST LINE OF SECTION 25,
TOWNSHIP 17 SOUTH, RANGE 28 EAST, N.M.P.M.,
EDDY COUNTY, NEW MEXICO

PROVIDING SURVEYING SERVICES
 SINCE 1946
JOHN WEST SURVEYING COMPANY
 412 N. DAL PASO
 HOBBS, N.M. 88240
 (575) 393-3117 www.jwsc.biz

Survey Date: 1/18/13	CAD Date: 1/23/13	Drawn By: AF
W.O. No.: 13110024	Rev: .	Rel. W.O.: Sheet 1 of 1