

DISTRICT I
1625 N. French Dr., Hobbs, NM 88240
Phone (575) 393-0161 Fax: (575) 393-0720

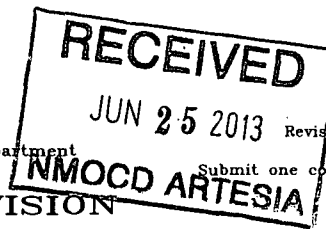
DISTRICT II
811 S. First St., Artesia, NM 88210
Phone (575) 748-1283 Fax: (575) 748-9720

DISTRICT III
1000 Rio Brazos Rd., Aztec, NM 87410
Phone (505) 334-6178 Fax: (505) 334-6170

DISTRICT IV
1220 S. St. Francis Dr., Santa Fe, NM 87505
Phone (505) 476-3460 Fax: (505) 476-3462

State of New Mexico
Energy, Minerals and Natural Resources Department

OIL CONSERVATION DIVISION
1220 South St. Francis Dr.
Santa Fe, New Mexico 87505



Form C-102
Revised August 1, 2011

WELL LOCATION AND ACREAGE DEDICATION PLAT

☐ AMENDED REPORT

API Number 30-015-40925	Pool Code 51120	Pool Name Red Lake Gloria Yaso
Property Code 39615	Property Name PETERSON 7 IL FEDERAL COM	Well Number 1H
OGRID No. 14744	Operator Name MEWBOURNE OIL COMPANY	Elevation 3381'

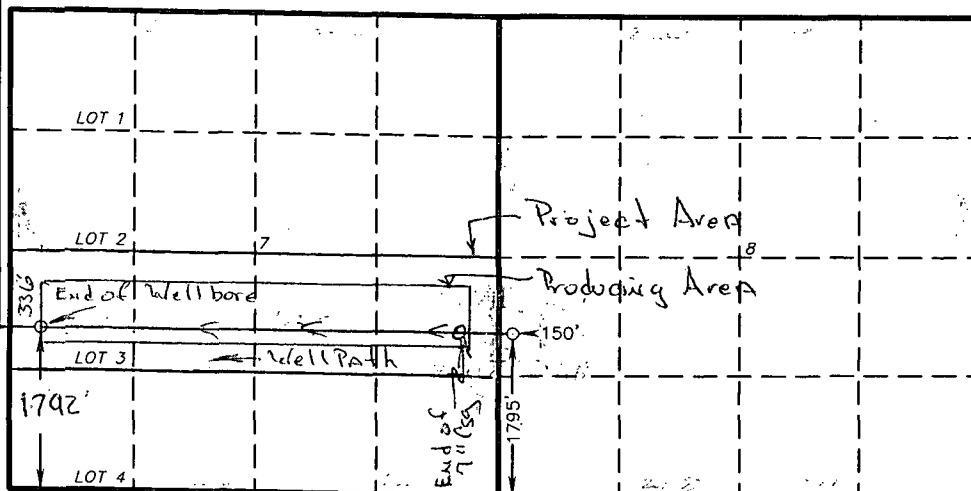
Surface Location

UL or lot No.	Section	Township	Range	Lot Idn	Feet from the	North/South line	Feet from the	East/West line	County
L	8	18 S	27 E		1795	SOUTH	150	WEST	EDDY

Bottom Hole Location If Different From Surface

UL or lot No.	Section	Township	Range	Lot Idn	Feet from the	North/South line	Feet from the	East/West line	County
LOT 3	7	18 S	27 E		1792	SOUTH	336	WEST	EDDY
Dedicated Acres 160	Joint or Infill	Consolidation Code	Order No.						

NO ALLOWABLE WILL BE ASSIGNED TO THIS COMPLETION UNTIL ALL INTERESTS HAVE BEEN CONSOLIDATED
OR A NON-STANDARD UNIT HAS BEEN APPROVED BY THE DIVISION



SURFACE LOCATION
Lot - N 32°45'35.52"
Long - W 104°18'29.32"
NMSPCE- N 640151.350
E 507742.983
(NAD-27)

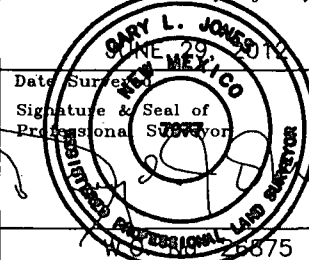
OPERATOR CERTIFICATION

I hereby certify that the information contained herein is true and complete to the best of my knowledge and belief, and that this organization either owns a working interest or unleased mineral interest in the land including the proposed bottom hole location or has a right to drill this well at this location pursuant to a contract with an owner of such a mineral or working interest, or to a voluntary pooling agreement or a compulsory pooling order heretofore entered by the division.

Signature *N.M. Young* Date 4/27/13
Printed Name N.M. Young
Email Address _____

SURVEYOR CERTIFICATION

I hereby certify that the well location shown on this plat was plotted from field notes of actual surveys made by me or under my supervision and that the same is true and correct to the best of my belief.



Certificate No. Gary L. Jones 7977

BASIN SURVEYS 26875