

District I
1625 N. French Dr., Hobbs, NM 88240
District II
1301 W. Grand Avenue, Artesia, NM 88210
District III
1000 Rio Brazos Rd., Aztec, NM 87410
District IV
1220 S. St. Francis Dr., Santa Fe, NM 87505

State of New Mexico
Energy, Minerals & Natural Resources Department
OIL CONSERVATION DIVISION
1220 South St. Francis Dr.
Santa Fe, NM 87505

RECEIVED

JUN 27 2013

Form C-102

Revised October 12, 2005

Submit to Appropriate District Office

State Lease- 4 Copies

Fee Lease- 3 Copies

☒ AMENDED REPORT
As-Drilled

WELL LOCATION AND ACREAGE DEDICATION PLAT

API Number 30-015-39430	Pool Code 11570	Pool Name Cedar Canyon Bone Springs
Property Code	Property Name CYPRESS "34" FEDERAL	Well Number 8H
OGRID No. 16696	Operator Name OXY USA INC.	Elevation 3041.3'

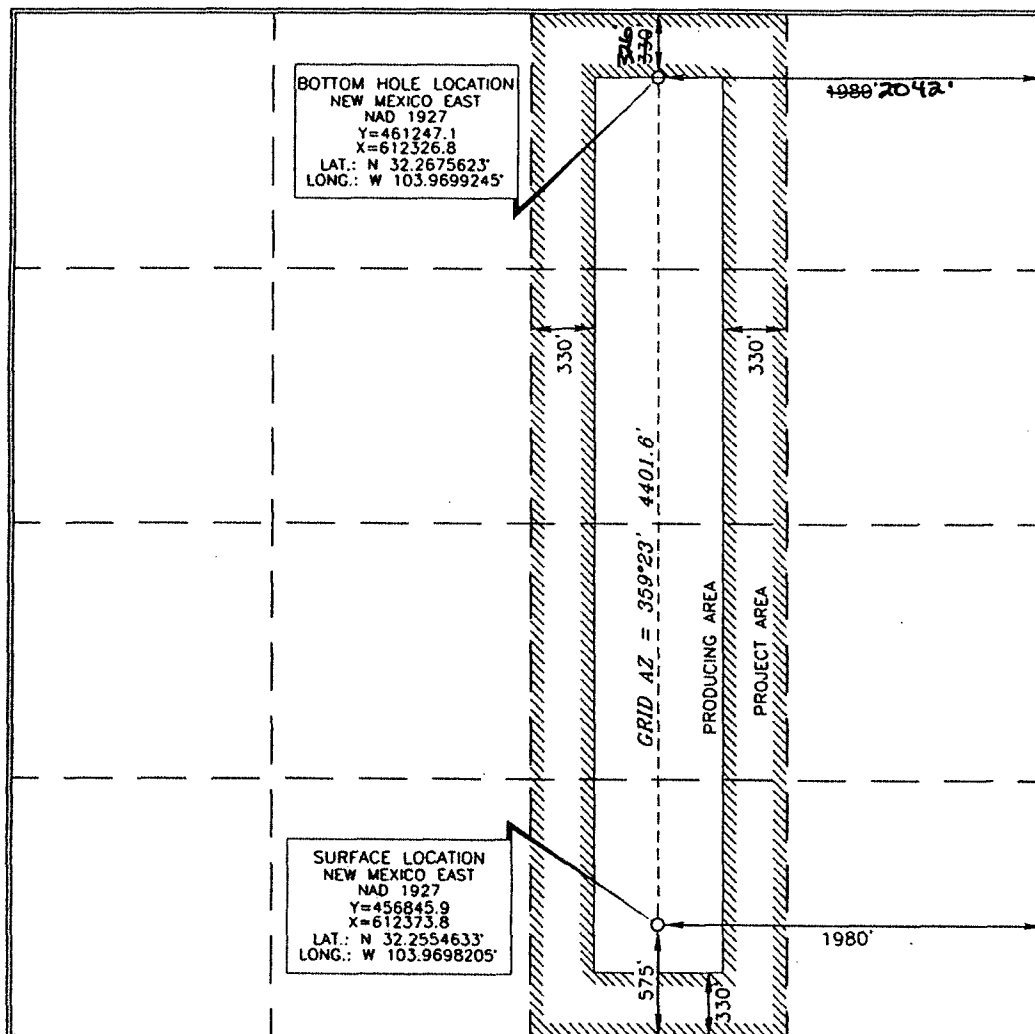
Surface Location

UL or lot no.	Section	Township	Range	Lot Idn	Feet from the	North/South line	Feet from the	East/West line	County
0	34	23 SOUTH	29 EAST, N.M.P.M.		575'	SOUTH	1980'	EAST	EDDY

Bottom Hole Location If Different From Surface

UL or lot no.	Section	Township	Range	Lot Idn	Feet from the	North/South line	Feet from the	East/West line	County
B	34	23 SOUTH	29 EAST, N.M.P.M.		330' 326'	NORTH	1980' 2042'	EAST	EDDY
Dedicated Acres 160	Joint or Infill N	Consolidation Code	Order No. PB - 440 FNL 2039 FEL LB) Top Perf - 995 FNL 1986 FEL (B)						

No allowable will be assigned to this completion until all interests have been consolidated or a non-standard unit has been approved by the division.



OPERATOR CERTIFICATION

I hereby certify that the information contained herein is true and complete to the best of my knowledge and belief, and that this organization either owns a working interest or unleased mineral interest in the land including the proposed bottom hole location or has a right to drill this well at this location pursuant to a contract with an owner of such a mineral or working interest, or to a voluntary pooling agreement or a compulsory pooling order heretofore entered by the division.

Signature

Date

David Stewart Sr. Pres. ADO.
Printed Name

SURVEYOR CERTIFICATION

I hereby certify that the well location shown on this plat was plotted from field notes of actual surveys made by me or under my supervision, and that the same is true and correct to the best of my belief.

15079
JANUARY 6, 2011
Date of Survey

Signature and Seal of Professional Surveyor

2/27/2011
Certificate Number **15079**