

DISTRICT I
1825 N. French Dr., Hobbs, NM 88240
Phone (505) 393-6181 Fax: (505) 393-0720

DISTRICT II
811 S. First St., Artesia, NM 88210
Phone (505) 748-1283 Fax: (505) 748-9720

DISTRICT III
1000 Rio Brazos Rd., Aztec, NM 87410
Phone (505) 334-6178 Fax: (505) 334-6170

DISTRICT IV
1220 S. St. Francis Dr., Santa Fe, NM 87505
Phone (505) 476-3460 Fax: (505) 476-3462

State of New Mexico
Energy, Minerals and Natural Resources Department

Form C-102
Revised August 1, 2011

Submit one copy to appropriate
District Office

OIL CONSERVATION DIVISION

1220 South St. Francis Dr.
Santa Fe, New Mexico 87505

WELL LOCATION AND ACREAGE DEDICATION PLAT

☐ AMENDED REPORT

| | | |
|----------------------------|--|----------------------------------|
| API Number 30-015-A1258 | Pool Code 98016 | Pool Name Wildcat Bone Spring |
| Property Code 39807 | Property Name VOYAGER 11 EH FEDERAL COM | Well Number 1H |
| GRID No. 14744 | Operator Name MEWBOURNE OIL COMPANY | Elevation 3349' |

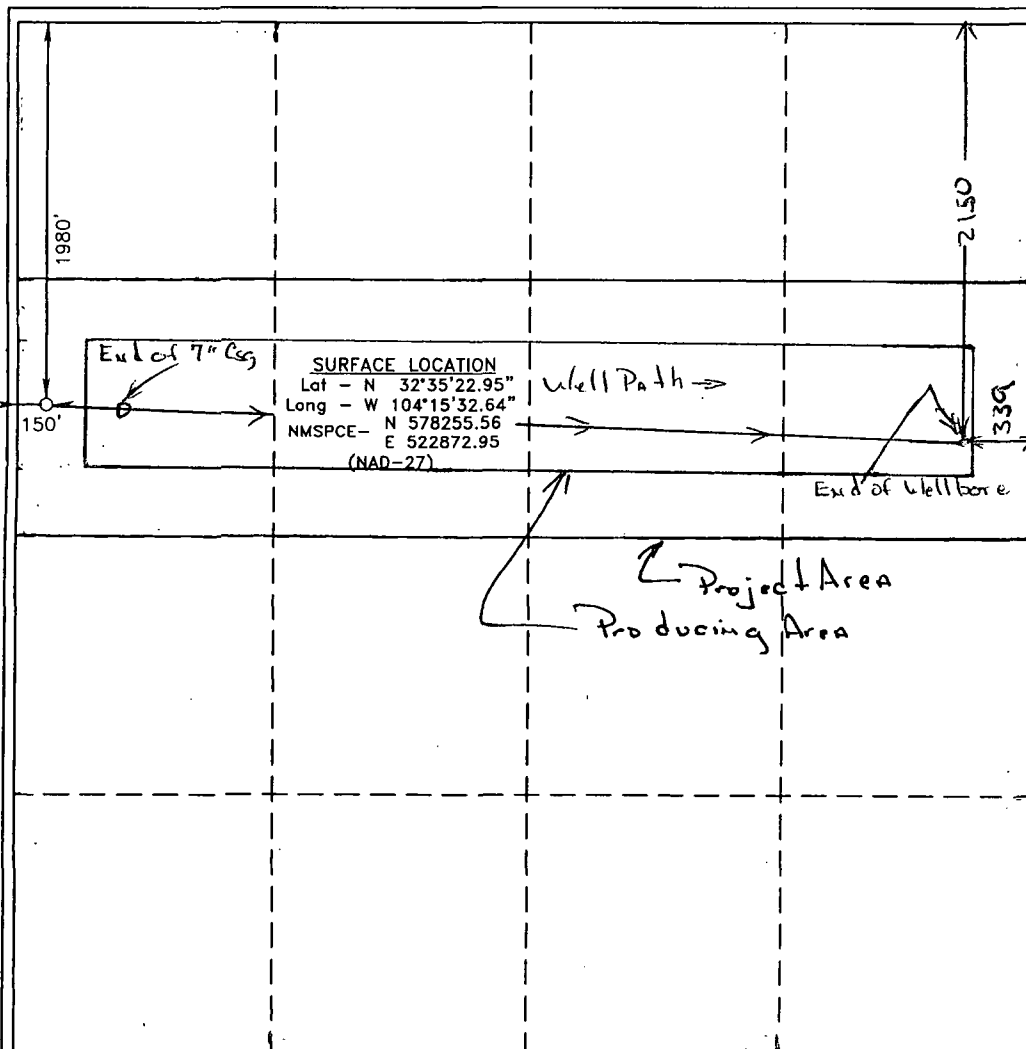
Surface Location

| | | | | | | | | | |
|--------------------|---------------|------------------|---------------|---------|-----------------------|---------------------------|----------------------|------------------------|----------------|
| UL or lot No. E | Section 11 | Township 20 S | Range 27 E | Lot Idn | Feet from the 1980 | North/South line NORTH | Feet from the 150 | East/West line WEST | County EDDY |
|--------------------|---------------|------------------|---------------|---------|-----------------------|---------------------------|----------------------|------------------------|----------------|

Bottom Hole Location If Different From Surface

| | | | | | | | | | |
|------------------------|-----------------|--------------------|--------------|---------|-----------------------|---------------------------|----------------------|------------------------|----------------|
| UL or lot No. H | Section 11 | Township 20S | Range 27E | Lot Idn | Feet from the 2150 | North/South line North | Feet from the 339 | East/West line East | County Eddy |
| Dedicated Acres 160 | Joint or Infill | Consolidation Code | Order No. | | | | | | |

NO ALLOWABLE WILL BE ASSIGNED TO THIS COMPLETION UNTIL ALL INTERESTS HAVE BEEN CONSOLIDATED
OR A NON-STANDARD UNIT HAS BEEN APPROVED BY THE DIVISION



OPERATOR CERTIFICATION

I hereby certify that the information contained herein is true and complete to the best of my knowledge and belief, and that this organization either owns a working interest or unleased mineral interest in the land including the proposed bottom hole location or has a right to drill this well at this location pursuant to a contract with an owner of such a mineral or working interest, or to a voluntary pooling agreement or a compulsory pooling order heretofore entered by the division.

Signature: *N.M. Young* Date: 6/8/13

Printed Name: N.M. Young

Email Address:

SURVEYOR CERTIFICATION

I hereby certify that the well location shown on this plat was plotted from field notes of actual surveys made by me or under my supervision, and that the same is true and correct to the best of my belief.

SEPTEMBER 10, 2012

Date Surveyed

Signature: *Gary L. Jones*
Professional Surveyor

No. 7977

Certificate No. Gary L. Jones 7977

Basin Surveys 27294