

District I

1625 N. French Dr., Hobbs, NM 88240

District II

1301 W. Grand Avenue, Aztec, NM 88210

District III

1000 Rio Brazos Rd., Aztec, NM 87410

District IV

1220 S. St. Francis Dr., Santa Fe, NM 87505

RECEIVED

MAY 17 2013

AMOC D ARTESIA

State of New Mexico

Energy, Minerals & Natural Resources Department

OIL CONSERVATION DIVISION

1220 South St. Francis Dr.

Santa Fe, NM 87505

Form C-102

Revised October 15, 2009

Submit one copy to appropriate

District Office

☐ AMENDED REPORT

WELL LOCATION AND ACREAGE DEDICATION PLAT

¹ API Number 30-015-40583	² Pool Code 49622	³ Pool Name Parkway; Bone Spring
⁴ Property Code 38434	⁵ Property Name TURQUOISE PWU "27"	⁶ Well Number 5H
⁷ OGRID No. 6137	⁸ Operator Name DEVON ENERGY PRODUCTION COMPANY, L.P.	⁹ Elevation 3337.5

¹⁰ Surface Location

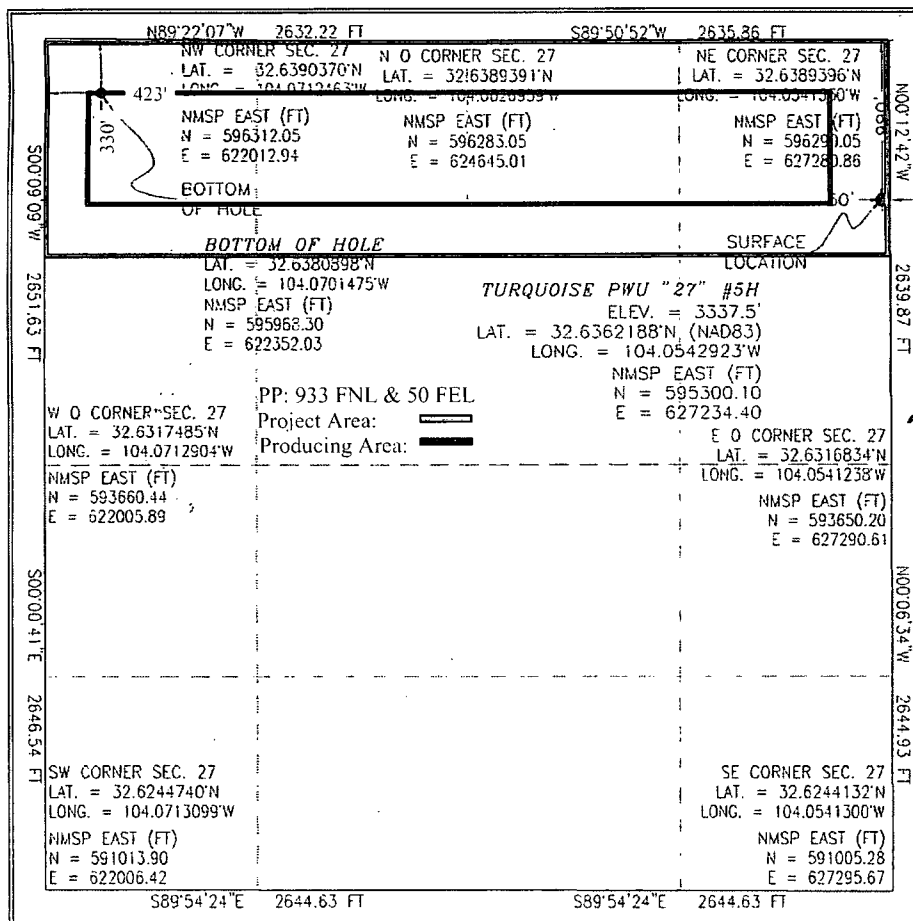
UL or lot no.	Section	Township	Range	Lot Idn	Feet from the	North/South line	Feet from the	East/West line	County
A	27	19 S	29 E		990	NORTH	50	EAST	EDDY

¹¹ Bottom Hole Location If Different From Surface

UL or lot no.	Section	Township	Range	Lot Idn	Feet from the	North/South line	Feet from the	East/West line	County
D	27	19 S	29 E		330	NORTH	423	WEST	EDDY

¹² Dedicated Acres 160	¹³ Joint or Infill	¹⁴ Consolidation Code	¹⁵ Order No.
--------------------------------------	-------------------------------	----------------------------------	-------------------------

No allowable will be assigned to this completion until all interests have been consolidated or a non-standard unit has been approved by the division.

¹⁷ OPERATOR CERTIFICATION

I hereby certify that the information contained herein is true and complete to the best of my knowledge and belief, and that this organization either owns a working interest or unleased mineral interest in the land including the proposed bottom hole location or has a right to drill this well at this location pursuant to a contract with an owner of such a mineral or working interest, or to a voluntary pooling agreement or a compulsory pooling order heretofore entered by the division.

Signature

7/8/13
Date

Printed Name

Ryan Delong, Regulatory Specialist

¹⁸ SURVEYOR CERTIFICATION

I hereby certify that the well location shown on this plat was plotted from field notes of actual surveys made by me or under my supervision, and that the same is true and correct to the best of my belief.

MAY 1 2012

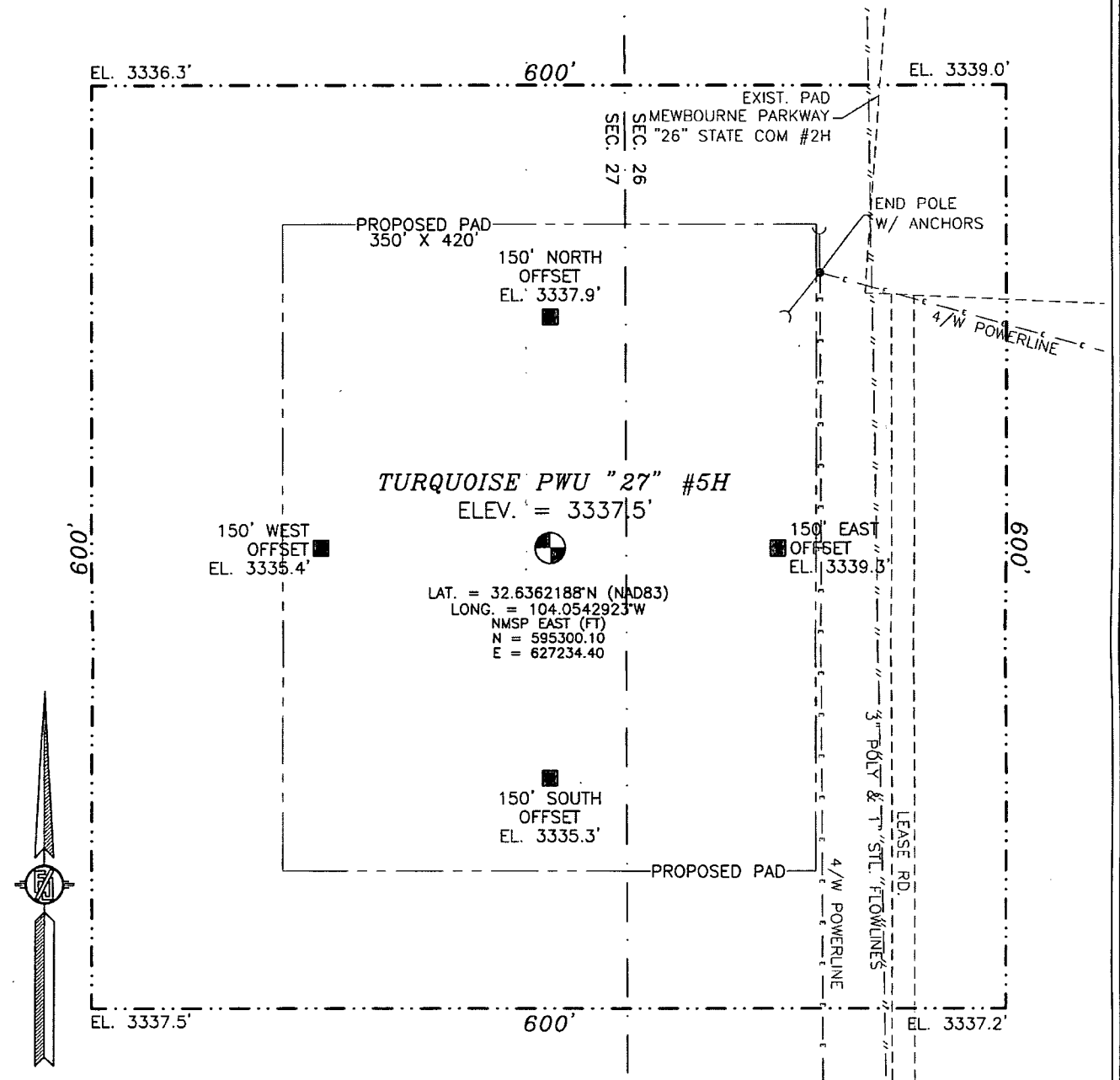
Date of Survey

Signature and Seal of the Registered Surveyor:

Certificate Number: FILIMON F. JARAMILLO, PLS 12797

SURVEY NO. 964R

SECTION 27, TOWNSHIP 19 SOUTH, RANGE 29 EAST, N.M.P.M.
EDDY COUNTY, STATE OF NEW MEXICO



010 50 100 200

SCALE 1" = 100'

DIRECTIONS TO LOCATION

FROM THE INTERSECTION OF CR 210 (OLD LOCO) AND CR 235 (CURRY COMB) GO SOUTHEAST ON CR 235 FOR APPROX. 2.6 MILES. GO SOUTH APPROX. 0.4 OF A MILE. GO NORTHWEST APPROX. 0.7 OF A MILE TO MEWBOURNE PARKWAY "26" STATE COM #2H. LOCATION IS APPROX. 500 FT SOUTHWEST.

DEVON ENERGY PRODUCTION COMPANY, L.P.

TURQUOISE PWU "27" #5H

LOCATED 990 FT. FROM THE NORTH LINE
AND 50 FT. FROM THE EAST LINE OF
SECTION 27, TOWNSHIP 19 SOUTH,
RANGE 29 EAST, N.M.P.M.
EDDY COUNTY, STATE OF NEW MEXICO

MAY 4, 2012

SURVEY NO. 964R

MADRON SURVEYING, INC. 301 SOUTH CANAL CARLSBAD, NEW MEXICO
(575) 234-3341

This is a topographic map of the Turquoise PWU area, showing contour lines, elevation points, and a grid. The map is labeled "TURQUOISE PWU #27" #5H". It includes a north arrow and a scale bar.

The map shows a grid with horizontal and vertical lines. Elevation points are marked with numbers and letters, such as 3335T, 3344T, 3329T, 3346T, 3354T, 3352T, 3337T, 3355T, 3338T, 3339T, 3338T, 3337T, 3336T, 3335T, 3334T, 3333T, 3332T, 3331T, 3330T, 3329T, 3328T, 3327T, 3326T, 3325T, 3324T, 3323T, 3322T, 3321T, 3320T, 3319T, 3318T, 3317T, 3316T, 3315T, 3314T, 3313T, 3312T, 3311T, 3310T, 3309T, 3308T, 3307T, 3306T, 3305T, 3304T, 3303T, 3302T, 3301T, 3300T, 3299T, 3298T, 3297T, 3296T, 3295T, 3294T, 3293T, 3292T, 3291T, 3290T, 3289T, 3288T, 3287T, 3286T, 3285T, 3284T, 3283T, 3282T, 3281T, 3280T, 3279T, 3278T, 3277T, 3276T, 3275T, 3274T, 3273T, 3272T, 3271T, 3270T, 3269T, 3268T, 3267T, 3266T, 3265T, 3264T, 3263T, 3262T, 3261T, 3260T, 3259T, 3258T, 3257T, 3256T, 3255T, 3254T, 3253T, 3252T, 3251T, 3250T, 3249T, 3248T, 3247T, 3246T, 3245T, 3244T, 3243T, 3242T, 3241T, 3240T, 3239T, 3238T, 3237T, 3236T, 3235T, 3234T, 3233T, 3232T, 3231T, 3230T, 3229T, 3228T, 3227T, 3226T, 3225T, 3224T, 3223T, 3222T, 3221T, 3220T, 3219T, 3218T, 3217T, 3216T, 3215T, 3214T, 3213T, 3212T, 3211T, 3210T, 3209T, 3208T, 3207T, 3206T, 3205T, 3204T, 3203T, 3202T, 3201T, 3200T, 3199T, 3198T, 3197T, 3196T, 3195T, 3194T, 3193T, 3192T, 3191T, 3190T, 3189T, 3188T, 3187T, 3186T, 3185T, 3184T, 3183T, 3182T, 3181T, 3180T, 3179T, 3178T, 3177T, 3176T, 3175T, 3174T, 3173T, 3172T, 3171T, 3170T, 3169T, 3168T, 3167T, 3166T, 3165T, 3164T, 3163T, 3162T, 3161T, 3160T, 3159T, 3158T, 3157T, 3156T, 3155T, 3154T, 3153T, 3152T, 3151T, 3150T, 3149T, 3148T, 3147T, 3146T, 3145T, 3144T, 3143T, 3142T, 3141T, 3140T, 3139T, 3138T, 3137T, 3136T, 3135T, 3134T, 3133T, 3132T, 3131T, 3130T, 3129T, 3128T, 3127T, 3126T, 3125T, 3124T, 3123T, 3122T, 3121T, 3120T, 3119T, 3118T, 3117T, 3116T, 3115T, 3114T, 3113T, 3112T, 3111T, 3110T, 3109T, 3108T, 3107T, 3106T, 3105T, 3104T, 3103T, 3102T, 3101T, 3100T, 3099T, 3098T, 3097T, 3096T, 3095T, 3094T, 3093T, 3092T, 3091T, 3090T, 3089T, 3088T, 3087T, 3086T, 3085T, 3084T, 3083T, 3082T, 3081T, 3080T, 3079T, 3078T, 3077T, 3076T, 3075T, 3074T, 3073T, 3072T, 3071T, 3070T, 3069T, 3068T, 3067T, 3066T, 3065T, 3064T, 3063T, 3062T, 3061T, 3060T, 3059T, 3058T, 3057T, 3056T, 3055T, 3054T, 3053T, 3052T, 3051T, 3050T, 3049T, 3048T, 3047T, 3046T, 3045T, 3044T, 3043T, 3042T, 3041T, 3040T, 3039T, 3038T, 3037T, 3036T, 3035T, 3034T, 3033T, 3032T, 3031T, 3030T, 3029T, 3028T, 3027T, 3026T, 3025T, 3024T, 3023T, 3022T, 3021T, 3020T, 3019T, 3018T, 3017T, 3016T, 3015T, 3014T, 3013T, 3012T, 3011T, 3010T, 3009T, 3008T, 3007T, 3006T, 3005T, 3004T, 3003T, 3002T, 3001T, 3000T, 2999T, 2998T, 2997T, 2996T, 2995T, 2994T, 2993T, 2992T, 2991T, 2990T, 2989T, 2988T, 2987T, 2986T, 2985T, 2984T, 2983T, 2982T, 2981T, 2980T, 2979T, 2978T, 2977T, 2976T, 2975T, 2974T, 2973T, 2972T, 2971T, 2970T, 2969T, 2968T, 2967T, 2966T, 2965T, 2964T, 2963T, 2962T, 2961T, 2960T, 2959T, 2958T, 2957T, 2956T, 2955T, 2954T, 2953T, 2952T, 2951T, 2950T, 2949T, 2948T, 2947T, 2946T, 2945T, 2944T, 2943T, 2942T, 2941T, 2940T, 2939T, 2938T, 2937T, 2936T, 2935T, 2934T, 2933T, 2932T, 2931T, 2930T, 2929T, 2928T, 2927T, 2926T, 2925T, 2924T, 2923T, 2922T, 2921T, 2920T, 2919T, 2918T, 2917T, 2916T, 2915T, 2914T, 2913T, 2912T, 2911T, 2910T, 2909T, 2908T, 2907T, 2906T, 2905T, 2904T, 2903T, 2902T, 2901T, 2900T, 2899T, 2898T, 2897T, 2896T, 2895T, 2894T, 2893T, 2892T, 2891T, 2890T, 2889T, 2888T, 2887T, 2886T, 2885T, 2884T, 2883T, 2882T, 2881T, 2880T, 2879T, 2878T, 2877T, 2876T, 2875T, 2874T, 2873T, 2872T, 2871T, 2870T, 2869T, 2868T, 2867T, 2866T, 2865T, 2864T, 2863T, 2862T, 2861T, 2860T, 2859T, 2858T, 2857T, 2856T, 2855T, 2854T, 2853T, 2852T, 2851T, 2850T, 2849T, 2848T, 2847T, 2846T, 2845T, 2844T, 2843T, 2842T, 2841T, 2840T, 2839T, 2838T, 2837T, 2836T, 2835T, 2834T, 2833T, 2832T, 2831T, 2830T, 2829T, 2828T, 2827T, 2826T, 2825T, 2824T, 2823T, 2822T, 2821T, 2820T, 2819T, 2818T, 2817T, 2816T, 2815T, 2814T, 2813T, 2812T, 2811T, 2810T, 2809T, 2808T, 2807T, 2806T, 2805T, 2804T, 2803T, 2802T, 2801T, 2800T, 2799T, 2798T, 2797T, 2796T, 2795T, 2794T, 2793T, 2792T, 2791T, 2790T, 2789T, 2788T, 2787T, 2786T, 2785T, 2784T, 27

NOT TO SCALE

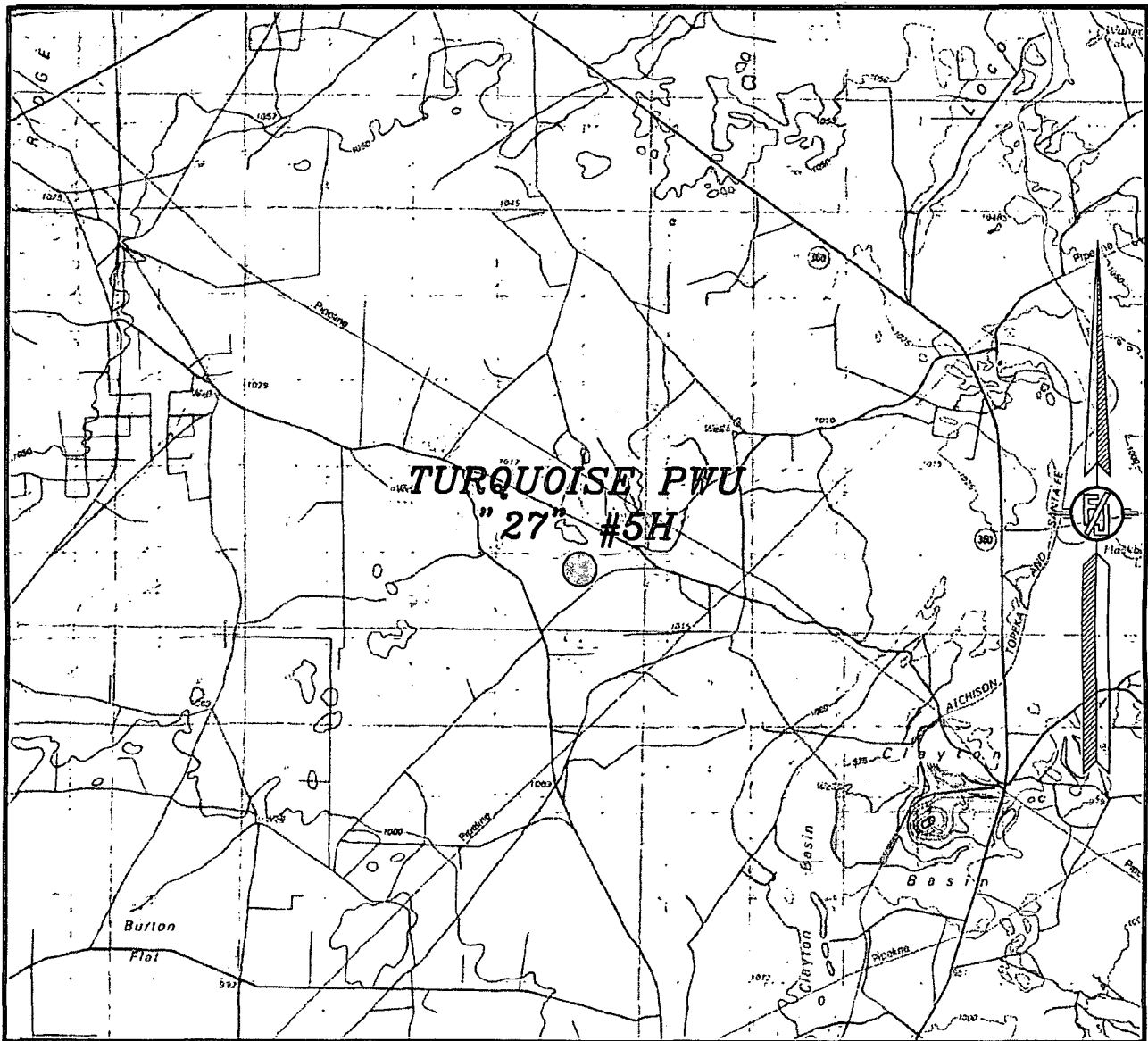
LOCATED 990 FT. FROM THE NORTH LINE
AND 50 FT. FROM THE EAST LINE OF
SECTION 27, TOWNSHIP 19 SOUTH,
RANGE 29 EAST, N.M.P.M.
EDDY COUNTY, STATE OF NEW MEXICO

SURVEY NO. 964R

MADRON SURVEYING, INC. 301 SOUTH CANAL CARLSBAD, NEW MEXICO
(575) 234-3341

301 SOUTH CANAL
(575) 234-3341

SECTION 27, TOWNSHIP 19 SOUTH, RANGE 29 EAST, N.M.P.M.
EDDY COUNTY, STATE OF NEW MEXICO
VICINITY MAP



NOT TO SCALE

DEVON ENERGY PRODUCTION COMPANY, L.P.

TURQUOISE PWU "27" #5H

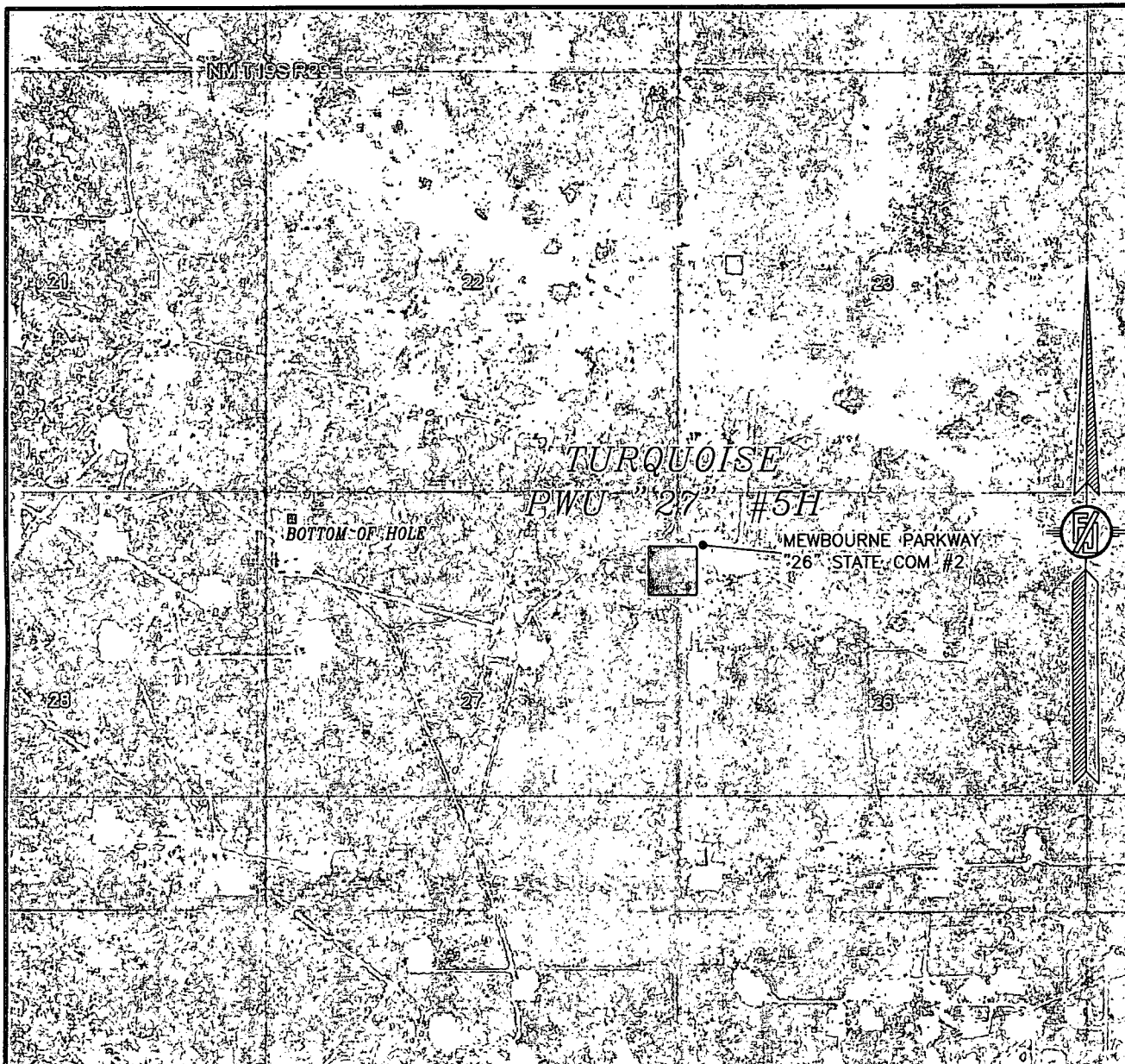
LOCATED 990 FT. FROM THE NORTH LINE
AND 50 FT. FROM THE EAST LINE OF
SECTION 27, TOWNSHIP 19 SOUTH,
RANGE 29 EAST, N.M.P.M.
EDDY COUNTY, STATE OF NEW MEXICO

MAY 4, 2012

SURVEY NO. 964R

MADRON SURVEYING, INC. 301 SOUTH CANAL CARLSBAD, NEW MEXICO
(575) 234-3341

SECTION 27, TOWNSHIP 19 SOUTH, RANGE 29 EAST, N.M.P.M.
EDDY COUNTY, STATE OF NEW MEXICO
AERIAL PHOTO



NOT TO SCALE
AERIAL PHOTO:
GOOGLE EARTH
JUNE, 2011

DEVON ENERGY PRODUCTION COMPANY, L.P.

TURQUOISE PWU "27" #5H

LOCATED 990 FT. FROM THE NORTH LINE
AND 50 FT. FROM THE EAST LINE OF
SECTION 27, TOWNSHIP 19 SOUTH,
RANGE 29 EAST, N.M.P.M.
EDDY COUNTY, STATE OF NEW MEXICO

MAY 4, 2012

SURVEY NO. 964R

MADRON SURVEYING, INC. 301 SOUTH CANAL (575) 234-3341 CARLSBAD, NEW MEXICO