

District I  
1625 N. French Dr., Hobbs, NM 88240  
Phone: (575) 393-6161 Fax: (575) 393-0120  
District II  
811 S. First St., Artesia, NM 88210  
Phone: (575) 748-1283 Fax: (575) 748-9720  
District III  
1000 Rio Brazos Road, Aztec, NM 87410  
Phone: (505) 334-6178 Fax: (505) 334-6170  
District IV  
1220 S. St. Francis Dr., Santa Fe, NM 87505  
Phone: (505) 476-3460 Fax: (505) 476-3462

State of New Mexico

Energy, Minerals & Natural Resources Department

OIL CONSERVATION DIVISION

1220 South St. Francis Dr.

Santa Fe, NM 87505

Form C-102

Revised August 1, 2011

Submit one copy to appropriate

District Office

☐ AMENDED REPORT

### WELL LOCATION AND ACREAGE DEDICATION PLAT

<sup>1</sup> API Number <b>30-015-41534</b>	<sup>2</sup> Pool Code <b>96641</b>	<sup>3</sup> Pool Name <b>Paduca; Bone Spring (O)</b>
<sup>4</sup> Property Code <b>300635</b>	<sup>5</sup> Property Name <b>COTTON DRAW UNIT</b>	<sup>6</sup> Well Number <b>215H</b>
<sup>7</sup> OGRID No. <b>6137</b>	<sup>8</sup> Operator Name <b>DEVON ENERGY PRODUCTION COMPANY, L.P.</b>	<sup>9</sup> Elevation <b>3507.5</b>

#### <sup>10</sup> Surface Location

UL or lot no.	Section	Township	Range	Lot Idn	Feet from the	North/South line	Feet from the	East/West line	County
<b>C</b>	<b>36</b>	<b>24 S</b>	<b>31 E</b>		<b>200</b>	<b>NORTH</b>	<b>1760</b>	<b>WEST</b>	<b>EDDY</b>

#### <sup>11</sup> Bottom Hole Location If Different From Surface

UL or lot no.	Section	Township	Range	Lot Idn	Feet from the	North/South line	Feet from the	East/West line	County
<b>N</b>	<b>36</b>	<b>24 S</b>	<b>31 E</b>		<b>330</b>	<b>SOUTH</b>	<b>1980</b>	<b>WEST</b>	<b>EDDY</b>

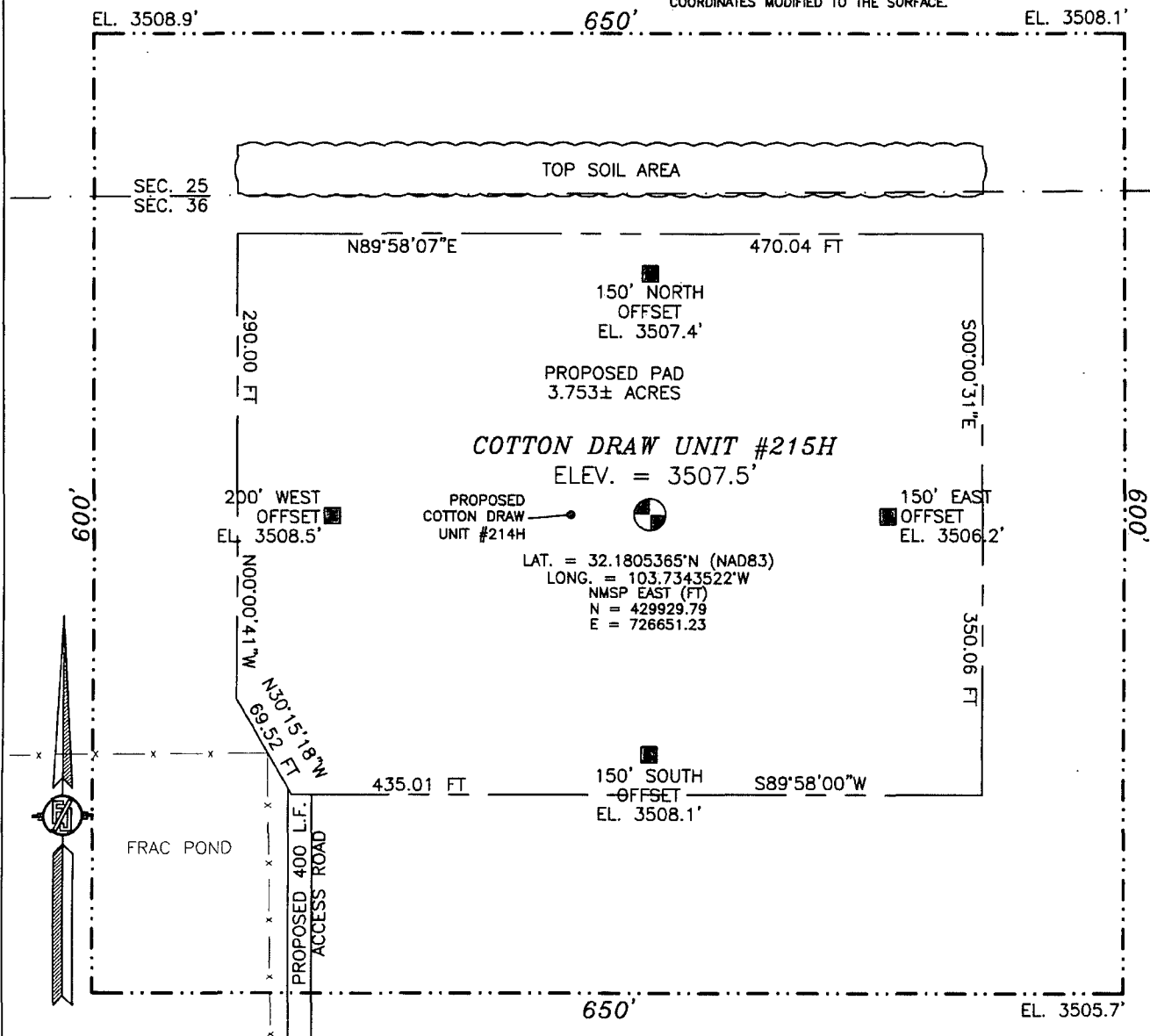
<sup>12</sup> Dedicated Acres <b>160</b>	<sup>13</sup> Joint or Infill	<sup>14</sup> Consolidation Code	<sup>15</sup> Order No.
---	-------------------------------	----------------------------------	-------------------------

No allowable will be assigned to this completion until all interests have been consolidated or a non-standard unit has been approved by the division.

		<h4><sup>17</sup> OPERATOR CERTIFICATION</h4> <p>I hereby certify that the information contained herein is true and complete to the best of my knowledge and belief, and that this organization either owns a working interest or unleased mineral interest in the land including the proposed bottom hole location or has a right to drill this well at this location pursuant to a contract with an owner of such a mineral or working interest, or to a voluntary pooling agreement or a compulsory pooling order having been entered in the division.</p> <p>Signature:  Date: <b>7/10/13</b></p> <p>Printed Name: <b>Ryan Delong, Regulatory Specialist</b></p> <p>E-mail Address: <b>Ryan.Delong@dvn.com</b></p>	
<h4><sup>18</sup> SURVEYOR CERTIFICATION</h4> <p>I hereby certify that the well location shown on this plat was plotted from field notes of actual surveys made by me or under my supervision, and that the same is true and correct to the best of my belief.</p> <p>Date of Survey: <b>JUNE 1, 2013</b></p> <p>Signature and Seal of Professional Surveyor:  Certificate Number: <b>PLUMMER P. JARAMILLO, PLS 12797</b></p> <p>SURVEY NO. 1887</p>			

SECTION 36, TOWNSHIP 24 SOUTH, RANGE 31 EAST, N.M.P.M.  
EDDY COUNTY, STATE OF NEW MEXICO  
SITE MAP

NOTE: LATITUDE AND LONGITUDE COORDINATES ARE SHOWN USING THE NORTH AMERICAN DATUM OF 1983 (NAD83). LISTED NEW MEXICO STATE PLANE EAST COORDINATES ARE GRID (NAD83). BASIS OF BEARING AND DISTANCES USED ARE NEW MEXICO STATE PLANE EAST COORDINATES MODIFIED TO THE SURFACE.



010 50 100 200

SCALE 1" = 100'

**DIRECTIONS TO LOCATION**

FROM INTERSECTION OF ORLA HWY #1 & MONSANTO ROAD GO WEST ON MONSANTO ROAD APPROX. 2.1 MILES ROAD TURNS RIGHT (NORTH) GO NORTH APPROX. 0.9 MILES ROAD TURNS LEFT (WEST) GO WEST APPROX. 2.0 MILES ROAD TURNS RIGHT (NORTH) GO NORTH APPROX. 1.8 MILES ROAD TURNS LEFT (WEST) GO WEST APPROX. 0.3 MILES ROAD TURNS RIGHT (NORTH) GO NORTH 0.4 MILES CROSS CATTLE GUARD TURN RIGHT (EAST) GO EAST APPROX. 0.7 MILES ROAD TURNS LEFT (NORTH) GO NORTH APPROX. 0.9 MILES ROAD TURNS LEFT (WEST) GO WEST APPROX. 0.1 MILES EAST SIDE OF FRAC POND A ROAD LATH WITH RED AND WHITE FLAGGING LOCATION IS NORTH OF ROAD 400± FEET.

DEVON ENERGY PRODUCTION COMPANY, L.P.  
COTTON DRAW UNIT #215H  
LOCATED 200 FT. FROM THE NORTH LINE  
AND 1760 FT. FROM THE WEST LINE OF  
SECTION 36, TOWNSHIP 24 SOUTH,  
RANGE 31 EAST, N.M.P.M.  
EDDY COUNTY, STATE OF NEW MEXICO

JUNE 1, 2013

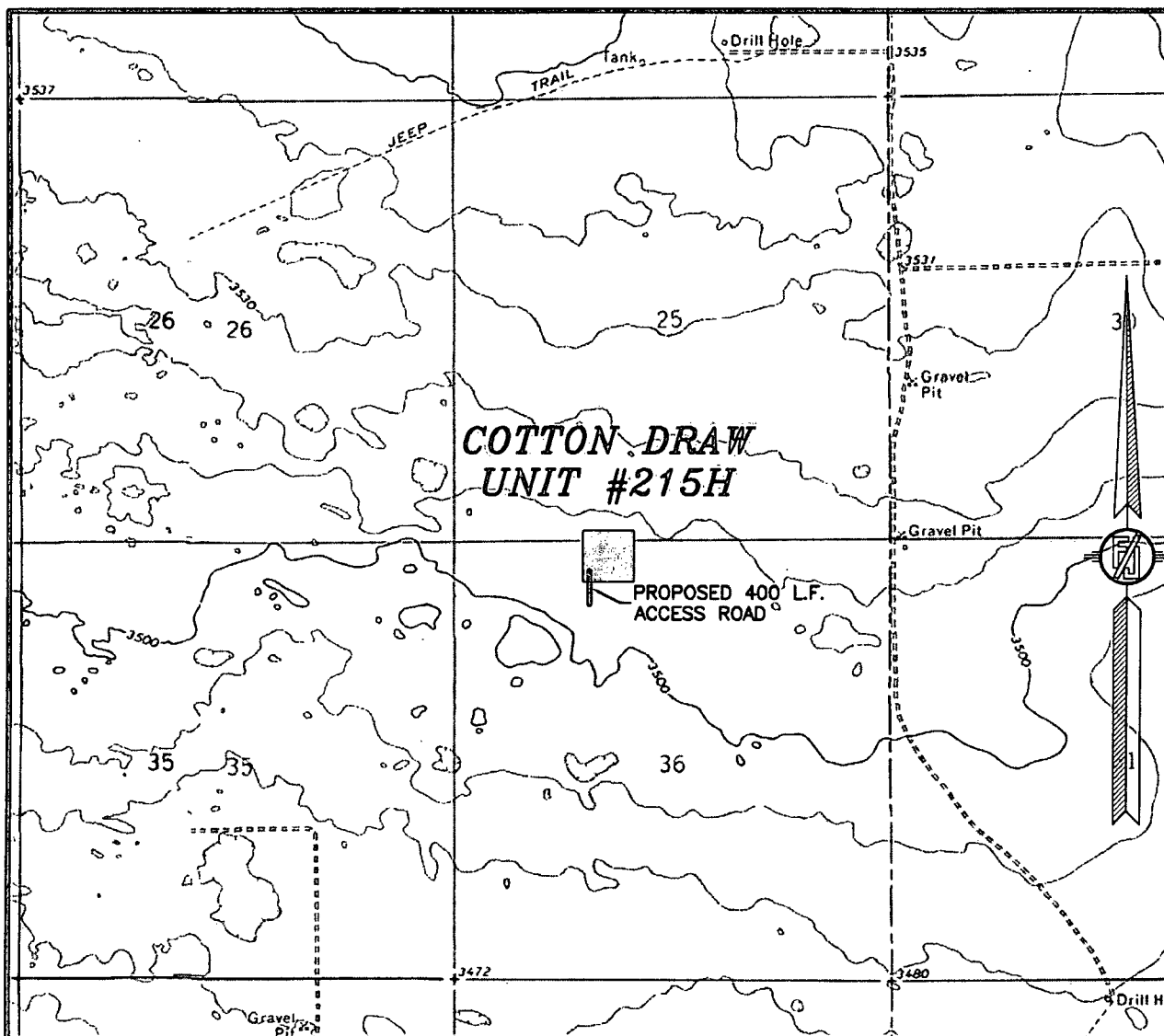
SURVEY NO. 1887

MADRON SURVEYING, INC.

301 SOUTH CANAL  
(575) 234-3341

CARLSBAD, NEW MEXICO

SECTION 36, TOWNSHIP 24 SOUTH, RANGE 31 EAST, N.M.P.M.  
 EDDY COUNTY, STATE OF NEW MEXICO  
 LOCATION VERIFICATION MAP



USGS QUAD MAP:  
 PADUCA BREAKS NW

NOT TO SCALE

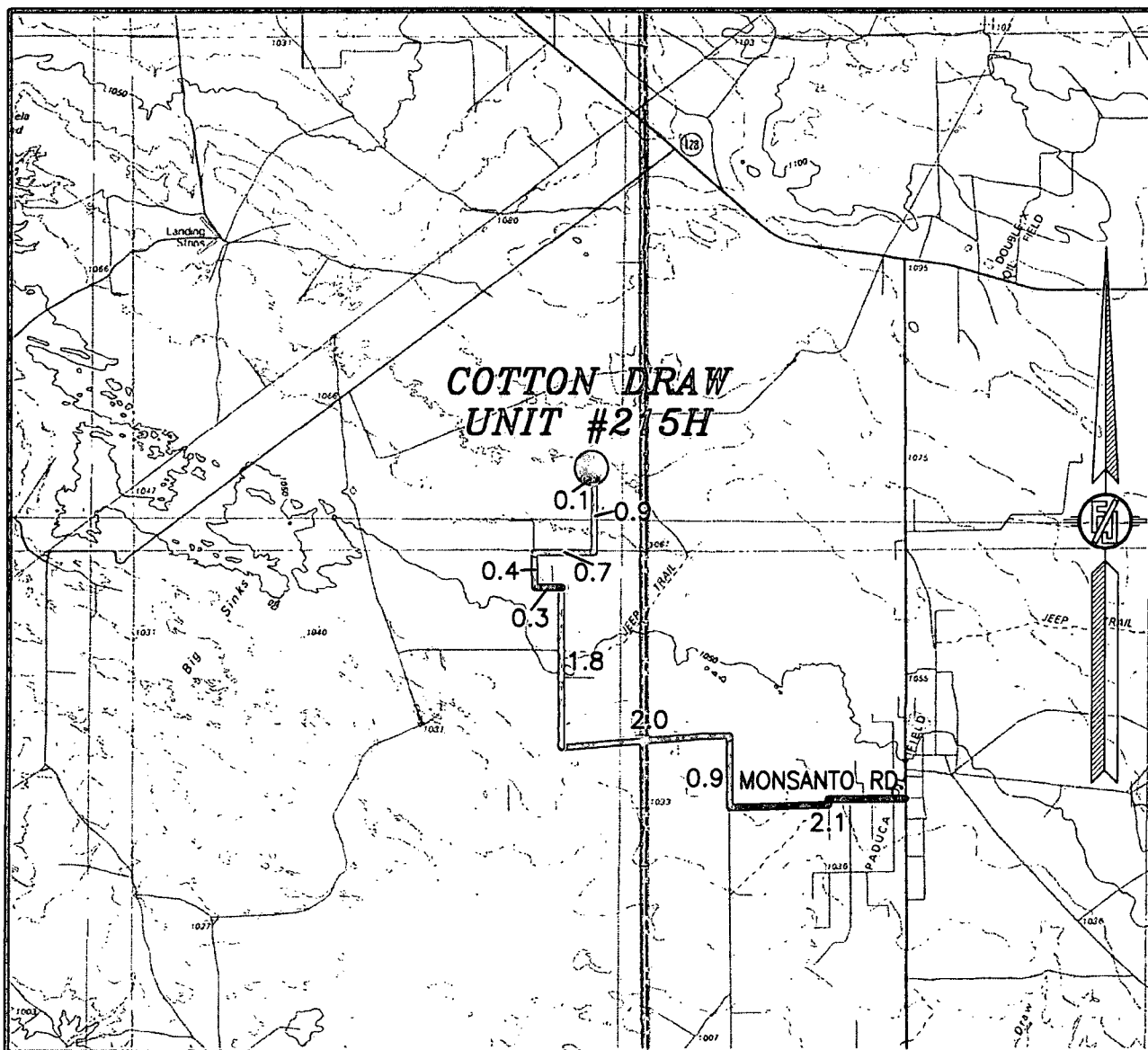
DEVON ENERGY PRODUCTION COMPANY, L.P.  
 COTTON DRAW UNIT #215H  
 LOCATED 200 FT. FROM THE NORTH LINE  
 AND 1760 FT. FROM THE WEST LINE OF  
 SECTION 36, TOWNSHIP 24 SOUTH,  
 RANGE 31 EAST, N.M.P.M.  
 EDDY COUNTY, STATE OF NEW MEXICO

JUNE 1, 2013

SURVEY NO. 1887

MADRON SURVEYING, INC. 301 SOUTH CANAL (575) 234-3341 CARLSBAD, NEW MEXICO

SECTION 36, TOWNSHIP 24 SOUTH, RANGE 31 EAST, N.M.P.M.  
EDDY COUNTY, STATE OF NEW MEXICO  
VICINITY MAP



DISTANCES IN MILES

NOT TO SCALE

**DIRECTIONS TO LOCATION**

FROM INTERSECTION OF ORLA HWY #1 & MONSANTO ROAD GO WEST ON MONSANTO ROAD APPROX. 2.1 MILES ROAD TURNS RIGHT (NORTH) GO NORTH APPROX. 0.9 MILES ROAD TURNS LEFT (WEST) GO WEST APPROX. 2.0 MILES ROAD TURNS RIGHT (NORTH) GO NORTH APPROX. 1.8 MILES ROAD TURNS LEFT (WEST) GO WEST APPROX. 0.3 MILES ROAD TURNS RIGHT (NORTH) GO NORTH 0.4 MILES CROSS CATTLE GUARD TURN RIGHT (EAST) GO EAST APPROX. 0.7 MILES ROAD TURNS LEFT (NORTH) GO NORTH APPROX. 0.9 MILES ROAD TURNS LEFT (WEST) GO WEST APPROX. 0.1 MILES EAST SIDE OF FRAC POND A ROAD LATH WITH RED AND WHITE FLAGGING LOCATION IS NORTH OF ROAD 400± FEET.

DEVON ENERGY PRODUCTION COMPANY, L.P.  
**COTTON DRAW UNIT #215H**

LOCATED 200 FT. FROM THE NORTH LINE  
AND 1760 FT. FROM THE WEST LINE OF  
SECTION 36, TOWNSHIP 24 SOUTH,  
RANGE 31 EAST, N.M.P.M.  
EDDY COUNTY, STATE OF NEW MEXICO

JUNE 1, 2013

SURVEY NO. 1887

MADRON SURVEYING, INC. 301 SOUTH CANAL (575) 234-3341

CARLSBAD, NEW MEXICO