

District I  
1625 N. French Dr., Hobbs, NM 88240  
Phone: (575) 393-6161 Fax: (575) 393-0720  
District II  
811 S. First St., Artesia, NM 88210  
Phone: (575) 748-1283 Fax: (575) 748-9720  
District III  
1000 Rio Brazos Road, Aztec, NM 87410  
Phone: (505) 334-6173 Fax: (505) 334-6170  
District IV  
1220 S. St. Francis Dr., Santa Fe, NM 87505  
Phone: (505) 476-3460 Fax: (505) 476-3462

State of New Mexico JUL 12 2013  
Energy, Minerals & Natural Resources Department  
OIL CONSERVATION DIVISION  
1220 South St. Francis Dr.  
Santa Fe, NM 87505

Form C-102  
Revised August 1, 2011  
Submit one copy to appropriate  
District Office

☐ AMENDED REPORT

WELL LOCATION AND ACREAGE DEDICATION PLAT

<sup>1</sup> API Number 30-015-41537		<sup>2</sup> Pool Code 96641		<sup>3</sup> Pool Name Paduca; Bone Spring (O)	
<sup>4</sup> Property Code 300635		<sup>5</sup> Property Name COTTON DRAW UNIT			<sup>6</sup> Well Number 214H
<sup>7</sup> OGRID No. 6137		<sup>8</sup> Operator Name DEVON ENERGY PRODUCTION COMPANY, L.P.			<sup>9</sup> Elevation 3507.6

<sup>10</sup> Surface Location

UL or lot no.	Section	Township	Range	Lot Idn	Feet from the	North/South line	Feet from the	East/West line	County
C	36	24 S	31 E		200	NORTH	1710	WEST	EDDY

<sup>11</sup> Bottom Hole Location If Different From Surface

UL or lot no.	Section	Township	Range	Lot Idn	Feet from the	North/South line	Feet from the	East/West line	County
M	36	24 S	31 E		330	SOUTH	660	WEST	EDDY

<sup>12</sup> Dedicated Acres	<sup>13</sup> Joint or Infill	<sup>14</sup> Consolidation Code	<sup>15</sup> Order No.
160			

No allowable will be assigned to this completion until all interests have been consolidated or a non-standard unit has been approved by the division.

<p>N89°39'31"E 2641.29 FT</p> <p>1710'</p> <p>NW CORNER SEC. 36 LAT. = 32.1810843°N LONG. = 103.7400380°W</p> <p>NMSP EAST (FT) N = 430119.30 E = 724891.03</p> <p>W/4 CORNER SEC. 36 LAT. = 32.1738255°N LONG. = 103.7400604°W</p> <p>NMSP EAST (FT) N = 427478.61 E = 724898.64</p> <p>SW CORNER SEC. 36 LAT. = 32.1666604°N LONG. = 103.7400852°W</p> <p>NMSP EAST (FT) N = 424872.03 E = 724905.34</p> <p>660'</p> <p>330'</p> <p>N89°59'58"W 2650.11 FT</p>		<p>N89°39'22"E 2641.18 FT</p> <p>SURFACE LOCATION</p> <p>200'</p> <p>N/4 CORNER SEC. 36 LAT. = 32.1810872°N LONG. = 103.7315028°W</p> <p>NMSP EAST (FT) N = 430135.04 E = 727531.69</p> <p>COTTON DRAW UNIT #214H ELEV. = 3507.6' LAT. = 32.1805364°N (NAD83) LONG. = 103.7345138°W</p> <p>NMSP EAST (FT) N = 429929.49 E = 726601.24</p> <p>NOTE: LATITUDE AND LONGITUDE COORDINATES ARE SHOWN USING THE NORTH AMERICAN DATUM OF 1983 (NAD83). LISTED NEW MEXICO STATE PLANE EAST COORDINATES ARE GRID (NAD83). BASIS OF BEARING AND DISTANCES USED ARE NEW MEXICO STATE PLANE EAST COORDINATES MODIFIED TO THE SURFACE.</p> <p>BOTTOM OF HOLE LAT. = 32.1675437°N LONG. = 103.7379531°W</p> <p>NMSP EAST (FT) N = 425197.00 E = 725563.32</p> <p>S/4 CORNER SEC. 36 LAT. = 32.1666199°N LONG. = 103.7315230°W</p> <p>NMSP EAST (FT) N = 424872.00 E = 727554.88</p> <p>330'</p> <p>S89°58'45"W 2651.42 FT</p>		<p>NE CORNER SEC. 36 LAT. = 32.1810898°N LONG. = 103.7229679°W</p> <p>NMSP EAST (FT) N = 430150.88 E = 730172.25</p> <p>E/4 CORNER SEC. 36 LAT. = 32.1738293°N LONG. = 103.7229618°W</p> <p>NMSP EAST (FT) N = 427509.60 E = 730189.13</p> <p>SE CORNER SEC. 36 LAT. = 32.1665815°N LONG. = 103.7229565°W</p> <p>NMSP EAST (FT) N = 424872.96 E = 730205.72</p> <p>S00°21'58"E 2641.91 FT</p> <p>S00°21'38"E 2637.26 FT</p>	
--	--	---	--	---	--

**<sup>17</sup> OPERATOR CERTIFICATION**

I hereby certify that the information contained herein is true and complete to the best of my knowledge and belief, and that this organization either owns a working interest or unleased mineral interest in the land including the proposed bottom hole location or has a right to drill this well at this location pursuant to a contract with an owner of such a mineral or working interest, or to a voluntary pooling agreement or a compulsory pooling order heretofore entered by the division.

Signature: *[Signature]* Date: 7/11/13

Ryan Delong, Regulatory Specialist

Printed Name

Ryan.Delong@dmn.com

E-mail Address

**<sup>18</sup> SURVEYOR CERTIFICATION**

I hereby certify that the well location shown on this plat was plotted from field notes of actual surveys made by me or under my supervision, and that the same is true and correct to the best of my belief.

JUNE 1, 2013

Date of Survey

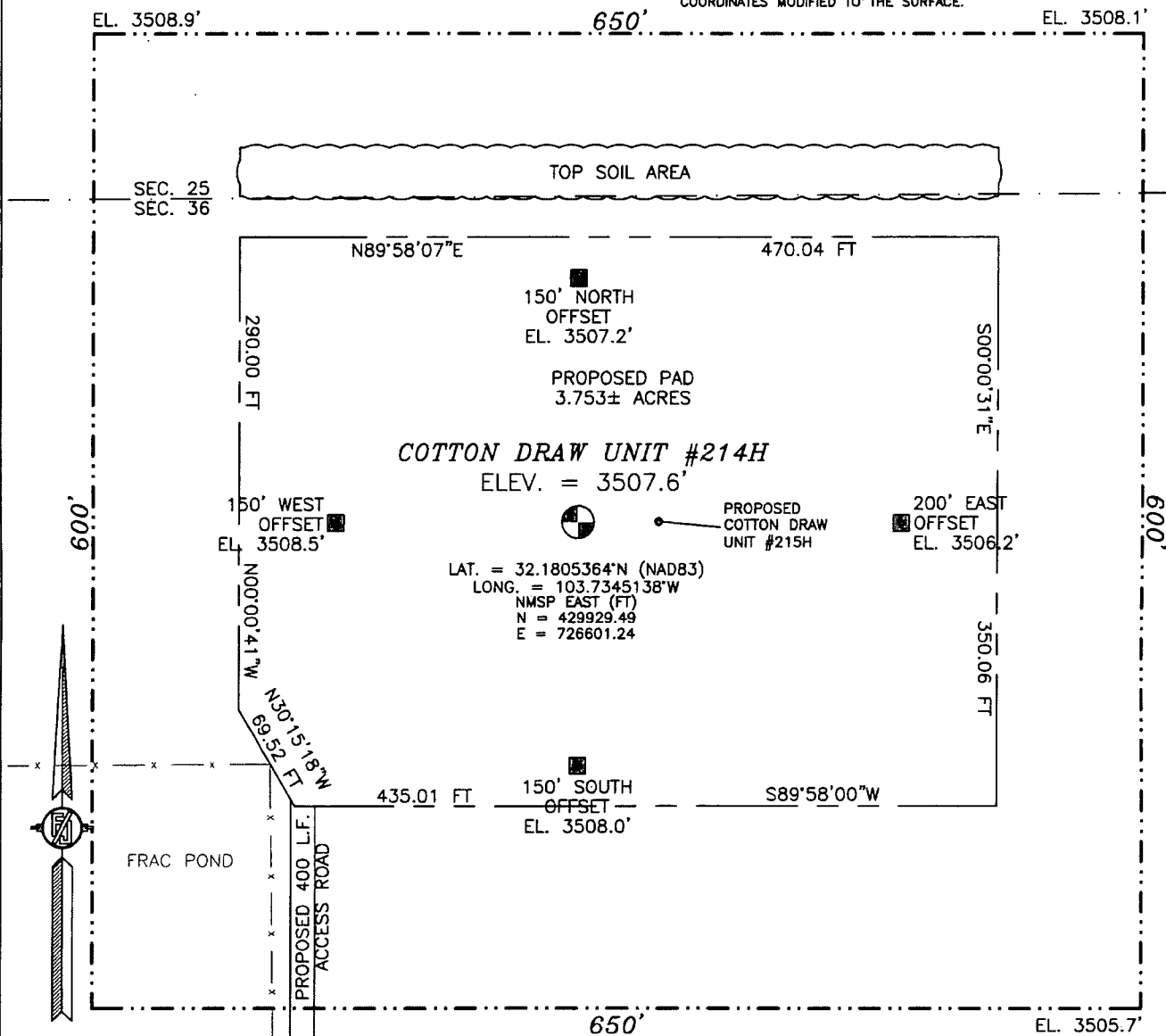
Signature and Seal of Professional Surveyor: *[Signature]*

Certificate Number: FILMON F. JARAMILLO, PLS 12797

RED LAND SURVEY NO. 1886

SECTION 36, TOWNSHIP 24 SOUTH, RANGE 31 EAST, N.M.P.M.  
EDDY COUNTY, STATE OF NEW MEXICO  
SITE MAP

NOTE: LATITUDE AND LONGITUDE COORDINATES ARE SHOWN USING THE NORTH AMERICAN DATUM OF 1983 (NAD83). LISTED NEW MEXICO STATE PLANE EAST COORDINATES ARE GRID (NAD83). BASIS OF BEARING AND DISTANCES USED ARE NEW MEXICO STATE PLANE EAST COORDINATES MODIFIED TO THE SURFACE.



010 50 100 200

SCALE 1" = 100'

**DIRECTIONS TO LOCATION**

FROM INTERSECTION OF ORLA HWY #1 & MONSANTO ROAD GO WEST ON MONSANTO ROAD APPROX. 2.1 MILES ROAD TURNS RIGHT (NORTH) GO NORTH APPROX. 0.9 MILES ROAD TURNS LEFT (WEST) GO WEST APPROX. 2.0 MILES ROAD TURNS RIGHT (NORTH) GO NORTH APPROX. 1.8 MILES ROAD TURNS LEFT (WEST) GO WEST APPROX. 0.3 MILES ROAD TURNS RIGHT (NORTH) GO NORTH 0.4 MILES CROSS CATTLE GUARD TURN RIGHT (EAST) GO EAST APPROX. 0.7 MILES ROAD TURNS LEFT (NORTH) GO NORTH APPROX. 0.9 MILES ROAD TURNS LEFT (WEST) GO WEST APPROX. 0.1 MILES EAST SIDE OF FRAC POND A ROAD LATH WITH RED AND WHITE FLAGGING LOCATION IS NORTH OF ROAD 400± FEET.

DEVON ENERGY PRODUCTION COMPANY, L.P.  
**COTTON DRAW UNIT #214H**

LOCATED 200 FT. FROM THE NORTH LINE  
AND 1710 FT. FROM THE WEST LINE OF  
SECTION 36, TOWNSHIP 24 SOUTH,  
RANGE 31 EAST, N.M.P.M.  
EDDY COUNTY, STATE OF NEW MEXICO

JUNE 1, 2013

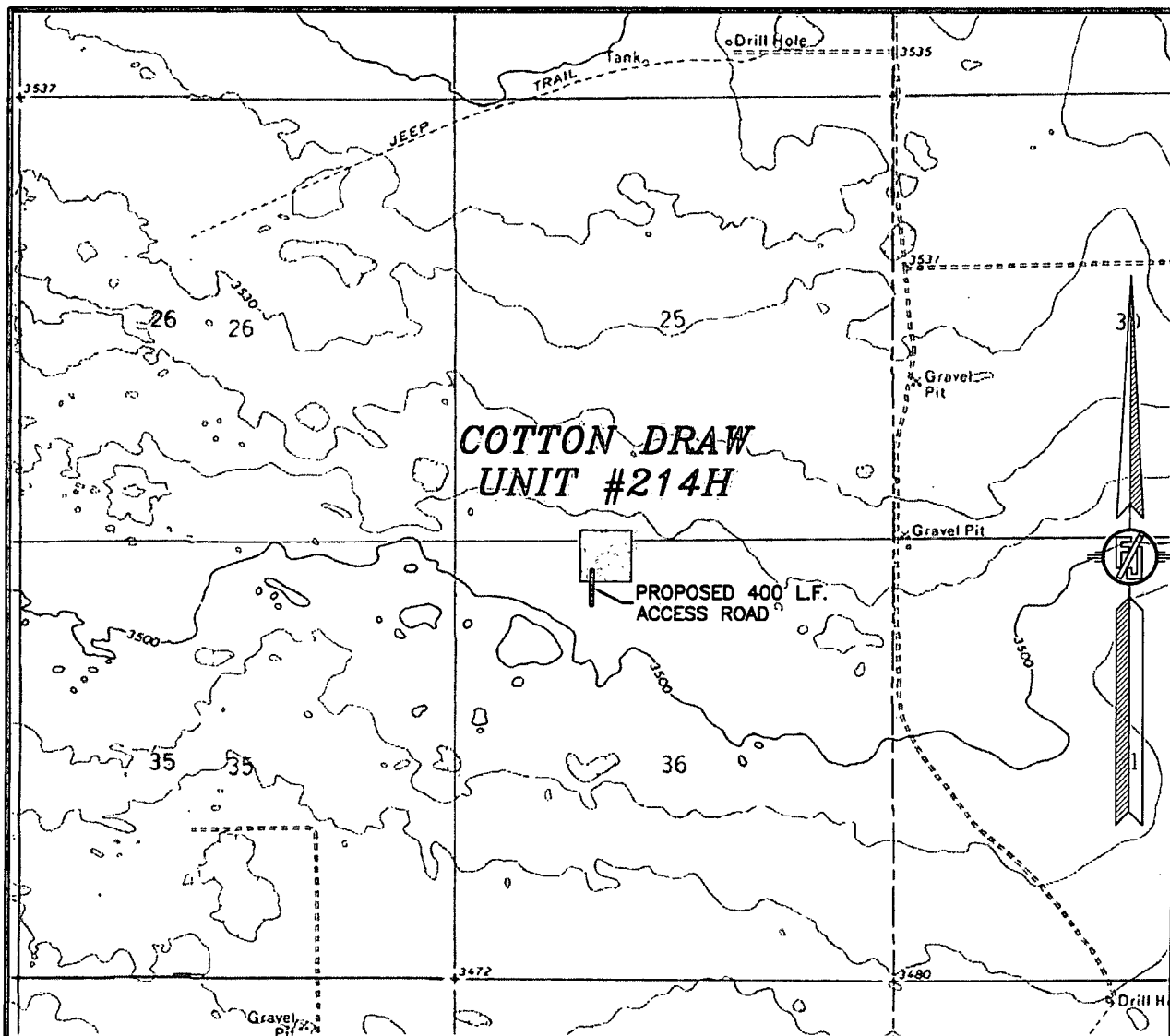
SURVEY NO. 1886

MADRON SURVEYING, INC.

301 SOUTH CANAL  
(575) 234-3341

CARLSBAD, NEW MEXICO

SECTION 36, TOWNSHIP 24 SOUTH, RANGE 31 EAST, N.M.P.M.  
EDDY COUNTY, STATE OF NEW MEXICO  
LOCATION VERIFICATION MAP



USGS QUAD MAP:  
PADUCA BREAKS NW

NOT TO SCALE

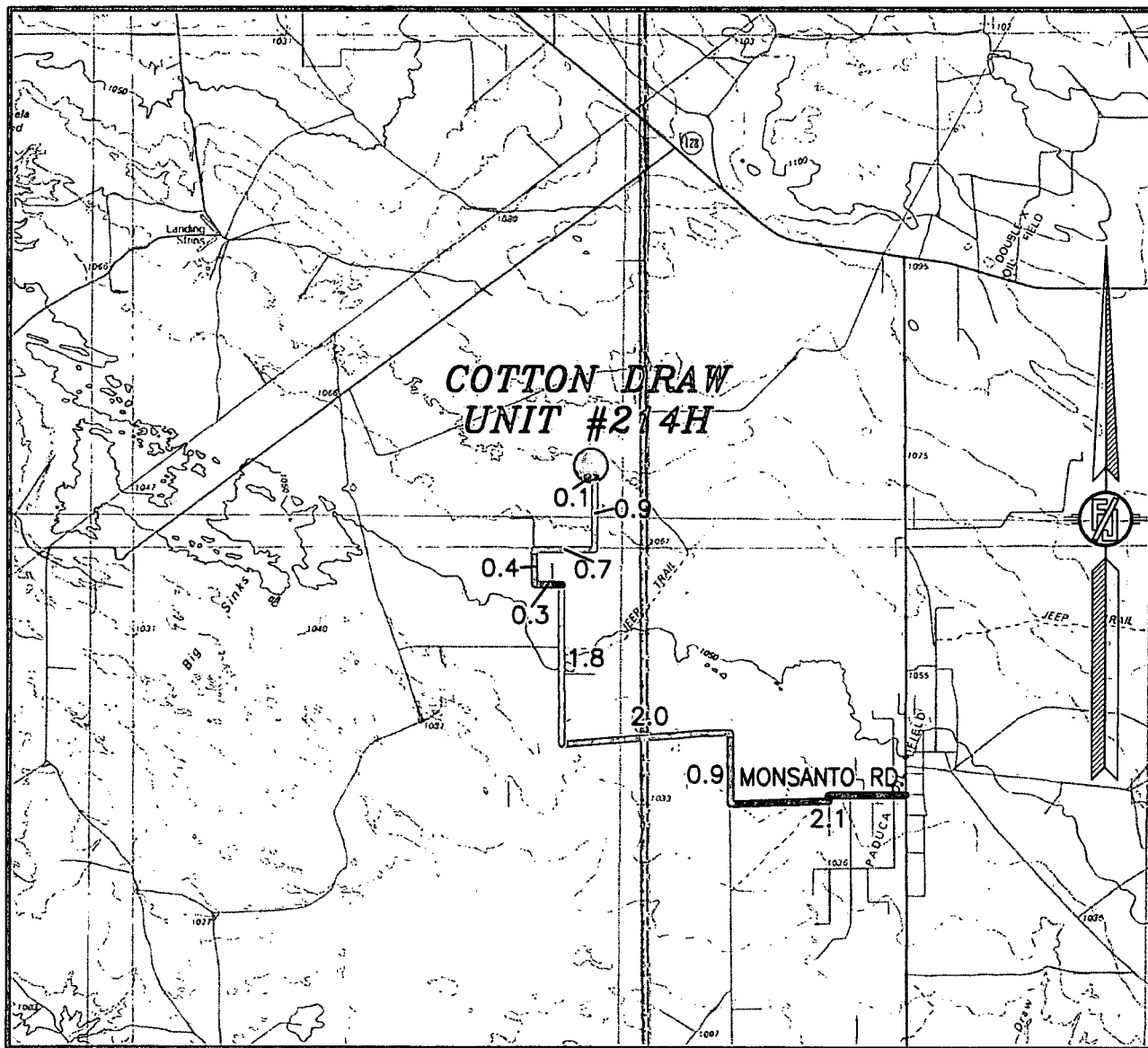
DEVON ENERGY PRODUCTION COMPANY, L.P.  
COTTON DRAW UNIT #214H  
LOCATED 200 FT. FROM THE NORTH LINE  
AND 1710 FT. FROM THE WEST LINE OF  
SECTION 36, TOWNSHIP 24 SOUTH,  
RANGE 31 EAST, N.M.P.M.  
EDDY COUNTY, STATE OF NEW MEXICO

JUNE 1, 2013

SURVEY NO. 1886

MADRON SURVEYING, INC. 301 SOUTH CANAL (575) 234-3341 CARLSBAD, NEW MEXICO

SECTION 36, TOWNSHIP 24 SOUTH, RANGE 31 EAST, N.M.P.M.  
EDDY COUNTY, STATE OF NEW MEXICO  
VICINITY MAP



DISTANCES IN MILES

NOT TO SCALE

**DIRECTIONS TO LOCATION**

FROM INTERSECTION OF ORLA HWY #1 & MONSANTO ROAD GO WEST ON MONSANTO ROAD APPROX. 2.1 MILES ROAD TURNS RIGHT (NORTH) GO NORTH APPROX. 0.9 MILES ROAD TURNS LEFT (WEST) GO WEST APPROX. 2.0 MILES ROAD TURNS RIGHT (NORTH) GO NORTH APPROX. 1.8 MILES ROAD TURNS LEFT (WEST) GO WEST APPROX. 0.3 MILES ROAD TURNS RIGHT (NORTH) GO NORTH 0.4 MILES CROSS CATTLE GUARD TURN RIGHT (EAST) GO EAST APPROX. 0.7 MILES ROAD TURNS LEFT (NORTH) GO NORTH APPROX. 0.9 MILES ROAD TURNS LEFT (WEST) GO WEST APPROX. 0.1 MILES EAST SIDE OF FRAC POND A ROAD LATH WITH RED AND WHITE FLAGGING LOCATION IS NORTH OF ROAD 400± FEET.

DEVON ENERGY PRODUCTION COMPANY, L.P.

**COTTON DRAW UNIT #214H**

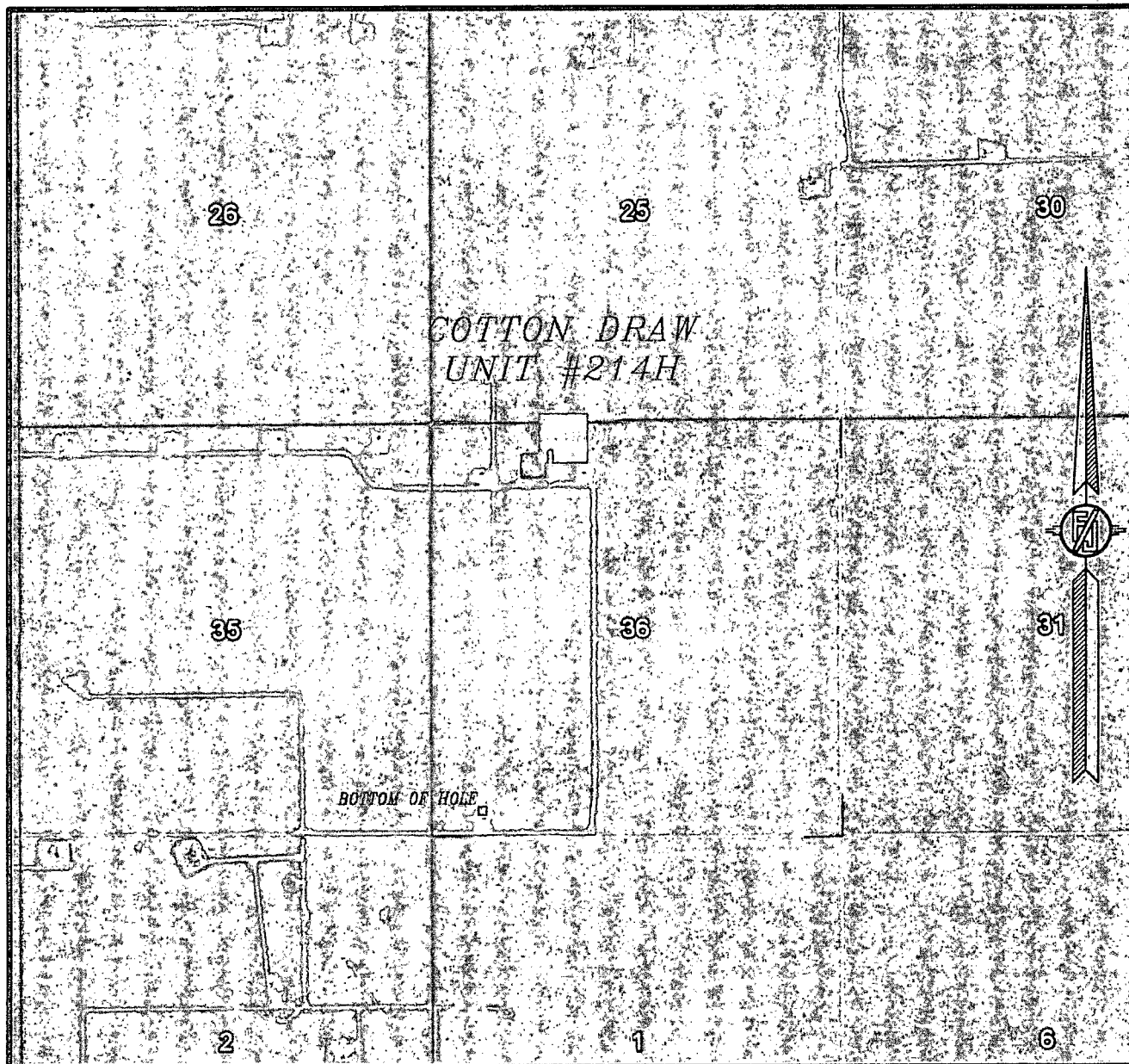
LOCATED 200 FT. FROM THE NORTH LINE  
AND 1710 FT. FROM THE WEST LINE OF  
SECTION 36, TOWNSHIP 24 SOUTH,  
RANGE 31 EAST, N.M.P.M.  
EDDY COUNTY, STATE OF NEW MEXICO

JUNE 1, 2013

SURVEY NO. 1886

MADRON SURVEYING, INC. 301 SOUTH CANAL (575) 234-3341 CARLSBAD, NEW MEXICO

SECTION 36, TOWNSHIP 24 SOUTH, RANGE 31 EAST, N.M.P.M.  
EDDY COUNTY, STATE OF NEW MEXICO  
AERIAL PHOTO



NOT TO SCALE  
AERIAL PHOTO:  
GOOGLE EARTH  
MARCH 2012

DEVON ENERGY PRODUCTION COMPANY, L.P.  
COTTON DRAW UNIT #214H

LOCATED 200 FT. FROM THE NORTH LINE  
AND 1710 FT. FROM THE WEST LINE OF  
SECTION 36, TOWNSHIP 24 SOUTH,  
RANGE 31 EAST, N.M.P.M.  
EDDY COUNTY, STATE OF NEW MEXICO

JUNE 1, 2013

SURVEY NO. 1886

MADRON SURVEYING, INC. 301 SOUTH CANAL (575) 234-3341 CARLSBAD, NEW MEXICO