

District I  
1625 N. French Dr., Hobbs, NM 88240

District II  
811 S. First St., Artesia, NM 88210

District III  
1000 Rio Brazos Rd., Aztec, NM 87410

District IV  
1220 S. St. Francis Dr., Santa Fe, NM 87505

State of New Mexico  
Energy, Minerals & Natural Resources

Form C-104  
Revised August 1, 2011

Submit one copy to appropriate District Office

Oil Conservation Division  
1220 South St. Francis Dr.  
Santa Fe, NM 87505

AMENDED REPORT

I. REQUEST FOR ALLOWABLE AND AUTHORIZATION TO TRANSPORT

<sup>1</sup> Operator Name and Address Devon Energy Production Company, LP 333 West Sheridan Oklahoma City, OK 73102		<sup>2</sup> OGRID Number 6137
		<sup>3</sup> Reason for Filing Code NW
<sup>4</sup> API Number 30-015-40999	<sup>5</sup> Pool Name Hackberry; Bone Spring, EAST	<sup>6</sup> Pool Code 96746 41480
<sup>7</sup> Property Code 39415 39649	<sup>8</sup> Property Name Agasti 27 Federal	<sup>9</sup> Well Number 1H

II. <sup>10</sup> Surface Location

UI or lot no. M	Section 22	Township T19S	Range R31E	Lot.Idn	Feet from the 440	North/South Line North	Feet from the 100	East/West Line East	County Eddy
--------------------	---------------	------------------	---------------	---------	----------------------	---------------------------	----------------------	------------------------	----------------

<sup>11</sup> Bottom Hole Location

UI or lot no. A	Section 27	Township T19S	Range R31E	Lot.Idn	Feet from the 340	North/South Line North	Feet from the 345	East/West Line East	County Eddy
--------------------	---------------	------------------	---------------	---------	----------------------	---------------------------	----------------------	------------------------	----------------

<sup>12</sup> Lse Code F	<sup>13</sup> Producing Method Code P	<sup>14</sup> Gas Connection Date 6/6/13	<sup>15</sup> C-129 Permit Number	<sup>16</sup> C-129 Effective Date	<sup>17</sup> C-129 Expiration Date
-----------------------------	--	---	-----------------------------------	------------------------------------	-------------------------------------

III. Oil and Gas Transporters

<sup>18</sup> Transporter OGRID 278421	<sup>19</sup> Transporter Name and Address HOLLY FRONTIER 10 DESTA DR SUITE 350 W MIDLAND, TX 79705	<sup>20</sup> O/G/W O
36785	DCP PO BOX 50020 MIDLAND, TX 79710-0020	G
Tbg set @ 9006'		

IV. Well Completion Data

<sup>21</sup> Spud Date 2/9/13	<sup>22</sup> Ready Date 6/6/13	<sup>23</sup> TD 13,813' / 9177	<sup>24</sup> PBDT 13,675'	<sup>25</sup> Perforations 9151 - 13,740'	<sup>26</sup> DHC, DC, MC
<sup>27</sup> Hole Size 26'	<sup>28</sup> Casing & Tubing Size 20" J-55	<sup>29</sup> Depth Set 689'	<sup>30</sup> Sacks Cement 1550 sx CI C; Circ 776 sx		
17 1/2"	13 3/8" J-55	2615'	1890 sx C; Circ 339 sx		
12 1/4"	9 5/8" J-55	4152'	1425 sx CI C; Circ 136 sx		
8 3/4"	5 1/2" P110	13,183'	2050 sx CI H; 400 sx C; Circ 345 sx		

VI. Well Test Data

<sup>31</sup> Date New Oil 6/6/13 13	<sup>32</sup> Gas Delivery Date 6/6/13	<sup>33</sup> Test Date 6/6/13	<sup>34</sup> Test Length 24	<sup>35</sup> Tbg. Pressure 375	<sup>36</sup> Csg. Pressure 150
<sup>37</sup> Choke Size	<sup>38</sup> Oil 334	<sup>39</sup> Water 1994	<sup>40</sup> Gas 293		<sup>41</sup> Test Method Pumping

<sup>42</sup> I hereby certify that the rules of the Oil Conservation Division have been complied with and that the information given above is true and complete to the best of my knowledge and belief.

Signature: *Judy A. Barnett*

Printed Name: Judy A. Barnett x8699

Title: Regulatory Specialist

E-mail address: [judith.barnett@dmv.com](mailto:judith.barnett@dmv.com)

Date: 7/1/2013 Phone: 405-235-3611

OIL CONSERVATION DIVISION

Approved by:

Title:

Approval Date:

*T.C. Shepard*

*Dist 11 Geologist*

*7/26/13*

**District I**

1625 N. French Dr., Hobbs, NM 88240

**District II**

1301 W. Grand Avenue, Artesia, NM 88210

**District III**

1000 Rio Brazos Rd., Aztec, NM 87410

**District IV**

1220 S. St. Francis Dr., Santa Fe, NM 87505

## State of New Mexico

Energy, Minerals &amp; Natural Resources Department

## OIL CONSERVATION DIVISION

1220 South St. Francis Dr.

Santa Fe, NM 87505

Form C-102

Revised October 15, 2009

Submit one copy to appropriate

District Office

☐ AMENDED REPORT

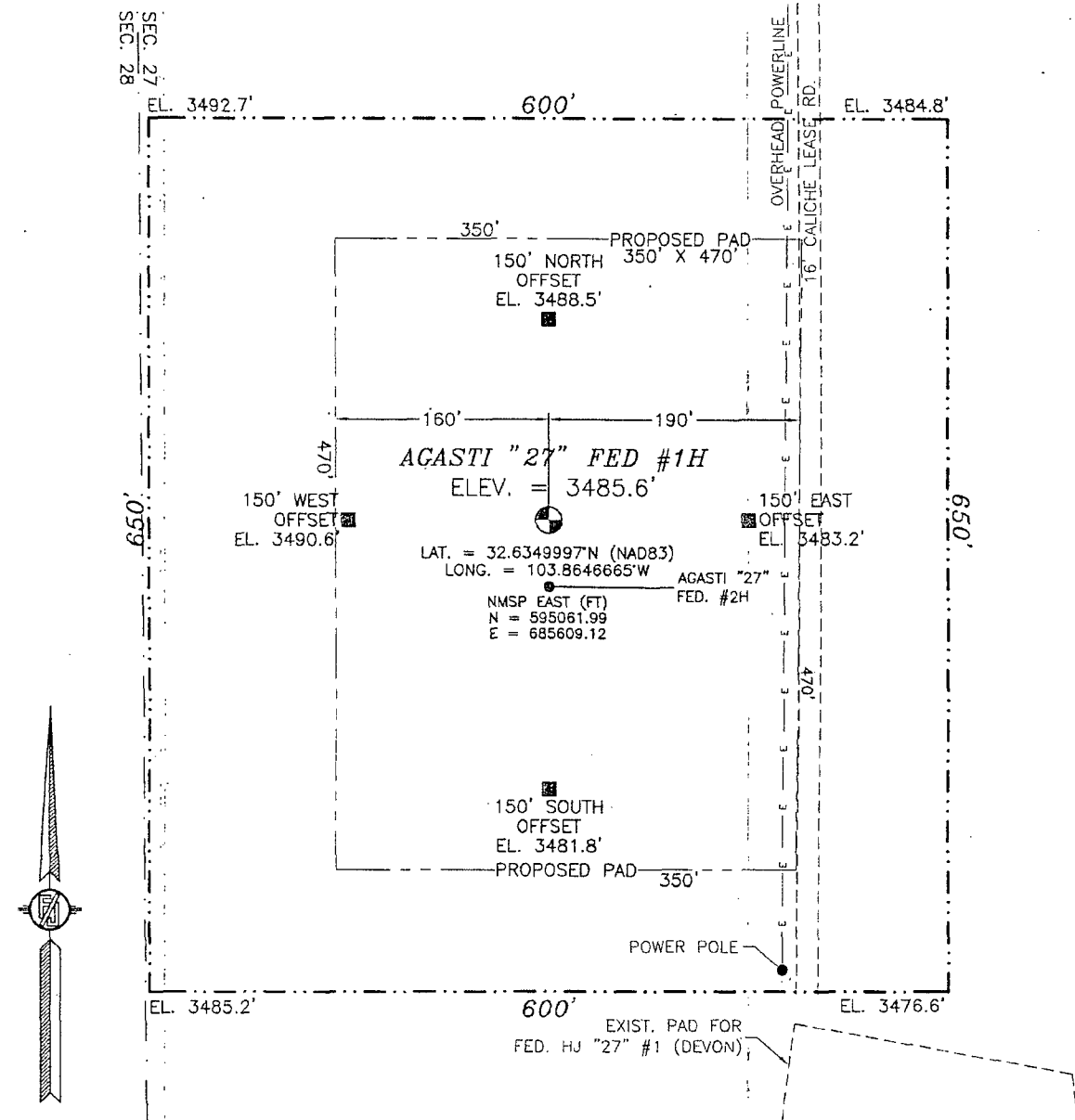
## WELL LOCATION AND ACREAGE DEDICATION PLAT

<sup>1</sup> API Number 30-015-40999		<sup>2</sup> Pool Code 96746		<sup>3</sup> Pool Name Hackberry; Bone Spring East					
<sup>4</sup> Property Code 39649		<sup>5</sup> Property Name AGASTI "27" FED						<sup>6</sup> Well Number 1H	
<sup>7</sup> OGRID No. 6137		<sup>8</sup> Operator Name DEVON ENERGY PRODUCTION COMPANY, L.P.						<sup>9</sup> Elevation 3485.6	
<sup>10</sup> Surface Location									
UL or lot no. E	Section 27	Township 19 S	Range 31 E	Lot Idn	Feet from the 1340	North/South line NORTH	Feet from the 305	East/West line WEST	County EDDY
<sup>11</sup> Bottom Hole Location If Different From Surface									
UL or lot no. A	Section 27	Township 19 S	Range 31 E	Lot Idn	Feet from the 340	North/South line NORTH	Feet from the 345	East/West line EAST	County EDDY
<sup>12</sup> Dedicated Acres 160		<sup>13</sup> Joint or Infill		<sup>14</sup> Consolidation Code		<sup>15</sup> Order No.			

No allowable will be assigned to this completion until all interests have been consolidated or a non-standard unit has been approved by the division.

<p>SW CORNER SEC. 27 LAT. = 32.6241690°N LONG. = 103.8656232°W NMSP EAST (FT) N = 591120.38 E = 685331.96</p>		<p>S O CORNER SEC. 27 LAT. = 32.6241794°N LONG. = 103.8570588°W NMSP EAST (FT) N = 591135.87 E = 687968.69</p>		<p>SE CORNER SEC. 27 LAT. = 32.6241892°N LONG. = 103.8484760°W NMSP EAST (FT) N = 591151.39 E = 690610.18</p>	
<p>PP: 713 FNL &amp; 330 FWL Project Area: — Production Area: —</p>					
<p>17 OPERATOR CERTIFICATION I hereby certify that the information contained herein is true and complete to the best of my knowledge and belief, and that this organization either owns a working interest or unleased mineral interest in the land including the proposed bottom hole location or has a right to drill this well at this location pursuant to a contract with an owner of such a mineral or working interest, or to a voluntary pooling agreement or a compulsory pooling order heretofore entered by the division.</p> <p>Signature: <i>Judy A. Barnett</i> Date: 1/30/13 Printed Name: Judy A. Barnett, Regulatory Specialist</p>					
<p>18 SURVEYOR CERTIFICATION I hereby certify that the well location shown on this plat was plotted from field notes of actual surveys made by me or under my supervision, and that the same is true and correct to the best of my belief.</p> <p>MAY 23, 2012 Date of Survey</p> <p>Signature and Seal of Professional Surveyor: <i>[Signature]</i> Certificate Number: FILLMORE LARAMEE CO. PLS 12797 SURVEY NO. 1049</p>					

SECTION 27, TOWNSHIP 19 SOUTH, RANGE 31 EAST, N.M.P.M.  
EDDY COUNTY, STATE OF NEW MEXICO



DEVON ENERGY PRODUCTION COMPANY, L.P.  
**AGASTI "27" FED #1H**  
LOCATED 1340 FT. FROM THE NORTH LINE  
AND 305 FT. FROM THE WEST LINE OF  
SECTION 27, TOWNSHIP 19 SOUTH,  
RANGE 31 EAST, N.M.P.M.  
EDDY COUNTY, STATE OF NEW MEXICO

MAY 23, 2012

SURVEY NO. 1049

MADRON SURVEYING, INC. 301 SOUTH CANAL (575) 234-3341 CARLSBAD, NEW MEXICO

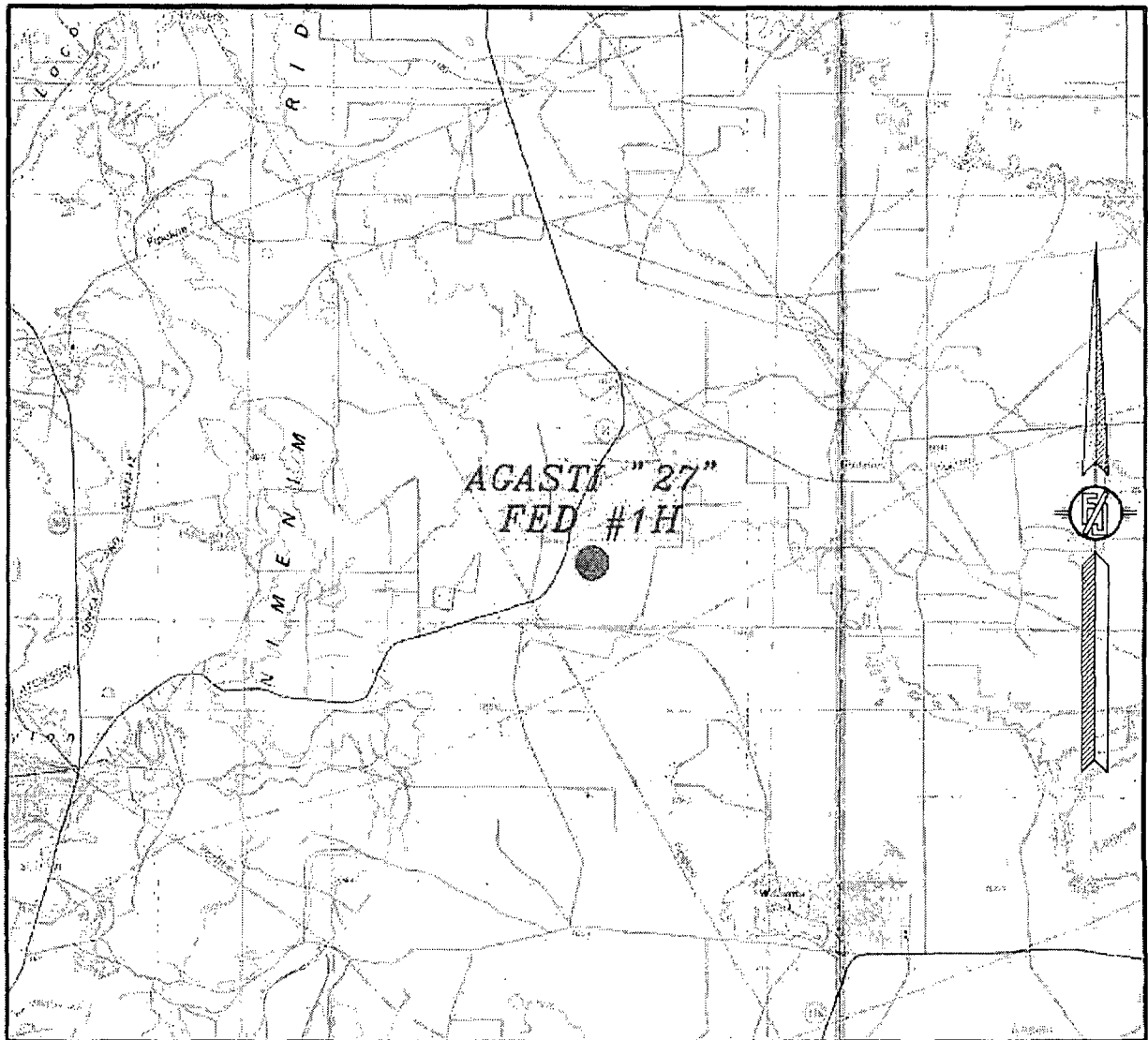
NOT TO SCALE

MAY 23, 2012

MADRON SURVEYING, INC. 301 SOUTH CANAL CARLSBAD, NEW MEXICO  
(575) 234-3341

301 SOUTH CANAL  
(575) 234-3341

SECTION 27, TOWNSHIP 19 SOUTH, RANGE 31 EAST, N.M.P.M.  
EDDY COUNTY, STATE OF NEW MEXICO  
VICINITY MAP



NOT TO SCALE

DEVON ENERGY PRODUCTION COMPANY, L.P.

AGASTI "27" FED #1H

LOCATED 1340 FT. FROM THE NORTH LINE  
AND 305 FT. FROM THE WEST LINE OF  
SECTION 27, TOWNSHIP 19 SOUTH,  
RANGE 31 EAST, N.M.P.M.  
EDDY COUNTY, STATE OF NEW MEXICO

MAY 23, 2012

SURVEY NO. 1049

MADRON SURVEYING, INC. 301 SOUTH CANAL (575) 234-3341 CARLSBAD, NEW MEXICO

SECTION 27, TOWNSHIP 19 SOUTH, RANGE 31 EAST, N.M.P.M.  
EDDY COUNTY, STATE OF NEW MEXICO  
AERIAL PHOTO



NOT TO SCALE  
AERIAL PHOTO:  
GOOGLE EARTH  
MARCH, 2012

DEVON ENERGY PRODUCTION COMPANY, L.P.

AGASTI "27" FED #1H

LOCATED 1340 FT. FROM THE NORTH LINE  
AND 305 FT. FROM THE WEST LINE OF  
SECTION 27, TOWNSHIP 19 SOUTH,  
RANGE 31 EAST, N.M.P.M.  
EDDY COUNTY, STATE OF NEW MEXICO

MAY 23, 2012

SURVEY NO. 1049

MADRON SURVEYING, INC. 301 SOUTH CANAL (575) 234-3341 CARLSBAD, NEW MEXICO