

DISTRICT I
 925 N. French Dr., Hobbs, NM 88240
 Phone (575) 393-6161 Fax: (575) 393-0720

DISTRICT II
 11 S. First St., Artesia, NM 88210
 Phone (575) 746-1283 Fax: (575) 746-0720

DISTRICT III
 900 Rio Brazos Rd., Aztec, NM 87410
 Phone (505) 334-6178 Fax: (505) 334-6170

DISTRICT IV
 220 S. St. Francis Dr., Santa Fe, NM 87505
 Phone (505) 476-3460 Fax: (505) 476-3462

State of New Mexico
 Energy, Minerals and Natural Resources Department

Form C-102
 Revised August 1, 2011
 Submit one copy to appropriate
 District Office

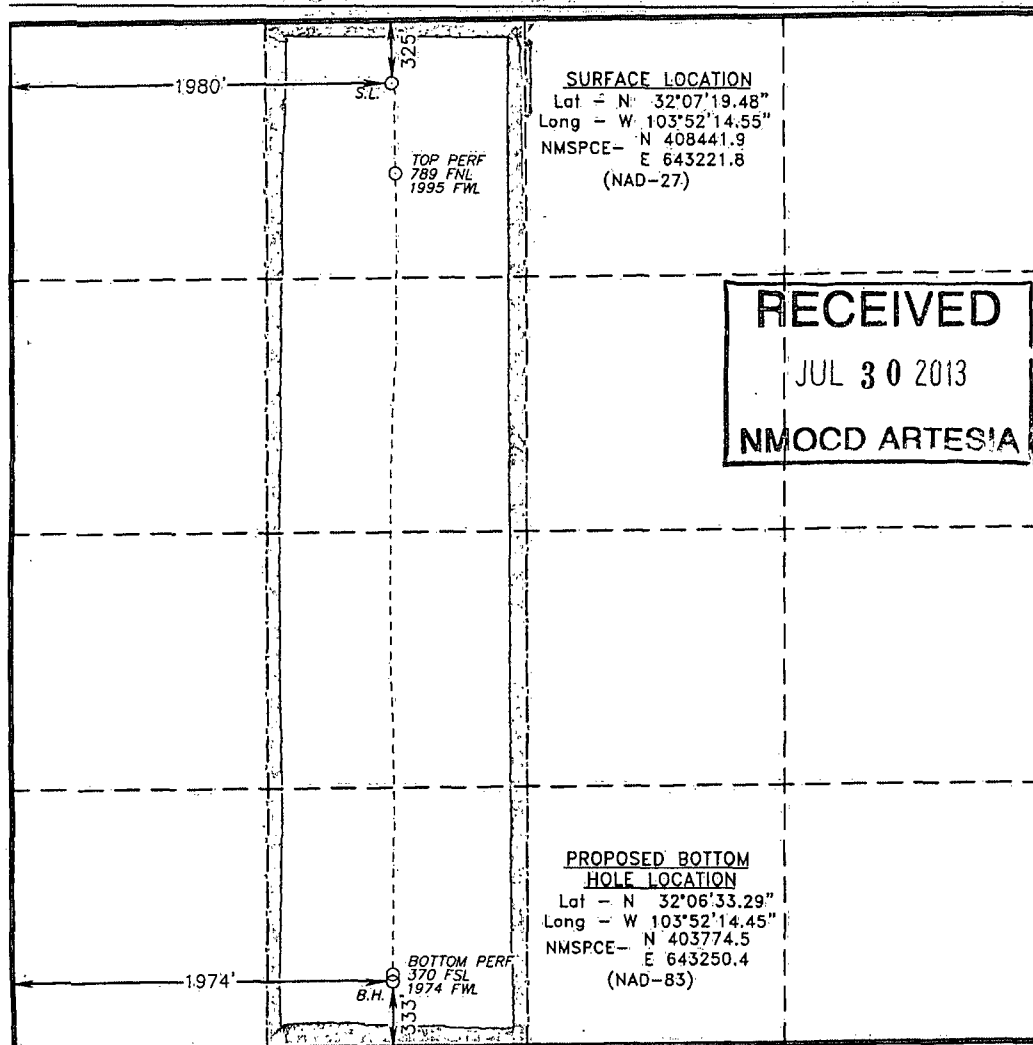
OIL CONSERVATION DIVISION
 1220 South St. Francis Dr.
 Santa Fe, New Mexico 87505

WELL LOCATION AND ACREAGE DEDICATION PLAT

☐ AMENDED REPORT

API Number 30-015-40763		Pool Code 96238		Pool Name CORRAL CANYON; BONE SPRING					
Property Code 39488		Property Name PLU PHANTOM BANKS 22 25 30 USA				Well Number 1H			
GRID No. 260737		Operator Name BOPCO, LP				Elevation 3241'			
Surface Location									
UL or lot No. C	Section 22	Township 25 S	Range 30 E	Lot Idn	Feet from the 325	North/South line NORTH	Feet from the 1980	East/West line WEST	County EDDY
Bottom Hole Location If Different From Surface									
UL or lot No. N	Section 22	Township 25 S	Range 30 E	Lot Idn	Feet from the 333	North/South line SOUTH	Feet from the 1974	East/West line WEST	County EDDY
Dedicated Acres 160		Joint or Infill		Consolidation Code		Order No.			

NO ALLOWABLE WILL BE ASSIGNED TO THIS COMPLETION UNTIL ALL INTERESTS HAVE BEEN CONSOLIDATED
 OR A NON-STANDARD UNIT HAS BEEN APPROVED BY THE DIVISION



RECEIVED
 JUL 30 2013
NMOCD ARTESIA

OPERATOR CERTIFICATION

I hereby certify that the information contained herein is true and complete to the best of my knowledge and belief, and that this organization either owns a working interest or unleased mineral interest in the land including the proposed bottom hole location or has a right to drill this well at this location pursuant to a contract with an owner of such a mineral or working interest, or to a voluntary pooling agreement or a compulsory pooling order heretofore entered by the division.

Tracie J Cherry 07-11-13
 Signature Date
 Printed Name
 tjcherry@basspet.com
 Email Address

SURVEYOR CERTIFICATION

I hereby certify that the well location shown on this plat was plotted from field notes of actual surveys made by me or under my supervision, and that the same is true and correct to the best of my belief.

Date Surveyed
 Signature & Seal of Professional Surveyor

Certificate No.