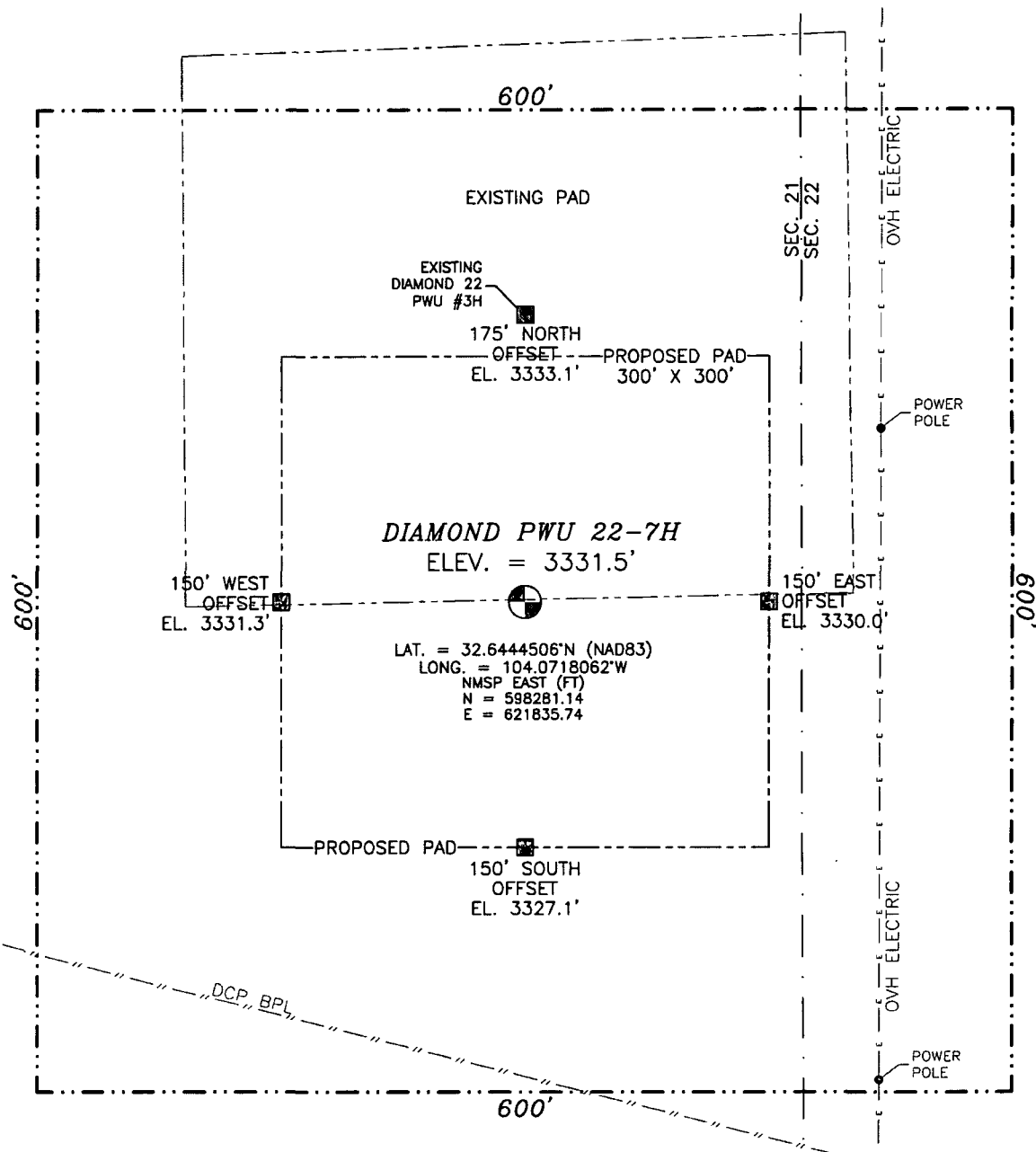


Certificate Number: **FILS00NP**, TARAMILLO, PLS 12797
SURVEY NO. 1240

SECTION 21, TOWNSHIP 19 SOUTH, RANGE 29 EAST, N.M.P.M.
EDDY COUNTY, STATE OF NEW MEXICO



010 50 100 200

SCALE 1" = 100'

DIRECTIONS TO LOCATION

FROM THE INTERSECTION OF CR 206 (ILLINOIS CAMP) AND CR 235 (CURRY COMB) GO SE. ON CR 235 FOR 3.1 MILES TO CR 248 (MILLMAN RD.) CONTINUE LEFT (EAST) ON CR. 235 FOR 8.0 MILES THEN TURN RIGHT ON CALICHE LEASE ROAD 0.82 MILES TURN RIGHT (EAST) ON CALICHE LEASE ROAD 0.15 MILES TO PAD FOR DIAMOND PWU 22 #003H SITE IS ON THE SOUTH EDGE OF PAD

DEVON ENERGY PRODUCTION COMPANY, L.P.
DIAMOND PWU 22-7H

**LOCATED 1970 FT. FROM THE SOUTH LINE
AND 170 FT. FROM THE EAST LINE OF
SECTION 21, TOWNSHIP 19 SOUTH,
RANGE 29 EAST, N.M.P.M.
EDDY COUNTY, STATE OF NEW MEXICO**

SEPTEMBER 6, 2012

SURVEY NO. 1240

MADRON SURVEYING, INC. 301 SOUTH CANAL (575) 234-3341 CARLSBAD, NEW MEXICO

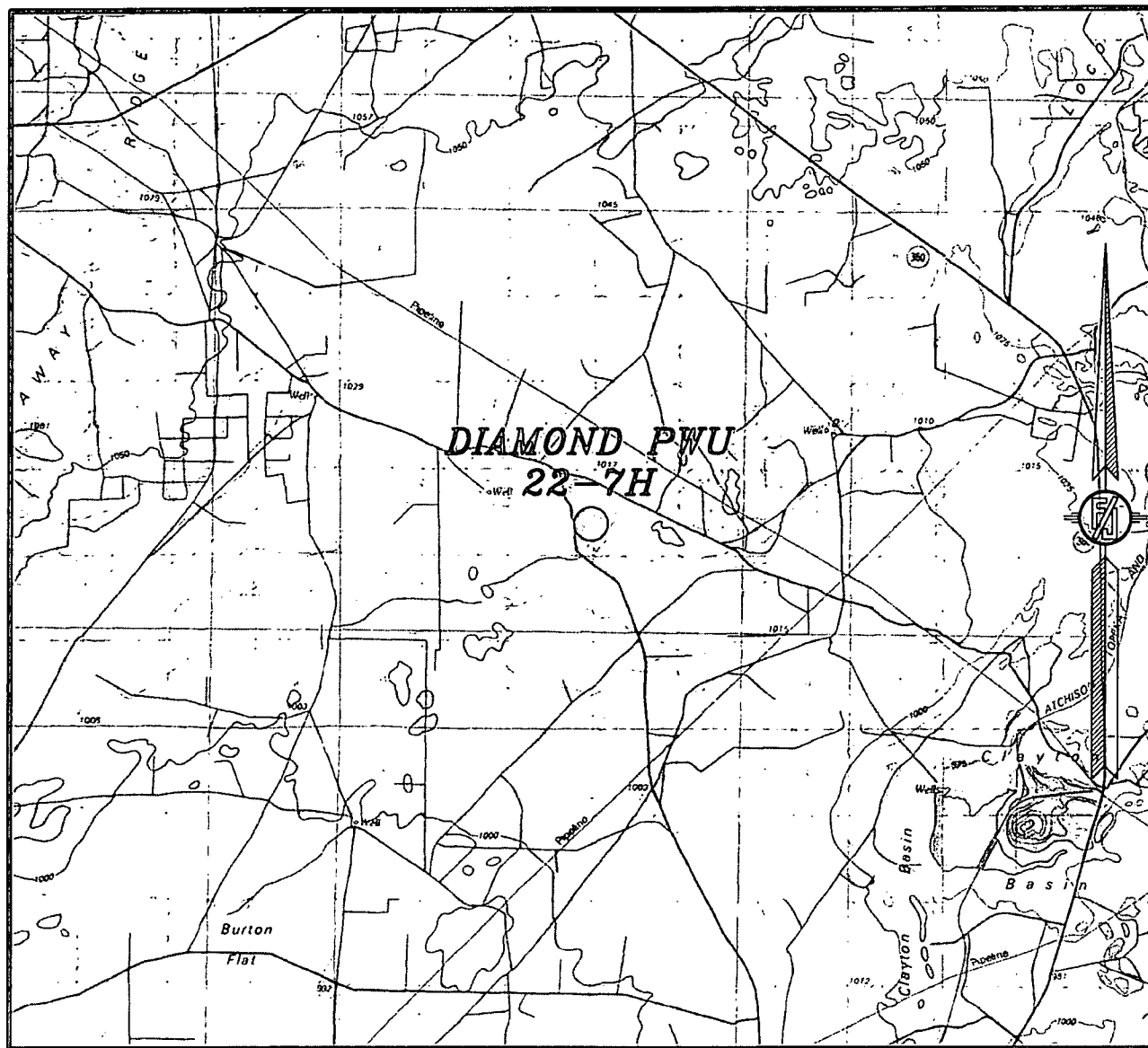
Topographic map of the Diamond PWU area, showing contour lines, elevation points, and a grid. The map is labeled "DIAMOND PWU 22-7H" in the center. A north arrow is located in the bottom right corner. The map includes various elevation points marked with "x" and "T", and a grid system with letters and numbers.

NOT TO SCALE

SEPTEMBER 6, 2012

MADRON SURVEYING, INC. 301 SOUTH CANAL (575) 234-3341 **CARLSBAD, NEW MEXICO**

SECTION 21, TOWNSHIP 19 SOUTH, RANGE 29 EAST, N.M.P.M.
EDDY COUNTY, STATE OF NEW MEXICO
VICINITY MAP



NOT TO SCALE

DEVON ENERGY PRODUCTION COMPANY, L.P.
DIAMOND PWU 22-7H

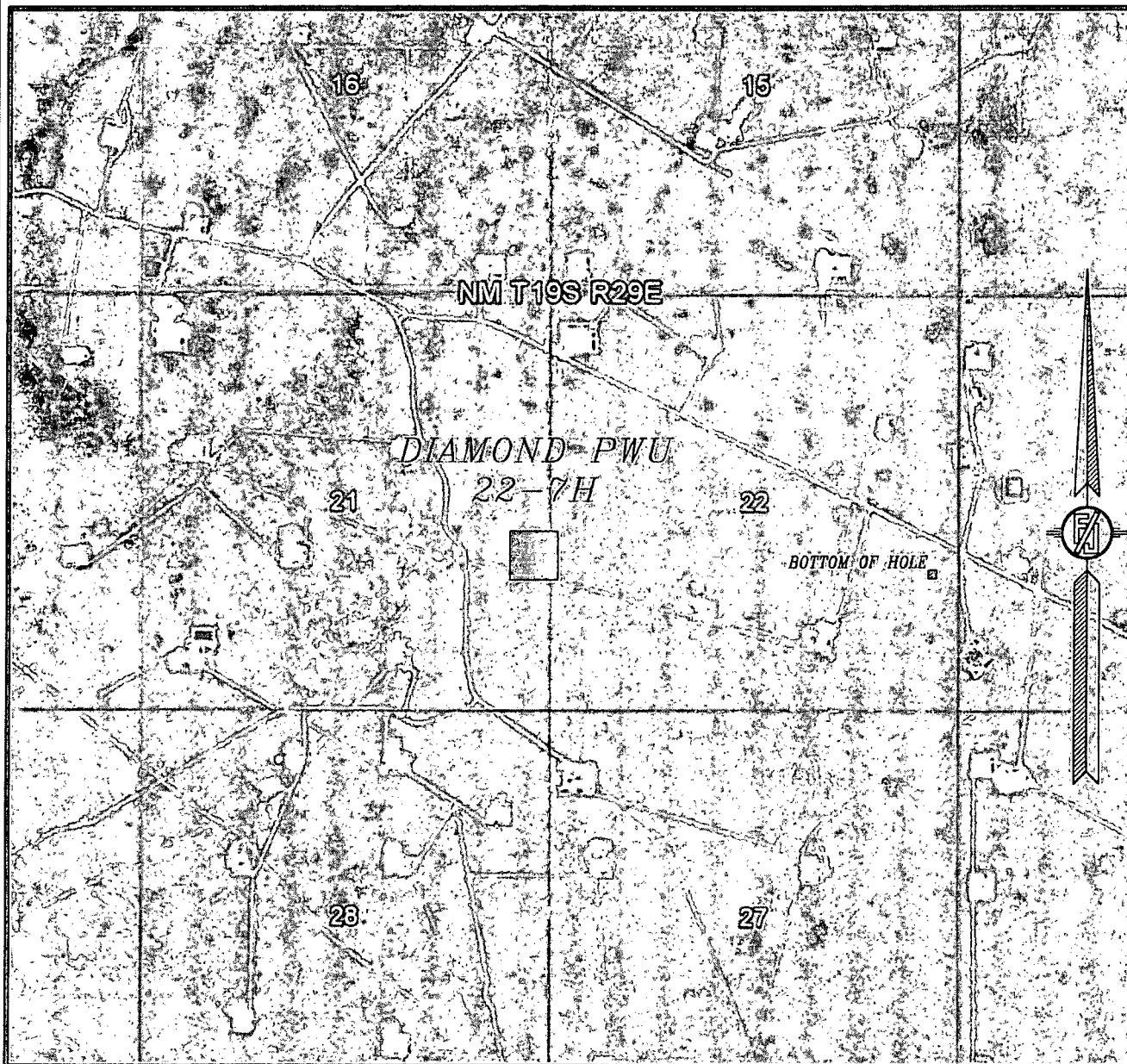
LOCATED 1970 FT. FROM THE SOUTH LINE
AND 170 FT. FROM THE EAST LINE OF
SECTION 21, TOWNSHIP 19 SOUTH,
RANGE 29 EAST, N.M.P.M.
EDDY COUNTY, STATE OF NEW MEXICO

SEPTEMBER 6, 2012

SURVEY NO. 1240

MADRON SURVEYING, INC. 301 SOUTH CANAL CARLSBAD, NEW MEXICO
(575) 234-3341

SECTION 21, TOWNSHIP 19 SOUTH, RANGE 29 EAST, N.M.P.M.
EDDY COUNTY, STATE OF NEW MEXICO
AERIAL PHOTO



NOT TO SCALE
AERIAL PHOTO:
GOOGLE EARTH
JUNE 2011

DEVON ENERGY PRODUCTION COMPANY, L.P.
DIAMOND PWU 22-7H

LOCATED 1970 FT. FROM THE SOUTH LINE
AND 170 FT. FROM THE EAST LINE OF
SECTION 21, TOWNSHIP 19 SOUTH,
RANGE 29 EAST, N.M.P.M.
EDDY COUNTY, STATE OF NEW MEXICO

SEPTEMBER 6, 2012

SURVEY NO. 1240

MADRON SURVEYING, INC. 301 SOUTH CANAL CARLSBAD, NEW MEXICO
(575) 234-3341