

District I
1625 N. French Dr., Hobbs, NM 88240
Phone: (575) 393-6161 Fax: (575) 393-0720
District II
811 S. First St., Artesia, NM 88210
Phone: (505) 748-1283 Fax: (575) 748-0720
District III
1000 Rio Brazos Road, Aztec, NM 87410
Phone: (505) 334-6173 Fax: (505) 334-6170
District IV
1220 S. St. Francis Dr., Santa Fe, NM 87505
Phone: (505) 476-3460 Fax: (505) 476-3462

State of New Mexico
Energy, Minerals & Natural Resources Department
OIL CONSERVATION DIVISION
1220 South St. Francis Dr.
Santa Fe, NM 87505

Form C-102
Revised August 1, 2011
Submit one copy to appropriate
District Office

RECEIVED

AUG 23 2012

X

AMENDED REPORT

NMOCD ARTESIA

WELL LOCATION AND ACREAGE DEDICATION PLAT

¹ API Number 30-015-41007	² Pool Code 60660	³ Pool Name Turkey Track; Bone Spring
⁴ Property Code 38433	⁵ Property Name DIAMOND PWU 22	⁶ Well Number 7H
⁷ OGRID No. 6137	⁸ Operator Name DEVON ENERGY PRODUCTION COMPANY, L.P.	⁹ Elevation 3331.5

¹⁰ Surface Location

UL or lot no.	Section	Township	Range	Lot Idn	Feet from the	North/South line	Feet from the	East/West line	County
I	21	19 S	29 E		1970	SOUTH	170	EAST	EDDY

¹¹ Bottom Hole Location If Different From Surface

UL or lot no.	Section	Township	Range	Lot Idn	Feet from the	North/South line	Feet from the	East/West line	County
I	22	19 S	29 E		1776	SOUTH	360	EAST	EDDY

¹² Dedicated Acres 160	¹³ Joint or Infill	¹⁴ Consolidation Code	¹⁵ Order No.
--------------------------------------	-------------------------------	----------------------------------	-------------------------

No allowable will be assigned to this completion until all interests have been consolidated or a non-standard unit has been approved by the division.

PP: 1970 FSL & 170 FEL	Project Area: _____	Production Area: _____
------------------------	---------------------	------------------------

NW CORNER SEC. 21 LAT. = 32.6535924°N LONG. = 104.0883657°W NMSP EAST (FT) N = 601594.86 E = 616731.03	SECTION CORNER LAT. = 32.6535396°N LONG. = 104.0711864°W NMSP EAST (FT) N = 601588.25 E = 622018.36	NE CORNER SEC. 22 LAT. = 32.6534311°N LONG. = 104.0540526°W NMSP EAST (FT) N = 601562.23 E = 627291.75
-----------------------------------------------------------------------------------------------------------------------	--------------------------------------------------------------------------------------------------------------------	-----------------------------------------------------------------------------------------------------------------------

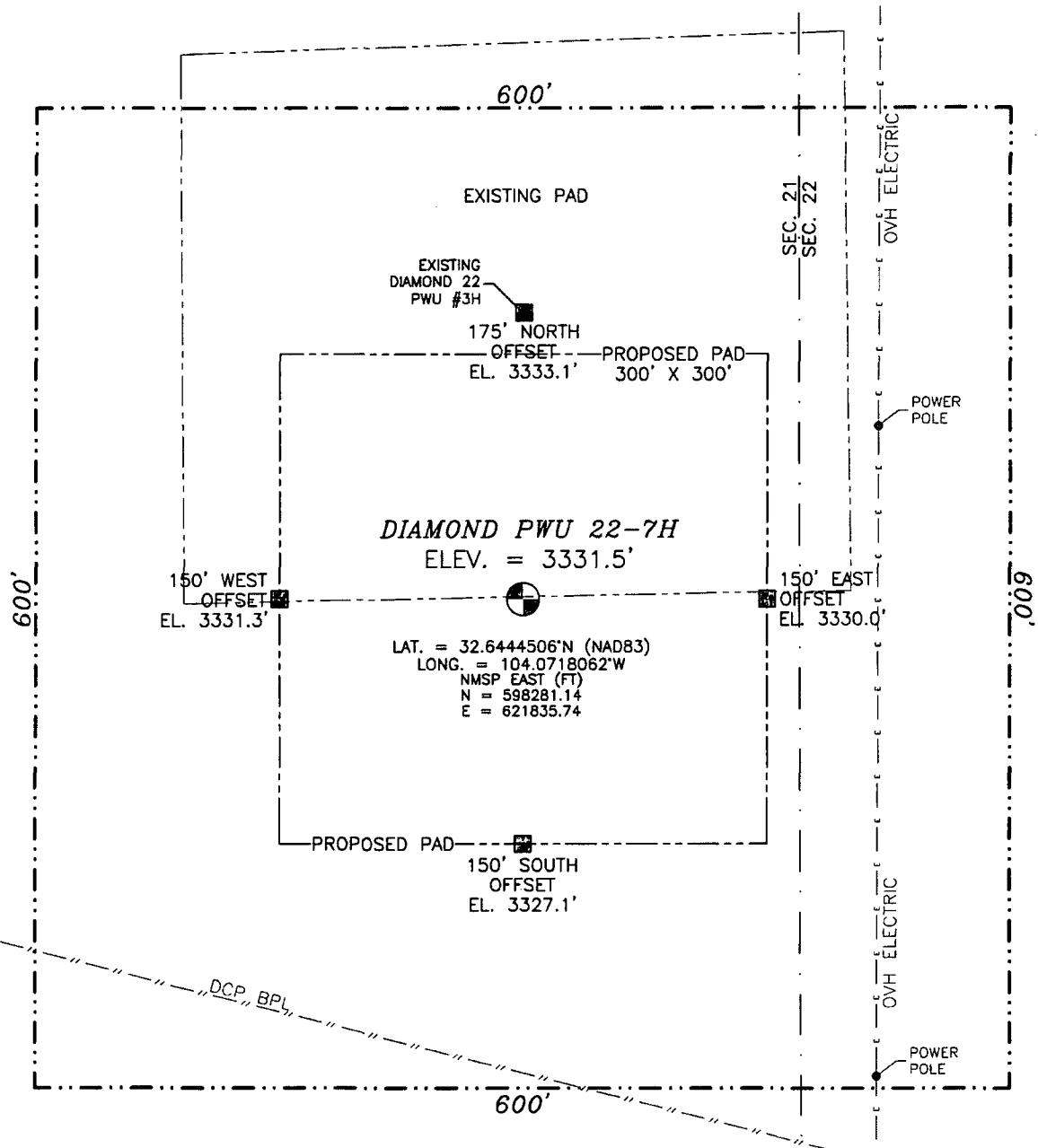
N O CORNER SEC. 21 LAT. = 32.6535936°N LONG. = 104.0797751°W NMSP EAST (FT) N = 601586.93 E = 619375.01	SEC. 21 DIAMOND PWU 22-7H ELEV. = 3331.5' LAT. = 32.6444506°N (NAD83) LONG. = 104.0718062°W NMSP EAST (FT) N = 598281.14 E = 6211835.74	1/4 CORNER LAT. = 32.6462644°N LONG. = 104.0712566°W NMSP EAST (FT) N = 598941.42 E = 622003.29	SEC. 22 NMSP EAST (FT) N = 598938.77 E = 626364.55
------------------------------------------------------------------------------------------------------------------------	--------------------------------------------------------------------------------------------------------------------------------------------------------------	----------------------------------------------------------------------------------------------------------------	-------------------------------------------------------------

W O CORNER SEC. 21 LAT. = 32.6463286°N LONG. = 104.0883984°W NMSP EAST (FT) N = 598952.19 E = 616727.68	S O CORNER SEC. 21 LAT. = 32.6390356°N LONG. = 104.0798189°W NMSP EAST (FT) N = 596305.14 E = 619374.13	SW CORNER SEC. 21 LAT. = 32.6390699°N LONG. = 104.0883927°W NMSP EAST (FT) N = 596311.43 E = 616734.90	SECTION CORNER LAT. = 32.6390370°N LONG. = 104.0712463°W NMSP EAST (FT) N = 596312.05 E = 622012.94	SE CORNER SEC. 22 LAT. = 32.6389396°N LONG. = 104.0541330°W NMSP EAST (FT) N = 596290.05 E = 627280.86
------------------------------------------------------------------------------------------------------------------------	------------------------------------------------------------------------------------------------------------------------	-----------------------------------------------------------------------------------------------------------------------	--------------------------------------------------------------------------------------------------------------------	-----------------------------------------------------------------------------------------------------------------------

170' LONG. = 104.0551782°W OF HOLE SURFACE LOCATION NMSP EAST (FT) N = 598938.77 E = 626364.55	360' NMSP EAST (FT) N = 598938.77 E = 626364.55
------------------------------------------------------------------------------------------------------------	----------------------------------------------------------

¹⁷ OPERATOR CERTIFICATION I hereby certify that the information contained herein is true and complete to the best of my knowledge and belief, and that this organization either owns a working interest or unleased mineral interest in the land including the proposed bottom hole location or has a right to drill this well at this location pursuant to a contract with an owner of such a mineral or working interest, or to a voluntary pooling agreement or a compulsory pooling order heretofore entered into by this organization. Signature: _____ Date: 8/22/13 Ryan Delong, Regulatory Specialist Printed Name Ryan.Delong@dmn.com E-mail Address		
¹⁸ SURVEYOR CERTIFICATION I hereby certify that the well location shown on this plat was plotted from field notes of actual surveys made by me or under my supervision, and that the same is true and correct to the best of my belief. SEPTEMBER 2012 Date of Survey Signature and Seal of Professional Surveyor Certificate Number: _____ SAN ANTONIO, PLS 12797 SURVEY NO. 1240		

SECTION 21, TOWNSHIP 19 SOUTH, RANGE 29 EAST, N.M.P.M.
EDDY COUNTY, STATE OF NEW MEXICO



010 50 100 200

SCALE 1" = 100'

DIRECTIONS TO LOCATION

FROM THE INTERSECTION OF CR 206 (ILLINOIS CAMP) AND CR 235 (CURRY COMB) GO SE. ON CR 235 FOR 3.1 MILES TO CR 248 (MILLMAN RD.) CONTINUE LEFT (EAST) ON CR. 235 FOR 6.0 MILES THEN TURN RIGHT ON CALICHE LEASE ROAD 0.82 MILES TURN RIGHT (EAST) ON CALICHE LEASE ROAD 0.15 MILES TO PAD FOR DIAMOND PWU 22 #003H SITE IS ON THE SOUTH EDGE OF PAD

DEVON ENERGY PRODUCTION COMPANY, L.P.
DIAMOND PWU 22-7H

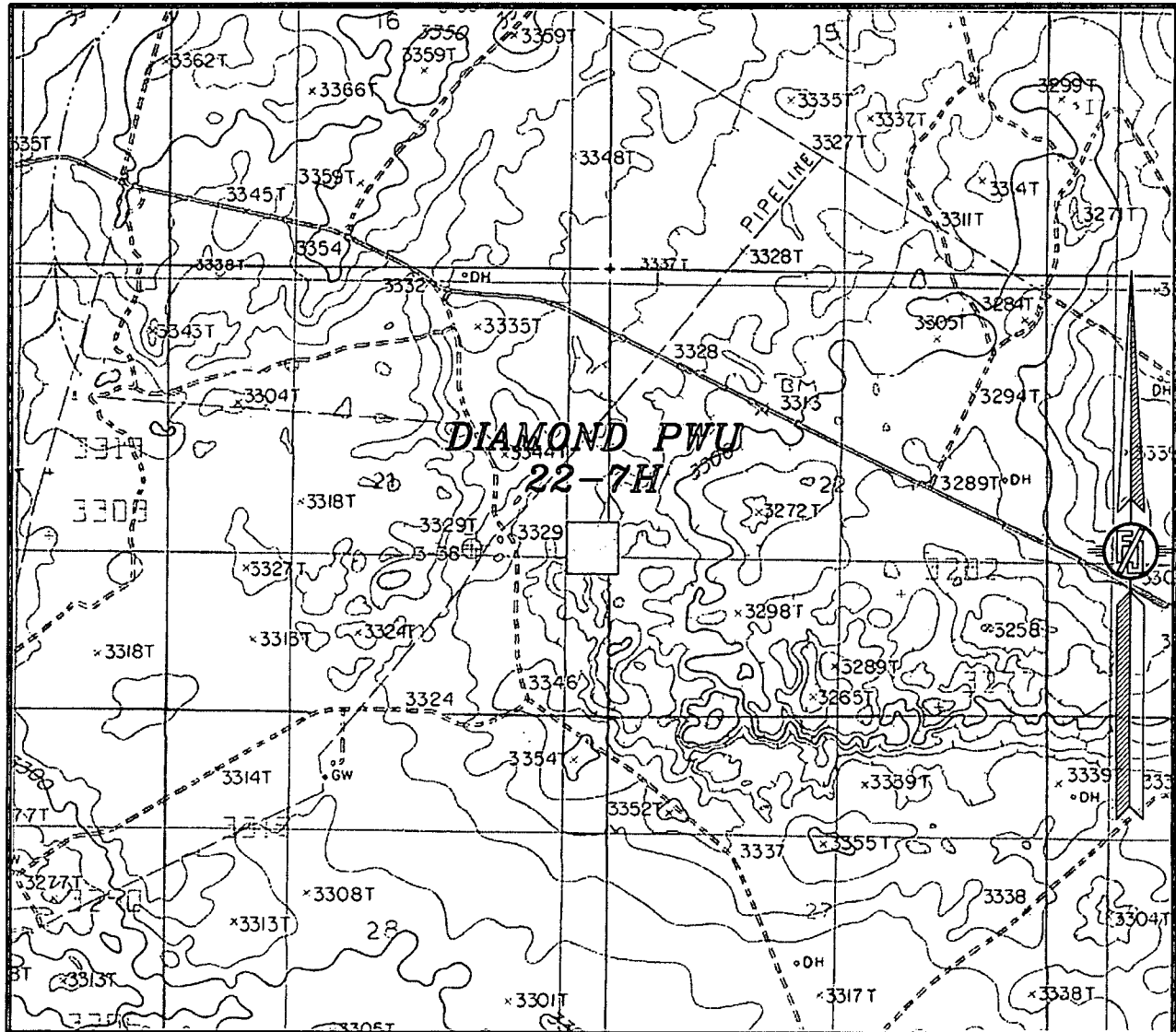
LOCATED 1970 FT. FROM THE SOUTH LINE
AND 170 FT. FROM THE EAST LINE OF
SECTION 21, TOWNSHIP 19 SOUTH,
RANGE 29 EAST, N.M.P.M.
EDDY COUNTY, STATE OF NEW MEXICO

SEPTEMBER 6, 2012

SURVEY NO. 1240

MADRON SURVEYING, INC. 301 SOUTH CANAL CARLSBAD, NEW MEXICO
(575) 234-3341

SECTION 21, TOWNSHIP 19 SOUTH, RANGE 29 EAST, N.M.P.M.
 EDDY COUNTY, STATE OF NEW MEXICO
 LOCATION VERIFICATION MAP



USGS QUAD MAP:
 ILLINOIS CAMP NE

NOT TO SCALE

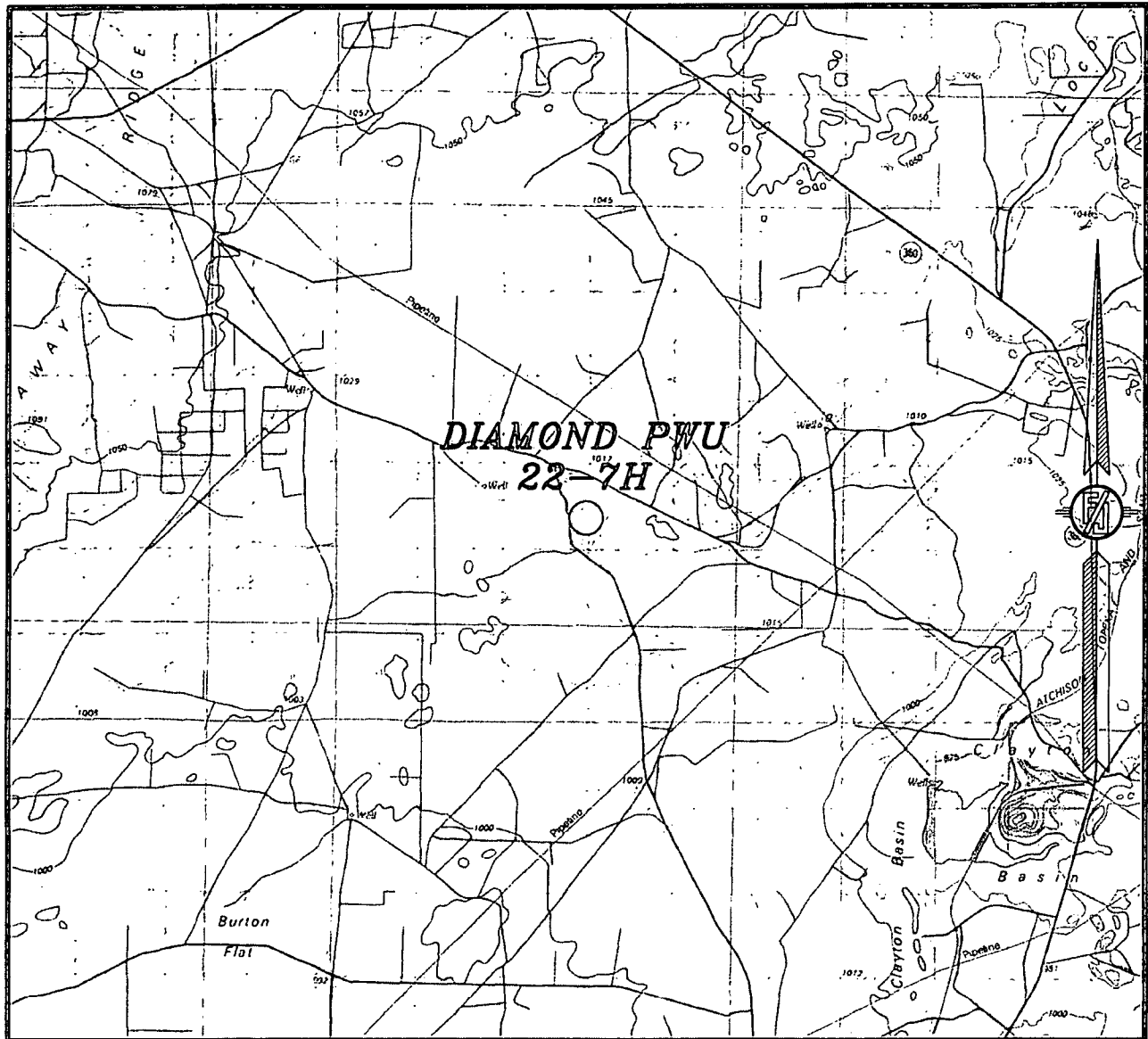
DEVON ENERGY PRODUCTION COMPANY, L.P.
 DIAMOND PWU 22-7H
 LOCATED 1970 FT. FROM THE SOUTH LINE
 AND 170 FT. FROM THE EAST LINE OF
 SECTION 21, TOWNSHIP 19 SOUTH,
 RANGE 29 EAST, N.M.P.M.
 EDDY COUNTY, STATE OF NEW MEXICO

SEPTEMBER 6, 2012

SURVEY NO. 1240

MADRON SURVEYING, INC. 301 SOUTH CANAL (575) 234-3341 CARLSBAD, NEW MEXICO

SECTION 21, TOWNSHIP 19 SOUTH, RANGE 29 EAST, N.M.P.M.
EDDY COUNTY, STATE OF NEW MEXICO
VICINITY MAP



NOT TO SCALE

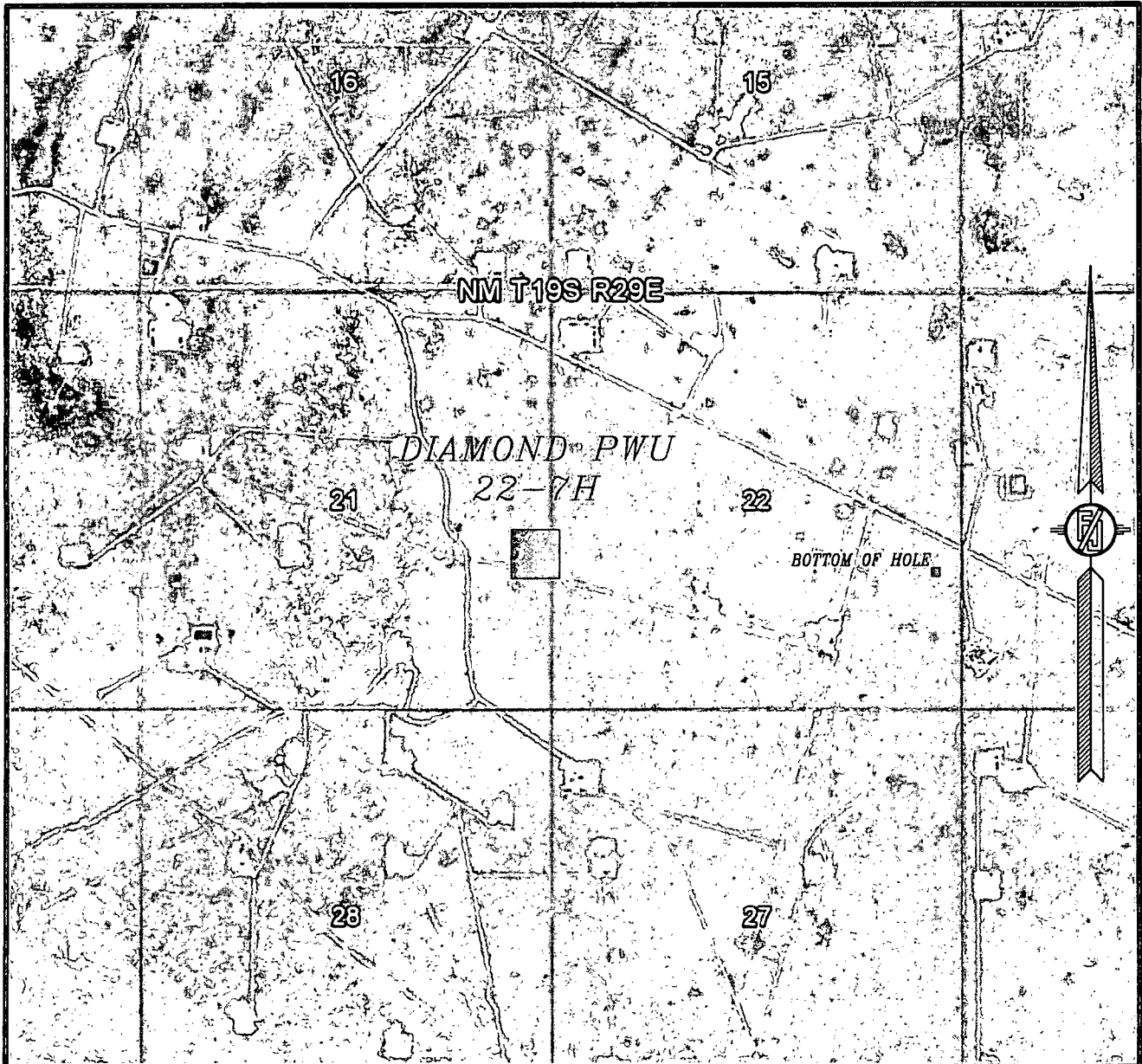
DEVON ENERGY PRODUCTION COMPANY, L.P.
DIAMOND PWU 22-7H
LOCATED 1970 FT. FROM THE SOUTH LINE
AND 170 FT. FROM THE EAST LINE OF
SECTION 21, TOWNSHIP 19 SOUTH,
RANGE 29 EAST, N.M.P.M.
EDDY COUNTY, STATE OF NEW MEXICO

SEPTEMBER 6, 2012

SURVEY NO. 1240

MADRON SURVEYING, INC. 301 SOUTH CANAL (575) 234-3341 CARLSBAD, NEW MEXICO

SECTION 21, TOWNSHIP 19 SOUTH, RANGE 29 EAST, N.M.P.M.
EDDY COUNTY, STATE OF NEW MEXICO
AERIAL PHOTO



NOT TO SCALE
AERIAL PHOTO:
GOOGLE EARTH
JUNE 2011

DEVON ENERGY PRODUCTION COMPANY, L.P.
DIAMOND PWU 22-7H

LOCATED 1970 FT. FROM THE SOUTH LINE
AND 170 FT. FROM THE EAST LINE OF
SECTION 21, TOWNSHIP 19 SOUTH,
RANGE 29 EAST, N.M.P.M.
EDDY COUNTY, STATE OF NEW MEXICO

SEPTEMBER 6, 2012

SURVEY NO. 1240

MADRON SURVEYING, INC. 301 SOUTH CANAL (575) 234-3341 CARLSBAD, NEW MEXICO