

District I  
1625 N. French Dr., Hobbs, NM 88240  
Phone: (575) 393-6161 Fax: (575) 393-0720  
District II  
811 S. First St., Artesia, NM 88210  
Phone: (575) 748-1283 Fax: (575) 748-0720  
District III  
1000 Rio Brazos Road, Aztec, NM 87410  
Phone: (505) 334-6178 Fax: (505) 334-6170  
District IV  
1220 S. St. Francis Dr., Santa Fe, NM 87505  
Phone: (505) 476-2460 Fax: (505) 476-3462

State of New Mexico  
Energy, Minerals & Natural Resources Department  
OIL CONSERVATION DIVISION  
1220 South St. Francis Dr.  
Santa Fe, NM 87505



Form C-102  
Revised August 1, 2011  
Submit one copy to appropriate  
District Office  
AMENDED REPORT

WELL LOCATION AND ACREAGE DEDICATION PLAT

<sup>1</sup> API Number <b>30-015-40758</b>		<sup>2</sup> Pool Code <b>3713</b>		<sup>3</sup> Pool Name <b>AVALON; BONE SPRING, EAST</b>	
<sup>4</sup> Property Code <b>302209</b>		<sup>5</sup> Property Name <b>BURTON FLAT DEEP UNIT</b>			<sup>6</sup> Well-Number <b>50H</b>
<sup>7</sup> OGRID No. <b>6137</b>		<sup>8</sup> Operator Name <b>DEVON ENERGY PRODUCTION COMPANY, L.P.</b>			<sup>9</sup> Elevation <b>3217.4</b>

<sup>10</sup> Surface Location

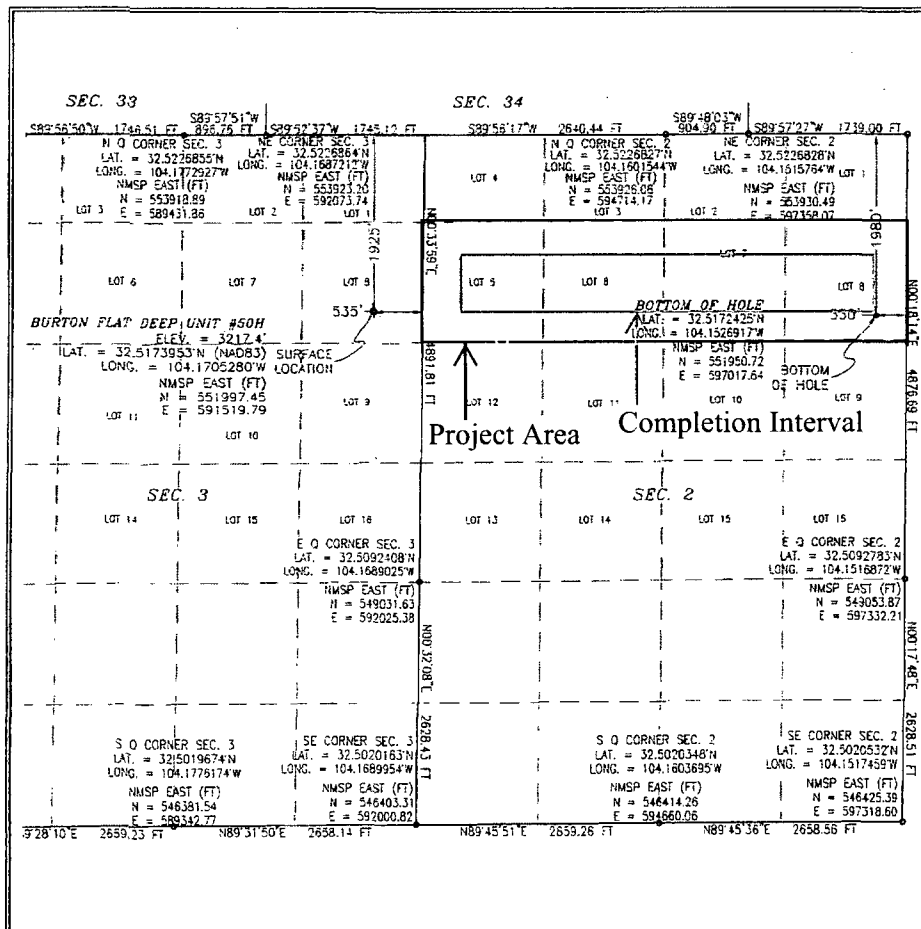
UL or lot no.	Section	Township	Range	Lot Idn	Feet from the	North/South line	Feet from the	East/West line	County
8	3	21 S	27 E		1925	NORTH	535	EAST	EDDY

<sup>11</sup> Bottom Hole Location If Different From Surface

UL or lot no.	Section	Township	Range	Lot Idn	Feet from the	North/South line	Feet from the	East/West line	County
8	2	21 S	27 E			NORTH		EAST	EDDY

<sup>12</sup> Dedicated Acres <b>160</b>	<sup>13</sup> Joint or Infill	<sup>14</sup> Consolidation Code	<sup>15</sup> Order No.
---	-------------------------------	----------------------------------	-------------------------

No allowable will be assigned to this completion until all interests have been consolidated or a non-standard unit has been approved by the division. **Penetration Point:**



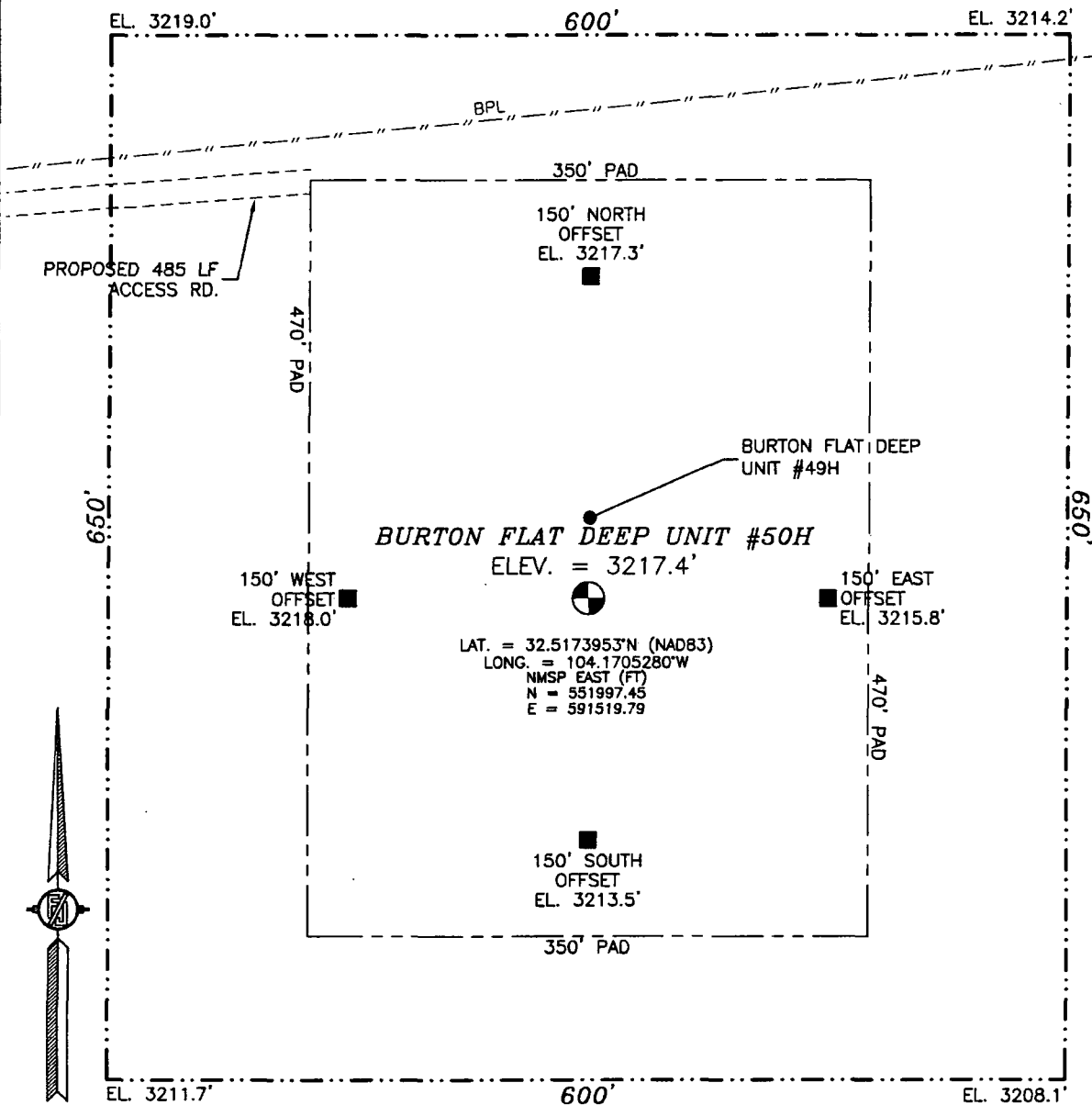
**<sup>17</sup> OPERATOR CERTIFICATION**  
I hereby certify that the information contained herein is true and complete to the best of my knowledge and belief, and that this organization either owns a working interest or unleased mineral interest in the land including the proposed bottom hole location or has a right to drill this well at this location pursuant to a contract with an owner of such a mineral or working interest, or to a voluntary pooling agreement or a compulsory pooling order heretofore entered by the division.

Signature: *[Signature]* Date: **8.15.13**  
Printed Name: **Ryan DeLong**  
E-mail Address:

**<sup>18</sup> SURVEYOR CERTIFICATION**  
I hereby certify that the well location shown on this plat was plotted from field notes of actual surveys made by me or under my supervision, and that the same is true and correct to the best of my belief.

MAY 30, 2013  
Date of Survey: **MAY 30, 2013**  
Signature and Seal of Professional Surveyor: *[Signature]*  
Certificate Number: **PLS 12797**  
SURVEY NO. 1052A

SECTION 3, TOWNSHIP 21 SOUTH, RANGE 27 EAST, N.M.P.M.  
EDDY COUNTY, STATE OF NEW MEXICO



010 50 100 200

SCALE 1" = 100'

**DIRECTIONS TO LOCATION**

FROM THE INTERSECTION OF CR 208 (ILLINOIS CAMP ROAD) AND CR 600 (RAINS ROAD) GO EAST ON CR 600 2.25 MILES TO CALICHE ROAD INTERSECTION PAST RAMBO STA. PAST CATTLE GUARD, GO EAST ON CALICHE ROAD, ROAD BENDS NORTHEAST, GO 1.25 MILES TO FORK IN ROAD. TAKE LEFT ROAD GO 0.65 MILES ON RIGHT THERE IS A TWO-TRACK ROAD JUST SOUTH OF A BURIED PIPE LINE. GO EAST ON TWO-TRACK ROAD 500 FT. SITE IS ABOUT 200 FT ON RIGHT.

**DEVON ENERGY PRODUCTION COMPANY, L.P.**

**BURTON FLAT DEEP UNIT #50H**

**LOCATED 1925 FT. FROM THE NORTH LINE**

**AND 535 FT. FROM THE EAST LINE OF**

**SECTION 3, TOWNSHIP 21 SOUTH,**

**RANGE 27 EAST, N.M.P.M.**

**EDDY COUNTY, STATE OF NEW MEXICO**

AUGUST 2, 2012

SURVEY NO. 1052A

MADRON SURVEYING, INC. 301 SOUTH CANAL CARLSBAD, NEW MEXICO  
(575) 234-3341

This topographic map depicts the Burton Flat region, characterized by a grid of spot elevations and contour lines. The central focus is on two deep units, #50H and #49H, with associated infrastructure like a proposed access road and a cattle water tank. The map also shows the locations of 'Satadar Upl.' and 'Palmita'. A north arrow is positioned on the right side, and various spot elevations (e.g., 3199T, 3204, 3215, 3216, 3213, 3193T, 3195T, 3198T, 3196T, 3187T, 3183T, 3178T, 3196T, 3179T, 3192T, 3184T, 3204T, 3200T, 3194T, 3198T, 3169T, 3193T, 3206T, 3219T, 3225, 3215T) are scattered across the terrain. A dashed line labeled '3-205' runs through the lower portion of the map.

NOT TO SCALE

AUGUST 2, 2012

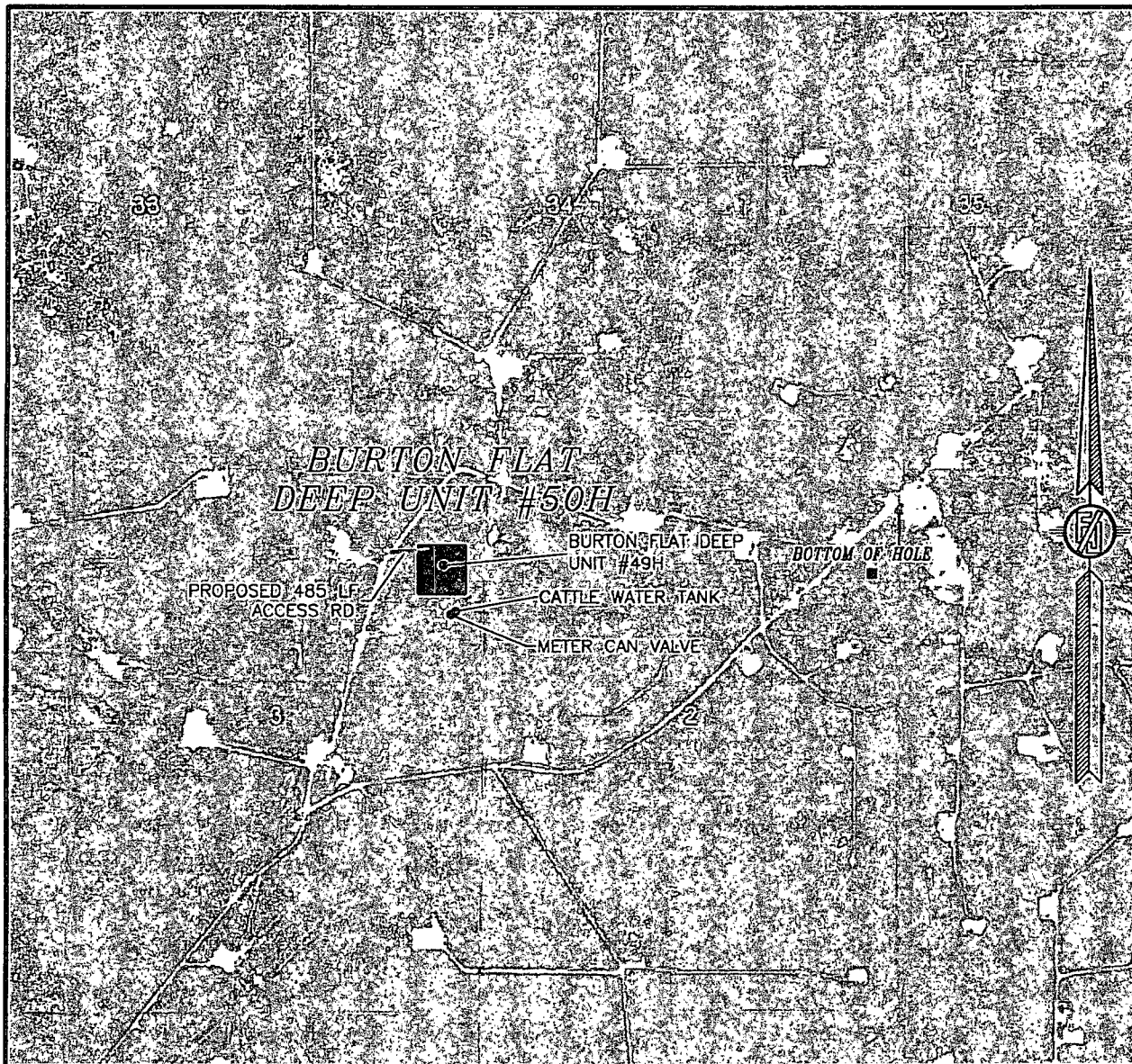
**MADRON SURVEYING, INC.** 301 SOUTH CANAL  
(575) 234-3341 **CARLSBAD, NEW MEXICO**

**BURTON FLAT  
DEEP UNIT #50H**

The map shows the Burton Flat area in southeastern Arizona. Key features include the Pecos River, Indian Flats, and the location of Deep Unit #50H. The map also shows the towns of Lordsburg and Lordsburg, and the Pecos River. The unit is located in the central part of the map, near the intersection of the Pecos River and the Indian Flats. The map includes contour lines, roads, and other geographical features.

**MADRON SURVEYING, INC.** 301 SOUTH CANAL (575) 234-3341 **CARLSBAD, NEW MEXICO**

SECTION 3, TOWNSHIP 21 SOUTH, RANGE 27 EAST, N.M.P.M.  
EDDY COUNTY, STATE OF NEW MEXICO  
**AERIAL PHOTO**



NOT TO SCALE  
AERIAL PHOTO:  
GOOGLE EARTH  
JUNE 2011

DEVON ENERGY PRODUCTION COMPANY, L.P.  
**BURTON FLAT DEEP UNIT #50H**  
LOCATED 1925 FT. FROM THE NORTH LINE  
AND 535 FT. FROM THE EAST LINE OF  
SECTION 3, TOWNSHIP 21 SOUTH,  
RANGE 27 EAST, N.M.P.M.  
EDDY COUNTY, STATE OF NEW MEXICO

AUGUST 2, 2012

SURVEY NO. 1052A

MADRON SURVEYING, INC. 301 SOUTH CANAL (575) 234-3341 CARLSBAD, NEW MEXICO